

## THE CONTOUR OF SPLITTING TREES IS A LÉVY PROCESS

BY AMAURY LAMBERT

*UPMC Université Paris 06*

Splitting trees are those random trees where individuals give birth at a constant rate during a lifetime with general distribution, to i.i.d. copies of themselves. The width process of a splitting tree is then a binary, homogeneous Crump–Mode–Jagers (CMJ) process, and is not Markovian unless the lifetime distribution is exponential (or a Dirac mass at  $\{\infty\}$ ). Here, we allow the birth rate to be infinite, that is, pairs of birth times and life spans of newborns form a Poisson point process along the lifetime of their mother, with possibly infinite intensity measure.

A splitting tree is a random (so-called) chronological tree. Each element of a chronological tree is a (so-called) existence point  $(v, \tau)$  of some individual  $v$  (vertex) in a discrete tree where  $\tau$  is a nonnegative real number called chronological level (time). We introduce a total order on existence points, called linear order, and a mapping  $\varphi$  from the tree into the real line which preserves this order. The inverse of  $\varphi$  is called the exploration process, and the projection of this inverse on chronological levels the contour process.

For splitting trees truncated up to level  $\tau$ , we prove that a thus defined contour process is a Lévy process reflected below  $\tau$  and killed upon hitting 0. This allows one to derive properties of (i) splitting trees: conceptual proof of Le Gall–Le Jan’s theorem in the finite variation case, exceptional points, coalescent point process and age distribution; (ii) CMJ processes: one-dimensional marginals, conditionings, limit theorems and asymptotic numbers of individuals with infinite versus finite descendances.

**1. Introduction.** A splitting tree [10] is a tree formed by individuals with i.i.d. life spans, who give birth at the same constant rate, while they are alive, to copies of themselves. The number of individuals alive at time  $t$  evolves with  $t$  according to non-Markovian dynamics, known as the Crump–Mode–Jagers (CMJ) process. Actually, general CMJ processes feature birth intensities that may vary through the lifetime of an individual as well as clutches of random sizes. Thus the CMJ processes considered here are actually *binary homogeneous CMJ processes*. On the other hand, we consider splitting trees that are more general than those considered in [10], since here individuals may have infinitely many offspring. This

---

Received May 2008; revised February 2009.

*AMS 2000 subject classifications.* Primary 60J80; secondary 37E25, 60G51, 60G55, 60G70, 60J55, 60J75, 60J85, 92D25.

*Key words and phrases.* Real trees, population dynamics, contour process, exploration process, Poisson point process, Crump–Mode–Jagers branching process, Malthusian parameter, Lévy process, scale function, composition of subordinators, Jirina process, coalescent point process, limit theorems, Yaglom distribution, modified geometric distribution.

is done by assuming that for each individual, the birth times and life spans of her offspring form a Poisson point process with intensity  $dt \Lambda(dr)$  where  $\Lambda$  is a Lévy measure on  $(0, \infty]$  called the *lifespan measure* which has  $\int_0^\infty (1 \wedge r) \Lambda(dr) < \infty$ .

Contour processes of splitting trees as defined here are also different from those in [10]. Our contour process  $(X_s, s \geq 0)$  visits once and once only all the instants at which any individual of the tree is alive, that we call *existence points* (the set of existence points of a given individual is merely its lifetime which is in bijection with an interval of the real line). To avoid confusion with the usual denomination of “time” given to the index of stochastic processes (viz. the contour process in the present setting), we will call *level*, or *chronological level*, the real, physical time in which live the individuals of the tree. With the same goal, we will also try and give a Greek letter (such as  $\tau$  or  $\sigma$ ) to these levels, and a Latin letter (such as  $t$  or  $s$ ) to time as the index of stochastic processes. In the case when each individual has finitely many offspring, one can set a rule for the contour as follows: when the contour process is about to visit a birth level, it jumps to the death level of the newborn and then decreases linearly (at speed  $-1$ ) along the lifetime of this individual until it encounters a new birth event. When the contour process ends its visit of an individual, its value is thus the birth level of this individual. It then continues the visit of its mother’s lifetime at the level where (when) it had been interrupted. Hereafter, this process will be called *jumping chronological contour process*, abbreviated as JCCP.

The key result of the present work is that the thus defined contour process  $X$  for splitting trees is a Lévy process. Our inspiration comes from a previous study [24] in the critical case with exponential life spans (the only case when the CMJ process is Markovian, except the Yule case, where life spans are a.s. infinite).

Our result yields a new interpretation of a now famous connection between Lévy processes and branching processes [8, 13, 20] that can be worded as follows: the genealogy of (continuous-state) Markov branching processes can be coded by a scalar Markov process (called genealogy-coding process in [13]) which is a Lévy process in the subcritical and critical cases. This process is usually an abstract object that has to be considered *ex nihilo*, whereas here, it is defined as the contour process of a predefined tree (another interpretation was given in terms of queues in [20]).

This interpretation of a spectrally positive Lévy process as a contour process living in the space of chronological levels of a splitting tree yields an elegant way of considering and inferring properties related to the individuals alive at a fixed level  $\tau$  (number, coalescence levels, ages, ...) in the tree.

In addition, it relates for the first time the genealogies of continuous-state branching processes defined in an apparently unrelated way in [20] and [5], in the finite variation case. In the former work, the starting object is a Lévy process  $X$  with no negative jumps starting from  $\chi$  and killed when it hits 0, and to each time-point  $t$ , is associated a height  $H_t$  (generation, integer number) which is given by

the following functional of the path of  $X$ :

$$(1) \quad H_t := \text{Card} \left\{ 0 \leq s \leq t : X_{s-} < \inf_{s \leq r \leq t} X_r \right\}.$$

The Lebesgue measure of the set of timepoints with height  $n$  is a nonnegative real number  $Z_n$ , and  $(Z_n; n \geq 0)$  is shown to satisfy both the Markov property and the branching property. Here and elsewhere, we will say that a stochastic process  $Z$  with nonnegative values satisfies the *branching property*, if for any two independent copies  $Z'$  and  $Z''$  of  $Z$  started respectively at  $x$  and  $y$ ,  $Z' + Z''$  has the law of  $Z$  started at  $x + y$ .

In the latter work, the starting object is a sequence of i.i.d. subordinators with zero drift,  $S_1, S_2, \dots$  and the population size at generation  $n$  is  $Z'_n := S_n \circ \dots \circ S_1(\chi)$ , with  $Z'_0 = \chi$ . The genealogy of this continuous population is defined as follows: a point  $c$  in generation  $n$  ( $c \in [0, Z'_n]$ ) is the daughter of a point  $b$  in generation  $n - 1$  ( $b \in [0, Z'_{n-1}]$ ), if  $S_n(b-) < c < S_n(b)$ . In particular, all points of generation  $n - 1$  that are no jump times of  $S_n$  have no descendance.

Actually, these two genealogies can be coupled simultaneously starting from a single random object, namely, a splitting tree  $\mathbb{T}$ : the aforementioned Lévy process  $X$  is actually the *JCCP* (jumping chronological contour process, as defined previously) of  $\mathbb{T}$ , and  $Z_n = Z'_n$  is the *sum of all lifespans* of individuals belonging to generation  $n$ . Let us try and explain this briefly. First, at time  $t$ , the JCCP  $X$  visits (the existence point at real time  $X_t$  of) an individual whose generation in the discrete tree is the integer  $H_t$  which can be seen to be exactly as in (1) (see forthcoming Corollary 3.5). Second, the time  $Z_n$  spent by the contour  $X$  at height  $n$ , which is the total time spent by the height process  $H$  at  $n$ , is exactly the Lebesgue measure of the set of existence points in the splitting tree of individuals of generation  $n$  which is exactly the *sum of their lifespans*. Third, one can embed the existence points of individuals of generation  $n$  into the real half-line by arranging lifetimes “end to end” on the interval  $[0, Z_n]$ . Then by construction of the splitting tree,  $Z_{n+1}$  is the sum of all atoms of i.i.d. Poisson measures with intensity  $\Lambda$  defined on lifetime intervals whose lengths sum up to  $Z_n$ . As a consequence, conditional on  $Z_n = z$ , we have obtained that  $Z_{n+1} = S_{n+1}(z)$  where the  $(S_i; i \geq 1)$  are independent subordinators with zero drift and Lévy measure  $\Lambda$  (see also the proof of Theorem 4.1). This explains why  $Z = Z'$ , and that the genealogy defined thanks to these subordinators is exactly that associated with the topology of the splitting tree.

In his seminal article [12], M. Jirina introduced for the first time (multidimensional) Markov processes with continuous-state space satisfying the branching property. He studied the whole class of such processes in discrete time, but only a subclass of them in continuous time (*pure-jump* processes). For this reason, and because the term “Jirina process” for continuous-state branching processes in continuous time has progressively disappeared in the last fifteen years (in favor of “CSBP” or “CB-process”), I propose to call *Jirina processes* those branching

processes in discrete time and continuous state-space like  $(Z_n; n \geq 0)$ .

Last, to clear up the difference between CMJ processes and Markov branching processes such as Jirina or Bienaymé–Galton–Watson (BGW) processes, note that both count the “population size” as time runs, but the former count the number of individuals alive at the *same chronological level*, whereas the latter count those indexed by the successive *generations* of the tree. Replacing time by generations guarantees their Markov property to branching processes, but makes their genealogy harder to infer [14, 23].

In the next section, we set up classical notation on discrete trees and define plane chronological trees, that we endow with a genealogical structure, a distance, a linear order, a Lebesgue measure and a closure. We also recall well-known facts about spectrally positive Lévy processes as well as Jirina processes.

In Section 3, we introduce and study an order-preserving bijection  $\varphi$  between the closure of a chronological tree with finite Lebesgue measure and a compact interval of the real line. The inverse  $\varphi^{-1}$  of this bijection is called the *exploration process*. It is its projection on chronological levels  $p_2 \circ \varphi^{-1}$  which is called *jumping chronological contour process*, or JCCP.

It is only in Section 4 that we consider random chronological trees, called *splitting trees* (as defined earlier). We study the properties of a splitting tree, and prove that the JCCP of its truncation up to level  $\tau$  is a Lévy process reflected below  $\tau$  and killed upon hitting 0.

This last result allows one to derive a number of properties of splitting trees and CMJ processes, which is done in the last section. For splitting trees, an intuitive proof of Le Gall–Le Jan’s theorem is given in the finite variation case (cf. above); the set  $\Gamma$  of levels where the population size is infinite is considered; when  $\Lambda$  is finite,  $\Gamma$  is empty, and when  $\Lambda$  is infinite,  $\Gamma$  has zero Lebesgue measure but is everywhere dense a.s.; the coalescence levels of individuals alive at the same level are shown to be independent and with the same distribution that we specify; the law of ages and residual lifetimes of individuals from the same level is computed. For CMJ processes, the one-dimensional marginal is shown to be *modified geometric*; the supercritical CMJ process conditioned on extinction is characterized; various limit theorems are given, among which the convergence in distribution, conditional on nonextinction, of the numbers of individuals with infinite vs finite descendances to  $(p\xi, (1-p)\xi)$  where  $\xi$  is an exponential random variable with parameter  $p = 1 - \int_0^\infty r e^{-\eta r} \Lambda(dr)$ ,  $\eta$  being the Malthusian parameter.

Actually, the set of points with infinite descendance, or skeleton, has a discrete branching structure (that of a Yule tree). In a forthcoming work [17], we extend the study of splitting trees with finite variation to splitting trees with infinite variation, and prove in particular that the branching structure of the skeleton is again discrete (see also [4]). Note that in the infinite variation case, life spans are not even locally summable, and that in the presence of a Brownian component, we cannot stick to the tree space we deal with here. We also point out that an application of the present work to allelic partitions is available [16].

The reader who might like to avoid technicalities can proceed as follows: in Section 2, just focus on the definitions and the two statements; restrict the reading of Section 3 to Theorem 3.1, Definition 3.2 and Theorem 3.3; skip proofs in the last two sections.

**2. Preliminaries on trees and stochastic processes.**

2.1. *Discrete trees.* Let  $\mathbb{N}$  denote the set of positive integers. Locally finite rooted trees [8, 21] can be coded thanks to the so-called Ulam–Harris–Neveu labelling. Each vertex of the tree is represented by a finite sequence of integers as follows. The root of the tree is  $\emptyset$ , the  $j$ th child of  $u = (u_1, \dots, u_n) \in \mathbb{N}^n$ , is  $uj$ , where  $vw$  stands for the concatenation of the sequences  $v$  and  $w$ , here  $uj = (u_1, \dots, u_n, j)$ . Set  $|u| = n$  the *generation*, or *genealogical height*, of  $u$ . More rigorously, let

$$\mathcal{U} = \bigcup_{n=0}^{\infty} \mathbb{N}^n,$$

where  $\mathbb{N}^0 = \{\emptyset\}$ . A *discrete tree*  $\mathcal{T}$  is a subset of  $\mathcal{U}$  such that:

- (i)  $\emptyset \in \mathcal{T}$ ;
- (ii) if  $v = uj \in \mathcal{T}$ , where  $j \in \mathbb{N}$ , then  $u \in \mathcal{T}$ ;
- (iii) for every  $u \in \mathcal{T}$ , there is a nonnegative integer  $K_u \leq \infty$  (the *offspring number*) such that  $uj \in \mathcal{T}$  if and only if  $j \in \{1, \dots, K_u\}$ .

Note that individuals can have infinitely (but countably) many offspring. We write  $u < v$  if  $u$  is an *ancestor* of  $v$ , that is, there is a sequence  $w$  such that  $v = uw$ . For any  $u = (u_1, \dots, u_n)$ ,  $u|k$  denotes the ancestor  $(u_1, \dots, u_k)$  of  $u$  at generation  $k$ . We denote by  $u \wedge v$  the *most recent common ancestor*, in short, *mrca*, of  $u$  and  $v$ , that is, the sequence  $w$  with highest generation such that  $w < u$  and  $w < v$ .

2.2. *Chronological trees.* Chronological trees are particular instances of  $\mathbb{R}$ -trees. For further reading on  $\mathbb{R}$ -trees, see, for example, [6, 9, 19] and the references therein. The  $\mathbb{R}$ -trees we consider here can roughly be seen as the set of edges of some discrete tree embedded in the plane, where each edge length is a *lifespan*.

Specifically, each individual of the underlying discrete tree possesses a *birth level*  $\alpha$  and a *death level*  $\omega$ , both nonnegative real numbers such that  $\alpha < \omega$ , and (possibly zero) offspring whose birth times are distinct from one another and belong to the interval  $(\alpha, \omega)$ . We think of a *chronological tree* as the set of all so-called *existence points* of individuals (vertices) of the discrete tree. See Figures 1 and 2 for graphical representations of a chronological tree.

DEFINITION. More rigorously, let

$$\mathbb{U} = \mathcal{U} \times [0, +\infty),$$

and set  $\rho := (\emptyset, 0)$ .

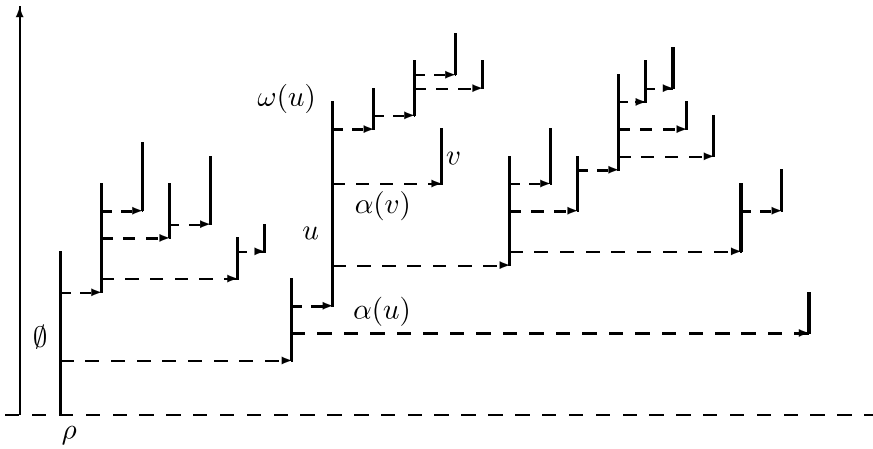


FIG. 1. A representation of a chronological tree  $\mathbb{T}$  with finite discrete part  $\mathcal{T}$ . The horizontal axis has no interpretation, but horizontal arrows indicate filiation; the vertical axis indicates chronological levels. Three elements of  $\mathcal{T}$  are shown: its root  $\emptyset$ , a typical individual  $v$  and her mother  $u$ . Various elements of  $\mathbb{T}$  are shown: its root  $\rho$ , the death level  $\omega(u)$  of  $u$ , as well as the birth levels  $\alpha(u)$  and  $\alpha(v)$ .

We let  $p_1$  and  $p_2$  stand respectively for the canonical projections on  $\mathcal{U}$  and  $[0, +\infty)$ .

The first projection of any subset  $\mathbb{T}$  of  $\mathbb{U}$  will be denoted by  $\mathcal{T}$ ,

$$\mathcal{T} := p_1(\mathbb{T}) = \{u \in \mathbb{T} : \exists \sigma \geq 0, (u, \sigma) \in \mathbb{T}\}.$$

A *chronological tree*  $\mathbb{T}$  is a subset of  $\mathbb{U}$  such that:

- (i)  $\rho \in \mathbb{T}$  (the root);
- (ii)  $\mathcal{T}$  is a discrete tree (as defined in the previous subsection);

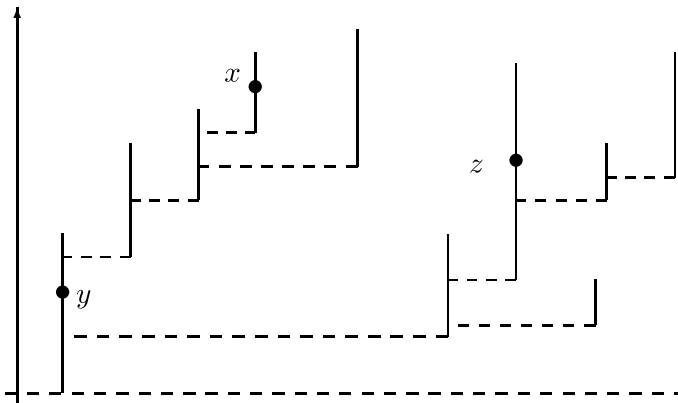


FIG. 2. Three points  $x, y, z$  in a finite chronological tree, satisfying  $y < x$  and  $x \leq y \leq z$ .

(iii) for any  $u \in \mathcal{T}$ , there are  $0 \leq \alpha(u) < \omega(u) \leq \infty$  such that  $(u, \sigma) \in \mathbb{T}$  if and only if  $\sigma \in (\alpha(u), \omega(u)]$ ;

(iv) for any  $u \in \mathcal{T}$  and  $j \in \mathbb{N}$  such that  $uj \in \mathcal{T}$ ,  $\alpha(uj) \in (\alpha(u), \omega(u))$ ;

(v) for any  $u \in \mathcal{T}$  and  $i, j \in \mathbb{N}$  such that  $ui, uj \in \mathcal{T}$ ,

$$i \neq j \Rightarrow \alpha(ui) \neq \alpha(uj).$$

For any  $u \in \mathcal{T}$ ,  $\alpha(u)$  is the birth level of  $u$ ,  $\omega(u)$  its death level and we denote by  $\zeta(u)$  its *lifespan*  $\zeta(u) := \omega(u) - \alpha(u)$ .

Observe that (iii) implies that if  $\mathbb{T}$  is not reduced to  $\rho$ , then  $\emptyset$  has a positive lifespan  $\zeta(\emptyset)$ . We will always assume that  $\alpha(\emptyset) = 0$ .

The (possibly infinite) number of individuals alive at chronological level  $\tau$  is denoted by  $\Xi_\tau$

$$\Xi_\tau = \text{Card}\{v \in \mathcal{T} : \alpha(v) < \tau \leq \omega(v)\} = \text{Card}\{x \in \mathbb{T} : p_2(x) = \tau\} \leq \infty,$$

and  $(\Xi_\tau; \tau \geq 0)$  is usually called the *width process*.

*Genealogical and metric structures.* A chronological tree can naturally be equipped with the following genealogical structure and metric. For any  $x, y \in \mathbb{T}$  such that  $x = (u, \sigma)$  and  $y = (v, \tau)$ , we will say that  $x$  is an *ancestor* of  $y$ , and write  $x < y$ ; as for discrete trees, if  $u < v$  and:

- if  $u = v$ , then  $\sigma \leq \tau$ ;
- if  $u \neq v$ , then  $\sigma \leq \alpha(uj)$  where  $j$  is the unique integer such that  $uj < v$ .

For  $y = (v, \tau)$ , the *segment*  $[\rho, y]$  is the set of ancestors of  $y$ , that is,

$$\begin{aligned} [\rho, y] &:= \{x \in \mathbb{T} : x < y\} \\ &= \{(v, \sigma) : \alpha(v) < \sigma \leq \tau\} \\ &\quad \cup \{(u, \sigma) : \exists k, u = v|k, \alpha(v|k) < \sigma \leq \alpha(v|k + 1)\}. \end{aligned}$$

For any  $x, y \in \mathbb{T}$ , it is not difficult to see that there is a unique existence point  $z \in \mathbb{T}$  such that  $[\rho, x] \cap [\rho, y] = [\rho, z]$ . This point is the point of highest level in  $\mathbb{T}$  such that  $z < x$  and  $z < y$ . In particular, notice that  $p_1(z) = p_1(x) \wedge p_1(y)$  [i.e.,  $p_1(z)$  is the mrca of  $p_1(x)$  and  $p_1(y)$ ]. The level  $p_2(z)$  is called the *coalescence level* of  $x$  and  $y$ , and  $z$  the *coalescence point* (or most recent common ancestor) of  $x$  and  $y$ , denoted as for discrete trees by  $z = x \wedge y$ . The *segment*  $[x, y]$  is then defined as

$$[x, y] := [\rho, x] \cup [\rho, y] \setminus [\rho, x \wedge y],$$

where a reversed bracket means that the corresponding extremity is excluded. A natural distance  $d$  on  $\mathbb{T}$  can readily be defined as

$$d(x, y) := p_2(x) + p_2(y) - 2p_2(x \wedge y).$$

Note that  $p_2$  is also the distance to the root.

*Degree.* The *degree* of a point  $x \in \mathbb{T}$ , that is, the number of connected components of  $\mathbb{T} \setminus \{x\}$ , can be equal to 1, 2 or 3. Apart from the root  $\rho$ , points of degree 1 are called *death points* or *leaves* and are those  $x = (u, \sigma)$  such that  $\sigma = \omega(u)$ . Points of degree 2 are called *simple points*. Points of degree 3 are called *birth points* or *branching points* and are those  $x = (u, \sigma)$  such that  $\sigma = \alpha(uj)$  for some integer  $j \leq K_u$ . For example, if  $x$  is not an ancestor of  $y$  and  $y$  is not an ancestor of  $x$ , then  $x \wedge y$  is a branching point.

*Grafting.* Let  $\mathbb{T}, \mathbb{T}'$  be two chronological trees and  $x = (u, \sigma) \in \mathbb{T}$  a point of degree 2. For any positive integer  $i$ , we denote by  $g(\mathbb{T}', \mathbb{T}, x, i)$  the tree obtained by *grafting*  $\mathbb{T}'$  on  $\mathbb{T}$  at  $x$ , as descending from  $ui$ . More precisely, denote by  $\tilde{\mathbb{T}}$  the tree obtained from  $\mathbb{T}$  by renaming points  $(ukw, \tau)$  as  $(u(k + 1)w, \tau)$ , for all  $k \geq i$  and finite integer words  $w$  such that  $(ukw, \tau) \in \mathbb{T}$ . Then  $g(\mathbb{T}', \mathbb{T}, x, i)$  is given by

$$g(\mathbb{T}', \mathbb{T}, x, i) := \tilde{\mathbb{T}} \cup \{(uiw, \sigma + \tau) : (w, \tau) \in \mathbb{T}'\}.$$

Observe that  $g(\mathbb{T}', \mathbb{T}, x, i)$  indeed is a chronological tree.

*Planar embedding.* The trees we consider can be regarded as *plane* trees satisfying the rule, “edges always grow to the right.” For any  $x \in \mathbb{T}$ , we denote by  $\theta(x)$  the *descendance* of  $x$ , that is, the subset of  $\mathbb{T}$  containing all  $z \in \mathbb{T}$  such that  $x < z$ . The descendance of  $x$  can be split out into its *l*(eft)-descendance  $\theta_l(x)$  and *r*(ight)-descendance  $\theta_r(x)$ . Their definitions are as follows: if  $x$  is not a branching point,  $\theta_l(x) = \theta(x)$  and  $\theta_r(x) = \emptyset$ ; if  $x = (u, \sigma)$  is a branching point, then  $\sigma = \alpha(uj)$  for some integer  $j \leq K_u$  and

$$\theta_l(x) := \bigcup_{\varepsilon > 0} \theta(u, \sigma + \varepsilon) \quad \text{and} \quad \theta_r(x) := \{x\} \cup \bigcup_{\varepsilon > 0} \theta(uj, \sigma + \varepsilon).$$

Actually, since by definition  $x$  belongs to its descendance  $\theta(x)$ , it has to belong to either  $\theta_l(x)$  or  $\theta_r(x)$ . In the case when  $x$  is a branching point, the most convenient convention (which we adopt) is that  $x \in \theta_r(x)$ .

Then for any  $x \in \mathbb{T}$ , the complement in  $\mathbb{T}$  of  $[\rho, x] \cup \theta(x)$  can be partitioned into two forests that we call its *left-hand component*  $L(x)$  and its *right-hand component*  $R(x)$  as follows:

$$L(x) := \bigcup_{y: x \in \theta_r(y)} \theta_l(y) \quad \text{and} \quad R(x) := \bigcup_{y: x \in \theta_l(y)} \theta_r(y).$$

For  $x \in \mathbb{T}$ , the branching points that are ancestor points of  $x$  belong to one of the following sets:

$$G(x) := \{y < x : x \in \theta_r(y)\} \quad \text{or} \quad D(x) := \{y < x : x \notin \theta_r(y) \neq \emptyset\}.$$

Elements of  $G(x)$  (resp.) are called *left (resp. right) branching ancestor points* of  $x$ , in short *lbap* (resp. *rbap*).



*Linear order “≤.”* Let  $x, y \in \mathbb{T}$ . Assume that  $x \wedge y \notin \{x, y\}$ . Then either  $y \in \theta_r(x \wedge y)$  [and then  $x \in \theta_l(x \wedge y)$ ] or  $x \in \theta_r(x \wedge y)$  (and then  $y \in \theta_l(x \wedge y)$ ). As a consequence, either  $x \in L(y)$  and  $y \in R(x)$ , or  $y \in L(x)$  and  $x \in R(y)$ , so that the relation “≤” defined on  $\mathbb{T}$  as follows is a *total order*, or *linear order* on  $\mathbb{T}$  (whereas “<” only defines a partial order);

$$x \leq y \iff [y < x \text{ or } x \in L(y)] \iff [y < x \text{ or } y \in R(x)].$$

Note that the genealogical order and the linear order are opposite on a segment  $[\rho, x]$ . This will have important consequences when our trees are random.

It is also important to notice that if  $\mathbb{T}$  is not reduced to the root, then for any  $x \in \mathbb{T}$ ,

$$(\emptyset, \omega(\emptyset)) \leq x \leq (\emptyset, \alpha(\emptyset)) = \rho.$$

*Lebesgue measure.* The Borel  $\sigma$ -field of a chronological tree  $\mathbb{T}$  can be defined as the  $\sigma$ -field generated by segments. Defining the *Lebesgue measure* of a segment as the distance between its extremities, Caratheodory’s theorem ensures the existence of Lebesgue measure, say  $\lambda$ , on the Borel sets of  $\mathbb{T}$ .

We will, most of the time, call *length* the measure  $\lambda(\mathbb{S})$  of a Borel subset  $\mathbb{S}$  of  $\mathbb{T}$ . Note that the *total length* of the tree  $\lambda(\mathbb{T})$  is the sum of all lifespans,

$$\lambda(\mathbb{T}) = \sum_{u \in \mathcal{T}} \zeta(u) \leq \infty.$$

We define the *truncation* of  $\mathbb{S}$  at level  $\tau$  as the subset of points of  $\mathbb{S}$  whose existence level is lower than  $\tau$ ,

$$C_\tau(\mathbb{S}) := \{x \in \mathbb{S} : p_2(x) \leq \tau\}.$$

We will say that  $\mathbb{S}$ :

- has *locally finite length* if for any finite level  $\tau$ ,  $C_\tau(\mathbb{S})$  has finite length;
- is *finite* if it has a finite discrete part  $p_1(\mathbb{S})$ ;
- is *locally finite* if for any finite level  $\tau$ ,  $C_\tau(\mathbb{S})$  is finite.

Recall that  $\Xi_\tau$  is the number of individuals alive at level  $\tau$ .

PROPOSITION 2.1. *For any  $\tau > 0$ ,*

$$(2) \quad \int_0^\tau \Xi_\sigma d\sigma = \lambda(C_\tau(\mathbb{T})).$$

*If  $\mathbb{T}$  has locally finite length, then:*

- $\Xi_\tau < \infty$  for Lebesgue-a.e.  $\tau$ ;
- $\mathbb{T}$  has finite length iff  $\Xi_\tau = 0$  for all sufficiently large  $\tau$ .

PROOF. First check that

$$\lambda(C_\tau(\mathbb{T})) = \sum_{u \in \mathcal{T}} ((\omega(u) \wedge \tau) - (\alpha(u) \wedge \tau)).$$

Next write  $\Xi_\sigma$  as

$$\Xi_\sigma = \sum_{u \in \mathcal{T}} \mathbf{1}_{\{\alpha(u) < \sigma \leq \omega(u)\}},$$

and use Fubini's theorem to get

$$\int_0^\tau \Xi_\sigma d\sigma = \sum_{u \in \mathcal{T}} \int_0^\tau d\sigma \mathbf{1}_{\{\alpha(u) < \sigma \leq \omega(u)\}} = \sum_{u \in \mathcal{T}} ((\omega(u) \wedge \tau) - (\alpha(u) \wedge \tau))$$

which completes the proof of (2).

The first item of the list is a mere restatement of (2). To see the direct sense of the equivalence stated in the second item, pick any individual  $u$  in the discrete part  $\mathcal{T}$  of  $\mathbb{T}$ . If  $n = |u|$  and  $u_k = u|k$  for  $k = 0, 1, \dots, n$ , then since  $\alpha(u_k) < \omega(u_{k-1})$ , we get by induction,

$$\begin{aligned} \omega(u) &= \zeta(u_n) + \alpha(u_n) < \zeta(u_n) + \omega(u_{n-1}) \\ &= \zeta(u_n) + \zeta(u_{n-1}) + \alpha(u_{n-1}) < \dots < \sum_{k=0}^n \zeta(u_k). \end{aligned}$$

But when  $\mathbb{T}$  has finite length  $\ell$ ,  $\sum_{k=0}^n \zeta(u_k) \leq \sum_{v \in \mathcal{T}} \zeta(v) = \ell$ , so that  $\omega(u) < \ell$ . Then all individuals are dead at time  $\ell$ , so that  $\Xi_\tau = 0$  for any  $\tau \geq \ell$ .

The converse is elementary. Indeed, if there is  $\tau_0$  such that  $\Xi_\tau = 0$  for all  $\tau \geq \tau_0$ , then  $C_\tau(\mathbb{T}) = \mathbb{T}$  for all  $\tau \geq \tau_0$ . So if  $\mathbb{T}$  has locally finite length, it has finite length.  $\square$

Finally, we indicate how to locally close splitting trees that have locally finite length.

*Local closure.* Let  $\partial\mathcal{T}$  denote the (possibly empty) *local boundary* of the discrete tree  $\mathcal{T}$

$$\partial\mathcal{T} := \{\text{infinite sequences } u : u|n \in \mathcal{T} \text{ for all } n \text{ and } (\alpha(u|n))_n \text{ is bounded}\}.$$

We will sometimes write  $\bar{\mathcal{T}} := \mathcal{T} \cup \partial\mathcal{T}$  for the *local closure* of  $\mathcal{T}$ .

Now assume that  $\mathbb{T}$  has locally finite length. Then for any  $u \in \partial\mathcal{T}$ , one has  $\lim_{n \rightarrow \infty} \zeta(u|n) = 0$ , so we can define

$$v(u) := \lim_{n \uparrow \infty} \uparrow \alpha(u|n) = \lim_{n \uparrow \infty} \omega(u|n).$$

This allows to define the *local boundary* of  $\mathbb{T}$  as

$$\partial\mathbb{T} := \{(u, v(u)) : u \in \partial\mathcal{T}\}.$$

We point out that this closure is local in the sense that all points in  $\partial\mathbb{T}$  are at finite distance from the root. Also note that the set  $\partial\mathbb{T}$  is not necessarily countable (examples of uncountable boundaries will be seen later when trees are random). Points in  $\partial\mathbb{T}$  can be thought of as points with zero lifespan and infinite height in the discrete genealogy. They have no descendance and degree 1, so to distinguish them from other leaves, we will call them *limit leaves*. Note that our terminology is a little bit abusive, since the local boundary of  $\mathbb{T}$ , taken in the usual sense (boundary associated to the metric  $d$ ), should also comprise actual leaves, as well as the root. Also note that limit leaves are their own mother in the discrete genealogy.

All other properties of  $\mathbb{T}$  (genealogy, metric, order, ...) trivially extend to its *local closure*  $\overline{\mathbb{T}} := \mathbb{T} \cup \partial\mathbb{T}$ , and details need not be written down. In particular, Lebesgue measure extends to  $\overline{\mathbb{T}}$ : its Borel  $\sigma$ -field is the Borel  $\sigma$ -field of  $\mathbb{T}$  completed with all sets  $A \cup B$ , where  $A$  is a Borel set of  $\mathbb{T}$  and  $B$  is any subset of  $\partial\mathbb{T}$ , with  $\lambda(A \cup B) := \lambda(A)$ . Note that  $\lambda(\partial\mathbb{T}) = 0$ .

2.3. *Spectrally positive Lévy processes.* All results stated in this subsection are well known and can be found in [3].

We denote by  $(Y_t; t \geq 0)$  a real-valued Lévy process (i.e., a process with independent and homogeneous increments, and a.s. càdlàg paths) with *no negative jumps*, and by  $P_x$  its distribution conditional on  $Y_0 = x$ . Its Laplace exponent  $\psi$  is defined by

$$E_0(\exp(-\lambda Y_t)) = \exp(t\psi(\lambda)),$$

and is specified by the Lévy–Khinchin formula,

$$(3) \quad \psi(\lambda) = \alpha\lambda + \beta\lambda^2 + \int_0^\infty (e^{-\lambda r} - 1 + \lambda r \mathbf{1}_{r < 1}) \Lambda(dr), \quad \lambda \geq 0,$$

where  $\alpha \in \mathbb{R}$ ,  $\beta \geq 0$  denotes the *Gaussian coefficient*, and the *Lévy measure*  $\Lambda$  is a  $\sigma$ -finite measure on  $(0, \infty]$  such that  $\int_0^\infty (r^2 \wedge 1) \Lambda(dr) < \infty$ . We will sometimes assume that  $q := \Lambda(\{+\infty\}) = -\psi(0)$  is positive. This amounts to killing the process at rate  $q$ .

The paths of  $Y$  have finite variation a.s. if and only if  $\beta = 0$  and  $\int_0^1 r \Lambda(dr) < \infty$ . Otherwise the paths of  $Y$  have infinite variation a.s.

When  $Y$  has increasing paths a.s., it is called a *subordinator*. In that case,  $\psi(\lambda) < 0$  for any positive  $\lambda$ , and we will prefer to define its Laplace exponent as  $-\psi$ . Since a subordinator has finite variation, its Laplace exponent can be written as

$$-\psi(\lambda) = d\lambda + \int_0^\infty (1 - e^{-\lambda r}) \Lambda(dr), \quad \lambda \geq 0,$$

where  $d \geq 0$  is called the *drift coefficient*.

Next assume that  $Y$  is not a subordinator. Then, since  $\psi$  is convex and ultimately positive,

$$\lim_{\lambda \rightarrow \infty} \psi(\lambda) = +\infty.$$

Denote by  $\eta$  the largest root of  $\psi$ . If  $\psi(0) < 0$  (case when  $\Lambda(\{+\infty\}) \neq 0$ ), then  $\eta > 0$  is the unique root of  $\psi$ . If  $\psi(0) = 0$ , then either  $\psi'(0^+) < 0$  and  $\eta > 0$ , so that  $\psi$  has exactly two roots (0 and  $\eta$ ), or  $\psi'(0^+) \geq 0$ , and  $\psi$  has a unique root  $\eta = 0$ . The inverse of  $\psi$  on  $[\eta, \infty)$  is denoted by  $\phi: [0, \infty) \rightarrow [\eta, \infty)$  and has in particular  $\phi(0) = \eta$ .

We write  $T_A = \inf\{t \geq 0: Y_t \in A\}$  for the first entrance time of  $Y$  in a Borel set  $A$  of  $\mathbb{R}$ , and  $T_y$  for  $T_{\{y\}}$ . It is known that

$$E_0(e^{-qT_{-x}}) = e^{-\phi(q)x}, \quad q \geq 0, x \geq 0.$$

In particular,  $P_0(T_{-x} < \infty) = e^{-\eta x}$ .

Finally, there exists a unique continuous function  $W: [0, +\infty) \rightarrow [0, +\infty)$ , with Laplace transform

$$\int_0^\infty e^{-\lambda x} W(x) dx = \frac{1}{\psi(\lambda)}, \quad \lambda > \eta,$$

such that for any  $0 < x < a$ ,

$$(4) \quad P_x(T_0 < T_{(a, +\infty)}) = W(a - x) / W(a).$$

The function  $W$  is strictly increasing and called the *scale function*.

**2.4. Jirina processes.** We call *Jirina process* a branching process in discrete time and continuous state-space. Specifically, a Jirina process is a time-homogeneous Markov chain  $(Z_n; n \geq 0)$  with values in  $[0, +\infty]$  satisfying the branching property (w.r.t. initial condition). Writing  $Z_n(x)$  for the value at generation  $n$  of the Jirina process starting from  $Z_0 = x \in [0, +\infty)$ , the branching property implies that for each integer  $n$ ,  $(Z_n(x); x \geq 0)$  has i.i.d. nonnegative increments. In particular,  $(Z_1(x); x \geq 0)$  is a *subordinator*, that we prefer to denote as  $S$ . Let  $F$  be the Laplace exponent of  $S$ ,  $d$ , its drift coefficient and  $\Lambda$ , its Lévy measure.

By the (homogeneous) Markov property, there are i.i.d. subordinators  $(S_n)_{n \geq 1}$  distributed as  $S$ , such that, conditional on  $Z_0, Z_1, \dots, Z_n$ ,

$$Z_{n+1} = S_{n+1} \circ Z_n.$$

In particular, by Bochner's subordination, the process  $x \mapsto Z_n(x)$  is a subordinator with Laplace exponent  $F_n$  the  $n$ th iterate of  $F$ , so that

$$\mathbb{E}_x(\exp(-\lambda Z_n)) = \exp(-x F_n(\lambda)), \quad \lambda, x \geq 0.$$

We say that  $Z$  is a Jirina process with *branching mechanism*  $F$ . We will sometimes write  $m := F'(0^+) = d + \int_0^\infty r \Lambda(dr) \leq \infty$ . If  $F(0) = 0$ , the Jirina process is said *subcritical*, *critical* or *supercritical* according to whether  $m < 1$ ,  $= 1$  or  $> 1$ . If  $F(0) > 0$  (i.e.,  $\Lambda(\{+\infty\}) > 0$ ), it is said *supercritical*.

We keep the same symbol  $\eta$  as that used in the previous subsection, for the following quantity:

$$\eta := \sup\{\lambda \geq 0: F(\lambda) = \lambda\} < \infty$$

because we have in mind that the Lévy processes we will consider later on will have the Laplace exponent  $\lambda \mapsto \lambda - F(\lambda)$ . Last, define the event of *extinction*, denoted Ext, as

$$\text{Ext} := \left\{ \lim_{n \rightarrow \infty} Z_n = 0 \right\}.$$

PROPOSITION 2.2. *Let  $Z$  be a Jirina process with branching mechanism  $F$ . Then*

$$\mathbb{P}_x(\text{Ext}) = e^{-\eta x}, \quad x \geq 0.$$

Furthermore,

$$\left\{ \sum_{n \geq 0} Z_n < \infty \right\} = \text{Ext} \quad a.s.$$

Notice that if  $\Lambda$  is infinite or  $d > 0$ , then  $Z_n > 0$  a.s. at each generation  $n$ , even on extinction. On the other hand, if  $S$  is a compound Poisson process, then the Borel–Cantelli lemma ensures that on the event of extinction,  $Z_n = 0$  for all sufficiently large  $n$ .

PROOF OF PROPOSITION 2.2. Recall that  $F$  is concave increasing, so that  $F(x) \geq x$  for  $x \in [0, \eta]$  and  $F(x) \leq x$  for  $x \geq \eta$ . This entails the convergence to  $\eta$  of the sequence  $(F_n(\lambda))_n$  for any initial value  $\lambda > 0$ . As a consequence,

$$\lim_{n \rightarrow \infty} \mathbb{E}_x(\exp(-\lambda Z_n)) = e^{-\eta x}, \quad x, \lambda > 0.$$

This last convergence implies that  $\mathbb{P}_x(\text{Ext}) \leq \exp(-\eta x)$  because

$$e^{-\eta x} \geq \lim_{n \rightarrow \infty} \mathbb{E}_x(\exp(-\lambda Z_n), \text{Ext}) = \mathbb{P}_x(\text{Ext}), \quad x, \lambda > 0.$$

Now for any real number  $\lambda \geq 0$ , define by induction the sequence  $(v_n(\lambda))_n$  as  $v_0(\lambda) = \lambda$  and

$$v_{n+1}(\lambda) = \lambda + F(v_n(\lambda)), \quad n \geq 0.$$

Then an elementary induction argument shows that

$$\mathbb{E}_x \left( \exp \left( -\lambda \sum_{i=0}^n Z_i \right) \right) = \exp(-x v_n(\lambda)), \quad n \geq 0.$$

On the one hand, by definition,  $v_{n+1} = G_\lambda(v_n)$ , where  $G_\lambda : y \mapsto \lambda + F(y)$  is concave increasing and has  $G_\lambda(0) \geq 0$ . This implies that  $G_\lambda$  has at least one fix point, and that its largest fix point, say  $\phi(\lambda)$ , satisfying

$$(5) \quad \phi(\lambda) - F \circ \phi(\lambda) = \lambda, \quad \lambda \geq 0,$$

is also the limit of the sequence  $(v_n(\lambda))$ . On the other hand, the Lebesgue convergence theorem gives the Laplace transform of

$$T := \sum_{i=0}^{\infty} Z_i \in (0, \infty]$$

as

$$(6) \quad \mathbb{E}_x(\exp(-\lambda T)) = \exp(-x\phi(\lambda)).$$

As a consequence,  $T < \infty$  with probability  $\exp(-x\phi(0))$ . But thanks to (5),  $\phi(0)$  is the largest fix point of  $F$ , so  $\phi(0) = \eta$ . Now since  $\{T < \infty\} \subseteq \text{Ext}$ , we get

$$e^{-\eta x} \geq \mathbb{P}_x(\text{Ext}) \geq \mathbb{P}_x(T < \infty) = e^{-\eta x}$$

which implies that  $\{T < \infty\}$  and  $\text{Ext}$  have the same probability and hence coincide a.s.  $\square$

Here the proof is over, but we want to point out that according to (5),  $\phi$  is the inverse of  $\lambda \mapsto \lambda - F(\lambda)$ , which itself is the Laplace exponent of the spectrally positive Lévy process  $t \mapsto Y_t = S_t - t$ . Referring to the last subsection on Lévy processes, equation (6) thus shows that  $T$  has the same law under  $\mathbb{P}_x$  as the first hitting time of 0 by the Lévy process  $Y$  started at  $x$ . One of the goals of this paper is to shed some light on this relationship.

### 3. The exploration process.

3.1. *Definition.* In most examples of  $\mathbb{R}$ -trees, the latter are defined from their contour [1, 2, 18, 20] which is a real function coding the genealogy, whereas here, we do the opposite (see also [7]).

Hereafter,  $\mathbb{T}$  denotes a chronological tree with *finite total length*  $\ell := \lambda(\mathbb{T})$ . The real interval  $[0, \ell]$  is equipped with its Borel  $\sigma$ -field and Lebesgue measure, which we denote by “Leb.” For any  $x \in \overline{\mathbb{T}}$ , set

$$\mathbb{S}(x) := \{y \in \mathbb{T} : y \leq x\}.$$

Since  $\mathbb{S}(x) \setminus \{x\}$  is the union of segments of the form  $]z, y]$  where  $z = y \wedge x$  and  $y$  ranges over the leaves  $\leq x$ , and since the leaves of  $\mathbb{T}$  are in one-to-one correspondence with  $\mathcal{T}$ , which is at most countable, then  $\mathbb{S}(x)$  is a Borel subset of  $\mathbb{T}$ . It is then standard measure theory to prove that the real-valued mapping  $\varphi : \overline{\mathbb{T}} \mapsto [0, \ell]$  defined by

$$\varphi(x) := \lambda(\mathbb{S}(x)), \quad x \in \overline{\mathbb{T}},$$

is measurable and pushes forward the Lebesgue measure on  $\overline{\mathbb{T}}$  to Lebesgue measure on  $[0, \ell]$ . For the sake of conciseness, we will say that  $\varphi$  preserves the (Lebesgue) measure. By construction, it also preserves the order. Note that  $\varphi(\emptyset, \omega(\emptyset)) = 0$  and  $\varphi(\rho) = \ell$ .

Let us show that  $\varphi$  is one-to-one and onto. First, because  $\varphi$  preserves the order,  $\varphi(x) = \varphi(y)$  implies that  $x \leq y$  and  $y \leq x$ , so that  $x = y$ , which proves that  $\varphi$  is one-to-one. Second, let  $t \in [0, \ell]$ , and assume that  $t \in D := [0, \ell] \setminus \varphi(\mathbb{T})$ . We want to show that then  $t$  is the image by  $\varphi$  of a limit leaf. As a first step, notice that because  $\varphi$  preserves the measure,  $D$  has zero Lebesgue measure. As a second step, we define for each  $v \in \mathcal{T}$ ,

$$g(v) := \varphi(v, \omega(v)) \quad \text{and} \quad d(v) := \varphi(u, \alpha(v)),$$

where  $u$  denotes  $v$ 's mother. Then observe that for each  $x \in \mathbb{T}$  such that  $v \prec p_1(x)$ , one has

$$g(v) \leq \varphi(x) < d(v)$$

so that in particular, either  $p_1(x) = \emptyset$  or there is  $v$  with  $|v| = 1$  such that  $\varphi(x) \in [g(v), d(v))$ . Assume that there is no  $v$  with height 1 such that  $t \in [g(v), d(v))$ , and let

$$\begin{aligned} \mathcal{U}_1 &:= \{v \in \mathcal{T} : |v| = 1, g(v) < d(v) < t\} \quad \text{and} \\ \mathcal{U}_2 &:= \{v \in \mathcal{T} : |v| = 1, t < g(v) < d(v)\} \end{aligned}$$

so that  $\mathcal{U}_1$  and  $\mathcal{U}_2$  form a partition of the first generation in  $\mathcal{T}$ . Then we set

$$\sigma_1 := \inf_{v \in \mathcal{U}_1} \alpha(v) \quad \text{and} \quad \sigma_2 := \sup_{v \in \mathcal{U}_2} \alpha(v).$$

For each  $i = 1, 2$ , if  $(\emptyset, \sigma_i)$  is a branching point, then there is an integer  $k$  such that  $\sigma_i = \alpha(k)$  and we put  $x_i := (k, \omega(k))$ ; otherwise we put  $x_i := (\emptyset, \sigma_i)$ . Next observe that  $\sup_{v \in \mathcal{U}_1} d(v) = \varphi(x_1)$  and  $\inf_{v \in \mathcal{U}_2} g(v) = \varphi(x_2)$ , so that

$$\varphi(x_1) \leq t \leq \varphi(x_2).$$

Actually, since by assumption  $t$  is not in  $\varphi(\mathbb{T})$ , we get  $\varphi(x_1) < t < \varphi(x_2)$ , so in particular  $x_1 \neq x_2$  and  $\sigma_1 > \sigma_2$ . Now for any  $x \in \mathbb{T}$  such that  $x_1 < x < x_2$ , and any pair  $(v_1, v_2) \in \mathcal{U}_1 \times \mathcal{U}_2$ , we have

$$g(v_1) < d(v_1) < \varphi(x) < g(v_2) < d(v_2)$$

so that  $p_1(x) = \emptyset$ , and  $x = (\emptyset, \sigma)$  for some  $\sigma \in (\sigma_2, \sigma_1)$ . Then it is easily seen that  $\varphi(x) = \varphi(x_1) + \lambda([x, x_1]) = \varphi(x_1) + \sigma_1 - \sigma$  and that this equality still holds for  $x = x_2$ . Therefore we get a contradiction, since we can always find  $\sigma$  such that  $t = \varphi(\emptyset, \sigma)$ . In conclusion, there must be  $v$  with height 1 such that  $t \in (g(v), d(v))$  [by assumption,  $t \neq g(v)$ ].

Repeating this argument to the subtree descending from  $v$ , and iterating, we get the existence of a unique infinite sequence  $u \in \partial\mathcal{T}$  such that  $t \in (g(u|n), d(u|n))$  for all  $n$ . These intervals are nested, and because  $\mathbb{T}$  has finite length, they have a vanishing diameter and  $[d(u|n) - g(u|n)$  is the length of the subtree descending from  $u|n$ , so we get, as announced,  $t = \varphi(u, v(u))$  for some  $u \in \partial\mathcal{T}$ .

As a conclusion,  $\varphi$  is a bijection from  $\overline{\mathbb{T}}$  onto  $[0, \ell]$  which preserves the order and the measure.

Conversely, let  $\psi$  be any order-preserving and measure-preserving bijection from  $\overline{\mathbb{T}}$  onto  $[0, \ell]$ . First, since  $\psi$  is order-preserving,  $\psi^{-1}([0, \psi(x)]) = \overline{\mathbb{S}(x)}$ . Second, since  $\psi$  is measure-preserving,  $\lambda(\overline{\mathbb{S}(x)}) = \lambda(\overline{\mathbb{S}(x)}) = \text{Leb}([0, \psi(x)]) = \psi(x)$ . This can be recorded in the following statement.

**THEOREM 3.1.** *The mapping  $\varphi$  is the unique order-preserving and measure-preserving bijection from  $\overline{\mathbb{T}}$  onto the real interval  $[0, \ell]$ .*

**DEFINITION 3.2.** The process  $(\varphi^{-1}(t); t \in [0, \ell])$  is called the *exploration process*. Its second projection will be denoted by  $(X_t; t \in [0, \ell])$  and called JCCP, standing for, “jumping chronological contour process.”

**THEOREM 3.3.** *The exploration process is càdlàg (w.r.t. the distance  $d$  on  $\overline{\mathbb{T}}$ ), and for any  $t \in [0, \ell]$ ,  $t$  is a jump time iff  $\varphi^{-1}(t)$  is a leaf  $(v, \omega(v))$  of  $\mathbb{T}$ . In that case,  $\varphi^{-1}(t-) = (u, \alpha(v))$  where  $u$  is  $v$ 's mother in the discrete genealogy.*

*As a consequence, the JCCP  $(X_t; t \in [0, \ell])$  is also càdlàg and the size of each of its jumps is the lifespan of one individual. In addition,*

$$(7) \quad X_t = -t + \sum_{\varphi(v, \omega(v)) \leq t} \zeta(v), \quad 0 \leq t \leq \ell.$$

The JCCP is a càdlàg function taking the values of all levels of all points in  $\overline{\mathbb{T}}$ , once and once only, starting at the death level of the ancestor. In the *finite* case, it follows this rule: when the visit of an individual  $v$  with lifespan  $(\alpha(v), \omega(v))$  begins, the value of the JCCP is  $\omega(v)$ . The JCCP then visits lower chronological levels of  $v$ 's lifespan at the constant speed  $-1$ . If  $v$  has no child, then this visit lasts exactly the lifespan  $\zeta(v)$  of  $v$ ; if  $v$  has at least one child, then the visit is interrupted each time a birth level of one of  $v$ 's daughters, say  $w$ , is encountered (youngest child first since the visit started at the death level). At this point, the JCCP jumps from  $\alpha(w)$  to  $\omega(w)$  and starts the visit of the existence levels of  $w$ . Since the tree has finite length, the visit of  $v$  has to terminate; it does so at the chronological level  $\alpha(v)$  and continues the exploration of the existence levels of  $v$ 's mother, at the level where it had been interrupted. This procedure then goes on recursively until level 0 is encountered [ $0 = \alpha(\emptyset) =$  birth level of the root].

A chronological tree and its associated JCCP are represented on Figure 3.

**REMARK 1.** In the case when the tree has finite discrete part, the JCCP has another interpretation ([20], Figure 1, page 230) in terms of queues. Each jump  $\Delta_t$  is interpreted as a customer of a one-server queue arrived at time  $t$  with a load  $\Delta_t$ . This server treats the customers' loads at constant speed 1 and has priority



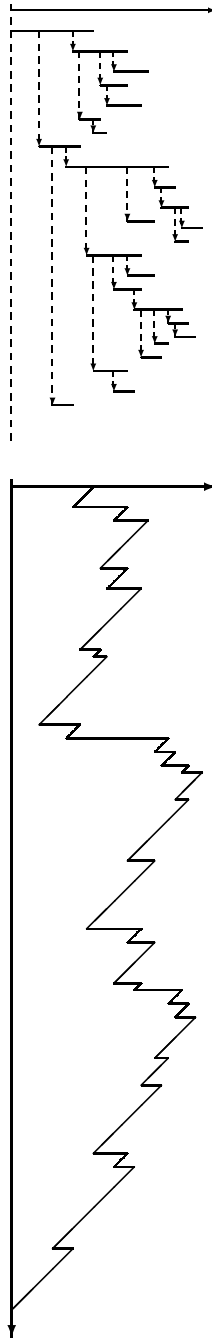


FIG. 3. A chronological tree and the associated jumping chronological contour process (JCCP), with jumps in solid line.

LIFO (last in–first out). The tree structure is derived from the following rule: each customer is the mother of all customers who interrupted her while she was being served. A natural ranking of siblings (customers who interrupt the same service) is the order of their arrivals. The value  $X_t$  of the JCCP is the remaining load in the server at time  $t$ .

Now we make two statements that the proof of Theorem 3.3 will require.

CLAIM 1. For any  $x, y \in \mathbb{T}$  such that  $x \prec y$ , we have

$$d(x, y) \leq \varphi(x) - \varphi(y).$$

CLAIM 2. Let  $x \in \mathbb{T}$  and  $(x_n)_{n \geq 0}$  a sequence of points of  $\mathbb{T}$  converging to  $x$ , such that one of the following conditions holds:

- (a)  $x_0 \prec x_1 \prec x_2 \prec \dots \prec x$ ;
- (b)  $x \prec \dots \prec x_2 \prec x_1 \prec x_0$  and either  $x$  is not a branching point, or it is one but  $x_n \in \theta_r(x)$  for all  $n$ .

Then  $\lim_{n \rightarrow \infty} \varphi(x_n) = \varphi(x)$ .

PROOF OF CLAIM 1. Recall that  $d(x, y) = \lambda([x, y])$  and notice that  $\mathbb{S}(x) \supseteq \mathbb{S}(y) \cup [x, y]$ , so that, taking the measure of each side,

$$\lambda(\mathbb{S}(x)) \geq \lambda(\mathbb{S}(y)) + \lambda([x, y]) - \lambda(\mathbb{S}(y) \cap [x, y]).$$

But  $\mathbb{S}(y) \cap [x, y] = \{y\}$  and  $\lambda(\{y\}) = 0$ , so we get  $d(x, y) = \lambda([x, y]) \leq \lambda(\mathbb{S}(x)) - \lambda(\mathbb{S}(y)) = \varphi(x) - \varphi(y)$ .  $\square$

PROOF OF CLAIM 2. Since the proofs in both cases (a) and (b) are very similar, we only write it in case (a). Set  $t := \varphi(x)$  and  $s_n := \varphi(x_n)$ . The genealogical ordering of the sequence induces the following ranking  $x_0 \geq x_1 \geq x_2 \geq \dots \geq x$  so that  $(s_n)$  is a nonincreasing sequence whose limit  $s := \lim_{n \rightarrow \infty} s_n$  has  $s \geq t$ . Let us suppose that  $s > t$ , and define  $y := \varphi^{-1}((s + t)/2)$ . In particular,  $x \leq y \leq x_n$  and  $y \neq x, x_n$  for all  $n$ . Now let  $z := x \wedge y$ . First, because  $x \leq y$  and  $x \neq y$ , we have  $z \neq x$ . Second, observe that for any  $n$ ,  $z$  and  $x_n$  are on the segment  $[\rho, x]$  so either  $x_n \prec z$  or  $z \prec x_n$ ; but since  $x \leq y \leq x_n$  and  $x_n \prec x$ , we deduce that  $z \leq x_n$  so that  $x_n \prec z$ . In conclusion,  $x_n \prec z \prec x$ , so that  $d(x_n, x) = d(x_n, z) + d(z, x)$ . This brings about the contradiction, since  $d(z, x) > 0$ , whereas  $d(x_n, x)$  vanishes.  $\square$

PROOF OF THEOREM 3.3. Let  $x \in \partial\mathbb{T}$  and  $t = \varphi(x)$ . Recall from the beginning of this section that there is an infinite sequence  $u \in \partial\mathcal{T}$  such that for any  $n, t \in (g(u|n), d(u|n))$ . Also notice that the intervals  $(g(u|n), d(u|n))$  form a sequence of nested intervals decreasing to  $t$ . But for any  $r, s$  in this interval,  $\varphi^{-1}(r)$  and  $\varphi^{-1}(s)$  are in the chronological subtree  $\mathcal{T}_n$  descending from  $u|n$ , so that the

distance between those two points in  $\overline{\mathbb{T}}$  is at most  $\lambda(\mathcal{T}_n) = d(u|n) - g(u|n)$ , which vanishes as  $n \rightarrow \infty$ . This shows that  $\varphi^{-1}$  is continuous at  $t$ , and allows us to discard  $\partial\mathbb{T}$  in the remainder of the proof.

Let us show that  $\varphi^{-1}$  is right-continuous. Let  $t \in [0, \ell)$ , and write  $y = \varphi^{-1}(t)$ . Next let  $(t_n)_{n \geq 0}$  be a decreasing sequence converging to  $t$ , and write  $y_n = \varphi^{-1}(t_n)$ . For any  $z \in ]\rho, y[$ , if  $y_n \wedge y \notin ]z, y[$ , then  $y_n$  is explored after  $z$ , that is,  $\varphi(y_n) \geq \varphi(z) > \varphi(y)$ . Since by assumption  $\varphi(y_n)$  converges to  $\varphi(y)$ , we conclude that  $y_n \wedge y \in ]z, y[$  for all sufficiently large  $n$ . This yields the convergence of  $y_n \wedge y$  to  $y$ , and since  $y_0 \wedge y < y_1 \wedge y < y_2 \wedge y < \dots < y$ , we can apply Claim 2(a) to the sequence  $(y_n \wedge y)_n$  which gives

$$\lim_{n \rightarrow \infty} \varphi(y_n \wedge y) = t.$$

Next, since  $y_n \wedge y < y_n$ , we can apply Claim 1 which gives  $d(y_n \wedge y, y_n) \leq \varphi(y_n \wedge y) - \varphi(y_n)$ . But both terms in the r.h.s. of the foregoing inequality converge to  $t$  so that  $d(y_n \wedge y, y_n)$  vanishes. We conclude with the triangular inequality  $d(y_n, y) \leq d(y_n, y_n \wedge y) + d(y_n \wedge y, y)$  which implies that  $d(y_n, y)$  vanishes. In other words, for any decreasing sequence  $(t_n)$  converging to  $t$ ,  $\varphi^{-1}(t_n)$  converges to  $\varphi^{-1}(t)$ , that is,  $\varphi^{-1}$  is right-continuous.

Next, we prove that  $\varphi^{-1}$  has left-limits that can be characterized as in the theorem. Similar to the previous, let  $t \in (0, \ell]$ , and write  $(v, \tau) = y = \varphi^{-1}(t)$ . This time, let  $(t_n)_{n \geq 0}$  be an increasing sequence converging to  $t$ , and write  $y_n = \varphi^{-1}(t_n)$ .

First, assume that  $y$  is not a leaf. If  $y$  is not a branching point either, then the proof that  $(y_n)$  converges to  $y$  can easily be adapted from that for the right-continuity, but appealing to Claim 2(b) rather than (a). The same argument still applies if  $y$  is a branching point, but to be allowed to appeal to Claim 2(b), one first has to prove that  $y_n \in \theta_r(y)$  for all sufficiently large  $n$ . Let us check that. For any  $n$  and any  $z \in \theta_r(y)$ , if  $y_n \notin \theta_r(y)$  then  $y_n \leq z \leq y$  so that  $\varphi(y_n) < \varphi(z) < \varphi(y)$ . But by assumption,  $(\varphi(y_n))$  converges to  $\varphi(y)$  which proves that  $y_n \in \theta_r(y)$  for all sufficiently large  $n$ .

Second, and more interestingly, assume that  $y$  is a leaf and  $y \in \mathbb{T}$ , so that  $\tau = \omega(v)$ . Write  $u$  for the mother of  $v$ , and set  $z := (u, \alpha(v))$ , and  $z' := (u, \omega(u))$ . Since  $y_n \leq y$ ,  $y_n \notin \theta_r(z)$ . Moreover, applying the same argument as in the end of the last paragraph, we find that for all sufficiently large  $n$ ,  $y_n \in \theta_l(z)$ , or otherwise said,  $y_n \wedge z' \in [z, z'[$ . Actually, this same reasoning can be applied to any  $z'' \in [z, z'[$ , namely  $y_n \wedge z' \in [z, z''[$  for all sufficiently large  $n$ , which proves that  $(y_n \wedge z')$  converges to  $z$ . Next, let  $z_n$  be the midpoint of the segment  $[z, y_n]$ . Since  $y_n \in \theta_l(z)$  for  $n$  large enough, we have  $z < z_n < y_n$ , so that  $\varphi(y_n) \leq \varphi(z_n)$  and because  $y \in R(z_n)$ ,  $\varphi(z_n) \leq t$ . The immediate consequence is that

$$\lim_{n \rightarrow \infty} \varphi(z_n) = t.$$

Now applying Claim 1 to  $z_n < y_n$ , we get  $d(z_n, y_n) \leq \varphi(z_n) - \varphi(y_n)$ , and since both terms in the r.h.s. converge to  $t$ , we deduce that  $d(z_n, y_n)$  vanishes. But by

definition of  $z_n$ ,  $d(z, y_n) = 2d(z_n, y_n)$  which shows that  $(y_n)$  converges to  $z$ . In other words  $\varphi^{-1}(t-) = (u, \alpha(v))$ .

The proof now focuses on the JCCP,  $X = (X_t; t \in [0, \ell])$ . First,  $X = p_2 \circ \varphi^{-1}$  is càdlàg as a mere consequence of the fact that  $\varphi^{-1}$  is càdlàg and  $p_2$  is continuous (whereas  $p_1$  is not, though). Now for any  $t \in (0, \ell)$ ,  $t$  is a jump time of  $X$  only if it is a jump time of  $\varphi^{-1}$ . When it is so, we know that  $\varphi^{-1}(t) = (v, \omega(v))$  for some individual  $v$ , and that  $\varphi^{-1}(t-) = (u, \alpha(v))$  where  $u$  is  $v$ 's mother. This shows that  $X_t = \omega(v)$  and  $X_{t-} = \alpha(v)$ , so that the jump size at time  $t$ ,  $\Delta X_t = X_t - X_{t-}$ , is equal to the lifespan  $\zeta(v)$  of  $v$ .

Now we prove (7). As said in the beginning of the proof, we can assume that  $x = \varphi^{-1}(t) \in \mathbb{T}$ . We will need the following notation: for each point  $y = (v, \tau) \in \mathbb{T}$ , we will set  $\bar{y} := (u, \alpha(v))$  where  $u$  is  $v$ 's mother. Notice that since  $\bar{y} < y$ , we always have  $y \leq \bar{y}$ . Then  $\mathbb{S}(x)$  can be written as the union of  $\mathbb{C}(x)$  and  $\mathbb{U}(x)$  where

$$\mathbb{C}(x) := \{y \in \mathbb{T} : y \leq \bar{y} \leq x\} \quad \text{and} \quad \mathbb{U}(x) := \{y \in \mathbb{T} : y \leq x \leq \bar{y}\}.$$

The only intersection between these subsets is  $x$ , and only if  $x$  is a branching point. We will use twice the following observation: if  $(v, \tau) \in \mathbb{S}(x)$ , then for any  $\sigma \in [\tau, \omega(v)]$ , since  $(v, \tau) < (v, \sigma)$ , we have  $(v, \sigma) \leq (v, \tau) \leq x$ , so that  $(v, \sigma) \in \mathbb{S}(x)$ . The first consequence of this observation is that for any  $y \in \mathbb{C}(x)$ , with  $v = p_1(y)$ ,  $(v, \sigma) \in \mathbb{C}(x)$  for any  $\sigma \in (\alpha(v), \omega(v))$ . We write  $\mathcal{C}(x)$  the set of such vertices of the discrete tree. The second consequence is that for any  $y \in \mathbb{U}(x)$ , with  $y \neq x$  and  $v = p_1(y)$ , there is  $\tau \in (\alpha(v), \omega(v))$  such that

$$(v, \sigma) \in \mathbb{U}(x) \iff \sigma \in (\tau, \omega(v)]$$

which implies that  $(v, \sigma) \leq x \leq (v, \tau)$ . Now thanks to Claim 1, unless  $(v, \tau) = x$ ,  $z = (v, \tau)$  is a branching point,  $(v, \sigma) \in \theta_l(z)$  and  $x \in \theta_r(z)$ . In particular, if  $w$  denotes  $p_1(x)$ , we have  $v < w$  in the discrete tree, so that  $p_1(\mathbb{U}(x))$  is the set of ancestors of  $w$ , which has cardinality  $n + 1$ , where  $n = |w|$ , and, thanks to the last display,

$$\mathbb{U}(x) = (w \times [p_2(x), \omega(w)]) \cup \bigcup_{k=0}^{n-1} ((w|k) \times (\alpha(w|k + 1), \omega(w|k)]).$$

Taking the Lebesgue measure, we get

$$\lambda(\mathbb{U}(x)) = \omega(w) - p_2(x) + \sum_{k=0}^{n-1} (\omega(w|k) - \alpha(w|k + 1)).$$

On the other hand,

$$\lambda(\mathbb{C}(x)) = \sum_{v \in \mathcal{C}(x)} \zeta(v)$$

so that, recalling that the intersection of  $\mathbb{C}(x)$  and  $\mathbb{U}(x)$  has zero Lebesgue measure, and that their union equals  $\mathbb{S}(x)$ , we deduce

$$\lambda(\mathbb{S}(x)) = \left( \sum_{v:(v,\omega(v))\leq x} \zeta(v) \right) - \left( p_2(x) - \alpha(w) + \sum_{k=0}^{n-1} (\alpha(w|k+1) - \alpha(w|k)) \right).$$

Now notice that all terms in the second expression in the r.h.s. cancel out to  $p_2(x)$  which yields

$$p_2(x) = -\varphi(x) + \sum_{v:(v,\omega(v))\leq x} \zeta(v).$$

Writing  $t = \varphi(x)$  yields (7).  $\square$

**3.2. Properties of the JCCP.** Actually, the chronological tree itself can be recovered from its JCCP (modulo labelling of siblings). In the next two statements, we provide some useful applications of this correspondence.

For each  $t \in [0, \ell]$ , set

$$\hat{t} := \sup\{s \leq t : X_s < X_t\} \vee 0, \quad 0 \leq t \leq \ell.$$

**THEOREM 3.4.** *Let  $x = (u, \sigma)$  and  $y = (v, \tau)$  denote any two points in  $\overline{\mathbb{T}}$ , and set  $s = \varphi(x)$  and  $t = \varphi(y)$ . Then the following hold:*

(i) *The first visit to  $v$  is  $\hat{t}$ ,*

$$\varphi(v, \omega(v)) = \hat{t}.$$

*In particular, if  $y \in \partial\mathbb{T}$  then  $\hat{t} = t$ . If  $t$  is a jump time of  $X$ , then  $t = \hat{t}$  as well, and the first visit to the mother  $u$  of  $v$  in  $\mathcal{T}$  is given by*

$$\varphi(u, \omega(u)) = \sup\{s \leq t : X_s < X_{t-}\}.$$

(ii) *Ancestry between  $x$  and  $y$ :*

$$y < x \iff \hat{t} \leq s \leq t.$$

(iii) *Coalescence level between  $x$  and  $y$  (assume e.g.  $s \leq t$ ):*

$$p_2(x \wedge y) = \inf_{s \leq r \leq t} X_r.$$

For any  $t \in [0, \ell]$ , we define the process  $X^{(t)}$  on  $[0, t]$  as

$$X_r^{(t)} := X_{t-} - X_{(t-r)-}, \quad r \in [0, t],$$

with the convention that  $X_{0-} = 0$ . We also set

$$H_t := |p_1 \circ \varphi^{-1}(t)|,$$

the generation, or genealogical height in  $\overline{\mathcal{T}}$ , of the individual  $v = p_1 \circ \varphi^{-1}(t)$  visited at time  $t$  (recall that  $|v|$  denotes the length of the integer word  $v$ ).

The following corollary states that if  $v$  has finite height  $H_t$ , then the record times of  $X^{(t)}$  are exactly those times when each of  $v$ 's ancestors is visited for the first time by the exploration process (which actually holds also when  $v \in \partial\mathcal{T}$ ). It also characterizes the height process  $(H_t; t \geq 0)$  of genealogical heights, or *height process*, as a functional of the path of the JCCP.

**COROLLARY 3.5.** *Let  $y = \varphi^{-1}(t)$ ,  $v = p_1(y)$ , and  $t_k$  the first visit to  $v_k = v|k$  (ancestor of  $v$  belonging to generation  $k$ ), that is,*

$$t_k := \varphi(v_k, \omega(v_k)).$$

(i) *If  $n := |v| < \infty$ , then  $y \notin \partial\mathbb{T}$ , and one can define recursively the record times of  $X^{(t)}$  by  $s_1 = t - \hat{t}$  and*

$$s_{k+1} = \inf\{s \geq s_k : X_s^{(t)} > X_{s_k}^{(t)}\}, \quad k \geq 0.$$

*Then*

$$t_k = t - s_{n-k+1}, \quad 0 \leq k \leq n.$$

(ii) *In the general case, recall  $H_t \leq \infty$  is the genealogical height of  $v \in \overline{\mathcal{T}}$ . Then  $H_t$  is given by*

$$\begin{aligned} H_t &= \text{Card}\left\{0 \leq s \leq t : X_s^{(t)} = \sup_{0 \leq r \leq s} X_r^{(t)}\right\} \\ (8) \quad &= \text{Card}\left\{0 \leq s \leq t : X_{s-} < \inf_{s \leq r \leq t} X_r\right\}. \end{aligned}$$

Quantities defined in the previous two statements are represented in Figure 4.

**PROOF OF THEOREM 3.4.** (i) We first show that when  $y \in \partial\mathbb{T}$ , then  $\hat{t} = t$ . Indeed, recall that  $v$  is an infinite sequence, and that  $t = \lim_{n \uparrow \infty} \uparrow t_n$  where  $t_n = \varphi(v|n, \omega(v|n))$ . Also thanks to Theorem 3.3,  $X_{t_n-} = \alpha(v|n)$ , so  $X_{t_n-}$  increases to  $X_{t-} = X_t$ . This shows that  $\hat{t} = t$ .

As a by-product we also get the displayed equation in the case when  $y \in \partial\mathbb{T}$ , since then there is only one pointwise visit  $t$  of  $v$ , so the first visit is  $t$  and we know that  $t = \hat{t}$ . From now on, we can discard the points of  $\partial\mathbb{T}$ .

Set  $z = (v, \omega(v))$  where  $v = p_1 \circ \varphi^{-1}(t)$  is the individual visited at time  $t$  (and recall  $y = \varphi^{-1}(t)$ ). Observe that  $z \leq y$  because  $y < z$ , so that  $\varphi(z) \leq t$ , and recall from Theorem 3.3 that  $\varphi(z)$  is a jump time, with  $X_{\varphi(z)-} = \alpha(v) < p_2(y) = X_t$ . Now for any  $s \in [\varphi(z), t]$ , set  $x = \varphi^{-1}(s)$  and  $a = x \wedge z$ . Since both  $a$  and  $y$  belong to  $[\rho, z]$ , either  $a < y$  or  $y < a$ . We will suppose that  $a < y$  and find a contradiction. Recall  $z \leq x$ . Either  $x < z$ , so  $a = x$  and  $y \leq x$ , or  $x \in R(z)$ , so

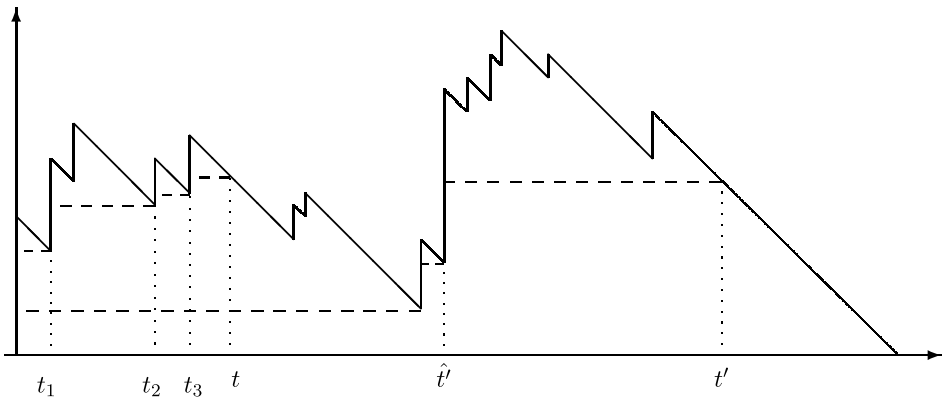


FIG. 4. The JCCP of some finite chronological tree with jumps in solid line. Set  $u = p_1 \circ \varphi^{-1}(t)$  (resp.  $v = p_1 \circ \varphi^{-1}(t')$ ) the individual visited at time  $t$  (resp.  $t'$ ). The first time when  $v$  is visited by the exploration process is  $\hat{t}$ . The first visits to the  $H_t = 3$  ancestors of  $u$  are also shown.

that  $x \in R(y)$ , and similarly  $y \leq x$ . But unless  $y = x$ , this contradicts  $s \leq t$ . As a consequence,  $y < a$ , so that  $y < x$ , and  $X_t = p_2(y) \leq p_2(x) = X_s$ . Summing everything up,  $X_{\varphi(z)-} < X_t$  and for any  $s \in ]\varphi(z), t]$ ,  $X_s \geq X_t$ . From these, we deduce that  $\hat{t} = \varphi(z)$ .

For the second statement, let  $t$  be a jump time, and set  $z = (u, \omega(u))$  where  $u$  is the mother of  $v$  in the discrete tree  $\mathcal{T}$  [it exists since  $\varphi^{-1}(t)$  is a leaf and so is not in  $\partial\mathbb{T}$ ]. Then from Theorem 3.3 we know that  $y = (v, \omega(v))$ , that is,  $t = \varphi(v, \omega(v)) = \hat{t}$ , that  $X_{t-} = \alpha(v)$ , and similarly  $X_{\varphi(z)-} = \alpha(u)$ . Because  $y \in R(z)$ , we get  $\varphi(z) < t$ , and because  $v$  is a daughter of  $u$ , we get  $\alpha(u) < \alpha(v)$ , that is,  $X_{\varphi(z)-} < X_{t-}$ . Now for  $s \in ]\varphi(z), t[$ , set  $x = \varphi^{-1}(s)$  and  $a = x \wedge z$ . We want to show that  $X_s > X_{t-}$  which also reads  $p_2(x) > \alpha(v)$ . Since  $s > \varphi(z)$ , either  $x < z$  or  $x \in R(z)$ . If  $x < z$ , then  $p_2(x) > \alpha(v)$ ; otherwise we would get  $x < y$  and then  $t \leq s$ . If  $x \in R(z)$ , then  $a$  is a rbap of  $z$  with  $p_2(a) \geq \alpha(v)$ ; otherwise we would get  $x \in R(y)$  and then  $s \geq t$ . But since  $a < x$  and  $a \neq x$ ,  $p_2(x) > p_2(a)$ , and we deduce again that  $p_2(x) > \alpha(v)$ . So we get  $X_s > X_{t-}$  for all  $s \in ]\varphi(z), t[$ , and the proof is complete, recalling that  $X_{\varphi(z)-} < X_{t-}$ .

(ii) Again set  $z = (v, \omega(v))$ , with  $v = p_1(y)$  and  $y = \varphi^{-1}(t)$ . Recall that in the first paragraph above, we have shown that for any  $s \in ]\varphi(z), t]$ ,  $y < x (= \varphi^{-1}(s))$ . Now thanks to (i),  $\hat{t} = \varphi(z)$ , so that for any  $s \in ]\hat{t}, t]$ ,  $y < x$ . Conversely, assume that  $y < x$ . First notice that  $x \leq y$ , so that  $s \leq t$ . Second, we want to show that  $z \leq x$ , so that  $\hat{t} \leq s$ . Set  $a = x \wedge z$ . Then either  $x = a$ , so that  $x < z$  (and  $z \leq x$ ), or  $a$  is a branching ancestor point of  $z$ . Now since  $y < x$  and  $y < z$ , we get  $y < a$ , and  $a \in [y, z]$ . Finally, because  $p_1(y) = p_1(z) (= v)$ , there is no lbap in the segment  $[y, z]$ , so that  $a$  is a rbap of  $z$  and  $x \in R(z)$  (then  $z \leq x$  again).

(iii) Set  $I_{s,t} = \inf_{s \leq r \leq t} X_r$ . If  $y < x$ , then  $p_2(x \wedge y) = p_2(y) = X_t$ . Now, by (ii),  $\hat{t} \leq s \leq t$ , and by (i),  $I_{\hat{t},t} = X_t$ , so that  $I_{s,t} = X_t$ . Thus, we have proved (iii)

when  $x \wedge y = y$ . Next set  $z = x \wedge y$  and assume without loss of generality that  $y \in R(x)$ , so  $z$  is a branching point  $(u, \alpha(v)) = \varphi^{-1}(r)$ . Since  $z < y$ ,  $t \leq r$ . Also we have  $z < x$ , so  $\hat{r} \leq s$  which means that  $X_h \geq X_r$  for any  $h \in [s, r] \subset [s, t]$ . In particular,  $I_{s,t} \geq X_r = p_2(x \wedge y)$ . For the converse inequality, notice that  $x \leq a \leq y$  where  $a = (v, \omega(v))$  because  $a \in R(x)$  and  $y \in R(a)$ . Also by definition,  $p_1(x) \wedge p_1(y) = u$  and since  $y \in R(x)$ ,  $v$  is an ancestor individual of  $p_1(y)$  but not of  $p_1(x)$  (otherwise  $p_1(x) \wedge p_1(y) = v$ ). This ensures that  $a \neq x$ , and since  $x \leq a \leq y$ ,  $s < \varphi(a) \leq t$ . But  $a$  is a leaf, so thanks to Theorem 3.3,  $\varphi^{-1}(\varphi(a)^-) = (u, \alpha(v))$ , and  $X_{\varphi(a)^-} = \alpha(v) = p_2(x \wedge y)$ . Because  $s < \varphi(a) \leq t$ , we get  $I_{s,t} \leq p_2(x \wedge y)$ .  $\square$

**PROOF OF COROLLARY 3.5.** We show (i) by descending induction on  $k \in \{0, \dots, n\}$ . Since  $|v| = n$ ,  $v_n = v$ , and by the first statement in Theorem 3.4(i),  $t_n = \varphi(v, \omega(v)) = \hat{t} = t - s_1$ , so the result holds for  $k = n$ . Next let  $k \leq n - 1$ , and assume that  $t_{k+1} = t - s_{n-k}$ . Thanks to the second statement in Theorem 3.4(i), since  $v_k$  is the mother of  $v_{k+1}$ ,

$$t_k = \varphi(v_k, \omega(v_k)) = \sup\{s \leq t_{k+1} : X_s < X_{t_{k+1}-}\}.$$

Elementary calculations yield

$$\sup\{s \leq t_{k+1} : X_s < X_{t_{k+1}-}\} = t - \inf\{s \geq t - t_{k+1} : X_s^{(t)} > X_{t-t_{k+1}}^{(t)}\}.$$

But since  $t - t_{k+1} = s_{n-k}$  by assumption, we deduce that

$$t_k = t - \inf\{s \geq s_{n-k} : X_s^{(t)} > X_{s_{n-k}}^{(t)}\} = t - s_{n-k+1}.$$

As for (ii), if  $v \notin \partial\mathcal{T}$ , just use (i) to see that the number of records of  $X^{(t)}$  is the number of ancestors of  $\varphi^{-1}(t)$  in  $\mathcal{T}$  which is also its height. Then check that the records of the past supremum of  $X^{(t)}$  are those of the future infimum  $J^{(t)}$  of  $X$  on  $[0, t]$ , that is,

$$J_s^{(t)} = \inf_{s \leq r \leq t} X_r, \quad 0 \leq s \leq t.$$

Now if  $v \in \partial\mathcal{T}$ , then on the one hand  $v$  is infinite so by definition  $H_t = \infty$ ; on the other hand, apply (ii) to  $v|n + 1$ : write  $t_n = \varphi(v|n, \alpha(v|n + 1))$  and recall that  $X_s \geq X_{t_n}$  for  $s \in [t_n, t]$  so that the future infimum  $J^{(t)}$  of  $X$  on  $[0, t]$  has at least  $n$  records, and let  $n \rightarrow \infty$ .  $\square$

**4. Splitting trees.** In this section, we consider random chronological trees, called *splitting trees*, and whose width process, in the locally finite case, is a *binary, homogeneous Crump–Mode–Jagers process*.



4.1. *Definition.* A splitting tree is a random chronological tree characterized by a  $\sigma$ -finite measure  $\Lambda$  on  $(0, \infty]$  called the *lifespan measure*, satisfying

$$\int_{(0, \infty]} (r \wedge 1) \Lambda(dr) < \infty.$$

Let  $\mathbb{P}_\chi$  denote the law of a splitting tree starting with one ancestor individual  $\emptyset$  having deterministic lifetime  $(0, \chi]$ , where  $\chi$  is only allowed to equal  $\infty$  when  $\Lambda(\{+\infty\}) > 0$ .

We give a recursive characterization of the family of probability measures  $\mathbb{P} = (\mathbb{P}_\chi)_{\chi \geq 0}$  as follows. Recall from the preliminaries on chronological trees that  $g(\mathbb{T}', \mathbb{T}, x, i)$  is the tree obtained by grafting  $\mathbb{T}'$  on  $\mathbb{T}$  at  $x$ , as descending from  $p_1(x)i$ .

Let  $(\alpha_i, \zeta_i)_{i \geq 1}$  be the atoms of a Poisson measure on  $(0, \chi) \times (0, +\infty]$  with intensity measure  $\text{Leb} \otimes \Lambda$  (where “Leb” stands for Lebesgue measure). Then  $\mathbb{P}$  is the unique family of probability measures on chronological trees  $\mathbb{T}$  satisfying

$$\mathbb{T} = \bigcup_{n \geq 1} g(\mathbb{T}_n, \emptyset \times (0, \chi), (\emptyset, \alpha_n), n),$$

where, conditionally on the Poisson measure, the  $(\mathbb{T}_n)$  are *independent* splitting trees, and for each integer  $n$ , conditional on  $\zeta_n = \zeta$ ,  $\mathbb{T}_n$  has law  $\mathbb{P}_\zeta$ .

In other words, for each individual  $v$  of the tree, conditional on  $\alpha(v)$  and  $\omega(v)$ , the pairs  $(\alpha(vi), \zeta(vi))_{i \geq 1}$  made of the *birth levels* and *lifespans* of  $v$ 's offspring are the atoms of a Poisson measure on  $(\alpha(v), \omega(v)) \times (0, +\infty]$  with intensity measure  $\text{Leb} \otimes \Lambda$ . In addition, conditionally on this Poisson measure, descending subtrees issued from these offspring are independent.

Here, we have to say a word about the order of siblings. First, note that the right-hand side of the last display can also be understood as the sequential grafting of trees on  $\emptyset \times (0, \chi)$  as  $n$  increases. Second, as a referee pointed out, we need to specify how we label the atoms  $(\alpha_i, \zeta_i)_{i \geq 1}$  to characterize  $\mathbb{P}$ . In the case when  $\Lambda(\{+\infty\}) = 0$ , all lifespans are finite a.s., and we can assume that atoms can be ranked in such a way that for any two distinct integers  $i, j$ ,

$$(9) \quad i < j \iff \zeta_i > \zeta_j \quad \text{or} \quad (\zeta_i = \zeta_j \text{ and } \alpha_i < \alpha_j).$$

Note that this order carries over to the case when  $\Lambda(\{+\infty\}) > 0$  but  $\chi < \infty$ . In the case when  $\Lambda(\{+\infty\}) > 0$  and  $\chi = \infty$ , we fix a bijection  $h$  from  $\mathbb{N}$  onto  $\mathbb{N} \times \mathbb{Z}^+$ , and we proceed into three steps. First, all atoms  $(\alpha, \zeta)$  with infinite lifespan (second marginal) are ranked in increasing order of their birth date (first marginal). Then we call  $i$ th cluster of atoms, the subset of those atoms with finite lifespan whose birth date is between the birth dates of the  $(i - 1)$ th and  $i$ th atoms with infinite lifespan (birth date of 0th atom is 0). Second, for each cluster separately, we can (and do) rank the atoms of the cluster in the order defined in (9). Third and last, writing  $h(n) = (h_1(n), h_2(n))$ , we label atoms altogether in such a way that

$$(10) \quad (\alpha_n, \zeta_n) \text{ has rank } h_2(n) \text{ in the } h_1(n)\text{th cluster}$$

where the atom with rank 0 in the  $i$ th cluster is the  $i$ th atom with infinite lifespan itself.

Check that when  $\Lambda$  is *finite*, the splitting tree is locally finite a.s. The term, “*splitting trees*,” is usually restricted to this case [10]. We will say a few more words about it in the next subsection.

*Two branching processes.* Recall that  $\Xi_\tau$  denotes the number of individuals alive at  $\tau$  (width of  $\mathbb{T}$  at level  $\tau$ ),

$$\Xi_\tau = \text{Card}\{v \in \mathcal{T} : \alpha(v) < \tau \leq \omega(v)\} \leq \infty.$$

Under  $\mathbb{P}_\chi$ , the width process  $\Xi$  is a branching process; allowing several ancestor individuals with life spans equal to  $\chi$  and i.i.d. descendances, the branching property holds as a function of the number of ancestors. Unless  $\Lambda$  is exponential or a Dirac mass at  $\{\infty\}$ , this branching process is *not* Markovian.

Next set  $Z_n$  as the sum of all life spans of individuals belonging to generation  $n$ ,

$$Z_n := \sum_{v \in \mathcal{T} : |v|=n} \zeta(v) = \lambda(\{x \in \mathbb{T} : |p_1(x)| = n\}).$$

Under  $\mathbb{P}_\chi$ ,  $Z$  is another branching process, which itself is Markovian, as seen in the next statement.

**THEOREM 4.1.** *Under  $\mathbb{P}_\chi$ ,  $(Z_n; n \geq 0)$  is a Jirina process starting from  $\chi$ , with branching mechanism  $F$  given by*

$$F(\lambda) := \int_0^\infty (1 - e^{-\lambda r}) \Lambda(dr), \quad \lambda \geq 0.$$

*In addition,  $\mathbb{T}$  has locally finite length a.s. under  $\mathbb{P}$ , so  $\Xi_\tau$  is a.s. finite for Lebesgue-a.e.  $\tau$ , and the following events coincide a.s.:*

- (i)  $\mathbb{T}$  has finite length;
- (ii)  $\lim_{n \rightarrow \infty} Z_n = 0$ ;
- (iii)  $\Xi_\tau = 0$  for all sufficiently large  $\tau$ .

**REMARK 2.** The last statement allows to use the same terminology for splitting trees as for Jirina processes. For example, recall from the preliminaries that the event defined a.s. equivalently by (i)–(iii) is called *extinction* and denoted  $\text{Ext}$ . So when  $F(0) = 0$ , we set  $m := F'(0^+) = \int_0^\infty r \Lambda(dr)$ , and we say that  $\mathbb{T}$  is subcritical, critical or supercritical according to whether  $m < 1$ ,  $= 1$  or  $> 1$ . When  $F(0) \neq 0$  (that is,  $\Lambda(\{+\infty\}) \neq 0$ ),  $\mathbb{T}$  is said supercritical.

**PROOF.** By construction,

$$Z_1 = \sum_{s \leq \chi} \Delta_s^1,$$

where  $(\Delta_s^1; s \geq 0)$  is a Poisson point process with intensity  $\text{Leb} \otimes \Lambda$ . Since  $\int_0^1 r \Lambda(dr) < \infty$  by assumption,  $Z_1$  has the value at time  $\chi$  of a subordinator  $S$  with Laplace exponent  $F$ . Now we reason by induction on the generation number  $n$ . By definition, conditionally on the knowledge of generation  $n$ ,

$$Z_{n+1} = \sum_{v:|v|=n} \sum_{s \leq \zeta(v)} \Delta_s^{(v)},$$

where the point processes  $(\Delta_s^{(v)}; s \geq 0)$  are i.i.d. Poisson point processes with common intensity  $\text{Leb} \otimes \Lambda$ . It is then a standard property of Poisson measures that, since  $Z_n = \sum_{v:|v|=n} \zeta(v)$ , we can write

$$Z_{n+1} = \sum_{s \leq Z_n} \Delta_s^n,$$

where  $(\Delta_s^n; s \geq 0)$  is a Poisson point process with intensity  $\text{Leb} \otimes \Lambda$ . Then by induction on  $n$ ,  $Z_n$  has the law of the  $n$ th composition (in Bochner’s sense) of i.i.d. subordinators distributed as  $S$  and evaluated at  $\chi$ . This is precisely saying that  $Z$  is a Jirina process starting from  $\chi$  with branching mechanism  $F$  (see preliminaries).

To show that  $\mathbb{T}$  has locally finite length a.s., we are going to use Proposition 2.1. Set  $\Xi_\tau^{(n)}$  the number of individuals from generation  $n$  living at time  $\tau$ ,

$$\Xi_\tau^{(n)} := \text{Card}\{x \in \mathbb{T} : |p_1(x)| = n, p_2(x) = \tau\}.$$

Observe that  $\Xi_\tau^{(0)} = \mathbf{1}_{\{\chi \geq \tau\}} < \infty$ , and let  $n \geq 0$ . By definition, conditional on  $(\Xi_\sigma^{(n)}; \sigma \leq \tau)$ ,

$$\Xi_\tau^{(n+1)} = \sum_i \mathbf{1}_{\{\alpha_i < \tau \leq \alpha_i + \zeta_i\}},$$

where  $(\alpha_i, \zeta_i)_{i \geq 1}$  are the atoms of a Poisson measure on  $(0, \tau) \times (0, \infty]$  with intensity measure  $\Xi_\sigma^{(n)} d\sigma \otimes \Lambda$ . This entails that the conditional distribution of  $\Xi_\tau^{(n+1)}$  is Poisson with parameter

$$\int_0^\tau d\sigma \Xi_\sigma^{(n)} \int_{[\tau-\sigma, \infty]} \Lambda(dr).$$

With the notations  $\bar{\Lambda}(r) := \Lambda([r, \infty])$  and  $f_n(\tau) := \mathbb{E}_\chi(\Xi_\tau^{(n)})$ , we thus get

$$(11) \quad f_{n+1}(\tau) = \int_0^\tau d\sigma f_n(\sigma) \bar{\Lambda}(\tau - \sigma).$$

Next denote by  $G_n$  the Laplace transform of  $f_n$

$$G_n(\mu) := \int_0^\infty f_n(t) e^{-\mu t} dt, \quad \mu \geq 0,$$

and assume that the series of generic term  $G_n(\mu)$  converges for some  $\mu$ . Then Fubini’s theorem ensures that  $t \mapsto f(t) := \sum_n f_n(t)$  is integrable against

$t \mapsto e^{-\mu t}$ . In particular, for any  $\tau > 0$ ,  $\int_0^\tau f(t) dt \leq e^{\mu\tau} \int_0^\tau f(t)e^{-\mu t} dt \leq e^{\mu\tau} \int_0^\infty f(t)e^{-\mu t} dt < \infty$ . Now applying Fubini’s theorem to  $\Xi_\sigma = \sum_n \Xi_\sigma^{(n)}$ , we get  $\mathbb{E}_\chi(\Xi_\sigma) = f(\sigma)$ . A third and last application of Fubini’s theorem, along with equation (2) in Proposition 2.1, yields

$$\mathbb{E}_\chi \lambda(C_\tau(\mathbb{T})) = \mathbb{E}_\chi \int_0^\tau \Xi_\sigma d\sigma = \int_0^\tau f(\sigma) d\sigma < \infty \quad \text{for any } \tau > 0.$$

In conclusion, it is sufficient that  $\sum_n G_n(\mu) < \infty$  for some  $\mu$  to ensure that  $\mathbb{T}$  has locally finite length a.s. (and, actually, has even integrable local length). Now we prove that it is indeed the case that  $\sum_n G_n(\mu) < \infty$  for some  $\mu$ . Thanks to (11), we have

$$G_{n+1}(\mu) = \int_0^\infty dt e^{-\mu t} \int_0^t ds f_n(s) \bar{\Lambda}(t-s) = G_n(\mu) \int_0^\infty dt e^{-\mu t} \bar{\Lambda}(t).$$

Now a straightforward calculation shows that  $\int_0^\infty dt e^{-\mu t} \bar{\Lambda}(t) = F(\mu)/\mu$ , so that

$$G_n(\mu) = \left( \frac{F(\mu)}{\mu} \right)^n G_0(\mu), \quad \mu > 0,$$

and  $G_0(\mu) = \int_0^\chi e^{-\mu t} dt < \infty$  for any  $\mu \geq 0$ . Now recall from the preliminaries that there is some finite nonnegative real number  $\eta$  such that  $\mu > \eta \Leftrightarrow F(\mu) < \mu$ , which entails the convergence of  $\sum_n G_n(\mu)$  for all  $\mu > \eta$ .

We finish the proof with the a.s. equality of the events defined in (i)–(iii). Because  $\lambda(\mathbb{T}) = \sum_{n \geq 0} Z_n$  and  $Z$  is a Jirina process, we can apply Proposition 2.2 to get the a.s. equality of the events defined in (i) and (ii). The a.s. equality between those defined in (i) and (iii) comes from an appeal to Proposition 2.1, recalling that  $\mathbb{T}$  has a.s. locally finite length.  $\square$

4.2. *The finite case.* The *Crump–Mode–Jagers process* or *CMJ process*, is sometimes called the general branching process (see [26] for a complete overview) because it counts the size of a branching population defined under the very general assumption that “reproduction schemes” of all individuals are i.i.d. Specifically, the reproduction scheme of an individual with given birth date  $\alpha$  is the joint knowledge of:

- her lifespan  $\zeta \in (0, \infty]$ ;
- the successive ages  $(0 <) \sigma_1 < \sigma_2 < \dots (< \zeta)$  at which she gives birth;
- the (integer) size  $\xi_i$  of the clutch she begot at the  $i$ th birth time  $\alpha + \sigma_i$ , for all  $i \geq 1$ .

It is clear that a branching population with i.i.d. reproduction schemes can be constructed recursively starting from a finite number of individuals with given birth dates.

To stick to the present framework, we further assume that:

1. all clutch sizes (the  $\xi_i$ 's) are a.s. equal to 1 (*binary splitting*);
2. conditional on the lifespan  $\zeta$ , the point process  $(\sigma_i)$  is a *Poisson point process* on  $(0, \zeta)$  with intensity  $b$  (*homogeneous reproduction scheme*);
3. the common distribution of lifespans is  $\Lambda(\cdot)/b$ , where  $\Lambda$  is some positive measure on  $(0, \infty]$  with mass  $b$  called the *lifespan measure*.

In other words, each individual gives birth at rate  $b$  during her lifetime  $(\alpha, \omega]$ , to independent copies of herself whose lifespan common distribution is  $\Lambda(\cdot)/b$ . Check that this definition of a splitting tree is exactly the same as that given previously, in the special case when  $\Lambda$  is finite. In that case, the width process  $(\Xi_\tau; \tau \geq 0)$ , is a *homogeneous binary Crump–Mode–Jagers process*.

Trees satisfying the foregoing assumptions could also be called general binary trees with constant birth rate, or homogeneous binary Crump–Mode–Jagers trees, but we will stick to the name of “*splitting trees*.” On the other hand, this terminology is unfortunate because it evokes renewing binary fission (Yule tree).

*A third branching process.* In the finite case, one can define  $\mathcal{Z}_n$  the number of individuals belonging to generation  $n$ ,

$$\mathcal{Z}_n := \text{Card}\{v \in \mathcal{T} : |v| = n\}.$$

From the definition, for any individual  $v$ , the total offspring number of  $v$ , conditional on  $\zeta(v) = z$ , is a Poisson random variable with parameter  $bz$ . Then it is easy to see that  $(\mathcal{Z}_n; n \geq 0)$  is a Bienaymé–Galton–Watson process started at 1, with offspring generating function  $f$ ,

$$f(s) = \int_{(0, \infty)} b^{-1} \Lambda(dz) e^{-bz(1-s)}, \quad s \in [0, 1],$$

and the *per capita* mean number of offspring can easily be computed to be equal to  $m$  [recall  $m = \int_0^\infty r \Lambda(dr)$ ].

*Remark for modeling purpose.* This birth–death scheme can be seen alternatively as a constant birth intensity measure  $b \text{Leb}$  combined with an *age-dependent death intensity measure*  $\mu$  given by

$$\mathbb{P}(\zeta \geq z) = \exp[-\mu((0, z))], \quad z > 0,$$

which forces the equality

$$\exp[-\mu((0, z))] = \bar{\Lambda}(z)/b, \quad z > 0,$$

where  $\bar{\Lambda}(z) = \Lambda([z, \infty))$ , and yields the following equation for  $\mu$ :

$$\mu(dz) = \frac{\Lambda(dz)}{\bar{\Lambda}(z)}, \quad z > 0.$$

It has to be emphasized that in survival analysis (used in systems reliability, medical research, actuarial science, conservation biology, ...), the [density of the] measure  $\mu$  is called the *hazard function* (probability of failing during time interval  $dz$  conditional on survival up to time  $z$ ), whereas the [density of the] measure  $\Lambda/b$  is called the *failure rate*.

If for some reason one has to proceed the other way round (the birth rate  $b$  and some death intensity measure  $\mu$  are given), notice that the lifespan measure  $\Lambda$  is then

$$\Lambda(dz) = b\mu(dz) \exp[-\mu((0, z))], \quad z > 0.$$

The requirement that  $\mu$  has to fulfill for life spans to be a.s. finite is  $\mu((0, \infty)) = \infty$  (corresponding to  $\Lambda(\{+\infty\}) = 0$ ). On the contrary, if  $\mu$  is the null measure on  $(0, \infty)$  (i.e.,  $\Lambda(\{+\infty\}) = b$ ), then the CMJ process is called a *Yule process* (pure-birth process with constant rate  $b$ ).

4.3. *Law of the JCCP of a splitting tree.* From now on, we consider a splitting tree  $\mathbb{T}$  with lifespan measure  $\Lambda$ , and whose ancestor has lifespan  $\zeta(\emptyset) = \chi$ . Recall that its law is denoted  $\mathbb{P}_\chi$ .

From Theorem 4.1, we know that  $\mathbb{T}$  has locally finite length a.s., and finite length iff extinction occurs. In particular,  $\mathbb{T}$  has a JCCP on Ext, denoted by  $(X_t, t \in [0, \lambda(\mathbb{T}))$ , and any of its finite truncations  $C_\tau(\mathbb{T})$  has a JCCP as well, denoted by  $(X_t^{(\tau)}, t \in [0, \lambda(C_\tau(\mathbb{T}))])$ . Although similar with the notation used in Corollary 3.5, this one has a totally different meaning.

Also set

$$\overline{\mathfrak{E}}_\tau := \text{Card}\{x \in \overline{\mathbb{T}} : p_2(x) = \tau\}, \quad \tau \geq 0.$$

Observe that for any  $\tau' \geq \tau$ , the set  $\{x \in \overline{\mathbb{T}} : p_2(x) = \tau\}$  is equal to  $\{x \in \overline{C_{\tau'}(\mathbb{T})} : p_2(x) = \tau\}$ , so that

$$\overline{\mathfrak{E}}_\tau = \text{Card}\{t : X_t^{(\tau')} = \tau\}, \quad 0 \leq \tau \leq \tau',$$

which does not depend on  $\tau'$ .

LEMMA 4.2. *For any fixed  $\chi, \tau, \mathbb{P}_\chi(\overline{\mathfrak{E}}_\tau < \infty) = 1$ .*

An important consequence of this lemma is that for any given  $\chi$  and  $\tau \leq \tau'$ , both  $X$  (on extinction) and  $X^{(\tau')}$  hit  $\tau$  a finite number of times a.s. under  $\mathbb{P}_\chi$ .

PROOF OF LEMMA 4.2. Assume that there is  $\chi, \tau$ , such that  $b_{\chi, \tau} := \mathbb{P}_\chi(\overline{\mathfrak{E}}_\tau = \infty) > 0$ . Then observe that, by the definition of splitting trees,  $\chi \mapsto b_{\chi, \tau}$  is nondecreasing on  $[0, \tau]$  and constant on  $[\tau, +\infty)$ . This ensures that  $b_{\tau, \tau} > 0$ . But using the same kind of argument, as well as translation invariance, we get  $b_{\sigma, \sigma} \geq b_{\tau, \tau}$

for any  $\sigma \geq \tau$  and then  $b_{\chi',\sigma} \geq b_{\tau,\tau}$  for any  $\chi' \geq \sigma \geq \tau$ . As a consequence, we get that for any  $\chi' > \tau$ ,

$$\mathbb{E}_{\chi'} \int_0^\infty \mathbf{1}_{\{\bar{\Xi}_\sigma = \infty\}} d\sigma \geq (\chi' - \tau)b_{\tau,\tau} > 0.$$

Now observe that for any Borel set  $A \subseteq \bar{\mathbb{T}}$ ,  $\text{Leb}(p_2(A)) \leq \lambda(A)$ . Moreover,  $\bar{\Xi}_\sigma = \infty$  only if  $\Xi_\sigma = \infty$  or  $\sigma \in p_2(\partial\mathbb{T})$ . But on the one hand, thanks to Theorem 4.1,  $\{\sigma : \Xi_\sigma = \infty\}$  has a.s. zero Lebesgue measure, and on the other hand,  $\partial\mathbb{T}$ , hence  $p_2(\partial\mathbb{T})$ , also have zero Lebesgue measure. This is in contradiction with the last display.  $\square$

We denote by  $Y$  the spectrally positive Lévy process  $t \mapsto Y_t := -t + \sum_{s \leq t} \Delta_s$  where  $(\Delta_t, t \geq 0)$  is a Poisson point process with intensity measure  $\text{Leb} \otimes \Lambda$ . In particular,  $Y$  is a Lévy process with finite variation, whose Laplace exponent (see preliminaries) will be denoted by  $\psi$ ;

$$\psi(\lambda) := \lambda - F(\lambda) = \lambda - \int_0^\infty (1 - \exp(-\lambda r))\Lambda(dr), \quad \lambda \geq 0.$$

The following statement is the fundamental result of this section. It is a little bit surprising at first sight, in the sense that, even though  $(\varphi^{-1}(t); t \geq 0)$  is not Markovian, its second projection is. Recall that  $T_A$  is the first hitting time of  $A$ .

**THEOREM 4.3.** *The law of  $X^{(\tau)}$  is characterized by (i); conditional on  $\text{Ext}$ , the law of  $X$  is characterized by (ii).*

(i) *Define recursively  $t_0 = 0$ , and  $t_{i+1} = \inf\{t > t_i : X_t^{(\tau)} \in \{0, \tau\}\}$ . Then under  $\mathbb{P}_\chi$ , the killed paths  $e_i := (X_{t_i+t}^{(\tau)}, 0 \leq t < t_{i+1} - t_i)$ ,  $i \geq 0$ , form a sequence of independent excursions, distributed as the Lévy process  $Y$  killed at  $T_0 \wedge T_{(\tau, +\infty)}$ , ending at the first excursion hitting 0 before  $(\tau, +\infty)$ . These excursions all start at  $\tau$ , but the first one, which starts at  $\min(\chi, \tau)$ . In other words,  $X^{(\tau)}$  has the law of  $Y$  reflected below  $\tau$  and killed upon hitting 0.*

(ii) *Under  $\mathbb{P}_\chi(\cdot | \text{Ext})$ ,  $X$  has the law of the Lévy process  $Y$ , started at  $\chi$ , conditioned on, and killed upon, hitting 0.*

**PROOF.** (i) In what follows, we will stick to the notation  $\varphi^{-1}$  for the exploration process of  $C_\tau(\mathbb{T})$  and we define  $\ell := \lambda(C_\tau(\mathbb{T}))$ . Then let  $t \in [0, \ell)$  and  $x = \varphi^{-1}(t) \in C_\tau(\bar{\mathbb{T}}) = \overline{C_\tau(\mathbb{T})}$ . Set  $u = p_1(x) \in \bar{\mathbb{T}}$  and  $n = |u| \leq \infty$ . Set also  $u_k = u|k$ . The segment  $[\rho, x|]$  of ancestor points of  $x$  (except itself) is the union of segments  $u_k \times [\alpha(u_k), \alpha(u_{k+1}))$ , for  $0 \leq k \leq n$ , with the convention  $\alpha(u_{n+1}) = p_2(x) = X_t^{(\tau)}$  when  $n < \infty$ . Next denote by  $\tau_{k,i} \in (\alpha(u_k), \omega(u_k))$  the birth level of  $u_k i$ , and by  $I_k$  the set of integers  $i$  such that  $\tau_{k,i} < \alpha(u_{k+1})$ , that is,  $u_k i$  is a child of  $u_k$  born before  $u_{k+1}$ . Finally, we denote by  $\mathbb{T}_{k,i}$  the subtree that can be seen as grafted at  $\tau_{k,i}$ , that is,

$$\mathbb{T}_{k,i} := \{(v, \sigma) : (u_k i v, \sigma + \tau_{k,i}) \in \theta_r((u_k, \tau_{k,i}))\}, \quad 0 \leq k \leq n, i \in I_k.$$

Now, we can write the subtree  $\mathbb{T}_{\text{post-}t}^{(\tau)}$  of points of  $C_\tau(\mathbb{T})$  still unvisited at time  $t$  (which is the union of  $[\rho, x[$  and  $R(x)$  in  $C_\tau(\mathbb{T})$ ) as

$$\mathbb{T}_{\text{post-}t}^{(\tau)} := C_\tau \left( \bigcup_{0 \leq k \leq n, i \in I_k} g(\mathbb{T}_{k,i}, [\rho, x[, (u_k, \tau_{k,i}), i) \right).$$

We point out that because truncation preserves the order, the post- $t$  exploration process of  $C_\tau(\mathbb{T})$  is exactly the exploration process of  $\mathbb{T}_{\text{post-}t}^{(\tau)}$ .

Now we work under  $\mathbb{P}_\chi$ . We call *heightwise label transposition* any mapping  $\theta: \mathbb{U} \rightarrow \mathbb{U}$ , for which there are integers  $k, i, j$  such that for any  $y \in \mathbb{U}$ , written as  $y = (v, \sigma)$  with  $v = (v_1, \dots, v_l)$ ,

$$\theta(y) = \begin{cases} (v, \sigma), & \text{if } l < k \text{ or } v_k \notin \{i, j\}, \\ (v^*, \sigma), & \text{if } l \geq k \text{ and } v_k = j, \\ (v^{**}, \sigma), & \text{if } l \geq k \text{ and } v_k = i, \end{cases}$$

where  $v^*$  (resp.  $v^{**}$ ) is obtained from  $v$  by setting  $v_k$  equal to  $i$  (resp. to  $j$ ), and leaving other labels unchanged.

For any  $r \geq 0$ , let  $\mathcal{F}_r$  denote the  $\sigma$ -field generated by  $\{F(\varphi^{-1}(s)); s \leq r, F \in \mathcal{H}\}$  where  $\mathcal{H}$  denotes the set of measurable (real) functions on  $\mathbb{U}$  that are invariant under the action of *all* heightwise label transpositions. This filtration is chosen to contain all past events that do not depend upon the choice of sibling labelling. We will now prove that  $X^{(\tau)}$  is Markovian w.r.t. the filtration  $(\mathcal{F}_r)_{r \geq 0}$  and identify its semigroup. This will entail the Markov property of  $X^{(\tau)}$ , because  $(X_s^{(\tau)}; s \leq r)$  is  $\mathcal{F}_r$ -measurable (notice that  $p_2 \in \mathcal{H}$ ).

Now for all  $0 \leq k \leq n$ , let  $\zeta_{k,i}$  be the lifespan of the ancestor of  $\mathbb{T}_{k,i}$ , and let  $\mu_k$  be the random point measure on  $(\alpha(u_k), \alpha(u_{k+1})) \times (0, \infty]$  with atoms  $((\tau_{k,i}, \zeta_{k,i}), i \in I_k)$ .

CLAIM 1. For any  $k = 0, \dots, n$ , conditional on  $\{\alpha(u_k), \alpha(u_{k+1})\}$ ,  $\mu_k$  is a Poisson point measure on  $(\alpha(u_k), \alpha(u_{k+1})) \times (0, \infty]$  with intensity measure  $\text{Leb} \otimes \Lambda$ , independent of  $\mathcal{F}_t$ .

To see this, first recall that by construction the random point measure  $\nu_k$  with atoms  $((\tau_{k,i}, \zeta_{k,i}), i \in \mathbb{N})$  is a Poisson point measure on  $(\alpha(u_k), \omega(u_k)) \times (0, \infty]$  with intensity measure  $\text{Leb} \otimes \Lambda$ . Notice that because  $i \in I_k \Leftrightarrow \tau_{k,i} < \alpha(u_{k+1})$ , the point measure  $\mu_k$  is the restriction of  $\nu_k$  to  $(\alpha(u_k), \alpha(u_{k+1})) \times (0, \infty]$ . Now we are reasoning conditional on  $\{\alpha(u_k), \alpha(u_{k+1})\}$ . First, the point measure  $\mu_k$  (conditionally) is a Poisson point measure on  $(\alpha(u_k), \alpha(u_{k+1})) \times (0, \infty]$  with intensity measure  $\text{Leb} \otimes \Lambda$ . Second, as a consequence of the recursive construction of  $\mathbb{T}$ ,  $\mu_k$  depends on  $\mathcal{F}_t$  only through the knowledge of  $((\tau_{k,i}, \zeta_{k,i}), i \notin I_k)$ . But since  $\mathcal{F}_t$  is independent of sibling labelling,  $\mu_k$  depends on  $\mathcal{F}_t$  only through the knowledge of the atoms of the restriction of  $\nu_k$  to  $[\alpha(u_{k+1}), \omega(u_k)) \times (0, \infty]$ . As a consequence, the point measure  $\mu_k$  is (conditionally) independent of  $\mathcal{F}_t$ .



CLAIM 2. Conditional on  $(\alpha(u_k); 0 \leq k \leq n)$ , the point measures  $(\mu_k; 0 \leq k \leq n)$  are independent.

This last claim is a mere consequence of the recursive construction of  $\mathbb{T}$ , and of the fact that all points  $((u_k, \sigma); 0 \leq k \leq n, \sigma \in (\alpha(u_k), \alpha(u_{k+1})))$  have disjoint descendances.

Now rank the atoms  $((\tau_{k,i}, \zeta_{k,i}); 0 \leq k \leq n, i \in I_k)$  in the order specified by (9) or (10), according to whether  $\Lambda(\{+\infty\})$  is zero or not. We denote by  $(\tau_j, \zeta_j; j \geq 1)$  this relabelled set of atoms, as well as  $\mathbb{T}_j$  the tree corresponding to  $(\tau_j, \zeta_j)$  (read  $j$  as  $j(k, i)$ ). For precisely the same reason as for Claim 2, we have

CLAIM 3. Conditional on  $(\zeta_j; j \geq 1)$ , the trees  $\mathbb{T}_j$  are independent and independent of  $\mathcal{F}_t$ , and for all  $j \geq 1$ , conditional on  $\zeta_j = z$ ,  $\mathbb{T}_j$  has law  $\mathbb{P}_z$ .

Next define

$$\mathbb{T}' := \bigcup_j g(\mathbb{T}_j, \emptyset \times [0, X_t^{(\tau)}[, (\emptyset, \tau_j), j).$$

Thanks to Claims 1 and 2, conditional on  $X_t^{(\tau)} = \sigma$ , and conditional on  $(\alpha(u_k); 0 \leq k \leq n)$ , the point measure  $\mu := \sum_{0 \leq k \leq n} \mu_k$  is the superposition of independent Poisson point measures, all independent of  $\mathcal{F}_t$ , all with the same translation invariant intensity  $\text{Leb} \otimes \Lambda$ , on disjoint sets whose union is equal to  $(0, \sigma) \times (0, \infty]$ , up to the discrete set  $(\alpha(u_k); 0 \leq k \leq n)$ . As a consequence,  $\mu$  is a Poisson point measure with intensity  $\text{Leb} \otimes \Lambda$  on  $(0, \sigma) \times (0, \infty]$ , which does not depend on  $\{\alpha(u_{k+1}); 0 \leq k \leq n\}$ , and is hence independent of  $\mathcal{F}_t$  conditional on  $X_t^{(\tau)} = \sigma$ . Now thanks to Claim 3, conditional on  $X_t^{(\tau)} = \sigma$ ,  $\mathbb{T}'$  is independent of  $\mathcal{F}_t$  and has law  $\mathbb{P}_\sigma$ .

Now observe that any  $x \in \mathbb{T}'_{\text{post-}t}^{(\tau)}$  has  $p_1(x) = u_k i v$  for some  $v$ , and that the mapping from  $\mathbb{T}'_{\text{post-}t}^{(\tau)}$  to  $C_\tau(\mathbb{T}')$  that maps  $u_k i v$  into  $j v$  ( $j = j(k, i)$ ), and leaves  $p_2(x)$  unchanged is a bijection which preserves the linear order and the second projection. As a consequence, the JCCPs of both trees are equal. This shows that conditional on  $X_t^{(\tau)} = \sigma$ ,  $(X_{t+s}^{(\tau)}; s \geq 0)$  is independent of  $\mathcal{F}_t$  and has the distribution of  $(X_s^{(\tau)}; s \geq 0)$  under  $\mathbb{P}_\sigma$ .

Thus, we have shown that  $X^{(\tau)}$  is Markovian, and since  $\ell = \inf\{s \geq 0 : X_s^{(\tau)} = 0\}$ , we get that  $(X^{(\tau)}; 0 \leq s < \ell)$  is a Markov process killed upon hitting 0.

We want to prove that  $X^{(\tau)}$  is a Feller process. Let  $f$  be a continuous, hence bounded, function on  $[0, \tau]$ .

As a first step, because  $X^{(\tau)}$  is càdlàg, the dominated convergence theorem ensures the right-continuity of  $t \mapsto \mathbb{E}_\chi(f(X_t^{(\tau)}))$  which is the first required condition for  $X^{(\tau)}$  to be Feller.

As a second step, let  $\chi' < \chi$ , and recall that  $(\emptyset, \chi')$  is  $\mathbb{P}_\chi$ -a.s. a simple point, that is, a point with degree 2 in the chronological tree, at which the exploration process is continuous. Also notice that  $\varphi((\emptyset, \chi'))$  is the first hitting time  $T_{\chi'}$  of  $\chi'$  by  $X^{(\tau)}$ . As a consequence, the contour process of the (truncation of the) chronological tree issued from  $\emptyset \times [0, \chi']$  [resp.  $\emptyset \times [\chi', \chi]$ ] is  $(X_{T_{\chi'}+t}^{(\tau)}; t \geq 0)$  [resp.  $(X_t^{(\tau)}; 0 \leq t \leq T_{\chi'})$ ], and in addition both contour processes are independent, and the former has the law of  $X^{(\tau)}$  under  $\mathbb{P}_{\chi'}$ . In particular,  $X^{(\tau)}$  satisfies the Markov property at  $T_{\chi'}$  under  $\mathbb{P}_\chi$ . Using these observations, we now show that  $\chi \mapsto \mathbb{E}_\chi(f(X_t^{(\tau)}))$  is continuous on  $[0, \tau]$ , which is the other required condition for  $X^{(\tau)}$  to be Feller. First, since  $T_{\chi'}$  is the length of the subtree issued from  $\emptyset \times [\chi', \chi]$  and truncated at  $\tau$ , it is stochastically dominated by  $\lambda(\mathbb{T})$  under  $\mathbb{P}_{\chi-\chi'}$ . Putting together the first statement of Theorem 4.1 with the arguments developed in the proof of Proposition 2.2, we see that under  $\mathbb{P}_x$ ,  $\lambda(\mathbb{T}) = \sum_n Z_n$  ( $=: T$  in the proof of Proposition 2.2) converges to 0 in probability as  $x \rightarrow 0$ . This ensures that  $\mathbb{P}_\chi(T_{\chi'} > \epsilon)$  vanishes as  $\chi - \chi' \rightarrow 0$ . Second, we have the following equality:

$$\begin{aligned} \mathbb{E}_\chi(f(X_t^{(\tau)})) - \mathbb{E}_{\chi'}(f(X_t^{(\tau)})) &= \int_0^\epsilon \mathbb{E}_\chi(f(X_t^{(\tau)}) - f(X_{t+s}^{(\tau)}), T_{\chi'} \in ds) \\ &\quad + \mathbb{E}_\chi(f(X_t^{(\tau)}) - f(X_{t+T_{\chi'}}^{(\tau)}), T_{\chi'} > \epsilon). \end{aligned}$$

Recalling that  $f$  is bounded, using dominated convergence along with the right-continuity of  $X^{(\tau)}$  for the first term, we get the continuity of  $\chi \mapsto \mathbb{E}_\chi(f(X_t^{(\tau)}))$ . The conclusion (see, e.g., [25]) is that  $X^{(\tau)}$  is a Feller process, and as such, it satisfies the strong Markov property.

Now fix  $\tau' > \tau > 0$  and define  $A^{\tau, \tau'}$  as

$$A_t^{\tau, \tau'} = \int_0^t ds \mathbf{1}_{X_s^{(\tau')} \leq \tau}, \quad t \geq 0,$$

and let  $a^{\tau, \tau'}$  be its right inverse,

$$a_t^{\tau, \tau'} = \inf\{s : A_s^{\tau, \tau'} > t\}, \quad t \geq 0.$$

Then it is clear from our construction that  $X^{(\tau')} \circ a^{\tau, \tau'}$  is the JCCP of  $C_\tau \circ C_{\tau'}(\mathbb{T})$ . But because  $\tau' > \tau$ ,  $C_\tau \circ C_{\tau'} = C_\tau$ , so that

$$X^{(\tau)} = X^{(\tau')} \circ a^{\tau, \tau'}.$$

Then define recursively  $r_0 = 0$ ,  $s_i = \inf\{s \geq r_i : X_s^{(\tau')} \leq \tau\}$  and  $r_{i+1} = \inf\{r \geq s_i : X_r^{(\tau')} > \tau\}$ . Consider the killed paths  $\epsilon_i := (X_{t+s_i}^{(\tau')}; 0 \leq t < r_{i+1} - s_i)$ ,  $i \geq 0$  which are the excursions of  $X^{(\tau')}$  away from  $[\tau, \tau']$ . Because  $X^{(\tau')}$  enters continuously in  $[0, \tau]$  (it has no negative jumps), the initial value of each of these excursions is  $\tau$ , except, if  $\chi < \tau$ ,  $\epsilon_0$  which starts from  $\chi$ . Because  $X^{(\tau')}$  is a killed strong Markov process, the excursions  $(\epsilon_i)_{i \geq 0}$  form a sequence of i.i.d. excursions

(except that  $\epsilon_0$  may have a different starting point), distributed as the process  $X^{(\tau')}$  killed upon exiting  $(0, \tau]$ , ending at the first excursion exiting  $(0, \tau]$  from the bottom.

Then observe that  $A^{\tau, \tau'} \equiv t_i$  on  $[r_i, s_i]$  and that  $a^{\tau, \tau'}(t_i-) = r_i$  and  $a^{\tau, \tau'}(t_i) = s_i$  where  $t_0 = 0$  and  $t_i$  is the  $i$ th hitting time of  $\tau$  by  $X^{(\tau)}$  defined in the theorem so that  $\epsilon_i$  is also the  $i$ th excursion  $e_i$  of  $X^{(\tau)}$  away from  $\tau$ , for all  $i$ .

As a consequence, it only remains to prove that the strong Markov process  $X^{(\tau')}$  and the Lévy process  $Y$  with Laplace exponent  $\psi$ , both started at  $\chi \leq \tau$  and killed upon exiting  $(0, \tau]$ , have the same law. From what precedes, we know that this law does not depend on  $\tau'$ . Recall from Theorem 3.3 that the process  $X^{(\tau')}$  started at  $\chi$  and killed upon exiting  $(0, \tau]$  can be written as

$$X_t^{(\tau')} = \chi - t + \sum_{i: 0 < t_i \leq t} \zeta(u_i), \quad 0 \leq t < T_0 \wedge T_{(\tau, \infty)},$$

where  $(x_i = (u_i, \omega(u_i)); i \geq 0)$  range over the leaves of  $C_{\tau'}(\mathbb{T})$ , and  $t_i = \varphi(x_i)$ . By a standard truncation argument, we can assume that the lifespan measure  $\Lambda$  has compact support and choose  $\tau'$  sufficiently large for this support to be contained in  $[0, \tau' - \tau]$ . This guarantees that on  $[0, T_0 \wedge T_{(\tau, \infty)}]$ , the jumps of  $X^{(\tau')}$  are exactly the life spans of individuals (as if no branches were cut down). Then the jumping rate of  $X^{(\tau')}$  from  $x$  to  $(x + z) dz$  on  $[0, T_0 \wedge T_{(\tau, \infty)}]$  does not depend on  $\tau$  (recall it does not depend on  $\tau'$  either), so we denote it by  $M(x, dz)$ . Next recall from the proof of the Feller property above, that the law of  $X^{(\tau')}$  started at  $\chi$  and killed upon exiting  $(0, \tau]$  is the same as that of  $X^{(\tau')}$  started at  $\chi + h$  and killed upon exiting  $(h, \tau + h]$ . But the jumping rate at  $0^+$  of the former is  $M(\chi, dz)$  whereas that of the latter is  $M(\chi + h, dz)$  which proves that  $M(x, dz)$  does not depend on  $x$  either. As a consequence, the law of  $X^{(\tau')}$  killed upon exiting  $(0, \tau]$  is that of a Lévy process (killed upon exiting  $(0, \tau]$ ) with no negative jumps and finite variation, drift  $-1$  and Lévy measure, say  $\Pi$ . It only remains to show that  $\Pi = \Lambda$ . Thanks to Theorem 3.4 and Corollary 3.5, the dates at which the ancestor gives birth are those levels  $\sigma \in (0, \chi)$  such that  $D(\sigma-) < D(\sigma)$  where

$$D(\sigma) := \inf\{t \geq 0 : X_t^{(\tau')} = \chi - \sigma\}, \quad \sigma \in (0, \chi),$$

and furthermore, the lifespan of the individual born at level  $\sigma$  is the jump size  $\Delta_\sigma$  of  $X^{(\tau')}$  at  $D(\sigma-)$ . Then we deduce that  $(\Delta_\sigma; \sigma \in (0, \chi))$  is a Poisson point process with intensity measure  $\Lambda$ . But since  $X^{(\tau')}$  is a Lévy process with no negative jumps, finite variation, drift coefficient  $-1$  and Lévy measure  $\Pi$ , it is known that  $(\Delta_\sigma; \sigma \in (0, \chi))$  is a Poisson point process with intensity measure  $\Pi$ . This shows that  $\Pi = \Lambda$ .

(ii) Under  $\mathbb{P}_\chi(\cdot, \text{Ext})$ , thanks to Theorem 4.1, we see that (i) holds for  $\tau = \infty$ , and we get that under  $\mathbb{P}_\chi(\cdot, \text{Ext})$ ,  $X$  is a Lévy process with Laplace exponent  $\psi$ , started at  $\chi$ , hitting 0, and killed upon hitting 0. Now by Proposition 2.2 and Theorem 4.1,  $\mathbb{P}_\chi(\text{Ext}) = \exp(-\eta\chi)$ , and from the preliminaries on Lévy processes,

we know that this is also the probability that the Lévy process  $Y$  with Laplace exponent  $\lambda \mapsto \lambda - F(\lambda)$  hits 0. As a consequence, the statement on *conditioned* distributions also holds. □

**5. New properties of splitting trees and the Crump–Mode–Jagers process.**

In this section, we will constantly use the notation  $F(\lambda) = \int_0^\infty (1 - e^{-\lambda r})\Lambda(dr)$ , and  $\psi(\lambda) = \lambda - F(\lambda)$ . The scale function  $W$  is the positive function with Laplace transform  $1/\psi$  (see preliminaries).

Also recall that  $\mathbb{P}_\chi$  denotes the law of the splitting tree with  $\zeta(\emptyset) = \chi$ , whereas  $P_\chi$  is the law of the spectrally positive Lévy process  $Y$  with Laplace exponent  $\psi$  started at  $\chi$ . Note that  $Y$  has bounded variation.

5.1. *Properties of splitting trees.*

5.1.1. *A new proof of Le Gall and Le Jan’s theorem.*

**THEOREM 5.1.** *Let  $Y$  be a spectrally positive Lévy process with Laplace exponent  $\psi$  such that  $\psi(0) = 0$  and  $\psi'(0+) \geq 0$ , started at  $\chi$  and killed when it hits 0. Then define*

$$H_t = \text{Card}\left\{0 \leq s \leq t : Y_{s-} < \inf_{s \leq r \leq t} Y_r\right\}, \quad t < T_0,$$

and  $L$  the local time process of  $H$ ,

$$L_n := \int_0^{T_0} dt \mathbf{1}_{\{H_t=n\}}, \quad n \geq 0.$$

Then  $(L_n; n \geq 0)$  is a Jirina process with branching mechanism  $F$  starting from  $L_0 = \chi$ , that is, for any integer  $n \geq 1$ ,

$$L_n = S_n \circ \dots \circ S_1(\chi),$$

where the  $S_i$  are i.i.d. subordinators with Laplace exponent  $F$ .

**REMARK 3.** In [20], the Lévy process  $Y$  is the continuous analogue of a downwards-skip-free random walk that can be extracted from a Bienaymé–Galton–Watson tree as follows. The jumps of this random walk are the offspring sizes, shifted by  $-1$ , of successive individuals of the tree taken in the depth-first search order. The height functional  $H$  is chosen by analogy with the BGW case where it allows to recover the generation number of individuals visited in the depth-first search order. Then it is shown ([20], Proposition 3.2) that the time  $L_n$  spent at level  $n$  indeed is Markovian (in  $n$ ), satisfies the branching property (in its initial value), and its probability transitions are displayed.

The foregoing statement is a slight refinement of Proposition 3.2 in [20] because it provides the law of  $(L_n; n \geq 0)$  as the composition of subordinators which in

passing sheds light on the genealogy defined in [5] by flows of subordinators. This relationship between both types of genealogies can be seen directly thanks to splitting trees (see proof below, and the [Introduction](#)).

**PROOF OF THEOREM 5.1.** Thanks to the tools set up in the previous sections, the proof of this theorem is straightforward. First, since  $\psi(0) = 0$ , thanks to Theorem 4.1 and Proposition 2.2, the splitting tree  $\mathbb{T}$  with lifespan measure  $\Lambda$  and law  $\mathbb{P}_\chi$  is subcritical ( $\psi'(0+) > 0$ ) or critical ( $\psi'(0+) = 0$ ), and so has finite length  $\ell$  a.s. Now Theorem 4.3(ii) allows to state that  $Y$  is the JCCP of  $\mathbb{T}$ , so in particular,  $T_0 = \ell$ .

Next, thanks to Corollary 3.5, we know that  $H_t$  is also the genealogical height of  $\varphi^{-1}(t)$  in  $\mathcal{T}$ , so that

$$L_n = \int_0^\ell dt \mathbf{1}_{\{|p_1 \circ \varphi^{-1}(t)|=n\}} = \lambda(\{x \in \mathbb{T} : |p_1(x)| = n\}).$$

This proves that  $L_n = \sum_{v:|v|=n} \zeta(v) = Z_n$ , so the proof ends with an appeal to Theorem 4.1.  $\square$

5.1.2. *Exceptional points.* Recall that for any chronological tree  $\mathbb{T}$ ,

$$\Xi_\tau = \text{Card}\{x \in \mathbb{T} : p_2(x) = \tau\} \leq \text{Card}\{x \in \overline{\mathbb{T}} : p_2(x) = \tau\} = \overline{\Xi}_\tau.$$

Recall from Lemma 4.2 that for any fixed  $\tau$ ,  $\Xi_\tau = \overline{\Xi}_\tau < \infty$  a.s.

**LEMMA 5.2.**  $\mathbb{P}(\forall x = (u, \tau) \in \partial\mathbb{T}, \Xi_\tau = \infty) = 1$ .

An important consequence of this lemma is that a.s. under  $\mathbb{P}$  for all  $\tau' \geq \tau \geq 0$ ,

$$\Xi_\tau = \overline{\Xi}_\tau = \text{Card}\{t : X_t^{(\tau')} = \tau\}.$$

In other words  $(\Xi_\tau; 0 \leq \tau \leq \tau')$  is a.s. equal to the occupation process of  $X^{(\tau')}$ . Indeed, if we had  $\Xi_\tau < \overline{\Xi}_\tau$  then there would be  $x \in \partial\mathbb{T}$  such that  $p_2(x) = \tau$ , but in that case,  $\Xi_\tau = \infty$  which would imply  $\overline{\Xi}_\tau = \infty = \Xi_\tau$ .

**PROOF OF LEMMA 5.2.** Assume that there is  $x = (u, \tau) \in \partial\mathbb{T}$  such that  $\Xi_\tau < \infty$ . Since  $\mathbb{T}$  has a.s. locally finite length, and we are interested in a local property (property of truncations), we can also assume, without loss of generality, that it has finite length. Recall that  $\tau = \lim_n \omega(u|n)$  and that  $\alpha(u|n) < \tau$  for all  $n$ . Since  $\Xi_\tau < \infty$ , we must have  $\omega(u|n) < \tau$  for all but a finite number of  $ns$ . In particular, there are infinitely many times  $t_n := \varphi(u|n, \omega(u|n))$  increasing to  $t := \varphi(x)$  such that  $X_{t_n} < \tau = X_t$  (and  $\lim_n X_{t_n} = \tau$ ) where  $X$  is the JCCP of  $\mathbb{T}$ . Setting  $U := \sup\{s < t : X_s \geq X_t\}$ , we must have  $U < t$  because otherwise, since  $X$  has no negative jumps, it would hit  $\tau$  infinitely often before time  $t$ . The bottom line is that, with positive probability,  $X$  has infinitely many ladder times (record

times of the past supremum) on a finite interval. But since  $X$  is a spectrally positive Lévy process with finite variation, this happens with zero probability [3], Chapter VII.  $\square$

Actually, we have not even proved yet that  $\partial\mathbb{T}$  was nonempty with positive probability under  $\mathbb{P}$ . Of course, when  $\Lambda$  is finite,  $\mathbb{P}(\partial\mathbb{T} \neq \emptyset) = 0$ . The following statement treats the infinite case. Fix  $\tau > 0$ , and set

$$\Gamma := \{\sigma \in [0, \tau] : \Xi_\sigma = \infty\} \quad \text{and} \quad G := \{s \in [0, t] : H_s = \infty\},$$

where  $H_s$  is the height of  $\varphi^{-1}(s)$ ,  $\varphi^{-1}$  being the exploration process of  $C_\tau(\mathbb{T})$ , and  $t = \lambda(C_\tau(\mathbb{T}))$ .

Thanks to the paragraph preceding Theorem 3.1, we know that  $G$  has zero Lebesgue measure. Thanks to Theorem 4.1, we know that  $\Gamma$  has a.s. zero Lebesgue measure.

**THEOREM 5.3.** *If  $\Lambda$  is infinite, conditional on  $\Xi_\tau \neq 0$ ,  $\Gamma$  and  $G$  are a.s. everywhere dense.*

**PROOF.** We start with  $G$ . Recall the notation  $X_s^{(t)} := X_{t-} - X_{(t-s)-}$ ,  $0 \leq s \leq t$ . By duality, and thanks to Theorem 4.3, the law of  $X^{(t)}$  on finite intervals away from 0 and  $-\tau$  is that of the Lévy process  $Y$ . Now thanks to Corollary 3.5,  $H_s$  is the number of record times of the past supremum of  $X^{(s)}$ . As a consequence, to have  $H_s = \infty$ , it is sufficient that

$$\inf\{r \geq 0 : X_r^{(s)} > 0\} = 0.$$

But  $\inf\{r \geq 0 : X_r^{(s)} > 0\} = \inf\{r \geq s : X_r^{(t)} > X_s^{(t)}\}$ , so it suffices to show that for any finite interval  $I$ ,

$$P(\{s \in I : \inf\{r \geq s : Y_r > Y_s\} = 0\} \text{ is dense}) = 1.$$

On the one hand, when  $\Lambda$  is infinite, the Hausdorff dimension of the set of times when the path of  $Y$  has Hölder exponent  $h(s) < 1$ , is strictly positive a.s. [11]. On the other hand, it is easily seen that

$$P(\forall s \in I, \inf\{r \geq s : Y_r > Y_s\} > 0 \Rightarrow h(s) = 1) = 1$$

which entails

$$P(\dim_H(\{s \in I : \inf\{r \geq s : Y_r > Y_s\} = 0\}) > 0) = 1$$

which in turn yields the desired result (the interval  $I$  being arbitrary).

Now let us prove that  $\Gamma$  is everywhere dense a.s. Conditionally on  $\Xi_\tau \neq 0$ , because  $G$  is everywhere dense and  $X$  is right-continuous, the closure of the range of  $G$  by  $X$  is  $[0, \tau]$ . Since  $s \in G \Leftrightarrow \varphi(s) \in \partial\mathbb{T}$ , we can conclude with Lemma 5.2.  $\square$

5.1.3. *The coalescent point process.* Fix  $\tau > 0$ . For any chronological tree  $\mathbb{T}$ , we let  $(x_i(\tau); 1 \leq i \leq \Xi_\tau)$  denote the ranked points  $x_1 \leq x_2 \leq \dots$  of  $\mathbb{T}$  such that  $p_2(x_i) = \tau$ . In particular, the vertices  $p_1(x_i)$  of  $\mathbb{T}$  are exactly the individuals alive at level  $\tau$ .

THEOREM 5.4. *Conditional on  $\Xi_\tau = n \geq 1$ , let*

$$a_i := \begin{cases} p_2(x_i \wedge x_{i+1}), & \text{if } i \in \{1, \dots, n - 1\}, \\ 0, & \text{if } i = n. \end{cases}$$

*Then under  $\mathbb{P}_\chi(\cdot | \Xi_\tau \neq 0)$ ,  $(a_i; 1 \leq i \leq \Xi_\tau)$  is a sequence of i.i.d. r.v. stopped at its first 0, whose common distribution is that of  $A := \inf Y_t$  where  $Y$  is the Lévy process with Laplace exponent  $\psi$  started at  $\tau$  and killed upon exiting  $(0, \tau]$ .*

*In particular, the duration  $C$  elapsed since coalescence between two consecutive individuals (if any) has*

$$\mathbb{P}(C \leq \sigma) = \mathbb{P}(A > \tau - \sigma | A \neq 0) = \frac{1 - 1/W(\sigma)}{1 - 1/W(\tau)}, \quad 0 \leq \sigma \leq \tau.$$

*Furthermore, the coalescence level between  $x_j(\tau)$  and  $x_k(\tau)$  ( $j \leq k$ ) is given by*

$$p_2(x_j(\tau) \wedge x_k(\tau)) = \min\{a_i : j \leq i < k\}.$$

Coalescence levels can be seen on Figure 5.

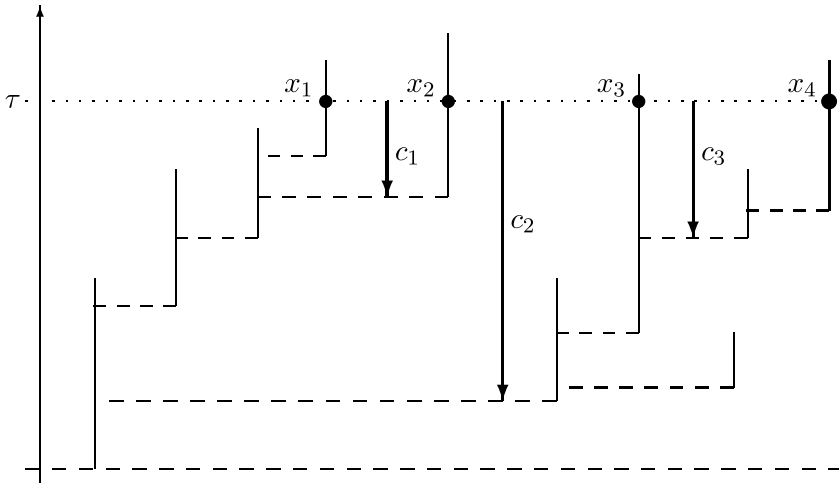


FIG. 5. *Illustration of a chronological tree showing the durations  $c_1, c_2, c_3$  elapsed since coalescence for each of the three consecutive pairs  $(x_1, x_2)$ ,  $(x_2, x_3)$  and  $(x_3, x_4)$  of the  $\Xi_\tau = 4$  individuals alive at level  $\tau$ .*

REMARK 4. Taking  $\Lambda(dz) = be^{-bz} dz$ , one can recover Lemma 3 in [24]. Namely, since an elementary calculation yields  $W(x) = 1 + bx$ ,

$$\mathbb{P}(C \in d\sigma) = \frac{1 + b\tau}{\tau} \frac{1}{(1 + b\sigma)^2}, \quad \sigma \leq \tau.$$

For the proof of Theorem 5.4, we will need the following claim on chronological trees.

CLAIM. For any chronological tree  $\mathbb{T}$ , and any three points  $x, y, z \in \mathbb{T}$  such that  $x \leq y \leq z$ , then  $x \wedge z \prec x \wedge y$  and  $x \wedge z \prec y \wedge z$ . In addition,

$$(12) \quad x \wedge z \in \{x \wedge y, y \wedge z\}.$$

PROOF. Recall from Theorem 3.4(ii) that  $y \prec x$  iff  $\hat{t} \leq s \leq t$ . Now let  $x \leq y \leq z$ , and set  $a = \varphi(x)$ ,  $b = \varphi(y)$ ,  $c = \varphi(z)$ ,  $s = \varphi(x \wedge y)$ , and  $t = \varphi(y \wedge z)$ . Then since  $x \wedge y \prec x, y$ , and  $y \wedge z \prec y, z$ , we get

$$\hat{s} \leq a \leq b \leq s \quad \text{and} \quad \hat{t} \leq b \leq c \leq t.$$

First, we show that  $x \wedge z \prec y$ . Indeed, writing  $r = \varphi(x \wedge z)$ , we have  $\hat{r} \leq a \leq c \leq r$ , but since  $a \leq b \leq c$ , we get  $\hat{r} \leq b \leq r$  which is exactly  $x \wedge z \prec y$ . Then notice that since  $x \wedge z \prec y$  and  $x \wedge z \prec x, z$ , we always have  $x \wedge z \prec y \wedge z$  and  $x \wedge z \prec x \wedge y$ . This is the first assertion of the claim.

Next, we show that (12)  $\Leftrightarrow$  (13) where

$$(13) \quad x \wedge y \prec z \quad \text{or} \quad y \wedge z \prec x.$$

Assume (13). If  $x \wedge y \prec z$ , then since  $x \wedge y \prec x$ , we get  $x \wedge y \prec x \wedge z$ ; on the other hand, thanks to the first assertion of the claim,  $x \wedge z \prec x \wedge y$ , so that  $x \wedge z = x \wedge y$ . The same reasoning shows that if  $y \wedge z \prec x$ , then  $x \wedge z = y \wedge z$ . Thus we have shown (13)  $\Rightarrow$  (12), and the converse implication is straightforward.

Now observe that (13) is equivalent to

$$\hat{s} \leq c \leq s \quad \text{or} \quad \hat{t} \leq a \leq t.$$

To prove (12), we assume that the last assertion does not hold, and show that this will bring a contradiction. Indeed, if the last display does not hold, then  $c > s$  and  $a > t$ , so that

$$\hat{s} \leq a < \hat{t} \leq b \leq s < c \leq t.$$

In particular, we can extract from the last display the following two double inequalities:  $\hat{s} \leq \hat{t} \leq s$  as well as  $\hat{t} \leq s \leq t$ , which reads also as

$$\varphi^{-1}(t) \prec \varphi^{-1}(s) \prec \varphi^{-1}(\hat{t}).$$



Writing  $\varphi^{-1}(s) = (u, \sigma)$  and  $\varphi^{-1}(t) = (v, \tau)$ , and recalling from Theorem 3.4(i) that  $\varphi^{-1}(\hat{s}) = (u, \omega(u))$  and  $\varphi^{-1}(\hat{t}) = (v, \omega(v))$ , we see that  $(u, \sigma)$  is in the segment  $[(v, \tau), (v, \omega(v))]$ , from which we conclude that  $u = v$ . Therefore,  $\hat{s} = \hat{t}$ , which contradicts the fact that  $\hat{s} \leq a < \hat{t}$ .  $\square$

**PROOF OF THEOREM 5.4.** Let us start with the last assertion of the theorem. A straightforward consequence of the claim is that for any  $x \leq y \leq z$ , we have  $p_2(x \wedge z) = \min(p_2(x \wedge y), p_2(y \wedge z))$ . Indeed, from  $x \wedge z < x \wedge y$  and  $x \wedge z < y \wedge z$ , we get  $p_2(x \wedge z) \leq \min(p_2(x \wedge y), p_2(y \wedge z))$ , and the converse inequality stems from (12). The last assertion of the theorem then follows from a recursive application of this property.

Next, recall from Theorem 4.3 the following recursive definition:  $t_0 = 0$  and  $t_{i+1} = \inf\{t > t_i : X_t^{(\tau)} \in \{0, \tau\}\}$ . Then abusing notation [confounding those for  $\mathbb{T}$  and  $C_\tau(\mathbb{T})$ ], we have  $t_i = \varphi(x_i)$ , and by Theorem 3.4(iii), we get that for any  $1 \leq i \leq \Xi_\tau$ ,  $a_i$  is given by

$$a_i = \inf_{t_i \leq t \leq t_{i+1}} X_t^{(\tau)}.$$

But thanks to Theorem 4.3, under  $\mathbb{P}_\chi(\cdot | \Xi_\tau \neq 0)$ , the killed paths  $e_i := (X_{t_i+t}^{(\tau)}, 0 \leq t < t_{i+1} - t_i)$ ,  $i \geq 1$ , form a sequence of i.i.d. excursions, distributed as the Lévy process  $Y$  started at  $\tau$ , killed upon exiting  $(0, \tau]$ , ending at the first excursion hitting 0 before  $(\tau, +\infty)$ . It is then straightforward that  $(a_i; 1 \leq i \leq \Xi_\tau)$  is a sequence of i.i.d. r.v., stopped at its first 0, and distributed as  $A$ , where, thanks to the preliminaries on Lévy processes,

$$\begin{aligned} \mathbb{P}(A \leq \sigma) &= P_\tau(Y \text{ exits } (\sigma, \tau] \text{ at the bottom}) \\ &= W(0)/W(\tau - \sigma) = 1/W(\tau - \sigma), \quad \sigma \in [0, \tau]. \end{aligned}$$

The fact that  $W(0) = 1$  can be deduced from a Tauberian theorem, checking that  $\psi(\lambda)/\lambda$  converges to 1 as  $\lambda \rightarrow \infty$ . In particular, the duration  $C = \tau - A$  elapsed since coalescence between two consecutive individuals has

$$\mathbb{P}(C \leq \sigma) = \frac{\mathbb{P}(A > \tau - \sigma)}{\mathbb{P}(A \neq 0)} = \frac{1 - 1/W(\sigma)}{1 - 1/W(\tau)}$$

which completes the proof.  $\square$

**5.2. Ages and residual lifetimes.** We hope that the last subsection has convinced the reader that multiple uses of Theorem 4.3 can be made by applying standard results on Lévy processes to one’s favourite question of population biology. Hereafter, we give a simple example, in the form of a statement on ages and residual lifetimes of living individuals. The proof of this statement is left to the reader, since it relies on the same analysis as done in that of Theorem 5.4.

Fix  $\tau > 0$ . As in the previous subsection, we let  $(x_i(\tau); 1 \leq i \leq \Xi_\tau)$  denote the ranked points  $x_1 \leq x_2 \leq \dots$  of  $\mathbb{T}$  such that  $p_2(x_i) = \tau$ . Set also  $u_i := p_1(x_i)$  the

$i$ th individual of  $\mathcal{T}$  who is alive at level  $\tau$ . Then for  $1 \leq i \leq \Xi_\tau$ ,

$$A_i := \tau - \alpha(u_i) \quad \text{and} \quad R_i := \omega(u_i) - \tau,$$

define respectively the *age* and *residual lifetime* of  $u_i$  at “time”  $\tau$ .

PROPOSITION 5.5. *Under  $\mathbb{P}_\chi$ , conditional on  $\Xi_\tau = n \geq 2$ , the individuals  $(u_i; 2 \leq i \leq n)$  alive at time  $\tau$  except  $u_1$ , have i.i.d. ages and residual lifetimes, whose common distribution is independent of  $\chi$  and equal to that of a pair  $(A_\tau, R_\tau)$  such that*

$$\mathbb{P}(A_\tau \in dx, R_\tau \in dy) = P_0(-Y_{T_{(0,\infty]}-} \in dx, Y_{T_{(0,\infty]}} \in dy \mid T_{(0,\infty]} < T_{-\tau}),$$

$$0 < x < \tau, y > 0,$$

where  $Y$  is the spectrally positive Lévy process with Laplace exponent  $\psi$ .

5.3. *Properties of the Crump–Mode–Jagers process.* Figure 6 shows the graph of a typical Laplace exponent  $\psi$  in the finite case and the link with population parameters of the Crump–Mode–Jagers process.

PROPOSITION 5.6. *The probability of extinction is  $\mathbb{P}_\chi(\text{Ext}) = e^{-\eta\chi}$ . In addition, the one-dimensional marginal of  $\Xi$  is given by*

$$\mathbb{P}_\chi(\Xi_\tau = 0) = W(\tau - \chi) / W(\tau),$$

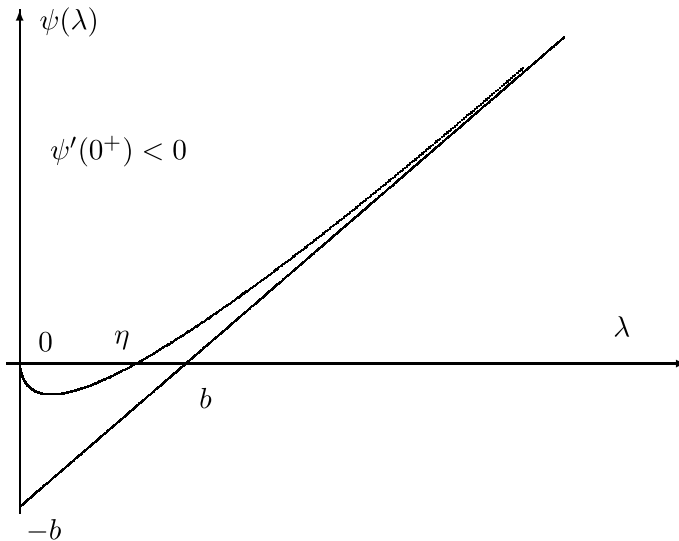


FIG. 6. Graph of the Laplace exponent  $\psi$  of the Lévy process  $Y$  (in the finite case). In this example is shown a supercritical exponent, with positive largest root  $\eta$ , such that  $\psi(0) = 0$  (i.e.  $\Lambda(\{+\infty\}) = 0$ ). The root  $\eta$  is the Malthusian parameter of the CMJ process. In the finite case, note that because  $\psi$  is convex, and  $\psi(\lambda) \geq \lambda - b$ , one has  $\eta < b$ .

and conditional on being nonzero,  $\Xi_\tau$  has a geometric distribution with success probability  $1/W(\tau)$ . In particular,  $\mathbb{E}_\chi(\Xi_\tau | \Xi_\tau \neq 0) = W(\tau)$ .

PROOF. The value of the extinction probability stems straightforwardly from Proposition 2.2 and Theorem 4.1.

Since  $\Xi_\tau = 0$  iff the first excursion of  $X^{(\tau)}$  hits 0 before  $(\tau, \infty)$ , Theorem 4.3(i) entails

$$\mathbb{P}_\chi(\Xi_\tau = 0) = P_\chi(T_0 < T_{(\tau, +\infty)}) = W(\tau - \chi) / W(\tau).$$

Now thanks to Theorem 4.3(i) again, conditional on being nonzero,  $\Xi_\tau$  is the length of a sequence of i.i.d. excursions of  $Y$  starting from  $\tau$  and killed upon exiting  $(0, \tau]$ , stopped at the first one that exits it from the bottom. As a consequence, the conditional distribution of  $\Xi_\tau$  is geometric with success probability,

$$P_\tau(T_0 < T_{(\tau, +\infty)}) = 1/W(\tau).$$

The computation of  $\mathbb{E}_\chi(\Xi_\tau | \Xi_\tau \neq 0)$  is then straightforward.  $\square$

PROPOSITION 5.7. Set  $\mathbb{P}^\natural := \mathbb{P}(\cdot | \text{Ext})$ . Under  $\mathbb{P}^\natural$ , the (supercritical) splitting tree has the same law as the subcritical splitting tree with lifespan measure  $e^{-\eta r} \Lambda(dr)$ . In particular, in the finite case, its birth rate equals  $b - \eta$ .

PROOF. Thanks to Theorem 4.3(ii), we know that under  $\mathbb{P}^\natural$ , the JCCP  $X$  is a spectrally positive Lévy process with Laplace exponent  $\psi$  conditioned on hitting 0. Now it is known [3] that this conditioned Lévy process is a spectrally positive Lévy process with Laplace exponent  $\psi^\natural$  where  $\psi^\natural(\lambda) = \psi(\lambda + \eta)$ . It is straightforward to obtain the following equality:

$$\psi^\natural(\lambda) = \lambda - \int_0^\infty e^{-\eta r} (1 - e^{-\lambda r}) \Lambda(dr), \quad \lambda \geq 0,$$

which proves that under  $\mathbb{P}^\natural$ ,  $X$  is the JCCP of a splitting tree with lifespan measure  $e^{-\eta r} \Lambda(dr)$ . It is indeed a subcritical splitting tree, since  $\psi^\natural(0) = \psi(\eta) = 0$  and  $\psi^{\natural\prime}(0^+) = \psi'(\eta) > 0$ . Another elementary calculation shows that in the finite case, the birth rate  $b^\natural = \int_0^\infty e^{-\eta r} \Lambda(dr)$  of this splitting tree equals  $b - \eta$ .  $\square$

PROPOSITION 5.8. The asymptotic behavior of  $\Xi$  is as follows:

(i) (Yaglom’s distribution) In the subcritical case,

$$\lim_{\tau \rightarrow \infty} \mathbb{P}(\Xi_\tau = n | \Xi_\tau \neq 0) = m^{n-1} (1 - m), \quad n \geq 1.$$

(ii) In the critical case, provided that  $\int^\infty r^2 \Lambda(dr) < \infty$ ,

$$\lim_{\tau \rightarrow \infty} \mathbb{P}(\Xi_\tau / \tau > x | \Xi_\tau \neq 0) = \exp(-\psi''(0^+)x/2), \quad x \geq 0.$$

(iii) *In the supercritical case, conditional on  $\text{Ext}^c$ ,*

$$\lim_{\tau \rightarrow \infty} e^{-\eta\tau} \Xi_\tau \stackrel{\mathcal{L}}{=} \xi,$$

where  $\xi$  is an exponential variable with parameter  $\psi'(\eta)$ .

REMARK 5. Whereas the convergence stated in (iii) certainly holds solely in distribution when  $\Lambda$  is infinite (because of Theorem 5.3), there is actually pathwise convergence in the finite case under some additional conditions on  $\Lambda$ [22]. Thanks to this result,  $\eta$  is seen to be the so-called *Malthusian parameter*.

PROOF OF PROPOSITION 5.8. We know from Proposition 5.6 that conditional on being nonzero,  $\Xi_\tau$  is geometric with success probability  $1/W(\tau)$ .

In the subcritical case ( $\psi(0) = 0$  and  $\psi'(0^+) = 1 - m > 0$ ),  $\psi(\lambda)/\lambda$  converges to  $1 - m$  as  $\lambda$  vanishes, so a Tauberian theorem entails that  $W(\tau)$  converges to  $1/(1 - m)$  as  $\tau \rightarrow \infty$ . This proves (i).

In the critical case ( $\psi(0) = 0$  and  $\psi'(0^+) = 0$ ),  $\psi(\lambda)/\lambda^2$  converges to  $\psi''(0^+)/2$  as  $\lambda$  vanishes, so a Tauberian theorem entails that  $W(\tau)/\tau$  converges to  $2/\psi''(0^+)$  as  $\tau \rightarrow \infty$ . This proves (ii).

As for (iii), set  $W^\natural(x) := W(x)e^{-\eta x}$ . Then the Laplace transform of  $W^\natural$  is

$$\int_0^\infty W^\natural(x)e^{-\lambda x} dx = \frac{1}{\psi(\lambda + \eta)}, \quad \lambda \geq 0,$$

which is equivalent to  $1/\psi'(\eta)\lambda$  as  $\lambda$  vanishes. As previously, we deduce that  $W^\natural(\tau)$  converges to  $1/\psi'(\eta)$  as  $\tau \rightarrow \infty$ , which reads

$$\lim_{\tau \rightarrow \infty} W(\tau)e^{-\eta\tau} = \frac{1}{\psi'(\eta)}.$$

The convergence in distribution then follows from the asymptotic equality between  $\mathbb{P}(\Xi_\tau e^{-\eta\tau} \in \cdot \mid \Xi_\tau \neq 0)$  and  $\mathbb{P}(\Xi_\tau e^{-\eta\tau} \in \cdot \mid \text{Ext}^c)$ .  $\square$

Actually, we can go a little further than the previous proposition, by distinguishing between points whose descendance is either finite or infinite. Recall that finiteness here refers to the first projection of the tree (discrete part), and set

$$\Xi_\tau^\infty := \text{Card}\{x \in \mathbb{T} : p_2(x) = \tau, \theta(x) \text{ is infinite}\},$$

$$\Xi_\tau^f := \text{Card}\{x \in \mathbb{T} : p_2(x) = \tau, \theta(x) \text{ is finite}\}.$$

In particular,  $\Xi_\tau^\infty + \Xi_\tau^f = \Xi_\tau$ .

PROPOSITION 5.9. *Set  $p := \psi'(\eta) \leq 1$ . In the supercritical case, conditional on  $\text{Ext}^c$ ,*

$$\lim_{\tau \rightarrow \infty} e^{-\eta\tau} (\Xi_\tau^\infty, \Xi_\tau^f) \stackrel{\mathcal{L}}{=} (p\xi, (1 - p)\xi),$$

where  $\xi$  is an exponential variable with parameter  $p$ . In particular,  $e^{-\eta\tau} \Xi_\tau^\infty$  converges in distribution to an exponential variable with parameter 1.

REMARK 6. In a work in preparation [17] (see also [15]), we show that actually,  $(\Xi_\tau^\infty; \tau \geq 0)$  is Markovian, and, more precisely, that it is a *Yule process* with birth rate  $\eta$ . In particular, the convergence of  $e^{-\eta\tau} \Xi_\tau^\infty$  to an exponential variable with parameter 1 is known to be *pathwise*.

PROOF OF PROPOSITION 5.9. We use the notation of Proposition 5.5. Each individual  $u_i$  alive at level  $\tau$  has infinite descendance iff the splitting tree starting from  $u_i \times (\tau, \omega(u_i))$  is infinite, which, conditionally on the residual lifetime  $R_i := \omega(u_i) - \tau$ , occurs with probability  $1 - e^{-\eta R_i}$ . Now thanks to Proposition 5.5, conditionally on  $\Xi_\tau = n \geq 2$ , the residual lifetimes of the individuals  $(u_i; 2 \leq i \leq n)$  are i.i.d., all distributed as  $R_\tau$ . As a consequence, by the branching property, the conditional distribution of  $(\Xi_\tau^\infty, \Xi_\tau^f)$ , modulo the first individual  $u_1$  (which is negligible as the population size goes to infinity), is that of  $(B, n - 1 - B)$  where  $B$  is a binomial variable with parameters  $p_\tau$  and  $n - 1$ , and  $p_\tau := E(1 - e^{-\eta R_\tau})$ . Conditional on nonextinction, the only change is that  $B$  is conditioned to be greater than 1. Now since the population size goes to infinity as  $\tau \rightarrow \infty$ , this last conditioning vanishes, but above all,  $(\Xi_\tau^\infty, \Xi_\tau^f) / \Xi_\tau$  converges in probability to  $(p_\infty, 1 - p_\infty)$ , with  $p_\infty := \lim_\tau p_\tau$ . Therefore, it only remains to show that  $p_\infty = p$ , since we know from Proposition 5.8 that  $e^{-\eta\tau} \Xi_\tau$  converges in law to  $\xi$ . Now recall that  $p_\tau = E(1 - e^{-\eta R_\tau})$ , and observe that  $R_\tau$  converges in distribution, as  $\tau \rightarrow \infty$ , to the law of  $Y_{T_{(0,\infty]}}$  under  $P_0$ . Summing up, we have to prove that

$$p = E_0(1 - \exp(-\eta Y_{T_{(0,\infty]}})).$$

As a first step, we apply the compensation formula to the Poisson point process  $(\Delta_s; s \geq 0)$  of jumps of  $Y$ . Denoting by  $S_t$  the past supremum of  $Y$  at time  $t$ , we get, for any  $\lambda \geq 0$ ,

$$\begin{aligned} & E_0(\exp(-\lambda Y_{T_{(0,\infty]}})) \\ &= E_0 \sum_{t:\Delta_t>0} \mathbf{1}_{\{S_{t-}=0\}} \exp(-\lambda(Y_{t-} + \Delta_t)) \mathbf{1}_{\{Y_{t-} + \Delta_t > 0\}} \\ &= E_0 \int_0^\infty dt \int_0^\infty \Lambda(dr) \mathbf{1}_{\{S_t=0\}} \exp(-\lambda(Y_t + r)) \mathbf{1}_{\{Y_t+r>0\}} \\ &= \int_0^\infty \Lambda(dr) e^{-\lambda r} \int_0^r \mu_0(dx) e^{\lambda x}, \end{aligned}$$

where we have set

$$\mu_0(dx) := E_0 \int_0^{T_{(0,\infty]}} dt \mathbf{1}_{\{-Y_t \in dx\}}, \quad x > 0.$$

In order to compute an expression for  $\mu_0$ , we also define

$$\mu(dx) := E_0 \int_0^\infty dt \mathbf{1}_{\{-Y_t \in dx\}}, \quad x > 0.$$

Because  $Y$  has derivative a.s. equal to  $-1$  when it hits  $-x$ , we deduce that  $\mu(dx) = E_0(N_x) dx$ , where  $N_x$  is the number of passage times at  $-x$ . As a consequence, applying the strong Markov property at  $T_{-x}$ , we get (see preliminaries)

$$\mu(dx) = P_0(T_{-x} < \infty) E_{-x}(N_x) dx = E_0(N_0) e^{-\eta x} dx, \quad x > 0.$$

On the other hand, applying the strong Markov property at the successive hitting times of  $0$  under  $P_0$ , say  $0 = S_1 < S_2 < \dots < S_{N_0} < S_{N_0+1} = \infty$ , we get

$$\mu(dx) = E_0 \sum_{n=1}^{N_0} \int_{S_n}^{S_{n+1}} dt \mathbf{1}_{\{-Y_t \in dx\}} = E_0(N_0) \mu_0(dx)$$

so that, in conclusion,

$$\mu_0(dx) = e^{-\eta x} dx, \quad x > 0.$$

Therefore, for any  $\lambda \geq 0$ ,

$$E_0(\exp(-\lambda Y_{T_{(0,\infty)}})) = \int_0^\infty \Lambda(dr) e^{-\lambda r} \int_0^r e^{(\lambda-\eta)x},$$

so, in particular,

$$E_0(\exp(-\eta Y_{T_{(0,\infty)}})) = \int_0^\infty \Lambda(dr) r e^{-\eta r} = 1 - \psi'(\eta)$$

which is the desired result.  $\square$

*The Markovian (finite) case.* There are two possibilities for  $(\Xi_\tau; \tau \geq 0)$  to be Markovian.

First, when  $\Lambda$  is a Dirac mass at  $\{\infty\}$  (with mass  $b$ ),  $(\Xi_\tau; \tau \geq 0)$  is a pure-birth process (with rate  $b$ ), and since  $\psi(\lambda) = \lambda - b$ , we get  $W(x) = \exp(bx)$ , so that the size of the population at “time”  $\tau$  is (shifted) geometric with success probability  $\exp(-b\tau)$ .

Second, when  $\Lambda$  is exponential, with parameter, say  $d$ , then  $(\Xi_\tau; \tau \geq 0)$  is a birth–death process with birth rate  $b$  and death rate  $d$  (supercritical iff  $b > d$ ) so that  $\Lambda(dr) = b d e^{-dr} dr$ . Then we have

$$\psi(\lambda) = \lambda - \frac{b\lambda}{d + \lambda}, \quad \lambda \geq 0.$$

In particular,  $\eta = b - d$  and  $\psi'(\eta) = 1 - (d/b)$ . The scale function (see also Remark 4) is  $W(x) = 1 + bx$  in the critical case ( $d = b$ ), and in all other cases,

$$W(x) = \frac{d - b e^{(b-d)x}}{d - b}, \quad x \geq 0.$$

One recovers that conditional on being nonzero, the size of the population at “time”  $\tau$  is geometric with success probability  $(d - b)/(d - be^{(b-d)\tau})$ . In the supercritical case, conditional on nonextinction, the fraction of individuals with *finite* descendance converges in probability to  $d/b$ , whereas the number of individuals with *infinite* descendance is a Yule process with birth rate  $b - d$ .

**Acknowledgments.** I would like to thank Jean Bertoin, Thomas Duquesne, Grégory Miermont and Lea Popovic, for some nice and interactive discussions. I also want to acknowledge the clear-sightedness of an anonymous referee who pointed a few awkward passages, and thereby allowed this work to attain its present form.

## REFERENCES

- [1] ALDOUS, D. (1991). The continuum random tree. I. *Ann. Probab.* **19** 1–28. [MR1085326](#)
- [2] ALDOUS, D. (1993). The continuum random tree. III. *Ann. Probab.* **21** 248–289. [MR1207226](#)
- [3] BERTOIN, J. (1996). *Lévy Processes. Cambridge Tracts in Mathematics* **121**. Cambridge Univ. Press, Cambridge. [MR1406564](#)
- [4] BERTOIN, J., FONTBONA, J. and MARTÍNEZ, S. (2008). On prolific individuals in a supercritical continuous-state branching process. *J. Appl. Probab.* **45** 714–726. [MR2455180](#)
- [5] BERTOIN, J. and LE GALL, J.-F. (2000). The Bolthausen–Sznitman coalescent and the genealogy of continuous-state branching processes. *Probab. Theory Related Fields* **117** 249–266. [MR1771663](#)
- [6] DRESS, A. W. M. and TERHALLE, W. F. (1996). The real tree. *Adv. Math.* **120** 283–301. [MR1397084](#)
- [7] DUQUESNE, T. (2007). The coding of compact real trees by real valued functions. Preprint. Available at arXiv [PR/0604106](#).
- [8] DUQUESNE, T. and LE GALL, J. F. (2002). Random trees, Lévy processes and spatial branching processes. *Astérisque* **281** 1–147.
- [9] EVANS, S. N. (2009). *Probability and Real Trees. Lecture Notes in Math.* **1920**. Springer, Berlin. [MR2351587](#)
- [10] GEIGER, J. and KERSTING, G. (1997). Depth-first search of random trees, and Poisson point processes. In *Classical and Modern Branching Processes (Minneapolis, MN, 1994)*. *IMA Math. Appl.* **84** 111–126. Springer, New York. [MR1601713](#)
- [11] JAFFARD, S. (1999). The multifractal nature of Lévy processes. *Probab. Theory Related Fields* **114** 207–227. [MR1701520](#)
- [12] JIŘINA, M. (1958). Stochastic branching processes with continuous state space. *Czechoslovak Math. J.* **8** 292–313. [MR0101554](#)
- [13] LAMBERT, A. (2002). The genealogy of continuous-state branching processes with immigration. *Probab. Theory Related Fields* **122** 42–70. [MR1883717](#)
- [14] LAMBERT, A. (2003). Coalescence times for the branching process. *Adv. in Appl. Probab.* **35** 1071–1089. [MR2014270](#)
- [15] LAMBERT, A. (2008). Population dynamics and random genealogies. *Stoch. Models* **24** 45–163. [MR2466449](#)
- [16] LAMBERT, A. (2009). The allelic partition for coalescent point processes. *Markov Processes Relat. Fields*. Preprint. To appear. Available at arXiv:[0804.2572v2](#).
- [17] LAMBERT, A. (2010). Spine decompositions of Lévy trees. To appear. In preparation.
- [18] LE GALL, J.-F. (1993). The uniform random tree in a Brownian excursion. *Probab. Theory Related Fields* **96** 369–383. [MR1231930](#)

- [19] LE GALL, J.-F. (2005). Random trees and applications. *Probab. Surv.* **2** 245–311 (electronic). [MR2203728](#)
- [20] LE GALL, J.-F. and LE JAN, Y. (1998). Branching processes in Lévy processes: The exploration process. *Ann. Probab.* **26** 213–252. [MR1617047](#)
- [21] NEVEU, J. (1986). Arbres et processus de Galton–Watson. *Ann. Inst. H. Poincaré Probab. Statist.* **22** 199–207. [MR850756](#)
- [22] NERMAN, O. (1981). On the convergence of supercritical general (C–M–J) branching processes. *Z. Wahrsch. Verw. Gebiete* **57** 365–395. [MR629532](#)
- [23] O’CONNELL, N. (1995). The genealogy of branching processes and the age of our most recent common ancestor. *Adv. in Appl. Probab.* **27** 418–442. [MR1334822](#)
- [24] POPOVIC, L. (2004). Asymptotic genealogy of a critical branching process. *Ann. Appl. Probab.* **14** 2120–2148. [MR2100386](#)
- [25] REVUZ, D. and YOR, M. (1999). *Continuous Martingales and Brownian Motion*, 3rd ed. *Grundlehren der Mathematischen Wissenschaften [Fundamental Principles of Mathematical Sciences]* **293**. Springer, Berlin. [MR1725357](#)
- [26] TAÏB, Z. (1992). *Branching Processes and Neutral Evolution. Lecture Notes in Biomathematics* **93**. Springer, Berlin. [MR1176317](#)

LABORATOIRE DE PROBABILITÉS  
ET MODÈLES ALÉATOIRES  
UMR 7599 CNRS AND UPMC UNIVERSITÉ PARIS 06  
CASE COURRIER 188  
4 PLACE JUSSIEU  
F-75252 PARIS CEDEX 05  
FRANCE  
E-MAIL: [amaury.lambert@upmc.fr](mailto:amaury.lambert@upmc.fr)