

THE SYMPLECTIC GEOMETRY OF PENROSE RHOMBUS TILINGS

FIAMMETTA BATTAGLIA AND ELISA PRATO

The purpose of this article is to view Penrose rhombus tilings from the perspective of symplectic geometry. We show that each thick rhombus in such a tiling can be naturally associated to a highly singular 4-dimensional compact symplectic space M_R , while each thin rhombus can be associated to another such space M_r ; both spaces are invariant under the Hamiltonian action of a 2-dimensional quasitorus, and the images of the corresponding moment mappings give the rhombuses back. The spaces M_R and M_r are diffeomorphic but not symplectomorphic.

1. Introduction

We start by considering a Penrose tiling by thick and thin rhombuses (cf. [11]). Rhombuses are very special examples of simple convex polytopes. Because of the Atiyah, Guillemin–Sternberg convexity theorem [1, 8], convex polytopes can arise as images of the moment mapping for Hamiltonian torus actions on compact symplectic manifolds. For example, simple convex polytopes, that are rational with respect to a lattice L and satisfy an additional integrality condition, correspond to symplectic toric manifolds. More precisely, the Delzant theorem [6] tells us that to each such polytope in $(\mathbb{R}^n)^*$, there corresponds a compact symplectic $2n$ -dimensional manifold M , endowed with the effective Hamiltonian action of a torus of dimension n . As it turns out, the polytope is exactly the image of the corresponding moment mapping. One of the striking features of Delzant’s theorem is that it gives an explicit procedure to obtain the manifold corresponding to each given polytope as a symplectic reduced space. This correspondence may be applied to each of the rhombuses in a Penrose tiling separately. However, the rhombuses in a Penrose tiling, though simple and convex, are not simultaneously rational with respect to the same lattice. Therefore, we cannot apply the Delzant procedure simultaneously to all rhombuses in the tiling.

However, if we replace the lattice with a quasilattice (the \mathbb{Z} -span of a set of \mathbb{R} -spanning vectors) and the manifold with a suitably singular space, then it is possible to apply a generalization of the Delzant procedure to arbitrary simple convex polytopes that was given by the second-author in [14]. According to this result, to each simple convex polytope in $(\mathbb{R}^n)^*$, and to each suitably chosen quasilattice Q , one can associate a family of compact symplectic $2n$ -dimensional *quasifolds* M , each endowed with the effective Hamiltonian action of the quasitorus $(\mathbb{R}^n)^*/Q$, having the property that the image of the corresponding moment mapping is the polytope itself. Quasifolds are generalizations of manifolds and orbifolds that were introduced in [14]. A local model for a k -dimensional quasifold is given by the topological quotient of an open subset of \mathbb{R}^k by the action of a finitely generated group. A k -dimensional quasifold is a topological space admitting an atlas of k -dimensional local models that are suitably glued together. It is a highly singular, usually not even Hausdorff, space. A quasitorus is the natural generalization of a torus in this setting.

We remark that, unlike the Delzant case, we do not have here a one-to-one correspondence between polytopes and symplectic spaces. In fact, there is much more freedom of choice in the generalized Delzant construction, and infinitely many symplectic quasifolds will map to the same polytope. More precisely, given any suitable quasilattice Q , the construction will yield one quasifold for each choice of a set of vectors X_1, \dots, X_d in Q , each of which is orthogonal and pointing inwards to one of the d different facets of the polytope. The striking fact in the case of a Penrose tiling is that there is a natural choice of a quasilattice and of a set of inward-pointing vectors, and therefore a natural choice of a privileged quasifold mapping to each tile. In fact, let us consider a Penrose rhombus tiling where all rhombuses have edges of length 1; we will see in Section 2 that such a tiling determines a star of five unit vectors, pointing to the vertices of a regular pentagon. One of the features of the tiling is that the four edges of any given rhombus in the tiling are orthogonal to two of these five vectors. These two vectors, and their opposites, will be our natural choice of the four inward-pointing vectors in the Delzant construction. The span over the integers of the five vectors in the star is dense in \mathbb{R}^2 , this is the quasilattice that is associated to the tiling, and will be our choice of quasilattice.

Moreover, we show that all the different rhombuses yield only two possible compact symplectic quasifolds: one for all the thick rhombuses, M_R , and one for all the thin ones, M_r . Both are global quotients of a product of two spheres modulo the action of a finitely generated group; they are diffeomorphic, but not symplectomorphic. Notice that, in general, a quasifold is not a global quotient of a manifold modulo the action of a finitely generated group, in fact most of the examples are not, see the examples worked out in [14] and the quasifold corresponding to the Penrose kite in [4].

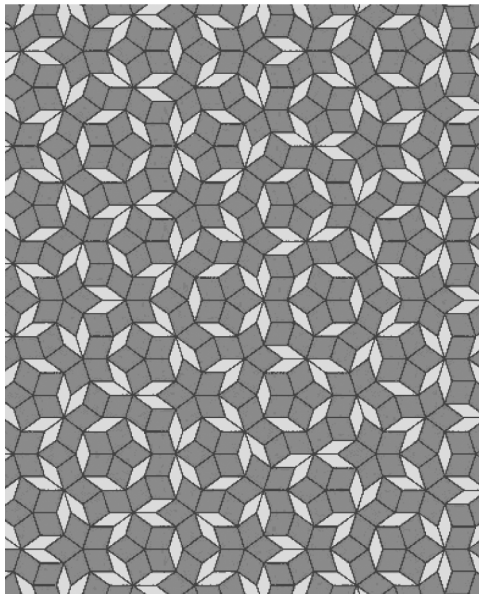


Figure 7. A Penrose rhombus tiling. Figure by Austin [2], reprinted courtesy of the AMS.

$$\begin{cases} Y_0^* = (0, 1), \\ Y_1^* = \frac{1}{2} \left(-\sqrt{2 + \phi}, \frac{1}{\phi} \right), \\ Y_2^* = \frac{1}{2} \left(-\frac{1}{\phi} \sqrt{2 + \phi}, -\phi \right), \\ Y_3^* = \frac{1}{2} \left(\frac{1}{\phi} \sqrt{2 + \phi}, -\phi \right), \\ Y_4^* = \frac{1}{2} \left(\sqrt{2 + \phi}, \frac{1}{\phi} \right). \end{cases}$$

Let R be the quasilattice generated by the vectors of \mathcal{S}^* , namely

$$R = \text{Span}_{\mathbb{Z}}\{Y_0^*, \dots, Y_4^*\}.$$

The quasilattice R is not a lattice, it is dense in \mathbb{R}^2 and a minimal set of generators of R is made of four vectors. The following statement describes the relationship between the Penrose rhombus tilings considered and the quasilattice R , together with its generators.

Let us consider the five thick rhombuses that are determined by Y_k^*, Y_{k+1}^* for $k = 0, \dots, 4$, we denote them by Δ_R^k , and the five thin rhombuses that are determined by Y_k^*, Y_{k+2}^* for $k = 0, \dots, 4$, we denote them by Δ_r^k (we are assuming here $Y_5^* = Y_0^*$ and $Y_6^* = Y_1^*$).

Definition 3.2 (Submodel). Consider a model $(\tilde{V}/\Gamma, p, \tilde{V})$, and let W be an open subset of \tilde{V}/Γ . We will say that W is a submodel of $(\tilde{V}/\Gamma, p, \tilde{V})$ if $(W, p, p^{-1}(W))$ defines a model.

Remark 3.3. Consider a model of dimension k , $(\tilde{V}/\Gamma, p, \tilde{V})$, such that there exists a covering $\pi : V^\sharp \rightarrow \tilde{V}$, where V^\sharp is an open subset of \mathbb{R}^k acted on by a finitely generated group Π in a smooth, free and proper fashion with $\tilde{V} = V^\sharp/\Pi$. Consider the extension of the group Γ by the group Π

$$1 \longrightarrow \Pi \longrightarrow \Gamma^\sharp \longrightarrow \Gamma \longrightarrow 1$$

defined as follows

$$\Gamma^\sharp = \left\{ \gamma^\sharp \in \text{Diff}(V^\sharp) \mid \exists \gamma \in \Gamma \text{ s.t. } \pi(\gamma^\sharp(u^\sharp)) = \gamma \circ \pi(u^\sharp) \forall u^\sharp \in V^\sharp \right\}.$$

It is easy to verify that Γ^\sharp is finitely generated, that it acts on V^\sharp according to the assumptions of Definition 3.1 and that $\tilde{V}/\Gamma = V^\sharp/\Gamma^\sharp$. Let $p^\sharp = p \circ \pi$, we will then say that the model $(V^\sharp/\Gamma^\sharp, p^\sharp, V^\sharp)$ is a covering of the model $(\tilde{V}/\Gamma, p, \tilde{V})$.

Definition 3.4 (Smooth mapping, diffeomorphism of models). Given two models $(\tilde{V}/\Gamma, p, \tilde{V})$ and $(\tilde{W}/\Delta, q, \tilde{W})$, a mapping $f : \tilde{V}/\Gamma \rightarrow \tilde{W}/\Delta$ is said to be *smooth* if there exist coverings in the sense of Remark 3.3 of the two given models, $(V^\sharp/\Gamma^\sharp, p^\sharp, V^\sharp)$ and $(W^\sharp/\Delta^\sharp, q^\sharp, W^\sharp)$, and a smooth mapping $f^\sharp : V^\sharp \rightarrow W^\sharp$, such that $q^\sharp \circ f^\sharp = f \circ p^\sharp$; we will then say that f^\sharp is a *lift* of f . We will say that the smooth mapping f is a diffeomorphism of models if it is bijective and if the lift f^\sharp is a diffeomorphism.

If the mapping f^\sharp is a lift of a smooth mapping of models $f : \tilde{U}/\Gamma \rightarrow \tilde{V}/\Delta$ so are the mappings $f^{\sharp\gamma}(-) = f^\sharp(\gamma \cdot -)$, for all elements γ in Γ^\sharp and $\delta f^\sharp(-) = \delta \cdot f^\sharp(-)$, for all elements δ in Δ^\sharp . We recall that if the mapping f is a diffeomorphism, then these are the only other possible lifts.

Lemma 3.5. Consider two models, \tilde{U}/Γ and \tilde{V}/Δ , and let $f : \tilde{U}/\Gamma \rightarrow \tilde{V}/\Delta$ be a diffeomorphism of models. For any two lifts, f^\sharp and \tilde{f}^\sharp , of the diffeomorphism f , there exists a unique element δ in Δ^\sharp such that $\tilde{f}^\sharp = \delta f^\sharp$.

Lemma 3.6. Consider two models, \tilde{U}/Γ and \tilde{V}/Δ , and a diffeomorphism $f : \tilde{U}/\Gamma \rightarrow \tilde{V}/\Delta$. Then for a given lift, f^\sharp , of the diffeomorphism f , there exists a group isomorphism $F : \Gamma^\sharp \rightarrow \Delta^\sharp$ such that $f^{\sharp\gamma} = F(\gamma) f^\sharp$ for all elements γ in Γ^\sharp .

Similarly to the notion of smooth mapping, it is possible to define other geometric objects on models, such as differential forms, symplectic forms and vector fields.

Definition 3.7 (Quasifold). A dimension k quasifold structure on a topological space M is the assignment of an *atlas*, or collection of charts, $\mathcal{A} = \{ (V_\alpha, \tau_\alpha, \tilde{V}_\alpha/\Gamma_\alpha) \mid \alpha \in A \}$ having the following properties:

- (1) The collection $\{ V_\alpha \mid \alpha \in A \}$ is a cover of M .
- (2) For each index α in A , the set V_α is open, the space $\tilde{V}_\alpha/\Gamma_\alpha$ defines a model, and the mapping τ_α is a homeomorphism of the space $\tilde{V}_\alpha/\Gamma_\alpha$ onto the set V_α .
- (3) For all indices α, β in A such that $V_\alpha \cap V_\beta \neq \emptyset$, the sets $\tau_\alpha^{-1}(V_\alpha \cap V_\beta)$ and $\tau_\beta^{-1}(V_\alpha \cap V_\beta)$ are submodels of $\tilde{V}_\alpha/\Gamma_\alpha$ and $\tilde{V}_\beta/\Gamma_\beta$, respectively, and the mapping

$$g_{\alpha\beta} = \tau_\beta^{-1} \circ \tau_\alpha : \tau_\alpha^{-1}(V_\alpha \cap V_\beta) \longrightarrow \tau_\beta^{-1}(V_\alpha \cap V_\beta)$$

is a diffeomorphism of models. We will then say that the mapping $g_{\alpha\beta}$ is a *change of charts* and that the corresponding charts are *compatible*.

- (4) The atlas \mathcal{A} is maximal, that is: if the triple $(V, \tau, \tilde{V}/\Gamma)$ satisfies property 2, and is compatible with all the charts in \mathcal{A} , then $(V, \tau, \tilde{V}/\Gamma)$ belongs to \mathcal{A} .

We will say that a space M with a quasifold structure is a *quasifold*.

Remark 3.8. Remark that, by the definition of diffeomorphism, finitely generated groups corresponding to different charts need not be isomorphic (see the fundamental example of the quasisphere in [14]).

Remark 3.9. To each point $m \in M$, there corresponds a finitely generated group Γ_m defined as follows: take a chart $(V_\alpha, \tau_\alpha, \tilde{V}_\alpha/\Gamma_\alpha)$ around m , then Γ_m is the isotropy group of Γ_α at any point $\tilde{v} \in \tilde{V}$, which projects down to m . One can check that this definition does not depend on the choice of the chart. If all the Γ_m 's are finite M is an orbifold, if they are trivial, then M is a manifold.

It is possible to define on any quasifold M the notions of smooth mapping, diffeomorphism, differential form, symplectic form and smooth vector field.

Definition 3.10 (Quasitorus). A *quasitorus* of dimension n is the quotient $\frac{\mathbb{R}^n}{Q}$, where Q is a quasilattice in \mathbb{R}^n .

We remark that a quasitorus is an example of quasifold covered by one chart. At this point, one can define the notion of Hamiltonian action of a quasitorus on a symplectic quasifold and the corresponding moment mapping.

4. The tiles from a symplectic viewpoint

We now outline the generalization of the Delzant procedure [6] to nonrational simple convex polytopes that is proven in [14]. We begin by recalling what is a

Definition 4.1 (Simple polytope). A dimension n convex polytope $\Delta \subset (\mathbb{R}^n)^*$ is said to be simple if there are exactly n edges stemming from each vertex.

Let us now consider a dimension n convex polytope $\Delta \subset (\mathbb{R}^n)^*$. If d is the number of facets of Δ , then there exist elements X_1, \dots, X_d in \mathbb{R}^n and $\lambda_1, \dots, \lambda_d$ in \mathbb{R} such that

$$(4.1) \quad \Delta = \bigcap_{j=1}^d \{\mu \in (\mathbb{R}^n)^* \mid \langle \mu, X_j \rangle \geq \lambda_j\}.$$

Definition 4.2 (Q -rational polytope). Let Q be a quasilattice in \mathbb{R}^n . A convex polytope $\Delta \subset (\mathbb{R}^n)^*$ is said to be Q -rational, if the vectors X_1, \dots, X_d can be chosen in Q .

All polytopes in $(\mathbb{R}^n)^*$ are Q -rational with respect to some quasilattice Q ; it is enough to consider the quasilattice that is generated by the elements X_1, \dots, X_d in equation (4.1). Notice that if the quasilattice is a honest lattice, then the polytope is rational.

In our situation, we only need to consider the special case of simple convex polytopes in 2-dimensional space. Let Q be a quasilattice in \mathbb{R}^2 , and let Δ be a simple convex polytope in the space $(\mathbb{R}^2)^*$ that is Q -rational. Consider the space \mathbb{C}^d endowed with the standard symplectic form $\omega_0 = \frac{1}{2\pi i} \sum_{j=1}^d dz_j \wedge d\bar{z}_j$ and the standard action of the torus $T^d = \mathbb{R}^d / \mathbb{Z}^d$:

$$\begin{aligned} \tau : T^d \times \mathbb{C}^d &\longrightarrow \mathbb{C}^d \\ ((e^{2\pi i \theta_1}, \dots, e^{2\pi i \theta_d}), \underline{z}) &\longmapsto (e^{2\pi i \theta_1} z_1, \dots, e^{2\pi i \theta_d} z_d). \end{aligned}$$

This action is effective, and Hamiltonian and its moment mapping is given by

$$\begin{aligned} J : \mathbb{C}^d &\longrightarrow (\mathbb{R}^d)^* \\ \underline{z} &\longmapsto \sum_{j=1}^d |z_j|^2 e_j^* + \lambda, \quad \lambda \in (\mathbb{R}^d)^* \text{ constant.} \end{aligned}$$

The mapping J is proper and its image is the cone $\mathcal{C}_\lambda = \lambda + \mathcal{C}_0$, where \mathcal{C}_0 denotes the positive orthant in the space $(\mathbb{R}^d)^*$. Now consider the surjective linear mapping

$$\begin{aligned} \pi : \mathbb{R}^d &\longrightarrow \mathbb{R}^2, \\ e_j &\longmapsto X_j \end{aligned}$$

and the dimension 2 quasitorus $D = \mathbb{R}^2/Q$. Then the linear mapping π induces a quasitorus epimorphism $\Pi : T^d \rightarrow D$. Define now N to be the kernel of the mapping Π and choose $\lambda = \sum_{j=1}^d \lambda_j e_j^*$. Denote by i the Lie algebra inclusion $\mathfrak{n} = \text{Lie}(N) \rightarrow \mathbb{R}^d$ and notice that $\Psi = i^* \circ J$ is a moment mapping for the induced action of N on \mathbb{C}^d . Then the quasitorus T^d/N acts in a Hamiltonian fashion on the compact symplectic quasifold $M = \Psi^{-1}(0)/N$. If we identify the quasitori D and T^d/N using the epimorphism Π , we get a Hamiltonian action of the quasitorus D whose moment mapping has image equal to $(\pi^*)^{-1}(\mathcal{C}_\lambda \cap \ker i^*) = (\pi^*)^{-1}(\mathcal{C}_\lambda \cap \text{im } \pi^*) = (\pi^*)^{-1}(\pi^*(\Delta))$, which is exactly Δ . This action is effective, since the level set $\Psi^{-1}(0)$ contains points of the form $\underline{z} \in \mathbb{C}^d$, $z_j \neq 0$, $j = 1, \dots, d$, where the T^d -action is free. Notice finally that $\dim M = 2d - 2 \dim N = 2d - 2(d - 2) = 4 = 2 \dim D$. If we take Q to be an ordinary lattice, the space M is either a manifold or an orbifold, in accordance with the generalization of Delzant's construction to arbitrary simple rational polytopes by Lerman and Tolman [9].

Let us remark that this construction depends on two arbitrary choices: the choice of the quasilattice Q with respect to which the polytope is Q -rational and the choice of the inward-pointing vectors X_1, \dots, X_d in Q .

From now on, we fix the quasilattice Q that is generated by the vectors in the star \mathcal{S} defined by (2.2). It follows from Subsection 2.2 that the rhombuses of any tiling are Q -rational with respect to Q in our chosen coordinate system. The natural choices of inward-pointing vectors are given by $\pm Y_k, \pm Y_{k+1}$ for Δ_R^k and by $\pm Y_k, \pm Y_{k+2}$ for Δ_r^k .

Let us begin by performing the generalized Delzant construction for the thick rhombus Δ_R^2 and for the thin rhombus Δ_r^4 . We will show in Theorem 5.1 that all the other cases can be reduced to these two.

4.1. The thick rhombus. Let us consider the thick rhombus Δ_R^2 , and let us label its edges with the numbers 1, 2, 3, 4, as in Figure 10. The corresponding inward-pointing vectors are given by $X_1 = Y_2, X_2 = -Y_2, X_3 = Y_3, X_4 = -Y_3$, while $\lambda_1 = \lambda_4 = 0$ and $\lambda_2 = \lambda_3 = -\frac{1}{2}\sqrt{2 + \phi}$. Let us consider the linear mapping defined by

$$\begin{aligned} \pi : \mathbb{R}^4 &\longrightarrow \mathbb{R}^2 \\ e_i &\longmapsto X_i. \end{aligned}$$

Its kernel, \mathfrak{n} , is the 2-dimensional subspace of \mathbb{R}^4 that is spanned by $e_1 + e_2$ and $e_3 + e_4$. It is the Lie algebra of $N = \{ \exp(X) \in T^4 \mid X \in \mathbb{R}^4, \pi(X) \in Q \}$. If Ψ is the moment mapping of the induced N -action, then

$$\Psi(z_1, z_2, z_3, z_4) = \left(|z_1|^2 + |z_2|^2 - \frac{1}{2}\sqrt{2 + \phi}, |z_3|^2 + |z_4|^2 - \frac{1}{2}\sqrt{2 + \phi} \right).$$

It will be useful for the sequel to construct an atlas for the quasifold M_R . It is given by four charts, each of which corresponds to a vertex of the thick rhombus. Consider, for example, the origin, it is given by the intersection of the edges numbered 1 and 4. Let B_R the ball in \mathbb{C} of radius R , namely

$$B_R = \{z \in \mathbb{C} \mid |z| < R\}.$$

Consider the following mapping, which gives a slice of $\Psi^{-1}(0)$ transversal to the N -orbits

$$\begin{aligned} B_R \times B_R &\xrightarrow{\tilde{\tau}_{1,4}} \{\underline{z} \in \Psi^{-1}(0) \mid z_2 \neq 0, z_3 \neq 0\} \\ (z_1, z_4) &\longmapsto (z_1, \sqrt{R^2 - |z_1|^2}, \sqrt{R^2 - |z_4|^2}, z_4). \end{aligned}$$

This induces the homeomorphism

$$\begin{aligned} \frac{B_R \times B_R}{\Gamma_{1,4}} &\xrightarrow{\tau_{1,4}} U_{1,4} \\ [\underline{z}] &\longmapsto [\tilde{\tau}_{1,4}(\underline{z})], \end{aligned}$$

where the open subset $U_{1,4}$ of M_R is the quotient

$$\frac{\{\underline{z} \in \Psi^{-1}(0) \mid z_2 \neq 0, z_3 \neq 0\}}{N}$$

and the finitely generated group $\Gamma_{1,4}$ is given by

$$\Gamma_{1,4} = N \cap (S^1 \times \{1\} \times \{1\} \times S^1),$$

hence

$$\Gamma_{1,4} = \exp \{(\phi h, 0, 0, \phi k) \mid h, k \in \mathbb{Z}\}.$$

The triple $(U_{1,4}, \tau_{1,4}, (B_R \times B_R)/\Gamma_{1,4})$ is a chart of M_R . Analogously, we can construct three other charts, corresponding to the remaining vertices of the thick rhombus, each of which is characterized by a different pair of variables; the other three pairs are: $(1, 3), (2, 3), (2, 4)$. These four charts are compatible, they give therefore an atlas of M_R , thus defining on M_R a quasifold structure.

Now denote by V_n the open subset of S_R^2 given by S_R^2 minus the south pole and by V_s the open subset of S_R^2 given by S_R^2 minus the north pole, then, on $\Psi^{-1}(0)$, consider the action of $S^1 \times S^1$ given by (4.2). We obtain

$$V_n \times V_s = \frac{\{\underline{z} \in \Psi^{-1}(0) \mid z_2 \neq 0, z_3 \neq 0\}}{S^1 \times S^1}$$

and

$$U_{1,4} = \frac{V_n \times V_s}{\Gamma}.$$

$X_4 = -Y_4$, while $\lambda_1 = \lambda_4 = 0$ and $\lambda_2 = \lambda_3 = -\frac{1}{2\phi}\sqrt{2+\phi}$. Let us consider the linear mapping defined by

$$\begin{aligned} \sigma: \mathbb{R}^4 &\longrightarrow \mathbb{R}^2 \\ e_i &\longmapsto X_i. \end{aligned}$$

Its kernel, \mathfrak{l} , is the 2-dimensional subspace of \mathbb{R}^4 that is spanned by $e_1 + e_2$ and $e_3 + e_4$. It is the Lie algebra of $L = \{ \exp(X) \in T^4 \mid X \in \mathbb{R}^4, \sigma(X) \in Q \}$. If Ψ is the moment mapping of the induced L action, then

$$\Psi(z_1, z_2, z_3, z_4) = \left(|z_1|^2 + |z_2|^2 - \frac{1}{2\phi}\sqrt{2+\phi}, |z_3|^2 + |z_4|^2 - \frac{1}{2\phi}\sqrt{2+\phi} \right).$$

Let $r = \left(\frac{1}{2\phi}\sqrt{2+\phi}\right)^{1/2}$ and denote by S_r^3 and S_r^2 the spheres of radius r , centered at the origin, of dimension 3 and 2, respectively. Then $\Psi^{-1}(0) = S_r^3 \times S_r^3$. A straightforward computation, using the relations (2.5), with $k = 4$, gives that

$$L = \{ \exp(X) \in T^4 \mid X = (s, s + h\phi, t, t + k\phi), s, t \in \mathbb{R}, h, k \in \mathbb{Z} \} = N.$$

In conclusion,

$$M_r = \frac{\Psi^{-1}(0)}{N} = \frac{S_r^3 \times S_r^3}{N} = \frac{S_r^2 \times S_r^2}{\Gamma}$$

and the quasitorus

$$D^2 = \frac{\mathbb{R}^2}{Q}$$

acts on M_r in a Hamiltonian fashion, with image of the corresponding moment mapping yielding exactly Δ_r^2 . Notice that the quasitorus D^2 is the same for both the thick and thin rhombuses.

5. Symplectic interpretation of the tiling

Recall that we denoted by M_R the symplectic quasifold associated to the thick rhombus Δ_R^2 and by M_r the symplectic quasifold associated with the thin rhombus Δ_r^4 . Consider the five distinguished thick rhombuses Δ_R^k and the five distinguished thin rhombuses Δ_r^k , $k = 0, \dots, 4$. Recall that each of these rhombuses has a natural choice of inward-pointing vectors, these are $\pm Y_k, \pm Y_{k+1}$ for Δ_R^k , and $\pm Y_k, \pm Y_{k+2}$ for Δ_r^k . Consider now a Penrose tiling with edges of length 1. Remark that, by Proposition 2.3, in our choice of coordinates, each of its rhombuses can be obtained by translation from one of the 10 rhombuses Δ_R^k and Δ_r^k . We can then prove the following.

Theorem 5.1. *The compact symplectic quasifold corresponding to each thick rhombus of a Penrose tiling with edges of length 1 is given by M_R . The compact symplectic quasifold corresponding to each thin rhombus is given by M_r .*

Proof. Observe that, for each $k = 0, 1, 3, 4$, there exists a rotation P of \mathbb{R}^2 that leaves the quasilattice Q invariant, that sends the orthogonal vectors relative to the rhombus Δ_R^k to the orthogonal vectors relative to the rhombus Δ_R^2 , and such that the dual transformation P^* sends the rhombus Δ_R^2 to the rhombus Δ_R^k . This implies that the reduced space corresponding to each of the five rhombuses Δ_R^k , $k = 0, \dots, 4$, with the choice of orthogonal vectors and quasilattice specified above, is exactly M_R . This yields a unique symplectic quasifold, M_R , for all the rhombuses considered. We argue in the same way for each thin rhombus Δ_r^k , $k = 0, \dots, 4$. Finally, translating the rhombuses Δ_R^k does not produce any change in the corresponding quotient spaces, therefore, by Proposition 2.3 we are done. \square

Theorem 5.2. *The quasifolds M_R and M_r are diffeomorphic but not symplectomorphic.*

Proof. We recall from [14] that a quasifold diffeomorphism, f , is a bijective mapping, such that, for each point $p \in M_R$, there is a local model W around p and a local model $f(W)$ around $f(p)$, such that the mapping f , restricted to W , is a diffeomorphism of models as given by Definition 3.4. A local model is a submodel of a chart of the atlas that defines the quasifold structure. It is straightforward to check that, since the manifolds $S_R^2 \times S_R^2$ and $S_r^2 \times S_r^2$ are diffeomorphic, the quasifolds $M_R = (S_R^2 \times S_R^2)/\Gamma$ and $M_r = (S_r^2 \times S_r^2)/\Gamma$ are diffeomorphic.

We prove now that M_R and M_r are not symplectomorphic. Denote by ω_R and ω_r the symplectic forms of M_R and M_r respectively. Suppose that there is a symplectomorphism $h : M_R \rightarrow M_r$, namely a diffeomorphism h such that $h^*(\omega_r) = \omega_R$. The quasifold structures on M_R and M_r are each defined by four charts, one corresponding to each vertex of the rhombus, as shown in Subsection 4.1. We recall from Remark 3.9 that to each point $p \in M_R$ one can associate finitely generated groups Γ_p and $\Lambda_{h(p)}$. It is easy to check, using Lemma 3.6, that the fact that h is a diffeomorphism implies that these two groups are isomorphic. It follows from this that h defines a one-to-one correspondence between the above-given charts of M_R and M_r , and that it sends each of the charts of M_R diffeomorphically onto the corresponding chart of M_r .

Consider now the restriction of h to one such chart of M_R , say $U_{1,4}$, we want to prove that we can construct a diffeomorphism \bar{h} from $B_R \times B_R$ to $B_r \times B_r$ that lifts the restriction of h to the given chart. Notice that all submodels of $U_{1,4}$ are of the type $\tilde{W}/\Gamma_{1,4}$, where \tilde{W} is an open subset of $B_R \times B_R$, which, since it is $\Gamma_{1,4}$ -invariant, can either be the product of two open disks, or the product of an open disk by an open annulus or the product of two open annuli. Therefore, a local model around the point $[\tau_{1,4}(0, 0)]$ is given by $\tilde{W}_0 = B_\delta \times B_\delta$ for a suitable $\delta < R$, modulo the action of $\Gamma_{1,4}$. Since \tilde{W}_0 is simply connected here a lift of h is well defined. Moreover, it

follows from the fact that ϕ is irrational that when a lift is well defined on one point of a local model \tilde{W} , where the action of $\Gamma_{1,4}$ is free, then it is well defined on all of \tilde{W} , without the need of taking a covering of $\tilde{W}/\Gamma_{1,4}$. Finally, observe that if two submodels \tilde{W}_1 and \tilde{W}_2 overlap, and there is a lift of h defined on each of them, then by Lemma 3.5, there is a unique lift defined on $\tilde{W}_1 \cup \tilde{W}_2$. Now the lift \tilde{h} from $B_R \times B_R$ to $B_r \times B_r$ can be constructed by gluing the local lifts of h that are defined on suitable submodels of $U_{1,4}$.

Observe now that the four charts of M_R intersect in the 4-dimensional dense open subset where the action of the quasitorus D^2 is free; then Lemma 3.5 together with diagram (4.3) allow us to lift the diffeomorphism h to a global diffeomorphism \tilde{h} from $S_R^2 \times S_R^2$ to $S_r^2 \times S_r^2$ that is equivariant with respect to the actions of Γ and Λ , respectively. Moreover, since diagram (4.3) preserves the symplectic structures, we have that \tilde{h} is a symplectomorphism between $S_R^2 \times S_R^2$ and $S_r^2 \times S_r^2$, which is impossible. \square

In conclusion, there is a *unique* quasifold structure that is naturally associated to the Penrose rhombus tiling, and two distinct symplectic structures that distinguish the thick and the thin rhombuses.

References

- [1] M. Atiyah, *Convexity and commuting Hamiltonians*, Bull. London Math. Soc. **14** (1982), 1–15.
- [2] D. Austin, *Penrose tiles talk across miles*, <http://www.ams.org/featurecolumn/archive/penrose.html> (accessed November 11, 2007).
- [3] ———, *Penrose tilings tied up in ribbons*, <http://www.ams.org/featurecolumn/archive/ribbons.html> (accessed November 11, 2007).
- [4] F. Battaglia and E. Prato, *The symplectic Penrose kite*, preprint, 2007, arXiv:0712.1978v1 (math.SG).
- [5] ———, *Nonperiodic rhombohedral tilings in symplectic geometry*, in preparation.
- [6] T. Delzant, *Hamiltoniennes périodiques et image convexe de l'application moment*, Bull. S.M.F. **116** (1988), 315–339.
- [7] B. Grünbaum and G.C. Shephard, *Tilings and patterns*, Freeman, New York, 1987.
- [8] V. Guillemin and S. Sternberg, *Convexity properties of the moment mapping*, Invent. Math. **67** (1982), 491–513.
- [9] E. Lerman and S. Tolman, *Hamiltonian torus actions on symplectic orbifolds and toric varieties*, Trans. Amer. Math. Soc. **349** (1997), 4201–4230.
- [10] M. Livio, *The golden ratio: The story of Phi, the world's most astonishing number*, Broadway Books, New York, 2003.
- [11] R. Penrose, *The rôle of Aesthetics in pure and applied mathematical research*, Bull. Inst. Math. Appl. **10** (1974), 266–271.

- [12] ———, *Tilings and quasicrystals: A nonlocal growth problem?*, in ‘Introduction to the mathematics of quasicrystals’ (Marko Jaric, ed.), Academic Press, Boston, 1989, 53–80.
- [13] ———, *The emperor’s new mind*, Oxford University Press, Oxford, 1989.
- [14] E. Prato, *Simple non-rational convex polytopes via symplectic geometry*, *Topology* **40** (2001), 961–975.
- [15] ———, *The pentagram: From the goddess to symplectic geometry*, *Proc. Bridges* **2007** (2007), 123–126.
- [16] M. Senechal, *Quasicrystals and geometry*, Cambridge University Press, Cambridge, 1995.
- [17] D. Shechtman, I. Blech, D. Gratias and J.W. Cahn, *Metallic phase with long-range orientational order and no translational symmetry*, *Phys. Rev. Lett.* **53** (1984), 1951–1953.

DIPARTIMENTO DI MATEMATICA APPLICATA “G. SANSONE”
UNIVERSITÀ DI FIRENZE
VIA S. MARTA 3
50139 FIRENZE, ITALY
E-mail address: fiammetta.battaglia@unifi.it

DIPARTIMENTO DI MATEMATICA E APPLICAZIONI PER L’ARCHITETTURA
UNIVERSITÀ DI FIRENZE
PIAZZA Ghiberti 27
50122 FIRENZE, ITALY
E-mail address: elisa.prato@unifi.it

Received 11/13/2007, accepted 04/01/2008