

Probabilistic Integration: A Role in Statistical Computation?¹

François-Xavier Briol, Chris J. Oates, Mark Girolami, Michael A. Osborne and Dino Sejdinovic

Abstract. A research frontier has emerged in scientific computation, wherein discretisation error is regarded as a source of epistemic uncertainty that can be modelled. This raises several statistical challenges, including the design of statistical methods that enable the coherent propagation of probabilities through a (possibly deterministic) computational work-flow, in order to assess the impact of discretisation error on the computer output. This paper examines the case for probabilistic numerical methods in routine statistical computation. Our focus is on numerical integration, where a *probabilistic integrator* is equipped with a full distribution over its output that reflects the fact that the integrand has been discretised. Our main technical contribution is to establish, for the first time, rates of posterior contraction for one such method. Several substantial applications are provided for illustration and critical evaluation, including examples from statistical modelling, computer graphics and a computer model for an oil reservoir.

Key words and phrases: Computational statistics, nonparametric statistics, probabilistic numerics, uncertainty quantification.

1. INTRODUCTION

This paper presents a statistical perspective on the theoretical and methodological issues pertinent to probabilistic numerical methods. Our aim is to stimulate what we feel is an important discussion about

François-Xavier Briol is Research Associate, Department of Mathematics, Imperial College London, London, SW7 2AZ, UK (e-mail: f.briol16@imperial.ac.uk). Chris J. Oates is Chair in Statistics, School of Mathematics, Statistics and Physics, Newcastle University, Newcastle upon Tyne, NE1 7RU, UK (e-mail: chris.oates@ncl.ac.uk). Mark Girolami is Chair in Statistics, Department of Mathematics, Imperial College London, London, SW7 2AZ, UK (e-mail: m.girolami@imperial.ac.uk). Michael A. Osborne is Dyson Associate Professor in Machine Learning, Department of Engineering Science, University of Oxford, Oxford, OX1 3PJ, UK (e-mail: mosb@robots.ox.ac.uk). Dino Sejdinovic is Associate Professor in Statistics, Department of Statistics, University of Oxford, Oxford, OX1 3LB, UK (e-mail: dino.sejdinovic@stats.ox.ac.uk).

¹Discussed in 10.1214/18-STS685; 10.1214/18-STS676; 10.1214/18-STS677; rejoinder at 10.1214/18-STS683.

these methods for use in contemporary and emerging scientific and statistical applications.

1.1 Background

Numerical methods, for tasks such as approximating the solution of a linear system, integration, global optimisation and discretisation schemes to approximate the solution of differential equations, are core building blocks in modern scientific and statistical computation. These are typically considered as computational black-boxes that return a point estimate for a deterministic quantity of interest whose numerical error is then neglected. Numerical methods are thus one part of statistical analysis for which uncertainty is not routinely accounted (although analysis of errors and bounds on these are often available and highly developed). In many situations, numerical error will be negligible and no further action is required. However, if numerical errors are propagated through a computational pipeline and allowed to accumulate, then failure to properly account for such errors could potentially have drastic consequences on subsequent statistical inferences (Mosbach and Turner, 2009, Oates, Cockayne and Aykroyd, 2017).

The study of numerical algorithms from a statistical point of view, where uncertainty is formally due to discretisation, is known as *probabilistic numerics*. The philosophical foundations of probabilistic numerics were, to the best of our knowledge, first clearly exposed in the work of Larkin (1972), Kadane (1985), Diaconis (1988) and O’Hagan (1992). Theoretical support comes from the field of information-based complexity (Traub, Wasilkowski and Woźniakowski, 1988), where continuous mathematical operations are approximated by discrete and finite operations to achieve a prescribed accuracy level. Proponents claim that this approach provides three important benefits: First, it provides a principled approach to quantify and propagate numerical uncertainty through computation, allowing for the possibility of errors with complex statistical structure. Second, it enables the user to uncover key contributors to numerical error, using established statistical techniques such as analysis of variance, in order to better target computational resources. Third, this dual perspective on numerical analysis as an inference task enables new insights, as well as the potential to critique and refine existing numerical methods. On this final point, recent interest has led to several new and effective numerical algorithms in many areas, including differential equations, linear algebra and optimisation. For an extensive bibliography, the reader is referred to the recent expositions of Hennig, Osborne and Girolami (2015) and Briol et al. (2016a).

1.2 Contributions

Our aim is to stimulate a discussion on the suitability of probabilistic numerical methods in statistical computation. A decision was made to focus on numerical integration due to its central role in computational statistics, including frequentist approaches such as bootstrap estimators (Efron and Tibshirani, 1993) and Bayesian approaches, such as computing marginal distributions (Robert and Casella, 1999). In particular, we focus on numerical integrals where the cost of evaluating the integrand forms a computational bottleneck, and for which numerical error is hence more likely to be non-negligible. To this end, let π be a distribution on a state space \mathcal{X} . The task is to compute (or, rather, to *estimate*) integrals of the form

$$\Pi[f] := \int f \, d\pi,$$

where the integrand $f : \mathcal{X} \rightarrow \mathbb{R}$ is a function of interest. Our motivation comes from settings where f does not possess a convenient closed form so that, until the function is actually evaluated at an input \mathbf{x} , there

is epistemic uncertainty over the actual value attained by f at \mathbf{x} . The use of a probabilistic model for this epistemic uncertainty has been advocated as far back as Larkin (1972).

The probabilistic integration method that we focus on is known as Bayesian quadrature or *Bayesian cubature* (BC). The method operates by evaluating the integrand at a set of states $\{\mathbf{x}_i\}_{i=1}^n \subset \mathcal{X}$, so-called *discretisation*, and returns a distribution over \mathbb{R} that expresses belief about the actual value of $\Pi[f]$. The computational cost associated with BC is in general $O(n^3)$. As the name suggests, this distribution will be based on a prior that captures certain properties of the integrand f , and that is updated, via Bayes’ rule, on the basis of evaluations of f . The *maximum a posteriori* (MAP) value acts as a point estimate of the integral, while the rest of the distribution captures uncertainty due to the fact that we can only evaluate the integrand at a finite number of inputs. The role of epistemic uncertainty in error assessment should be contrasted to more classical approaches based on unbiased estimation, such as used in a Monte Carlo (MC) method.

A theoretical investigation of the posterior² in BC is, to the best of our knowledge, non-existent. Our first contribution is therefore to investigate the claim that the BC posterior provides a coherent and honest assessment of the uncertainty due to discretisation of the integrand. This claim is shown to be substantiated as a consequence of existing results on deterministic interpolation and integration methods in reproducing kernel Hilbert spaces, *if* the prior is well specified. In particular, rates of posterior contraction to a point mass centred on the true value $\Pi[f]$ are established. However, to check that a prior is well specified for a given integration problem can be non-trivial.

Our second contribution is to explore the potential for the use of probabilistic integrators in the contemporary statistical context. In doing so, we have developed strategies for (i) model evidence evaluation via thermodynamic integration, where a large number of candidate models are to be compared, (ii) inverse problems arising in partial differential equation models for oil reservoirs, (iii) logistic regression models involving high-dimensional latent random effects, and (iv) spherical integration, as used in the rendering of virtual objects in prescribed visual environments. In each case, the relative advantages and disadvantages of the probabilistic approach to integration are presented for critical assessment.

²In contrast to the MAP estimator, which has been well studied.

1.3 Outline

The paper is structured as follows. Section 2 provides background on BC and outlines an analytic framework in which the method can be studied. Section 3 describes our novel theoretical results. Section 4 is devoted to a discussion of practical issues, including the important issue of prior elicitation. Section 5 presents several novel applications of probabilistic integration for critical assessment. Section 6 concludes with an appraisal of the suitability of probabilistic numerical methods in the applied statistical context.

2. BACKGROUND

First, we provide the reader with the relevant background. Section 2.1 provides a formal description of BC. Sections 2.2 and 2.3 explain how the analysis of BC is dual to minimax analysis in nonparametric regression, and Section 2.4 relates these ideas to established sampling methods.

Set-Up: Let $(\mathcal{X}, \mathcal{B})$ be a measurable space, where \mathcal{X} will either be a subset of \mathbb{R}^d or a more general manifold (e.g. the sphere \mathbb{S}^d), in each case equipped with the Borel σ -algebra $\mathcal{B} = \mathcal{B}(\mathcal{X})$. Let π be a probability measure on $(\mathcal{X}, \mathcal{B})$. Our integrand is assumed to be an integrable function $f : \mathcal{X} \rightarrow \mathbb{R}$ whose integral, $\Pi[f] = \int f d\pi$, is the object of interest.

Notation: For functional arguments write $\langle f, g \rangle_2 = \int fg d\pi$, $\|f\|_2 = \langle f, f \rangle_2^{1/2}$ and for vector arguments denote $\|\mathbf{u}\|_2 = (u_1^2 + \dots + u_d^2)^{1/2}$. For vector-valued functions $\mathbf{v} : \mathcal{X} \rightarrow \mathbb{R}^m$ we write $\Pi[\mathbf{v}]$ for the $m \times 1$ vector whose i th element is $\Pi[v_i]$. The notation $[u]_+ = \max\{0, u\}$ will be used. The relation $a_l \asymp b_l$ is taken to mean that there exist $0 < C_1, C_2 < \infty$ such that $C_1 a_l \leq b_l \leq C_2 a_l$.

A *cubature rule* describes any functional $\hat{\Pi}$ of the form

$$(1) \quad \hat{\Pi}[f] = \sum_{i=1}^n w_i f(\mathbf{x}_i),$$

for some states $\{\mathbf{x}_i\}_{i=1}^n \subset \mathcal{X}$ and weights $\{w_i\}_{i=1}^n \subset \mathbb{R}$. The term *quadrature rule* is sometimes preferred when the domain of integration is one-dimensional (i.e., $d = 1$). The notation $\hat{\Pi}[f]$ is motivated by the fact that this expression can be re-written as the integral of f with respect to an empirical measure $\hat{\pi} = \sum_{i=1}^n w_i \delta_{\mathbf{x}_i}$, where $\delta_{\mathbf{x}_i}$ is a Dirac measure (i.e., for all $A \in \mathcal{B}$, $\delta_{\mathbf{x}_i}(A) = 1$ if $\mathbf{x}_i \in A$, $\delta_{\mathbf{x}_i}(A) = 0$ if $\mathbf{x}_i \notin A$). The weights w_i can be negative and need not satisfy $\sum_{i=1}^n w_i = 1$.

2.1 Bayesian Cubature

Probabilistic integration begins by defining a probability space $(\Omega, \mathcal{F}, \mathbb{P})$ and an associated stochastic process $g : \mathcal{X} \times \Omega \rightarrow \mathbb{R}$, such that for each $\omega \in \Omega$, $g(\cdot, \omega)$ belongs to a linear topological space \mathcal{L} . For BC, Larkin (1972) considered a Gaussian process (GP); this is a stochastic process such that the random variables $\omega \mapsto \text{Lg}(\cdot, \omega)$ are Gaussian for all $L \in \mathcal{L}^*$, where \mathcal{L}^* is the topological dual of \mathcal{L} (Bogachev, 1998). In this paper, to avoid technical obfuscation, it is assumed that \mathcal{L} contains only continuous functions. Let \mathbb{E}_ω denote expectation taken over $\omega \sim \mathbb{P}$. A GP can be characterised by its mean function $m(\mathbf{x}) = \mathbb{E}_\omega[g(\mathbf{x}, \omega)]$, and its covariance function $c(\mathbf{x}, \mathbf{x}') = \mathbb{E}_\omega[(g(\mathbf{x}, \omega) - m(\mathbf{x}))(g(\mathbf{x}', \omega) - m(\mathbf{x}'))]$ and we write $g \sim \mathcal{N}(m, c)$. In this paper, we assume without loss of generality that $m \equiv 0$. Note that other priors could also be used (e.g., a Student- t process affords heavier tails for values assumed by the integrand).

The next step is to consider the stochastic process $g_n : \mathcal{X} \times \Omega \rightarrow \mathbb{R}$, conditioned on the data $f(\mathbf{x}_i)$ for $1 \leq i \leq n$. The fact that \mathcal{L} contains only continuous functions ensures that $g_n(\mathbf{x}_i, \omega)$ is well defined.³ Moreover, the restriction to a \mathbb{P} -null set is also well defined.⁴ Then, for BC, g_n can be shown to be a GP, denoted $\mathcal{N}(m_n, c_n)$ (see Chapter 2 of Rasmussen and Williams, 2006).

The final step is to produce a distribution on \mathbb{R} by considering the pushforward of g_n through the integration operator. A sketch of the procedure is presented in Figure 1 and the relevant formulae are now provided. This paper aims to understand if and when this distributional output (bottom row) converges to a Dirac centred on $\Pi[f]$, the true value of the integral.

Write $\mathbf{f} \in \mathbb{R}^n$ for the vector of $f_i = f(\mathbf{x}_i)$ values, $X = \{\mathbf{x}_i\}_{i=1}^n$ and $\mathbf{c}(\mathbf{x}, X) = \mathbf{c}(X, \mathbf{x})^\top$ for the $1 \times n$ vector whose i th entry is $c(\mathbf{x}, \mathbf{x}_i)$ and \mathbf{C} for the matrix with entries $C_{i,j} = c(\mathbf{x}_i, \mathbf{x}_j)$.

PROPOSITION 1. The induced distribution of $\Pi[g_n]$ is Gaussian with mean and variance

$$(2) \quad \mathbb{E}[\Pi[g_n]] = \Pi[\mathbf{c}(\cdot, X)]\mathbf{C}^{-1}\mathbf{f},$$

$$(3) \quad \mathbb{V}[\Pi[g_n]] = \Pi\Pi[\mathbf{c}(\cdot, \cdot)] - \Pi[\mathbf{c}(\cdot, X)]\mathbf{C}^{-1}\Pi[\mathbf{c}(X, \cdot)].$$

³This would not have been the case if instead $\mathcal{L} = L^2(\pi)$.

⁴Since the canonical space of continuous processes is a Polish space and all Polish spaces are Borel spaces and thus admit regular conditional laws (cf. Theorem A1.2 and Theorem 6.3 of Kallenberg, 2002).

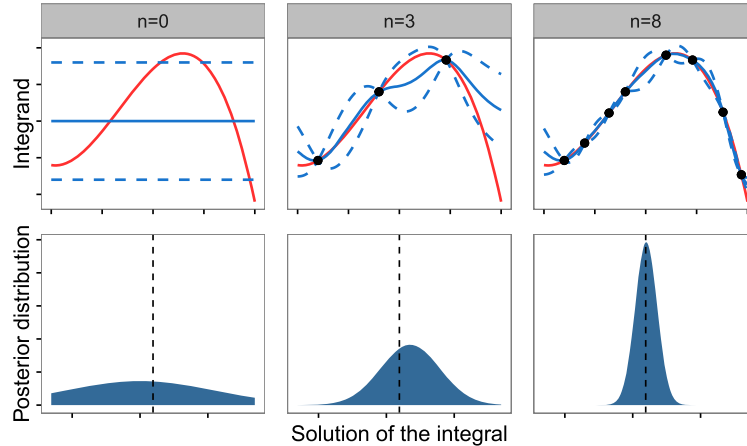


FIG. 1. Sketch of Bayesian cubature. The top row shows the approximation of the integrand f (red) by the posterior mean m_n (blue) as the number n of function evaluations is increased. The dashed lines represent point-wise 95% posterior credible intervals. The bottom row shows the Gaussian distribution with mean $\mathbb{E}[\Pi[g_n]]$ and variance $\mathbb{V}[\Pi[g_n]]$ and the dashed black line gives the true value of the integral $\Pi[f]$. As the number of states n increased, this posterior distribution contracts onto the true value of the integral $\Pi[f]$.

Here, $\Pi\Pi[c(\cdot, \cdot)]$ denotes the integral of c with respect to each argument. All proofs in this paper are reserved for Supplement A (Briol et al., 2019). It can be seen that the computational cost of obtaining this full posterior is much higher than that of obtaining a point estimate for the integral, at $O(n^3)$. However, certain combinations of point sets and covariance functions can reduce this cost by several orders of magnitude (see, e.g., Karvonen and Särkkä, 2018).

BC formally associates the stochastic process g with a prior model for the integrand f . This in turn provides a probabilistic model for epistemic uncertainty over the value of the integral $\Pi[f]$. Without loss of generality, we assume $m \equiv 0$ for the remainder of the paper. Then Eq. (2) takes the form of a cubature rule

$$(4) \quad \mathbb{E}[\Pi[g_n]] = \hat{\Pi}_{\text{BC}}[f] := \sum_{i=1}^n w_i^{\text{BC}} f(\mathbf{x}_i)$$

where $\mathbf{w}^{\text{BC}} := \mathbf{C}^{-1}\Pi[c(X, \cdot)]$. Furthermore, Eq. (4) does not depend on function values $\{f_i\}_{i=1}^n$, but only on the location of the states $\{\mathbf{x}_i\}_{i=1}^n$ and the choice of covariance function c . This is useful as it allows state locations and weights to be pre-computed and reused. However, it also means that the variance is endogenous, being driven by the choice of prior. A valid quantification of uncertainty thus relies on a well-specified prior; we consider this issue further in Section 4.1.

The BC mean (Eq. (4)) coincides with classical cubature rules for specific choices of covariance function c . For example, in one dimension a Brownian covariance function $c(x, x') = \min(x, x')$ leads to a

posterior mean m_n that is a piecewise linear interpolant of f between the states $\{\mathbf{x}_i\}_{i=1}^n$, that is, the trapezium rule (Suldin, 1959). Similarly, Särkkä et al. (2016) constructed a covariance function c for which Gauss–Hermite cubature is recovered, and Karvonen and Särkkä (2017) showed how other polynomial-based quadrature or cubature rules can be recovered. Clearly the point estimator in Eq. (4) is a natural object; it has also received attention in both the *kernel quadrature* literature (Sommariva and Vianello, 2006) and *empirical interpolation* literature (Kristoffersen, 2013). Recent work with a computational focus includes Kennedy (1998), Minka (2000), Rasmussen and Ghahramani (2002), Huszar and Duvenaud (2012), Gunter et al. (2014), Briol et al. (2015), Karvonen and Särkkä (2018), Oettershagen (2017). The present paper focuses on the full posterior, as opposed to just the point estimator that these papers studied. In particular, we seek to address when the posterior contracts onto a Dirac centred on the true integral $\Pi[f]$ in the large n limit.

2.2 Cubature Rules in Hilbert Spaces

Next, we review how analysis of the approximation properties of the cubature rule $\hat{\Pi}_{\text{BC}}[f]$ can be carried out in terms of reproducing kernel Hilbert spaces (RKHS; Berlinet and Thomas-Agnan, 2004).

Consider a Hilbert space \mathcal{H} with inner product $\langle \cdot, \cdot \rangle_{\mathcal{H}}$ and associated norm $\|\cdot\|_{\mathcal{H}}$. \mathcal{H} is said to be an RKHS if there exists a symmetric, positive definite function $k : \mathcal{X} \times \mathcal{X} \rightarrow \mathbb{R}$, called a *kernel*, that satisfies two properties: (i) $k(\cdot, \mathbf{x}) \in \mathcal{H}$ for all $\mathbf{x} \in \mathcal{X}$ and; (ii) $f(\mathbf{x}) =$

$\langle f, k(\cdot, \mathbf{x}) \rangle_{\mathcal{H}}$ for all $\mathbf{x} \in \mathcal{X}$ and $f \in \mathcal{H}$ (the *reproducing* property). It can be shown that every kernel defines a RKHS and every RKHS admits a unique reproducing kernel (Berlinet and Thomas-Agnan, 2004, Section 1.3). In this paper, all kernels k are assumed to satisfy $R := \int k(\mathbf{x}, \mathbf{x}) d\pi(\mathbf{x}) < \infty$. In particular this guarantees $\int f^2 d\pi < \infty$ for all $f \in \mathcal{H}$. Define the *kernel mean* $\mu(\pi) : \mathcal{X} \rightarrow \mathbb{R}$ as $\mu(\pi)(\mathbf{x}) := \Pi[k(\cdot, \mathbf{x})]$. This exists in \mathcal{H} as a consequence of $R < \infty$ (Smola et al., 2007). The name is justified by the fact⁵ that $\forall f \in \mathcal{H}$:

$$\begin{aligned} \Pi[f] &= \int f d\pi \\ &= \int \langle f, k(\cdot, \mathbf{x}) \rangle_{\mathcal{H}} d\pi(\mathbf{x}) \\ &= \left\langle f, \int k(\cdot, \mathbf{x}) d\pi(\mathbf{x}) \right\rangle_{\mathcal{H}} \\ &= \langle f, \mu(\pi) \rangle_{\mathcal{H}}. \end{aligned}$$

The reproducing property permits an elegant theoretical analysis, with many quantities of interest tractable in \mathcal{H} . In the language of kernel means, cubature rules of the form in Eq. (1) can be written as $\hat{\Pi}[f] = \langle f, \mu(\hat{\pi}) \rangle_{\mathcal{H}}$ where $\mu(\hat{\pi})$ is the approximation to the kernel mean given by $\mu(\hat{\pi})(\mathbf{x}) = \hat{\Pi}[k(\cdot, \mathbf{x})]$. For fixed $f \in \mathcal{H}$, the integration error associated with $\hat{\Pi}$ can then be expressed as

$$\begin{aligned} \hat{\Pi}[f] - \Pi[f] &= \langle f, \mu(\hat{\pi}) \rangle_{\mathcal{H}} - \langle f, \mu(\pi) \rangle_{\mathcal{H}} \\ &= \langle f, \mu(\hat{\pi}) - \mu(\pi) \rangle_{\mathcal{H}}. \end{aligned}$$

A tight upper bound for the error is obtained by Cauchy–Schwarz:

$$(5) \quad |\hat{\Pi}[f] - \Pi[f]| \leq \|f\|_{\mathcal{H}} \|\mu(\hat{\pi}) - \mu(\pi)\|_{\mathcal{H}}.$$

The expression above⁶ decouples the magnitude (in \mathcal{H}) of the integrand f from the kernel mean approximation error. The following sections discuss how cubature rules can be tailored to target the second term in this upper bound.

2.3 Optimality of Cubature Weights

Denote the dual space of \mathcal{H} as \mathcal{H}^* and denote its corresponding norm $\|\cdot\|_{\mathcal{H}^*}$. The performance of a cubature rule can be quantified by its *worst-case error*

⁵The integral and inner product commute due to the existence of $\mu(\pi)$ as a Bochner integral (Steinwart and Christmann, 2008, p. 510).

⁶Sometimes called the Koksma–Hlawka inequality (Hickernell, 1998).

(WCE) in the RKHS:

$$\|\hat{\Pi} - \Pi\|_{\mathcal{H}^*} = \sup_{\|f\|_{\mathcal{H}} \leq 1} |\hat{\Pi}[f] - \Pi[f]|.$$

The WCE is characterised as the error in estimating the kernel mean:

$$\text{FACT 1.} \quad \|\hat{\Pi} - \Pi\|_{\mathcal{H}^*} = \|\mu(\hat{\pi}) - \mu(\pi)\|_{\mathcal{H}}.$$

Minimisation of the WCE is natural and corresponds to solving a least-squares problem in the feature space induced by the kernel: Let $\mathbf{w} \in \mathbb{R}^n$ denote the vector of weights $\{w_i\}_{i=1}^n$, $\mathbf{z} \in \mathbb{R}^n$ be a vector such that $z_i = \mu(\pi)(\mathbf{x}_i)$, and $\mathbf{K} \in \mathbb{R}^{n \times n}$ be the matrix with entries $K_{i,j} = k(\mathbf{x}_i, \mathbf{x}_j)$. Then we obtain the following:

$$\text{FACT 2.} \quad \|\hat{\Pi} - \Pi\|_{\mathcal{H}^*}^2 = \mathbf{w}^\top \mathbf{K} \mathbf{w} - 2\mathbf{w}^\top \mathbf{z} + \Pi[\mu(\pi)].$$

Several optimality properties for integration in RKHS were collated in Section 4.2 of Novak and Woźniakowski (2008). Relevant to this work is that an optimal estimate $\hat{\Pi}$ can, without loss of generality, take the form of a cubature rule (i.e., of the form $\hat{\Pi}$ in Eq. (1)). To be more precise, any non-linear and/or adaptive estimator can be matched⁷ in terms of asymptotic WCE by a cubature rule as we have defined.

To relate these ideas to BC, consider the challenge of deriving an optimal cubature rule, conditional on fixed states $\{\mathbf{x}_i\}_{i=1}^n$, that minimises the WCE (in the RKHS \mathcal{H}_k) over weights $\mathbf{w} \in \mathbb{R}^n$. From Fact 2, the solution to this convex problem is $\mathbf{w} = \mathbf{K}^{-1} \mathbf{z}$. This shows that *if* the reproducing kernel k is equal to the covariance function c of the GP, then the MAP from BC is identical to the *optimal* cubature rule in the RKHS (Kadane and Wasilkowski, 1985). Furthermore, with $k = c$, the expression for the WCE in Fact 2 shows that $\mathbb{V}[\Pi[g_n]] = \|\hat{\Pi}_{\text{BC}} - \Pi\|_{\mathcal{H}^*}^2 \leq \|\hat{\Pi} - \Pi\|_{\mathcal{H}^*}^2$ where $\hat{\Pi}$ is any other cubature rule $\hat{\Pi}$ based on the same states $\{\mathbf{x}_i\}_{i=1}^n$. Regarding optimality, the problem is thus reduced to selection of states $\{\mathbf{x}_i\}_{i=1}^n$.

2.4 Selection of States

In earlier work, O’Hagan (1991) considered states $\{\mathbf{x}_i\}_{i=1}^n$ that are employed in Gaussian quadrature methods. Rasmussen and Ghahramani (2002) generated states using Monte Carlo (MC), calling the approach *Bayesian* Monte Carlo (BMC). Recent work by Gunter et al. (2014), Briol et al. (2015) selected states using experimental design to target the variance $\mathbb{V}[\Pi[g_n]]$. These approaches are now briefly recalled.

⁷Of course, adaptive cubature may provide superior performance for a *single* fixed function f , and the minimax result is not true in general outside the RKHS framework.

2.4.1 Monte Carlo methods. A MC method is a cubature rule based on uniform weights $w_i^{\text{MC}} := 1/n$ and random states $\{\mathbf{x}_i\}_{i=1}^n$. The simplest of those methods consists of sampling states $\{\mathbf{x}_i^{\text{MC}}\}_{i=1}^n$ independently from π . For un-normalised densities, Markov chain Monte Carlo (MCMC) methods proceed similarly but induce a dependence structure among the $\{\mathbf{x}_i^{\text{MCMC}}\}_{i=1}^n$. We denote these (random) estimators by $\hat{\Pi}_{\text{MC}}$ (when $\mathbf{x}_i = \mathbf{x}_i^{\text{MC}}$) and $\hat{\Pi}_{\text{MCMC}}$ (when $\mathbf{x}_i = \mathbf{x}_i^{\text{MCMC}}$). Uniformly weighted estimators are well suited to many challenging integration problems since they provide a dimension-independent convergence rate for the WCE of $O_P(n^{-1/2})$. They are widely applicable and straightforward to analyse; for instance the central limit theorem (CLT) gives that $\sqrt{n}(\hat{\Pi}_{\text{MC}}[f] - \Pi[f]) \rightarrow \mathcal{N}(0, \tau_f^{-1})$ where $\tau_f^{-1} = \Pi[f^2] - \Pi[f]^2$ and the convergence is in distribution. However, the CLT may not be well suited as a measure of *epistemic* uncertainty (i.e., as an explicit model for numerical error) since (i) it is only valid asymptotically, and (ii) τ_f is unknown, depending on the integral $\Pi[f]$ being estimated.

Quasi Monte Carlo (QMC) methods exploit knowledge of the RKHS \mathcal{H} to spread the states in an efficient, deterministic way over the domain \mathcal{X} (Hickernell, 1998). QMC also approximates integrals using a cubature rule $\hat{\Pi}_{\text{QMC}}[f]$ that has uniform weights $w_i^{\text{QMC}} := 1/n$. The (in some cases) optimal convergence rates, as well as sound statistical properties, of QMC have recently led to interest within statistics (e.g. Gerber and Chopin, 2015, Buchholz and Chopin, 2017). A related method with non-uniform weights was explored in Stein (1995a, 1995b).

2.4.2 Experimental design methods. An *Optimal Bayesian Cubature* (OBC) rule selects states $\{\mathbf{x}_i\}_{i=1}^n$ to globally minimise the variance $\mathbb{V}[\Pi[g_n]]$. OBC corresponds to classical cubature rules (e.g., Gauss–Hermite) for specific choices of kernels (Karvonen and Särkkä, 2018). However, OBC cannot in general be implemented; the problem of optimising states is in general NP-hard (Schölkopf and Smola, 2002, Section 10.2.3).

A more pragmatic approach to select states is to use experimental design methods, such as the greedy algorithm that sequentially minimises $\mathbb{V}[\Pi[g_n]]$. This method, called *sequential Bayesian Cubature* (SBC) or sequential Bayesian quadrature, is straightforward to implement, for example, using general-purpose numerical optimisation, and is a probabilistic integration method that is often used (Osborne et al., 2012, Gunter et al., 2014). More sophisticated optimisation

algorithms have also been used: For example, in the empirical interpolation literature, Eftang and Stamm (2012) proposed adaptive procedures to iteratively divide the domain of integration into sub-domains. In the BC literature, Briol et al. (2015) used conditional gradient algorithms for this task. A similar approach was recently considered in Oettershagen (2017).

At present, experimental design schemes do not possess the computational efficiency that we have come to expect from MCMC and QMC. Moreover, they do not scale well to high-dimensional settings due to the need to repeatedly solve high-dimensional optimisation problems and have few established theoretical guarantees. For these reasons, we will focus next on MC, MCMC and QMC.

3. METHODS

This section presents novel theoretical results on probabilistic integration methods in which the states $\{\mathbf{x}_i\}_{i=1}^n$ are generated with MCMC and QMC. Section 3.1 provides formal definitions, while Section 3.2 establishes theoretical results.

3.1 Probabilistic Integration

The sampling methods of MC, MCMC and, to a lesser extent, QMC are widely used in statistical computation. Here we pursue the idea of using MC, MCMC and QMC to generate states for BC, with the aim to exploit BC to account for the possible impact of numerical integration error on inferences made in statistical applications. In MCMC, it is possible that two states $\mathbf{x}_i = \mathbf{x}_j$ are identical. To prevent the kernel matrix \mathbf{K} from becoming singular, duplicate states should be discarded.⁸ Then we define $\hat{\Pi}_{\text{BMC}}[f] := \sum_{i=1}^n w_i^{\text{BC}} f(\mathbf{x}_i^{\text{MC}})$, $\hat{\Pi}_{\text{BMCMC}}[f] := \sum_{i=1}^n w_i^{\text{BC}} f(\mathbf{x}_i^{\text{MCMC}})$ and $\hat{\Pi}_{\text{BQMC}}[f] := \sum_{i=1}^n w_i^{\text{BC}} \times f(\mathbf{x}_i^{\text{QMC}})$. This two-step procedure requires no modification to existing MC, MCMC or QMC sampling methods. Each estimator is associated with a full posterior distribution, described in Section 2.1.

A moment is taken to emphasise that the apparently simple act of re-weighting samples can have a dramatic improvement on convergence rates for integration of a sufficiently smooth integrand. This will be highlighted in the remainder of this section.

⁸This is justified since the information contained in function evaluations $f_i = f_j$ is not lost. This does *not* introduce additional bias into BC methods, in contrast to MC methods.

To date we are not aware of any previous use of BMCMC, presumably due to analytic intractability of the kernel mean when π is un-normalised. BQMC has been described by [Hickernell, Lemieux and Owen \(2005\)](#), [Marques et al. \(2013\)](#), [Särkka et al. \(2016\)](#). To the best of our knowledge, there has been no theoretical analysis of the posterior distributions associated with either method. The goal of the next section is to establish these fundamental results.

3.2 Theoretical Properties

In this section, we present novel theoretical results for BMC, BMCMC and BQMC. The setting we consider assumes that the true integrand f belongs to a RKHS \mathcal{H} and that the GP prior is based on a covariance function c which is identical to the kernel k of \mathcal{H} . This setting is aesthetically motivated and implies that the GP is not supported on \mathcal{H} , but rather on a Hilbert scale of \mathcal{H} . However, a GP can be constructed on \mathcal{H} via $c(\mathbf{x}, \mathbf{x}') = \int k(\mathbf{x}, \mathbf{y})k(\mathbf{y}, \mathbf{x}') d\pi(\mathbf{y})$ and our theoretical arguments hold with minor modification (see Lemma 2.2 of [Cialenco, Fasshauer and Ye, 2012](#)).

3.2.1 Bayesian (Markov chain) Monte Carlo. As a baseline, we begin by noting a general result for MC estimation. This requires a slight strengthening of the assumption on the kernel: $k_{\max} := \sup_{\mathbf{x} \in \mathcal{X}} k(\mathbf{x}, \mathbf{x}) < \infty$. This implies that all $f \in \mathcal{H}$ are bounded on \mathcal{X} . For MC estimators, Lemma 33 of [Song \(2008\)](#) show that, when $k_{\max} < \infty$, the WCE converges in probability at the classical rate $\|\hat{\Pi}_{MC} - \Pi\|_{\mathcal{H}^*} = O_P(n^{-1/2})$.

Turning now to BMCMC (and BMC as a special case), we consider the compact manifold $\mathcal{X} = [0, 1]^d$. Below the distribution π will be assumed to admit a density with respect to Lebesgue measure, denoted by $\pi(\cdot)$. Define the Sobolev space \mathcal{H}_α to consist of all measurable functions such that $\|f\|_{\mathcal{H}, \alpha}^2 := \sum_{i_1 + \dots + i_d \leq \alpha} \|\partial_{x_1}^{i_1} \dots \partial_{x_d}^{i_d} f\|_2^2 < \infty$. Here α is the order of \mathcal{H}_α and $(\mathcal{H}_\alpha, \|\cdot\|_{\mathcal{H}, \alpha})$ is a RKHS. Derivative counting can hence be a principled approach for practitioners to choose a suitable RKHS. All results below apply to RKHS \mathcal{H} that are norm-equivalent⁹ to \mathcal{H}_α , permitting flexibility in the choice of kernel. Specific examples of kernels are provided in Section 4.2.

Our analysis below is based on the scattered data approximation literature ([Wendland, 2005](#)), which rely on the point set having a good coverage of domain.

A minor technical assumption, that enables us to simplify the presentation of results below, is that the set $X = \{\mathbf{x}_i\}_{i=1}^n$ may be augmented with a finite, pre-determined set $Y = \{\mathbf{y}_i\}_{i=1}^m$ where m does not increase with n . Clearly this has no bearing on asymptotics. For measurable A , we write $\mathbb{P}[A] = \mathbb{E}[1_A]$ where 1_A is the indicator function of the event A .

THEOREM 1 (BMC and BMCMC in \mathcal{H}_α). *Suppose π is bounded away from zero on $\mathcal{X} = [0, 1]^d$. Let \mathcal{H} be norm-equivalent to \mathcal{H}_α where $\alpha > d/2$, $\alpha \in \mathbb{N}$. Let the states X be either:*

- *sampled independently and identically from π , or*
- *sampled from a reversible, uniformly ergodic Markov chain that leaves π invariant.*

Then $\|\hat{\Pi}_{B(MC)MC} - \Pi\|_{\mathcal{H}^} = O_P(n^{-\alpha/d+\epsilon})$ and moreover, if $f \in \mathcal{H}$ and $\delta > 0$,*

$$\begin{aligned} \mathbb{P}\{\Pi[f] - \delta < \Pi[g_n] < \Pi[f] + \delta\} \\ = 1 - O_P(\exp(-C_\delta n^{\frac{2\alpha}{d}-\epsilon})), \end{aligned}$$

where $C_\delta > 0$ depends on δ , f and $\epsilon > 0$ can be arbitrarily small. In each case the implicit constants depend on f and the randomness is with respect to the sampling of the set X .

This result shows the posterior distribution is well behaved; the posterior distribution of $\Pi[g_n]$ contracts to $\Pi[f]$ meaning, in this paper, that its mass concentrates in any open neighbourhood of the true integral $\Pi[f]$ as n is increased. This result does not address the frequentist coverage of the posterior, which is assessed empirically in Section 5.

Although we do not focus on point estimation, a brief comment is warranted: A lower bound on the WCE that can be attained by randomised algorithms in this setting is $O_P(n^{-\alpha/d-1/2})$ ([Novak and Woźniakowski, 2010](#)). Thus our result shows that the point estimate is at most one MC rate away from being optimal. Alternatively, if a deterministic grid of points is used instead, the BC point estimator converges as $O(n^{-\alpha/d+\epsilon})$ which is (up to $\epsilon > 0$) optimal for a deterministic method in \mathcal{H}_α . See Supplement A ([Briol et al., 2019](#)) for further detail.¹⁰

Theorem 1 can be generalised in several directions. First, we can consider more general domains \mathcal{X} . Specifically, the scattered data approximation bounds

⁹Two norms $\|\cdot\|, \|\cdot\|'$ on a vector space \mathcal{H} are *equivalent* when there exists constants $0 < C_1, C_2 < \infty$ such that for all $h \in \mathcal{H}$ we have $C_1 \|h\| \leq \|h\|' \leq C_2 \|h\|$.

¹⁰After completion of this work, similar results on point estimation appeared in [Oettershagen \(2017\)](#), [Bauer et al. \(2017\)](#).

that are used in our proof apply to any compact domain $\mathcal{X} \subset \mathbb{R}^d$ that satisfies an *interior cone condition* (Wendland, 2005, p. 28). Technical results in this direction were established in Oates et al. (2016). Second, we can consider other spaces \mathcal{H} . For example, a slight extension of Theorem 1 shows that certain infinitely differentiable kernels lead to exponential rates for the WCE and super-exponential rates for posterior contraction. For brevity, details are omitted.

3.2.2 Bayesian quasi Monte Carlo. The previous section focused on BMC and BMCMC in the Sobolev space \mathcal{H}_α . To avoid repetition, here we consider more interesting spaces of functions whose *mixed* partial derivatives exist, for which even faster convergence rates can be obtained using BQMC. To formulate BQMC we must posit an RKHS *a priori* and consider collections of states $\{\mathbf{x}_i^{\text{QMC}}\}_{i=1}^n$ that constitute a QMC point set tailored to the RKHS.

Consider $\mathcal{X} = [0, 1]^d$ with π uniform on \mathcal{X} . Define the Sobolev space of *dominating mixed smoothness* \mathcal{S}_α to consist of functions for which $\|f\|_{\mathcal{S}, \alpha}^2 := \sum_{j: i_j \leq \alpha} \|\partial_{x_1}^{i_1} \dots \partial_{x_d}^{i_d} f\|_2^2 < \infty$. Here α is the *order* of the space and $(\mathcal{S}_\alpha, \|\cdot\|_{\mathcal{S}, \alpha})$ is a RKHS. To build intuition, note that \mathcal{S}_α is norm-equivalent to the RKHS generated by a tensor product of Matérn kernels (Sickel and Ullrich, 2009), or indeed a tensor product of any other univariate Sobolev space-generating kernel.

For a specific space such as \mathcal{S}_α , we seek an appropriate QMC point set. The *higher-order digital* $(t, \alpha, 1, \alpha m \times m, d)$ -net construction is an example of a QMC point set for \mathcal{S}_α ; for details, we refer the reader to Dick and Pillichshammer (2010) for details.

THEOREM 2 (BQMC in \mathcal{S}_α). *Let \mathcal{H} be norm-equivalent to \mathcal{S}_α , where $\alpha \geq 2$, $\alpha \in \mathbb{N}$. Suppose states are chosen according to a higher-order digital $(t, \alpha, 1, \alpha m \times m, d)$ net over \mathbb{Z}_b for some prime b where $n = b^m$. Then $\|\hat{\Pi}_{\text{BQMC}} - \Pi\|_{\mathcal{H}^*} = O(n^{-\alpha+\epsilon})$ and, if $f \in \mathcal{S}_\alpha$ and $\delta > 0$,*

$$\begin{aligned} & \mathbb{P}\{\|\Pi[f] - \delta < \Pi[g_n] < \Pi[f] + \delta\} \\ & = 1 - O(\exp(-C_\delta n^{2\alpha-\epsilon})), \end{aligned}$$

where $C_\delta > 0$ depends on δ , f and $\epsilon > 0$ can be arbitrarily small. The implicit constant depends on f .

This result shows that the posterior is again well behaved. Indeed, the rate of contraction is much faster in \mathcal{S}_α compared to \mathcal{H}_α . In terms of point estimation, BQMC satisfies the optimal rate for any *deterministic* algorithm for integration of functions in \mathcal{S}_α (Novak

and Woźniakowski, 2010), and with a smaller rate constant than the corresponding QMC method. These results should be understood to hold on the sub-sequence $n = b^m$, as QMC methods do not in general give guarantees for all $n \in \mathbb{N}$. Note also that there is no randomness in this result, since X is a deterministic point set. It is not clear how far this result can be generalised, in terms of π and \mathcal{X} , compared to the result for BMCMC, since this would require the use of different QMC point sets.

3.2.3 Summary. In this section, we established rates of posterior contraction for BMC, BMCMC and BQMC in a general Sobolev space context. These results are essential since they establish the sound properties of the posterior, which is shown to contract to the truth as more evaluations are made of the integrand. Of course, the higher computational cost of up to $O(n^3)$ may restrict the applicability of the method in large- n regimes. However, we emphasise that the motivation is to quantify the uncertainty induced from numerical integration, an important task which often justifies the higher computational cost.

4. IMPLEMENTATION

So far we have established sound theoretical properties for BMCMC and BQMC under the assumption that the prior is well specified. Unfortunately, prior specification complicates the situation in practice since, given a test function f , there are an infinitude of RKHS to which f belongs and the specific choice of this space will impact upon the performance of the method. In particular, the scale of the posterior is driven by the scale of the prior, so that the uncertainty quantification being provided is endogenous and, if the prior is not well specified, this could mitigate the advantages of the probabilistic numerical framework. This important point is now discussed.

It is important to highlight a distinction between B(MC)MC and BQMC; for the former the choice of states does not depend on the RKHS. For B(MC)MC this allows for the possibility of off-line specification of the kernel after evaluations of the integrand have been obtained, whereas for alternative methods the kernel must be stated up-front. Our discussion below therefore centres on prior specification in relation to B(MC)MC, where several statistical techniques can be applied.

4.1 Prior Specification

The above theoretical results do not address the important issue of whether the scale of the posterior uncertainty provides an accurate reflection of the actual numerical error. This is closely related to the well-studied problem of prior specification in the kriging literature (Stein, 1999, Xu and Stein, 2017).

Consider a parametric kernel $k(\mathbf{x}, \mathbf{x}'; \theta_l, \theta_s)$, with a distinction drawn here between *scale* parameters θ_l and *smoothness* parameters θ_s . The former are defined as parametrising the norm on \mathcal{H} , whereas the latter affect the set \mathcal{H} itself. Selection of θ_l, θ_s based on data can only be successful in the absence of acute sensitivity to these parameters. For scale parameters, a wide body of evidence demonstrates that this is usually not a concern (Stein, 1999). However, selection of smoothness parameters is an active area of theoretical research (e.g., Szabó, van der Vaart and van Zanten, 2015). In some cases, it is possible to elicit a smoothness parameter from physical or mathematical considerations, such as a known number of derivatives of the integrand. Our attention below is instead restricted to scale parameters, where several approaches are discussed in relation to their suitability for BC.

4.1.1 Marginalisation. A natural approach, from a Bayesian perspective, is to set a prior $p(\theta_l)$ on parameters θ_l and then to marginalise over θ_l to obtain a posterior over $\Pi[f]$. Recent results for a certain infinitely differentiable kernel establish minimax optimal rates for this approach, including in the practically relevant setting where π is supported on a low-dimensional sub-manifold of the ambient space \mathcal{X} (Yang and Dunson, 2016). However, the act of marginalisation itself involves an intractable integral. While the computational cost of evaluating this integral will often be dwarfed by that of the integral $\Pi[f]$ of interest, marginalisation nevertheless introduces an additional undesirable computational challenge that might require several approximations (e.g., Osborne, 2010). It is however possible to analytically marginalise certain types of scale parameters, such as amplitude parameters.

PROPOSITION 2. Suppose our covariance function takes the form $c(\mathbf{x}, \mathbf{y}; \lambda) = \lambda c_0(\mathbf{x}, \mathbf{y})$ where $c_0 : \mathcal{X} \times \mathcal{X} \rightarrow \mathbb{R}$ is itself a reproducing kernel and $\lambda > 0$ is an amplitude parameter. Consider the improper prior $p(\lambda) \propto \frac{1}{\lambda}$. Then the distribution of $\Pi[g_n]$ is a Student- t distribution with location parameter

$$\Pi[c_0(\cdot, X)]\mathbf{C}_0^{-1}\mathbf{f},$$

scale parameter

$$\frac{\mathbf{f}^\top \mathbf{C}_0^{-1} \mathbf{f}}{n} \{ \Pi \Pi[c_0(\cdot, \cdot)] - \Pi[c_0(\cdot, X)] \mathbf{C}_0^{-1} \Pi[c_0(X, \cdot)] \}$$

and n degrees of freedom. Here $[\mathbf{C}_0]_{i,j} = c_0(\mathbf{x}_i, \mathbf{x}_j)$, $[c_0(\cdot, X)]_i = c_0(\cdot, \mathbf{x}_i)$, $c_0(\cdot, X) = c_0(X, \cdot)^\top$.

4.1.2 Cross-validation. Another approach to kernel choice is cross-validation. However, this can perform poorly when the number n of data is small, since the data needs to be further reduced into training and test sets. The performance estimates are also known to have large variance in those cases (Chapter 5 of Rasmussen and Williams, 2006). Since the small n scenario is one of our primary settings of interest for BC, we felt that cross-validation was unsuitable for use in applications below.

4.1.3 Empirical Bayes. An alternative to the above approaches is *empirical Bayes* (EB) selection of scale parameters, choosing θ_l to maximise the log-marginal likelihood of the data $f(\mathbf{x}_i), i = 1, \dots, n$ (Section 5.4.1 of Rasmussen and Williams, 2006). EB has the advantage of providing an objective function that is easier to optimise relative to cross-validation. However, we also note that EB can lead to over-confidence when n is very small, since the full irregularity of the integrand has yet to be uncovered (Szabó, van der Vaart and van Zanten, 2015). In addition, it can be shown that EB estimates need not converge as $n \rightarrow \infty$ when the GP is supported on infinitely differentiable functions (Xu and Stein, 2017).

For the remainder, we chose to focus on a combination of the marginalisation approach for amplitude parameters and the EB approach for remaining scale parameters. Empirical results support the use of this approach, though we do not claim that this strategy is optimal.

4.2 Tractable and Intractable Kernel Means

BC requires that the kernel mean $\mu(\pi)(\mathbf{x}) = \Pi[k(\cdot, \mathbf{x})]$ is available in closed-form. This is the case for several kernel-distribution pairs (k, π) and a subset of these pairs are recorded in Table 1. In the event that the kernel-distribution pair (k, π) of interest does not lead to a closed-form kernel mean, it is sometimes possible to determine another kernel-density pair (k', π') for which $\Pi'[k'(\cdot, \mathbf{x})]$ is available and such that (i) π is absolutely continuous with respect to π' , so that the Radon–Nikodym derivative $d\pi/d\pi'$ exists, and (ii)

TABLE 1

A non-exhaustive list of distribution π and kernel k pairs that provide a closed-form expression for both the kernel mean $\mu(\pi)(\mathbf{x}) = \Pi[k(\cdot, \mathbf{x})]$ and the initial error $\Pi[\mu(\pi)]$. Here TP refers to the tensor product of one-dimensional kernels

\mathcal{X}	π	k	Reference
$[0, 1]^d$	Unif(\mathcal{X})	Wendland TP	Oates, Papamarkou and Girolami (2016)
$[0, 1]^d$	Unif(\mathcal{X})	Matérn Weighted TP	Section 5.4
$[0, 1]^d$	Unif(\mathcal{X})	Exponentiated Quadratic	Use of error function
\mathbb{R}^d	Mixt. of Gaussians	Exponentiated Quadratic	Kennedy (1998)
\mathbb{S}^d	Unif(\mathcal{X})	Gegenbauer	Section 5.5
Arbitrary	Unif(\mathcal{X})/Mixt. of Gauss.	Trigonometric	Integration by parts
Arbitrary	Unif(\mathcal{X})	Splines	Wahba (1990)
Arbitrary	Known moments	Polynomial TP	Briol et al. (2015)
Arbitrary	Known $\partial \log \pi(\mathbf{x})$	Gradient-based Kernel	Oates et al. (2016), Oates, Girolami and Chopin (2017)

$f \, d\pi/d\pi' \in \mathcal{H}(k')$. Then one can construct an importance sampling estimator

$$(6) \quad \Pi[f] = \int f \, d\pi = \int f \frac{d\pi}{d\pi'} \, d\pi' = \Pi' \left[f \frac{d\pi}{d\pi'} \right]$$

and proceed as above (O’Hagan, 1991).

One side contribution of this research was a novel and generic approach to accommodate intractability of the kernel mean in BC. This is described in detail in Supplement B (Briol et al., 2019) and used in case studies #1 and #2 presented in Section 5.

5. RESULTS

The aims of the following section are two-fold; (i) to validate the preceding theoretical analysis and (ii) to explore the use of probabilistic integrators in a range of problems arising in contemporary statistical applications.

5.1 Assessment of Uncertainty Quantification

Our focus below is on the uncertainty quantification provided by BC and, in particular, the performance of the hybrid marginalisation/EB approach to kernel parameters. To be clear, we are not concerned with accurate point estimation at low computational cost. This is a well-studied problem that reaches far beyond the methods of this paper. Rather, we are aiming to assess the suitability of the probabilistic description for integration error that is provided by BC. Our motivation is expensive integrands, but to perform assessment in a controlled environment we considered inexpensive test functions of varying degrees of irregularity, whose integrals can be accurately approximated. These included a non-isotropic test function $f_j(\mathbf{x}) = \exp(\sin(C_j x_1)^2 - \|\mathbf{x}\|_2^2)$ with an “easy” setting $C_1 = 5$

and a “hard” setting $C_2 = 20$. The hard test function is more variable and will hence be more difficult to approximate (see Figure 2). One realisation of states $\{\mathbf{x}_i\}_{i=1}^n$, generated independently and uniformly over $\mathcal{X} = [-5, 5]^d$ (initially $d = 1$), was used to estimate the $\Pi[f_i]$. We work in an RKHS characterised by tensor products of Matérn kernels

$$k_\alpha(\mathbf{x}, \mathbf{x}') = \lambda \prod_{i=1}^d \frac{2^{1-\alpha}}{\Gamma(\alpha)} \left(\frac{\sqrt{2\alpha}|x_i - x'_i|}{\sigma_i^2} \right)^\alpha \times K_\alpha \left(\frac{\sqrt{2\alpha}|x_i - x'_i|}{\sigma_i^2} \right),$$

where K_α is the modified Bessel function of the second kind. Closed-form kernel means exist in this case for $\alpha = p + 1/2$ whenever $p \in \mathbb{N}$. In this set-up, EB was used to select the length-scale parameters $\boldsymbol{\sigma} = (\sigma_1, \dots, \sigma_d) \in (0, \infty)^d$ of the kernel, while the amplitude parameter λ was marginalised as in Prop. 2. The smoothness parameter was fixed at $\alpha = 7/2$. Note that all test functions will be in the space \mathcal{H}_α for any $\alpha > 0$ and there is a degree of arbitrariness in this choice of prior.

Results are shown in Figure 2. Error-bars are used to denote the 95% posterior credible regions for the value of the integral and we also display the values $\hat{\sigma}_i$ of the length scale σ_i selected by EB.¹¹ The $\hat{\sigma}_i$ appear to converge rapidly as $n \rightarrow \infty$; this is encouraging but we emphasise that we do not provide theoretical guarantees for EB in this work. On the negative side, over-confidence is possible at small values of n . Indeed, the BC posterior is liable to be over-confident under EB,

¹¹The term “credible” is used loosely since the $\hat{\sigma}_i$ are estimated rather than marginalised.

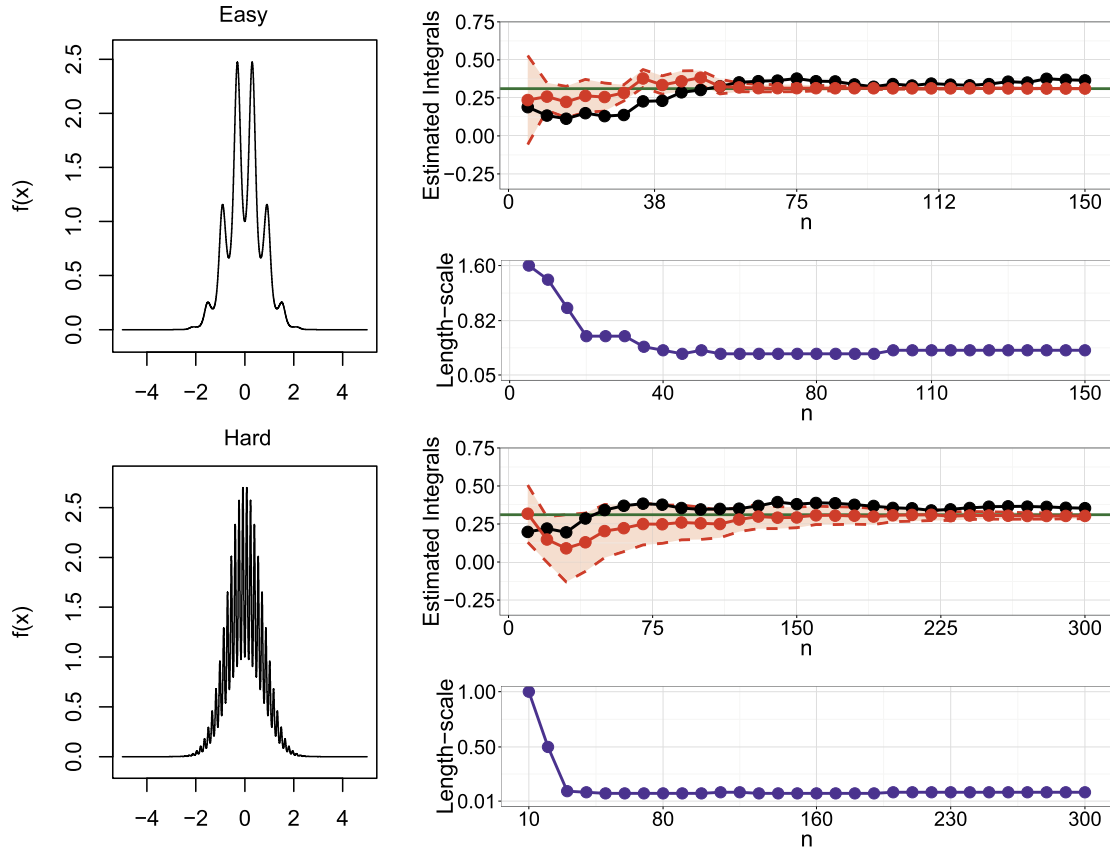


FIG. 2. Evaluation of uncertainty quantification provided by BC. Here we used empirical Bayes (EB) for σ with λ marginalised. Left: The test functions f_1 (top), f_2 (bottom) in $d = 1$ dimension. Right: Solutions provided by Monte Carlo (MC; black) and Bayesian MC (BMC; red), for one typical realisation. 95% credible regions are shown for BMC and the green horizontal line gives the true value of the integral. The blue curve gives the corresponding lengthscale parameter selected by EB.

since in the absence of evidence to the contrary, EB selects large values for σ that correspond to more regular functions; this is most evident in the “hard” case.

Next we computed coverage frequencies for $100(1 - \gamma)\%$ credible regions. For each sample size n , the process was repeated over many realisations of the states $\{\mathbf{x}_i\}_{i=1}^n$, shown in Figure 3. It may be seen that (for n large enough) the uncertainty quantification provided by EB is over-cautious for the easier function f_1 , whilst being well calibrated for the more complicated functions such as f_2 . As expected, we observed that the coverage was over-confident for small values of n . Performance was then investigated with λ selected by EB in Figure 1 in Supplement C (Briol et al., 2019); in general this performed worse than when λ was marginalised. In addition, in Figure 3 in Supplement C (Briol et al., 2019), we observed that the coverage is dependent on the prior smoothness α used, with larger values of α being associated with over-

confidence particularly when the number n of samples was small.

Finally, to understand whether theoretical results on asymptotic behaviour are realised in practice, we note (in the absence of EB) that the variance $\mathbb{V}[\Pi[g_n]]$ is independent of the integrand and may be plotted as a function of n . Results in Supplement C (Briol et al., 2019) demonstrate that theoretical rates are observed in practice for $d = 1$ for BQMC; however, at large values of d , more data are required to achieve accurate estimation and increased numerical instability was observed.

The results on test functions provided in this section illustrate the extent to which uncertainty quantification is possible using BC. In particular, for our examples, we observed reasonable frequentist coverage if the number n of samples was not too small. For the remainder we explore possible roles for BMCMC and BQMC in statistical applications. Four case studies, carefully chosen to highlight both the strengths and the weak-

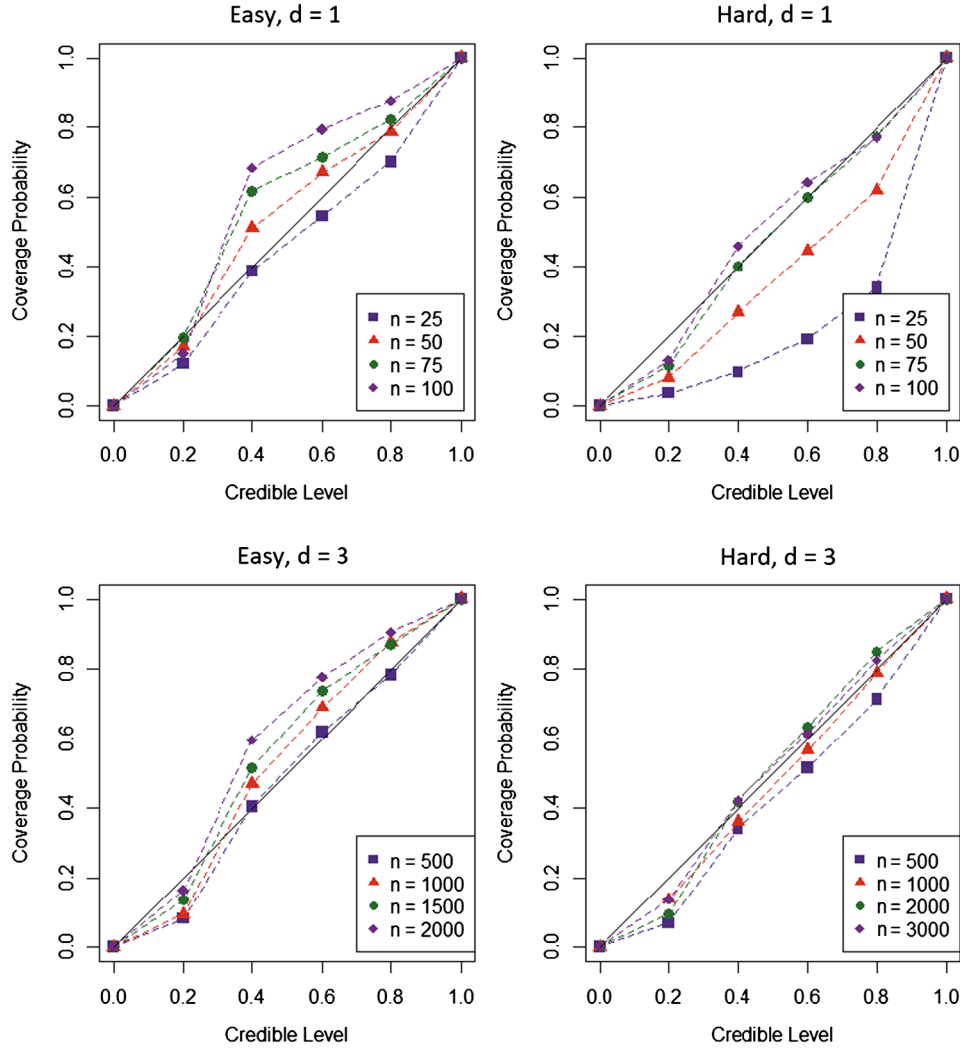


FIG. 3. Evaluation of uncertainty quantification provided by BC. Here we used empirical Bayes for σ with λ marginalised in dimensions $d = 1$ (top) and $d = 3$ (bottom). Coverage frequencies (computed from 500 (top) or 150 (bottom) realisations) were compared against notional $100(1 - \gamma)\%$ Bayesian credible regions for varying level γ and number of observations n . The upper-left quadrant represents conservative credible intervals whilst the lower-right quadrant represents over-confident intervals. Left: “Easy” test function f_1 . Right: “Hard” test function f_2 .

nesses of BC are presented. Brief critiques of each study are contained below, the full details of which can be found in Supplement D (Briol et al., 2019).

5.2 Case Study #1: Model Selection Via Thermodynamic Integration

Consider the problem of selecting a single best model among a set $\{\mathcal{M}_1, \dots, \mathcal{M}_M\}$, based on data y assumed to arise from a true model in this set. The Bayesian solution, assuming a uniform prior over models, is to select the MAP model. We focus on the case with uniform prior on models $p(\mathcal{M}_i) = 1/M$, and this problem hence reduces to finding the largest marginal likelihood $p_i = p(y|\mathcal{M}_i)$. The p_i are usu-

ally intractable integrals over the parameters θ_i associated with model \mathcal{M}_i . One widely-used approach to model selection is to estimate each p_i in turn, say by \hat{p}_i , then to take the maximum of the \hat{p}_i over $i \in \{1, \dots, M\}$. In particular, thermodynamic integration is one approach to approximation of marginal likelihoods p_i for individual models (Gelman and Meng, 1998, Friel and Pettitt, 2008).

In many contemporary applications the MAP model is not well identified, for example in variable selection where there are very many candidate models. Then, the MAP becomes sensitive to numerical error in the \hat{p}_i , since an incorrect model \mathcal{M}_i , $i \neq k$ can be assigned an overly large value of \hat{p}_i due to numerical error, in

which case it could be selected in place of the true MAP model. Below we explore the potential to exploit probabilistic integration to surmount this problem.

5.2.1 Thermodynamic integration. To simplify notation below, we consider computation of a single p_i and suppress dependence on the index i corresponding to model \mathcal{M}_i . Denote the parameter space by Θ . For $t \in [0, 1]$ (an *inverse temperature*) define the *power posterior* π_t , a distribution over Θ with density $\pi_t(\boldsymbol{\theta}) \propto p(\mathbf{y}|\boldsymbol{\theta})^t p(\boldsymbol{\theta})$. The thermodynamic identity is formulated as a double integral:

$$\log p(\mathbf{y}) = \int_0^1 dt \int_{\Theta} \log p(\mathbf{y}|\boldsymbol{\theta}) d\pi_t(\boldsymbol{\theta}).$$

The thermodynamic integral can be re-expressed as $\log p(\mathbf{y}) = \int_0^1 g(t) dt$, $g(t) = \int_{\Theta} f(\boldsymbol{\theta}) d\pi_t(\boldsymbol{\theta})$, where $f(\boldsymbol{\theta}) = \log p(\mathbf{y}|\boldsymbol{\theta})$. Standard practice is to discretise the outer integral and estimate the inner integral using MCMC: Letting $0 = t_1 < \dots < t_m = 1$ denote a fixed *temperature schedule*, we thus have (e.g., using the trapezium rule)

$$(7) \quad \begin{aligned} \log p(\mathbf{y}) &\approx \sum_{i=2}^m (t_i - t_{i-1}) \frac{\hat{g}_i + \hat{g}_{i-1}}{2}, \\ \hat{g}_i &= \frac{1}{n} \sum_{j=1}^n \log p(\mathbf{y}|\boldsymbol{\theta}_{i,j}), \end{aligned}$$

where $\{\boldsymbol{\theta}_{i,j}\}_{j=1}^n$ are MCMC samples from π_{t_i} . Several improvements have been proposed, including the use of higher-order numerical quadrature for the outer integral (Friel, Hurn and Wyse, 2014, Hug et al., 2016) and the use of control variates for the inner integral (Oates, Girolami and Chopin, 2017, Oates, Papamarkou and Girolami, 2016). To date, probabilistic integration has not been explored in this context.

5.2.2 Probabilistic thermodynamic integration. Our proposal is to apply BC to both the inner and outer integrals. This is instructive, since nested integrals are prone to propagation and accumulation of numerical error. Several features of the method are highlighted.

Transfer learning. In the probabilistic approach, the two integrands f and g are each assigned prior probability models. For the inner integral, we assign a prior $f \sim \mathcal{N}(0, k_f)$. Our data here are the $nm \times 1$ vector \mathbf{f} where $f_{(i-1)n+j} = f(\boldsymbol{\theta}_{i,j})$. For estimating g_i with BC, we have m times as much data as for the MC estimator \hat{g}_i , in Eq. (7), which makes use of only n function evaluations. Here, information transfer across temperatures is made possible by the explicit model for f underpinning BC.

In the posterior, $\mathbf{g} = [g(t_1), \dots, g(t_T)]$ is a Gaussian random vector with $\mathbf{g}|\mathbf{f} \sim \mathcal{N}(\boldsymbol{\mu}, \boldsymbol{\Sigma})$ where the mean and covariance are defined, in the obvious notation, by

$$\begin{aligned} \boldsymbol{\mu}_a &= \Pi_{t_a}[\mathbf{k}_f(\cdot, X)] \mathbf{K}_f^{-1} \mathbf{f}, \\ \boldsymbol{\Sigma}_{a,b} &= \Pi_{t_a} \Pi_{t_b} [k_f(\cdot, \cdot)] \\ &\quad - \Pi_{t_a}[\mathbf{k}_f(\cdot, X)] \mathbf{K}_f^{-1} \Pi_{t_b}[\mathbf{k}_f(X, \cdot)], \end{aligned}$$

where $X = \{\boldsymbol{\theta}_{i,j}\}_{j=1}^n$ and \mathbf{K}_f is an $nm \times nm$ kernel matrix defined by k_f .

Inclusion of prior information. For the outer integral, it is known that discretisation error can be substantial; Friel, Hurn and Wyse (2014) proposed a second-order correction to the trapezium rule to mitigate this bias, while Hug et al. (2016) pursued the use of Simpson's rule. Attacking this problem from the probabilistic perspective, we do not want to place a stationary prior on $g(t)$, since it is known from extensive empirical work that $g(t)$ will vary more at smaller values of t . Indeed the rule-of-thumb $t_i = (i/m)^5$ is commonly used (Calderhead and Girolami, 2009). We would like to encode this information into our prior. To do this, we proceed with an importance sampling step $\log p(\mathbf{y}) = \int_0^1 g(t) dt = \int_0^1 h(t) \pi(t) dt$. The rule-of-thumb implies an importance distribution $\pi(t) \propto 1/(\epsilon + 5t^{4/5})$ for some small $\epsilon > 0$, which renders the function $h = g/\pi$ approximately stationary (made precise in Supplement D.1 (Briol et al., 2019)). A stationary GP prior $h \sim \mathcal{N}(0, k_h)$ on the transformed integrand h provides the encoding of this prior knowledge that was used.

Propagation of uncertainty. Under this construction, in the posterior $\log p(\mathbf{y})$ is Gaussian with mean and covariance defined as

$$\begin{aligned} \mathbb{E}[\log p(\mathbf{y})] &= \Pi[\mathbf{k}_h(\cdot, T)] \mathbf{K}_h^{-1} \boldsymbol{\mu} \\ \mathbb{V}[\log p(\mathbf{y})] &= \underbrace{\Pi \Pi[\mathbf{k}_h(\cdot, \cdot)] - \Pi[\mathbf{k}_h(\cdot, T)] \mathbf{K}_h^{-1} \Pi[\mathbf{k}_h(T, \cdot)]}_{(*)} \\ &\quad + \underbrace{\Pi[\mathbf{k}_h(\cdot, T)] \mathbf{K}_h^{-1} \boldsymbol{\Sigma} \mathbf{K}_h^{-1} \Pi[\mathbf{k}_h(T, \cdot)]}_{(**)}, \end{aligned}$$

where $T = \{t_i\}_{i=1}^m$ and \mathbf{K}_h is an $m \times m$ kernel matrix defined by k_h . The term (*) arises from BC on the outer integral, while the term (**) arises from propagating numerical uncertainty from the inner integral through to the outer integral.

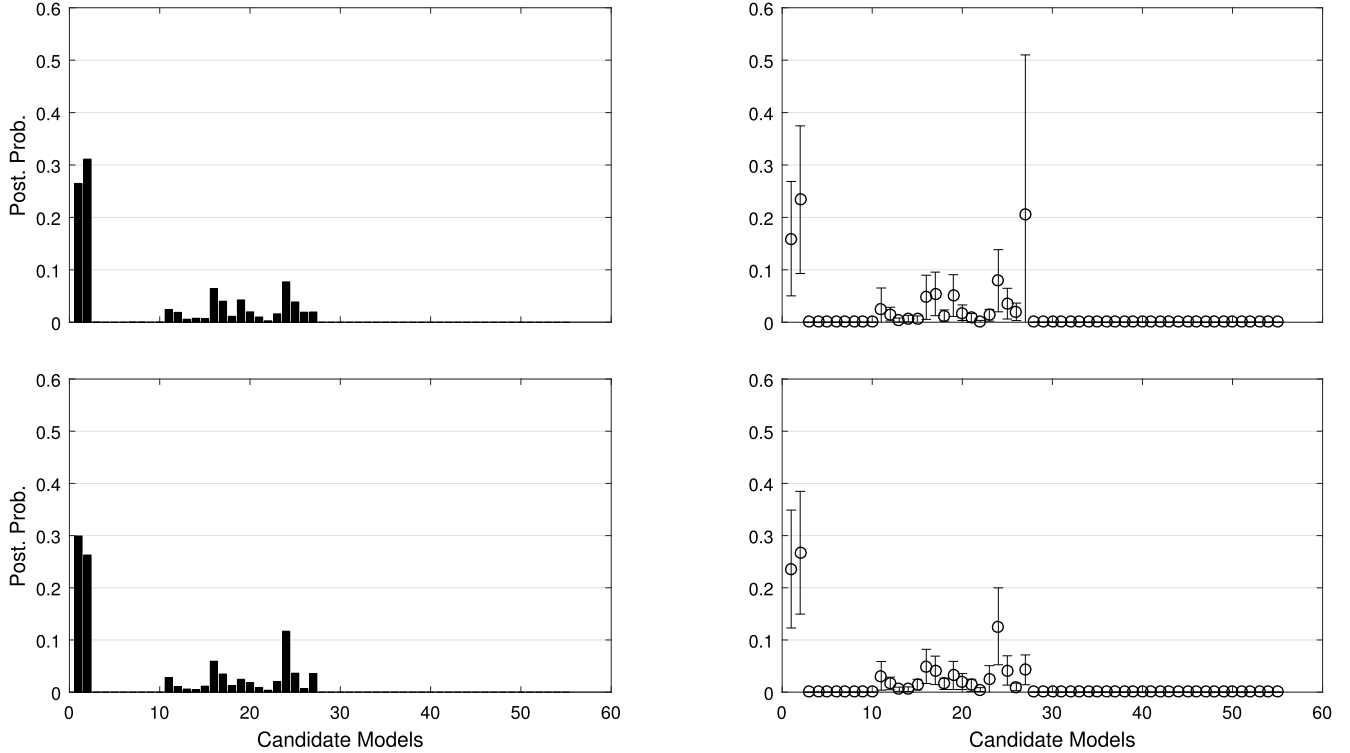


FIG. 4. *Probabilistic thermodynamic integration; illustration on variable selection for logistic regression (the true model was \mathcal{M}_1). Standard and probabilistic thermodynamic integration were used to approximate marginal likelihoods and, hence, the posterior over models. Each row represents an independent realisation of MCMC, while the data \mathbf{y} were fixed. Left: Standard Monte Carlo, where point estimates for marginal likelihood were assumed to have no associated numerical error. Right: Probabilistic integration, where a model for numerical error on each integral was propagated through into the posterior over models. The probabilistic approach produces a “probability distribution over a probability distribution”, where the numerical uncertainty is modelled on top of the usual uncertainty associated with model selection.*

5.2.3 *Simulation study.* An experiment was conducted to elicit the MAP model from a collection of 56 candidate logistic regression models in a variable selection setting. This could be achieved in many ways; our aim was not to compare accuracy of point estimates, but rather to explore the probability model that, unlike in standard methods, is provided by BC. Full details are in Supplement D.1 (Briol et al., 2019).

Results are shown in Figure 4. Here we compared approximations to the model posterior obtained using the standard method versus the probabilistic method, over two realisations of the MCMC (the data \mathbf{y} were fixed). We make some observations: (i) The probabilistic approach models numerical uncertainty on top of the usual statistical uncertainty. (ii) The computation associated with BC required less time, in total, than the time taken afforded to MCMC. (iii) The same model was not always selected as the MAP when numerical error was ignored and depended on the MCMC random seed. In contrast, under the probabilistic approach, either \mathcal{M}_1 or \mathcal{M}_2 could feasibly be the MAP under

any of the MCMC realisations, up to numerical uncertainty. (iv) The top row of Figure 4 shows a large posterior uncertainty over the marginal likelihood for \mathcal{M}_{27} . This could be used as an indicator that more computational effort should be expended on this particular integral. (v) The posterior variance was dominated by uncertainty due to discretisation error in the outer integral, rather than the inner integral. This suggests that numerical uncertainty could be reduced by allocating more computational resources to the outer integral rather than the inner integral.

5.3 Case Study #2: Uncertainty Quantification for Computer Experiments

Here we consider an industrial scale computer model for the Teal South oil field, New Orleans (Hajizadeh, Christie and Demyanov, 2011). Conditional on field data, posterior inference was facilitated using state-of-the-art MCMC (Lan et al., 2016). Oil reservoir models are generally challenging for MCMC: First, simulating from those models can be time-consuming, mak-

ing the cost of individual MCMC samples a few minutes to several hours. Second, the posterior distribution will often exhibit strongly non-linear concentration of measure. Here we computed statistics of interest using BMCMC, where the uncertainty quantification afforded by BC aims to enable valid inferences in the presence of relatively few MCMC samples. Full details are provided in Supplement D.2 (Briol et al., 2019).

Quantification of the uncertainty associated with predictions is a major topic of ongoing research in this field (Mohamed, Christie and Demyanov, 2010, Hajizadeh, Christie and Demyanov, 2011, Park et al., 2013) due to the economic consequences associated with inaccurate predictions of quantities such as future oil production rate. A probabilistic model for numerical error in integrals associated with prediction could provide a more complete uncertainty assessment.

The particular integrals that we considered are posterior means for each model parameter, and we compared against an empirical benchmark obtained with brute force MCMC. BMCMC was employed with a Matérn $\alpha = 3/2$ kernel whose lengthscale-parameter was selected using EB. Estimates for posterior means were obtained using both standard MCMC and BMCMC, shown in Figure 5. For this example the posterior distribution provides sensible uncertainty quantification for integrals 1, 3, 6–9, but was over-confident for integrals 2, 4, 5. The point accuracy of the BMCMC estimator matched that of the standard MCMC estimator. The lack of faster convergence for BMCMC appears to be due to inaccurate estimation of the kernel mean and we conjecture that alternative exact approaches, such as Oates, Girolami and Chopin (2017), may provide improved performance in this context. However, standard confidence intervals obtained from the CLT for MCMC with a plug-in estimate for the asymptotic variance were over-confident for parameters 2-9.

5.4 Case Study #3: High-Dimensional Random Effects

Our aim here was to explore whether more flexible representations afforded by weighted combinations of Hilbert spaces enable probabilistic integration when \mathcal{X} is high-dimensional. The focus was BQMC, but the methodology could be applied to other probabilistic integrators.

5.4.1 Weighted spaces. The formulation of high (and infinite)-dimensional QMC can be achieved with a construction known as a *weighted* Hilbert space.

These spaces, defined below, are motivated by the observation that many integrands encountered in applications seem to vary more in lower dimensional projections compared to higher dimensional projections. Our presentation below follows Section 2.5.4 and 12.2 of Dick and Pillichshammer (2010), but the idea goes back at least to Wahba (1990), Chapter 10.

As usual with QMC, we work in $\mathcal{X} = [0, 1]^d$ and π uniform over \mathcal{X} . Let $\mathcal{I} = \{1, 2, \dots, d\}$. For each subset $u \subseteq \mathcal{I}$, define a weight $\gamma_u \in (0, \infty)$ and denote the collection of all weights by $\boldsymbol{\gamma} = \{\gamma_u\}_{u \subseteq \mathcal{I}}$. Consider the space $\mathcal{H}_{\boldsymbol{\gamma}}$ of functions of the form $f(\mathbf{x}) = \sum_{u \subseteq \mathcal{I}} f_u(\mathbf{x}_u)$, where f_u belongs to an RKHS \mathcal{H}_u with kernel k_u and \mathbf{x}_u denotes the components of \mathbf{x} that are indexed by $u \subseteq \mathcal{I}$. This is not restrictive, since any function can be written in this form by considering only $u = \mathcal{I}$. We turn $\mathcal{H}_{\boldsymbol{\gamma}}$ into a Hilbert space by defining an inner product $\langle f, g \rangle_{\boldsymbol{\gamma}} := \sum_{u \subseteq \mathcal{I}} \gamma_u^{-1} \langle f_u, g_u \rangle_u$ where $\boldsymbol{\gamma} = \{\gamma_u : u \subseteq \mathcal{I}\}$. Constructed in this way, $\mathcal{H}_{\boldsymbol{\gamma}}$ is an RKHS with kernel $k_{\boldsymbol{\gamma}}(\mathbf{x}, \mathbf{x}') = \sum_{u \subseteq \mathcal{I}} \gamma_u k_u(\mathbf{x}, \mathbf{x}')$. Intuitively, the weights γ_u can be taken to be small whenever the function f does not depend heavily on the $|u|$ -way interaction of the states \mathbf{x}_u . Thus, most of the γ_u will be small for a function f that is effectively low-dimensional. A measure of the effective dimension of the function is given by $\sum_{u \subseteq \mathcal{I}} \gamma_u$; in an extreme case d could even be infinite provided that this sum remains bounded (Dick, Kuo and Sloan, 2013).

The (canonical) *weighted* Sobolev space of dominating mixed smoothness $\mathcal{S}_{\alpha, \boldsymbol{\gamma}}$ is defined by taking each of the component spaces to be \mathcal{S}_{α} . In finite dimensions $d < \infty$, BQMC rules based on a higher-order digital net attain optimal WCE rates $O(n^{-\alpha+\epsilon})$ for this RKHS; see Supplement D.3 (Briol et al., 2019) for full details.

5.4.2 Semi-parametric random effects regression. For illustration, we considered generalised linear models, and focus on a Poisson semi-parametric random effects regression model studied by Kuo et al. (2008), Example 2. The context is inference for the parameters $\boldsymbol{\beta}$ of the following model:

$$Y_j | \lambda_j \sim \text{Po}(\lambda_j)$$

$$\log(\lambda_j) = \beta_0 + \beta_1 z_{1,j} + \beta_2 z_{2,j} + u_1 \phi_1(z_{2,j}) + \dots + u_d \phi_d(z_{2,j})$$

$$u_j \sim N(0, \tau^{-1}) \text{ independent.}$$

Here $z_{1,j} \in \{0, 1\}$, $z_{2,j} \in (0, 1)$ and $\phi_j(z) = [z - \kappa_j]_+$ where $\kappa_j \in (0, 1)$ are pre-determined knots. We took

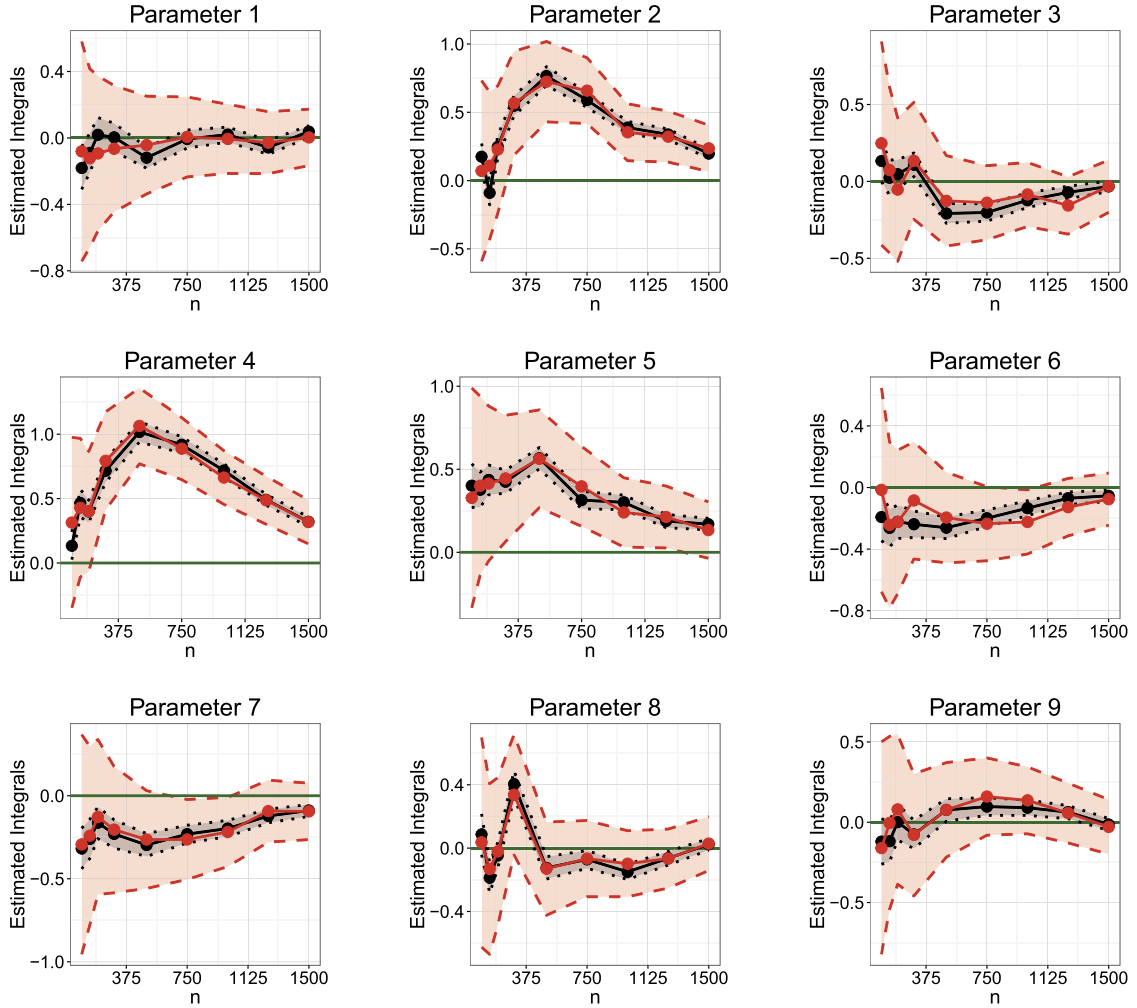


FIG. 5. Numerical estimation of parameter posterior means for the Teal South oil field model (centered around the true values). The green line gives the exact value of the integral. The MCMC (black line) and BMCMC point estimates (red line) provided similar performance. The MCMC 95% confidence intervals, based on estimated asymptotic variance (black dotted lines), are poorly calibrated whereas with the BMCMC 95% credible intervals (red dotted lines) provide a more honest uncertainty assessment.

$d = 50$ equally spaced knots in $[\min z_2, \max z_2]$. Inference for β requires multiple evaluations of the observed data likelihood $p(\mathbf{y}|\beta) = \int_{\mathbb{R}^d} p(\mathbf{y}|\beta, \mathbf{u})p(\mathbf{u}) d\mathbf{u}$ and therefore is a candidate for probabilistic integration methods, in order to model the cumulative uncertainty of estimating multiple numerical integrals.

In order to transform this integration problem to the unit cube, we perform the change of variables $x_j = \Phi^{-1}(u_j)$ so that we wish to evaluate $p(\mathbf{y}|\beta) = \int_{[0,1]^d} p(\mathbf{y}|\beta, \Phi^{-1}(\mathbf{x}))d\mathbf{x}$. Here, $\Phi^{-1}(\mathbf{x})$ denotes the standard Gaussian inverse CDF applied to each component of \mathbf{x} . Probabilistic integration here proceeds under the hypothesis that the integrand $f(\mathbf{x}) = p(\mathbf{y}|\beta, \Phi^{-1}(\mathbf{x}))$ belongs to (or at least can be well approximated by functions in) $\mathcal{S}_{\alpha, \gamma}$ for some smoothness parameter α and some weights γ . Intuitively, the inte-

grand $f(\mathbf{x})$ is such that an increase in the value of x_j at the knot κ_j can be compensated for by a decrease in the value of x_{j+1} at a neighbouring knot κ_{j+1} , but not by changing values of \mathbf{x} at more remote knots. Therefore, we expect $f(\mathbf{x})$ to exhibit strong individual and pairwise dependence on the x_j , but expect higher-order dependency to be weaker. This motivates the weighted space assumption. Sinescu, Kuo and Sloan (2012) provides theoretical analysis for the choice of weights γ . Here, weights γ of order two were used; $\gamma_u = 1$ for $|u| \leq d_{\max}$, $d_{\max} = 2$, $\gamma_u = 0$ otherwise, which corresponds to an assumption of low-order interaction terms (though f can still depend on all d of its arguments). Full details are provided in Supplement D.3 (Briol et al., 2019).

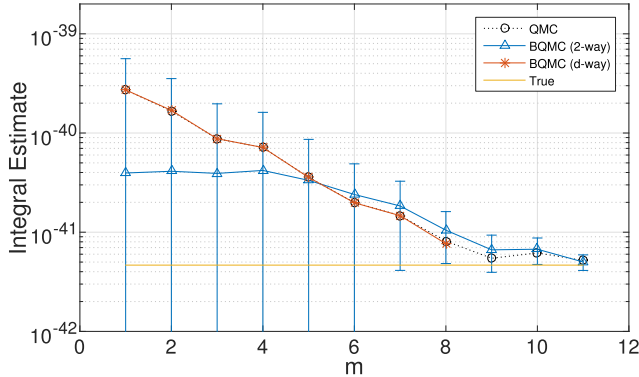


FIG. 6. Application to semi-parametric random effects regression in $d = 50$ dimensions, based on $n = 2^m$ samples from a higher-order digital net. [Error bars show 95% credible regions. To improve visibility results are shown on the log-scale; error bars are symmetric on the linear scale. A brute-force QMC estimate was used to approximate the true value of the integral $p(\mathbf{y}|\boldsymbol{\beta})$ where $\boldsymbol{\beta} = (0, 1, 1)$ was the data-generating value of the parameter.]

Results in Figure 6 showed that the 95% posterior credible regions more-or-less cover the truth for this problem, suggesting that the uncertainty estimates are appropriate. On the negative side, the BQMC method does not encode non-negativity of the integrand and, consequently, some posterior mass is placed on negative values for the integral, which is not meaningful. To understand the effect of the weighted space construction here, we compared against the BQMC point estimate with d -way interactions ($u \in \{\emptyset, \mathcal{I}\}$). An interesting observation was that these point estimates closely followed those produced by QMC.

5.5 Case Study #4: Spherical Integration for Computer Graphics

Probabilistic integration methods can be defined on arbitrary manifolds, with formulations on non-Euclidean spaces suggested as far back as Diaconis (1988) and recently exploited in the context of computer graphics (Brouillat et al., 2009, Marques et al., 2015). This forms the setting for our final case study.

5.5.1 Global illumination integrals. Below we analyse BQMC on the d -sphere $\mathbb{S}^d = \{\mathbf{x} = (x_1, \dots, x_{d+1}) \in \mathbb{R}^{d+1} : \|\mathbf{x}\|_2 = 1\}$ in order to estimate integrals of the form $\Pi[f] = \int_{\mathbb{S}^d} f \, d\pi$, where π is the spherical measure (i.e., uniform over \mathbb{S}^d with $\int_{\mathbb{S}^d} d\pi = 1$).

Probabilistic integration is applied to compute global illumination integrals used in the rendering of surfaces (Pharr and Humphreys, 2004), and we therefore focus on the case where $d = 2$. Uncertainty quantification is motivated by inverse global illumination (e.g., Yu et al.,

1999), where the task is to make inferences from noisy observation of an object via computer-based image synthesis; a measure of numerical uncertainty could naturally be propagated in this context. Below, to limit scope, we restrict attention to uncertainty quantification in the forward problem.

The models involved in global illumination are based on three main factors: a geometric model for the objects present in the scene, a model for the reflectivity of the surface of each object and a description of the light sources provided by an *environment map*. The light emitted from the environment will interact with objects in the scene through reflection. This can be formulated as an illumination integral:

$$L_o(\boldsymbol{\omega}_o) = L_e(\boldsymbol{\omega}_o) + \int_{\mathbb{S}^2} L_i(\boldsymbol{\omega}_i) \rho(\boldsymbol{\omega}_i, \boldsymbol{\omega}_o) [\boldsymbol{\omega}_i \cdot \mathbf{n}]_+ \, d\pi(\boldsymbol{\omega}_i).$$

Here $L_o(\boldsymbol{\omega}_o)$ is the *outgoing radiance*, that is, the outgoing light in the direction $\boldsymbol{\omega}_o$. $L_e(\boldsymbol{\omega}_o)$ represents the amount of light emitted by the object itself (which we will assume to be known) and $L_i(\boldsymbol{\omega}_i)$ is the light hitting the object from direction $\boldsymbol{\omega}_i$. The term $\rho(\boldsymbol{\omega}_i, \boldsymbol{\omega}_o)$ is the *bidirectional reflectance distribution function* (BRDF), which models the fraction of light arriving at the surface point from direction $\boldsymbol{\omega}_i$ and being reflected towards direction $\boldsymbol{\omega}_o$. Here \mathbf{n} is a unit vector normal to the surface of the object. Our investigation is motivated by strong empirical results for BQMC in this context obtained by Marques et al. (2015).

To assess the performance of BQMC, we consider a typical illumination integration problem based on a California lake environment. The goal here is to compute intensities for each of the three RGB colour channels corresponding to observing a virtual object from a fixed direction $\boldsymbol{\omega}_o$. We consider the case of an object directly facing the camera ($\boldsymbol{\omega}_o = \mathbf{n}$). For the BRDF, we took $\rho(\boldsymbol{\omega}_i, \boldsymbol{\omega}_o) = (2\pi)^{-1} \exp(\boldsymbol{\omega}_i \cdot \boldsymbol{\omega}_o - 1)$. The integrand $f(\boldsymbol{\omega}_i) = L_i(\boldsymbol{\omega}_i) \rho(\boldsymbol{\omega}_i, \boldsymbol{\omega}_o) [\boldsymbol{\omega}_i \cdot \boldsymbol{\omega}_o]_+$ was modelled in a Sobolev space of low smoothness. The specific function space that we consider is the Sobolev space $\mathcal{H}_\alpha(\mathbb{S}^d)$ for $\alpha = 3/2$, formally defined in Supplement D.4 (Briol et al., 2019).

5.5.2 Results. Both BMC and BQMC were tested on this example. To ensure fair comparison, identical kernels were taken as the basis for both methods. BQMC was employed using a *spherical t -design* (Bondarenko, Radchenko and Viazovska, 2013). It can be shown that for BQMC $\|\hat{\Pi}_{\text{BQMC}} - \Pi\|_{\mathcal{H}^*} = O(n^{-3/4})$ when this point set is used (see Supplement D.4 (Briol et al., 2019)).

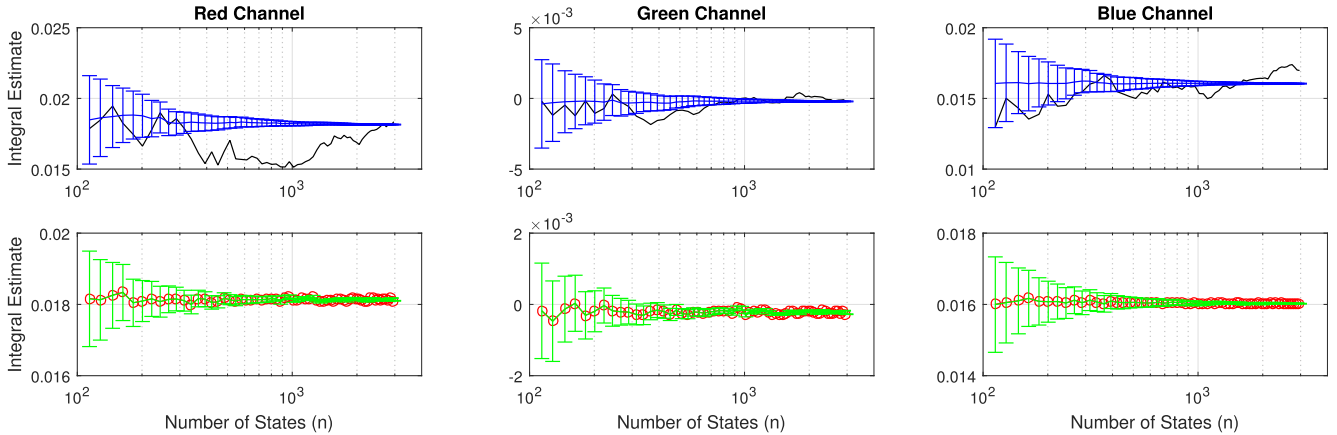


FIG. 7. Probabilistic integration over the sphere was employed to estimate the RGB colour intensities for the California lake environment. [Error bars for BMC (blue) and BQMC (green) represent 95% credible intervals. MC estimates (black) and QMC estimates (red) are shown for reference.]

Figure 7 shows performance in RGB-space. For this particular test function, the BQMC point estimate was almost identical to the QMC estimate at all values of n . Overall, both BMC and BQMC provided sensible quantification of uncertainty for the value of the integral at all values of n that were considered.

6. CONCLUSION

The increasing sophistication of computational models, of which numerical integration is one component, demands an improved understanding of how numerical error accumulates and propagates through computation. In (now common) settings where integrands are computationally intensive, or very many numerical integrals are required, effective methods are required that make full use of information available about the problem at hand. This is evidenced by the recent success of QMC, which leverages the smoothness properties of integrands. Probabilistic numerics puts the statistician in centre stage and aims to *model* the integrand. This approach was eloquently summarised by Kadane (1985), who proposed the following vision for the future of computation:

“Statistics can be thought of as a set of tools used in making decisions and inferences in the face of uncertainty. Algorithms typically operate in such an environment. Perhaps then, statisticians might join the teams of scholars addressing algorithmic issues.”

This paper explored probabilistic integration from the perspective of the statistician. Our results highlight

both the advantages and disadvantages of such an approach. On the positive side, the general methodology described a unified framework in which existing MCMC and QMC methods can be associated with a probability distribution that models discretisation error. Posterior contraction rates were, for the first time, established. On the negative side, there remain many substantial open questions, in terms of philosophical foundations, theoretical analysis and practical application. These are discussed below.

Philosophy: There are several issues concerning interpretation. First, whose epistemic uncertainty is being modelled? In Hennig, Osborne and Girolami (2015) it was argued that the uncertainty being modelled is that of a hypothetical agent “that we get to design”. That is, the statistician selects priors and loss functions for the agent so that it best achieves the statistician’s own goals. These goals typically involve a combination of relatively black-box behaviour, to perform well on a diverse range of problems, and a low computational overhead. Interpretation of the posterior is then more subtle than for subjective inference and many of the points of contention for objective inference also appear in this framework.

Methodology: There are options as to which part of the numerical method should be modelled. In this paper, the integrand f was considered to be uncertain while the distribution π was considered to be known. However, one could alternatively suppose that both f and π are unknown, pursued in Oates et al. (2017). Regardless, the endogenous nature of the uncertainty quantification means that in practice one is reliant on effective methods for data-driven estimation of kernel parameters. The interaction of standard methods,

such as empirical Bayes, with the task of numerical uncertainty quantification demands further theoretical research (e.g., [Xu and Stein, 2017](#)).

Theory: For probabilistic integration, further theoretical work is required. Our results did not address coverage at finite sample size, nor the interaction of coverage with methods for kernel parameter estimation. A particularly important question, recently addressed in [Kanagawa, Sriperumbudur and Fukumizu \(2016, 2017\)](#), [Xi et al. \(2018\)](#), is the behaviour of BC when the integrand does not belong to the posited RKHS.

Prior specification: A broad discussion is required on what prior information should be included, and what information should be ignored. Indeed, practical considerations essentially always demand that some aspects of prior information are ignored. Competing computational, statistical and philosophical considerations are all in play and must be balanced.

For example, the RKHS framework that we studied in this paper has the advantage of providing a flexible way to encode prior knowledge about the integrand, allowing to specify properties such as smoothness, periodicity, non-stationarity and effective low-dimension. On the other hand, several important properties, including boundedness, are less easily encoded. For BC, the possibility for importance sampling (Eq. (6)) has an element of arbitrariness that appears to preclude the pursuit of a default prior.

Even within the RKHS framework, there is the issue that integrands f will usually belong to an infinity of RKHS. Selecting an appropriate kernel is arguably the central open challenge for QMC research at present. From a practical perspective, elicitation of priors over infinite-dimensional spaces in a hard problem. An adequate choice of prior can be very informative for the numerical scheme and can significantly improve the convergence rates of the method. Methods for choosing the kernel automatically could be useful here (e.g., [Duvenaud, 2014](#)), but would need to be considered against their suitability for providing uncertainty quantification for the integral.

The list above is not meant to be exhaustive, but highlights the many areas of research that are yet to be explored.

ACKNOWLEDGMENTS

The authors are grateful for the expert feedback received from the Associate Editor and reviewers, as

well as from A. Barp, J. Cockayne, J. Dick, D. Duvenaud, A. Gelman, P. Hennig, M. Kanagawa, J. Kronander, X-L. Meng, A. Owen, C. Robert, S. Särkkä, C. Schwab, D. Simpson, J. Skilling, T. Sullivan, Z. Tan, A. Teckentrup and H. Zhu. The authors thank S. Lan and R. Marques for providing code used in case studies 2 and 4. François-Xavier Briol was supported by the EPSRC grants [EP/L016710/1, EP/R018413/1]. Chris Oates was supported by the ARC Centre of Excellence for Mathematical and Statistical Frontiers (ACEMS). Mark Girolami was supported by the EPSRC grants [EP/J016934/3, EP/K034154/1, EP/P020720/1, EP/R018413/1], an EPSRC Established Career Fellowship, the EU grant [EU/259348]. François-Xavier Briol, Chris Oates, Mark Girolami & Dino Sejdinovic were all supported by The Alan Turing Institute under grant [EP/N510129/1] and/or the Lloyds Register Foundation Programme on Data-Centric Engineering. Finally, this material was also based upon work partially supported by the National Science Foundation (NSF) under Grant DMS-1127914 to the Statistical and Applied Mathematical Sciences Institute. Any opinions, findings, and conclusions or recommendations expressed in this material are those of the author(s) and do not necessarily reflect the views of the NSF.

SUPPLEMENTARY MATERIAL

Supplement to “Probabilistic Integration: A Role in Statistical Computation?” (DOI: [10.1214/18-STS660SUPP](https://doi.org/10.1214/18-STS660SUPP); .pdf). This supplement contains all proofs as well as additional details relating to the numerical experiments.

REFERENCES

- BAUER, B., DEVROYE, L., KOHLER, M., KRZYŻAK, A. and WALK, H. (2017). Nonparametric estimation of a function from noiseless observations at random points. *J. Multivariate Anal.* **160** 93–104. [MR3688691](#)
- BERLINET, A. and THOMAS-AGNAN, C. (2004). *Reproducing Kernel Hilbert Spaces in Probability and Statistics*. Kluwer Academic, Boston, MA. [MR2239907](#)
- BOGACHEV, V. I. (1998). *Gaussian Measures. Mathematical Surveys and Monographs* **62**. Amer. Math. Soc., Providence, RI. [MR1642391](#)
- BONDARENKO, A., RADCHENKO, D. and VIAZOVSKA, M. (2013). Optimal asymptotic bounds for spherical designs. *Ann. of Math.* (2) **178** 443–452. [MR3071504](#)
- BRIOL, F.-X., OATES, C. J., GIROLAMI, M. and OSBORNE, M. A. (2015). Frank-Wolfe Bayesian quadrature: Probabilistic integration with theoretical guarantees. In *Proc. Adv. Neur. In. (NIPS)* 1162–1170.

- BRIOL, F.-X., COCKAYNE, J., TEYMUR, O., YOO, W. W., SCHOBER, M. and HENNIG, P. (2016a). Contributed discussion on article by Chkrebti, Campbell, Calderhead, and Girolami [MR3577378]. *Bayesian Anal.* **11** 1285–1293. [MR3577382](#)
- BRIOL, F.-X., OATES, C. J., GIROLAMI, M., OSBORNE, M. A. and SEJDINOVIC, D. (2019). Supplement to “Probabilistic integration: A role in statistical computation?” DOI:10.1214/18-STS660SUPP.
- BROUILLAT, J., BOUVILLE, C., LOOS, B., HANSEN, C. and BOUATOUCH, K. (2009). A Bayesian Monte Carlo approach to global illumination. *Comput. Graph. Forum* **28** 2315–2329.
- BUCHHOLZ, A. and CHOPIN, N. (2017). Improving approximate Bayesian computation via quasi Monte Carlo. [arXiv:1710:01057](#).
- CALDERHEAD, B. and GIROLAMI, M. (2009). Estimating Bayes factors via thermodynamic integration and population MCMC. *Comput. Statist. Data Anal.* **53** 4028–4045. [MR2744303](#)
- CIALENCO, I., FASSHAUER, G. E. and YE, Q. (2012). Approximation of stochastic partial differential equations by a kernel-based collocation method. *Int. J. Comput. Math.* **89** 2543–2561. [MR3004665](#)
- DIACONIS, P. (1988). Bayesian numerical analysis. In *Statistical Decision Theory and Related Topics, IV, Vol. 1 (West Lafayette, Ind., 1986)* 163–175. Springer, New York. [MR0927099](#)
- DICK, J., KUO, F. Y. and SLOAN, I. H. (2013). High-dimensional integration: The quasi-Monte Carlo way. *Acta Numer.* **22** 133–288. [MR3038697](#)
- DICK, J. and PILLICHSHAMMER, F. (2010). *Digital Nets and Sequences*. Cambridge Univ. Press, Cambridge. Discrepancy theory and quasi-Monte Carlo integration. [MR2683394](#)
- DUVENAUD, D. (2014). Automatic model construction with Gaussian processes Ph.D. thesis, Univ. Cambridge.
- EFRON, B. and TIBSHIRANI, R. J. (1993). *An Introduction to the Bootstrap. Monographs on Statistics and Applied Probability* **57**. CRC Press, New York. [MR1270903](#)
- EFTANG, J. L. and STAMM, B. (2012). Parameter multi-domain ‘hp’ empirical interpolation. *Internat. J. Numer. Methods Engrg.* **90** 412–428. [MR2911317](#)
- FRIEL, N., HURN, M. and WYSE, J. (2014). Improving power posterior estimation of statistical evidence. *Stat. Comput.* **24** 709–723. [MR3229692](#)
- FRIEL, N. and PETTITT, A. N. (2008). Marginal likelihood estimation via power posteriors. *J. R. Stat. Soc. Ser. B. Stat. Methodol.* **70** 589–607. [MR2420416](#)
- GELMAN, A. and MENG, X.-L. (1998). Simulating normalizing constants: From importance sampling to bridge sampling to path sampling. *Statist. Sci.* **13** 163–185. [MR1647507](#)
- GERBER, M. and CHOPIN, N. (2015). Sequential quasi Monte Carlo. *J. R. Stat. Soc. Ser. B. Stat. Methodol.* **77** 509–579. [MR3351446](#)
- GUNTER, T., GARNETT, R., OSBORNE, M., HENNIG, P. and ROBERTS, S. (2014). Sampling for inference in probabilistic models with fast Bayesian quadrature. In *Proc. Adv. Neur. In* 2789–2797.
- HAJIZADEH, Y., CHRISTIE, M. and DEMYANOV, V. (2011). Ant colony optimization for history matching and uncertainty quantification of reservoir models. *J. Pet. Sci. Eng.* **77** 78–92.
- HENNIG, P., OSBORNE, M. A. and GIROLAMI, M. (2015). Probabilistic numerics and uncertainty in computations. *Proc. R. Soc. Lond. Ser. A Math. Phys. Eng. Sci.* **471** 20150142, 17. [MR3378744](#)
- HICKERNELL, F. J. (1998). A generalized discrepancy and quadrature error bound. *Math. Comp.* **67** 299–322. [MR1433265](#)
- HICKERNELL, F. J., LEMIEUX, C. and OWEN, A. B. (2005). Control variates for quasi-Monte Carlo. *Statist. Sci.* **20** 1–31. [MR2182985](#)
- HUG, S., SCHWARZFISCHER, M., HASENAUER, J., MARR, C. and THEIS, F. J. (2016). An adaptive scheduling scheme for calculating Bayes factors with thermodynamic integration using Simpson’s rule. *Stat. Comput.* **26** 663–677. [MR3489863](#)
- HUSZAR, F. and DUVENAUD, D. (2012). Optimally-weighted herding is Bayesian quadrature. In *Proc. Uncertainty in Artificial Intelligence (UAI)* 377–385.
- KADANE, J. B. (1985). Parallel and sequential computation: A statistician’s view. *J. Complexity* **1** 256–263. [MR0925431](#)
- KADANE, J. B. and WASILKOWSKI, G. W. (1985). Average case ϵ -complexity in computer science. A Bayesian view. In *Bayesian Statistics, 2 (Valencia, 1983)* 361–374. North-Holland, Amsterdam. [MR0862497](#)
- KALLENBERG, O. (2002). *Foundations of Modern Probability*, 2nd ed. *Probability and Its Applications (New York)*. Springer, New York. [MR1876169](#)
- KANAGAWA, M., SRIPERUMBUDUR, B. K. and FUKUMIZU, K. (2016). Convergence guarantees for kernel-based quadrature rules in misspecified settings. In *Proc. Adv. Neur. In. (NIPS)*.
- KANAGAWA, M., SRIPERUMBUDUR, B. K. and FUKUMIZU, K. (2017). Convergence analysis of deterministic kernel-based quadrature rules in misspecified settings. [arXiv:1709.00147](#).
- KARVONEN, T. and SÄRKKÄ, S. (2017). Classical quadrature rules via Gaussian processes. *IEEE I Workshop Mach. Learn. Signal Proc.* to appear.
- KARVONEN, T. and SÄRKKÄ, S. (2018). Fully symmetric kernel quadrature. *SIAM J. Sci. Comput.* **40** A697–A720. [MR3769708](#)
- KENNEDY, M. (1998). Bayesian quadrature with non-normal approximating functions. *Stat. Comput.* **8** 365–375.
- KRISTOFFERSEN, S. (2013). The empirical interpolation method Master’s thesis, Dept. Mathematical Sciences, Norwegian Univ. Science and Technology, Trondheim.
- KUO, F. Y., DUNSMUIR, W. T. M., SLOAN, I. H., WAND, M. P. and WOMERSLEY, R. S. (2008). Quasi-Monte Carlo for highly structured generalised response models. *Methodol. Comput. Appl. Probab.* **10** 239–275. [MR2399683](#)
- LAN, S., BUI-THANH, T., CHRISTIE, M. and GIROLAMI, M. (2016). Emulation of higher-order tensors in manifold Monte Carlo methods for Bayesian inverse problems. *J. Comput. Phys.* **308** 81–101. [MR3448239](#)
- LARKIN, F. M. (1972). Gaussian measure in Hilbert space and applications in numerical analysis. *Rocky Mountain J. Math.* **2** 379–421. [MR0303193](#)
- MARQUES, R., BOUVILLE, C., RIBARDIERE, M., SANTOS, L. P. and BOUATOUCH, K. (2013). A spherical Gaussian framework for Bayesian Monte Carlo rendering of glossy surfaces. *IEEE Trans. Vis. Comput. Graph.* **19** 1619–1632.
- MARQUES, R., BOUVILLE, C., SANTOS, L. and BOUATOUCH, K. (2015). Efficient quadrature rules for illumination integrals: From quasi Monte Carlo to Bayesian Monte Carlo. *Synth. Lect. Comput. Graph. Animat.* **7** 1–92.
- MINKA, T. (2000). Deriving quadrature rules from Gaussian processes Technical report, Statistics Dept., Carnegie Mellon Univ.

- MOHAMED, L., CHRISTIE, M. and DEMYANOV, V. (2010). Comparison of stochastic sampling algorithms for uncertainty quantification. *SPE J.* **15** 31–38.
- MOSBACH, S. and TURNER, A. G. (2009). A quantitative probabilistic investigation into the accumulation of rounding errors in numerical ODE solution. *Comput. Math. Appl.* **57** 1157–1167. [MR2508546](#)
- NOVAK, E. and WOŹNIAKOWSKI, H. (2008). *Tractability of Multivariate Problems. Vol. 1: Linear Information. EMS Tracts in Mathematics 6*. European Mathematical Society (EMS), Zürich. [MR2455266](#)
- NOVAK, E. and WOŹNIAKOWSKI, H. (2010). *Tractability of Multivariate Problems. Volume II: Standard Information for Functionals. EMS Tracts in Mathematics 12*. European Mathematical Society (EMS), Zürich. [MR2676032](#)
- O’HAGAN, A. (1991). Bayes-Hermite quadrature. *J. Statist. Plann. Inference* **29** 245–260. [MR1144171](#)
- O’HAGAN, A. (1992). Some Bayesian numerical analysis. In *Bayesian Statistics, 4 (Peñíscola, 1991)* 345–363. Oxford Univ. Press, New York. [MR1380285](#)
- OATES, C. J., COCKAYNE, J. and AYKROYD, R. G. (2017). Bayesian probabilistic numerical methods for industrial process monitoring. [arXiv:1707.06107](#).
- OATES, C. J., GIROLAMI, M. and CHOPIN, N. (2017). Control functionals for Monte Carlo integration. *J. R. Stat. Soc. Ser. B. Stat. Methodol.* **79** 695–718. [MR3641403](#)
- OATES, C. J., PAPAMARKOU, T. and GIROLAMI, M. (2016). The controlled thermodynamic integral for Bayesian model evidence evaluation. *J. Amer. Statist. Assoc.* **111** 634–645. [MR3538693](#)
- OATES, C. J., COCKAYNE, J., BRIOL, F.-X. and GIROLAMI, M. (2016). Convergence rates for a class of estimators based on Stein’s identity. Bernoulli (to appear), [arXiv:1603.03220](#).
- OATES, C. J., NIEDERER, S., LEE, A., BRIOL, F. X. and GIROLAMI, M. (2017). Probabilistic models for integration error in assessment of functional cardiac models. In *Proc. Adv. Neur. In. (NIPS)*. to appear.
- OETTERSHAGEN, J. (2017). Construction of optimal cubature algorithms with applications to econometrics and uncertainty quantification Ph.D. Thesis, Univ. Bonn.
- OSBORNE, M. A. (2010). Bayesian Gaussian processes for sequential prediction, optimisation and quadrature Ph.D. thesis, Univ. Oxford.
- OSBORNE, M. A., DUVENAUD, D., GARNETT, R., RASMUSSEN, C. E., ROBERTS, S. and GHAHRAMANI, Z. (2012). Active learning of model evidence using Bayesian quadrature. In *Proc. Adv. Neur. In. (NIPS)* 46–54.
- PARK, H., SCHEIDT, C., FENWICK, D., BOUCHER, A. and CAERS, J. (2013). History matching and uncertainty quantification of facies models with multiple geological interpretations. *Comput. Geosci.* **17** 609–621.
- PHARR, M. and HUMPHREYS, G. (2004). *Physically Based Rendering: From Theory to Implementation*. Kaufmann, Los Altos.
- RASMUSSEN, C. E. and GHAHRAMANI, Z. (2002). Bayesian Monte Carlo. In *Proc. Adv. Neur. Inf. (NIPS)* 489–496.
- RASMUSSEN, C. E. and WILLIAMS, C. K. I. (2006). *Gaussian Processes for Machine Learning. Adaptive Computation and Machine Learning*. MIT Press, Cambridge, MA. [MR2514435](#)
- ROBERT, C. P. and CASELLA, G. (1999). *Monte Carlo Statistical Methods. Springer Texts in Statistics*. Springer, New York. [MR1707311](#)
- SÄRKKA, S., HARTIKAINEN, J., SVENSSON, L. and SANDBLOM, F. (2016). On the relation between Gaussian process quadratures and sigma-point methods. *J. Adv. Inf. Fusion* **11** 31–46.
- SCHÖLKOPF, B. and SMOLA, A. (2002). *Learning with Kernels: Support Vector Machines, Regularization, Optimization and Beyond*. MIT Press, Cambridge.
- SICKEL, W. and ULLRICH, T. (2009). Tensor products of Sobolev–Besov spaces and applications to approximation from the hyperbolic cross. *J. Approx. Theory* **161** 748–786. [MR2563079](#)
- SINESCU, V., KUO, F. Y. and SLOAN, I. H. (2012). On the choice of weights in a function space for quasi-Monte Carlo methods for a class of generalised response models in statistics. In *Proc. Monte Carlo and Quasi-Monte Carlo Methods*.
- SMOLA, A., GRETTON, A., SONG, L. and SCHÖLKOPF, B. (2007). A Hilbert space embedding for distributions. In *Proc. 18th I. Conf. Algorithmic Learn. Theory* 13–31.
- SOMMARIVA, A. and VIANELLO, M. (2006). Numerical cubature on scattered data by radial basis functions. *Computing* **76** 295–310. [MR2210099](#)
- SONG, L. (2008). Learning via Hilbert space embedding of distributions Ph.D. thesis, School of Information Technologies, Univ. Sydney.
- STEIN, M. L. (1995a). Predicting integrals of random fields using observations on a lattice. *Ann. Statist.* **23** 1975–1990. [MR1389861](#)
- STEIN, M. L. (1995b). Locally lattice sampling designs for isotropic random fields. *Ann. Statist.* **23** 1991–2012. [MR1389862](#)
- STEIN, M. L. (1999). *Interpolation of Spatial Data. Springer Series in Statistics*. Springer, New York. Some theory for Kriging. [MR1697409](#)
- STEINWART, I. and CHRISTMANN, A. (2008). *Support Vector Machines. Information Science and Statistics*. Springer, New York. [MR2450103](#)
- SULDIN, A. B. (1959). Wiener measure and its applications to approximation methods. I. *Izvestiya Vysshikh Uchebnykh Zavedenii. Matematika* **6** 145–158.
- SZABÓ, B., VAN DER VAART, A. W. and VAN ZANTEN, J. H. (2015). Frequentist coverage of adaptive nonparametric Bayesian credible sets. *Ann. Statist.* **43** 1391–1428. [MR3357861](#)
- TRAUB, J. F., WASILKOWSKI, G. W. and WOŹNIAKOWSKI, H. (1988). *Information-Based Complexity. Computer Science and Scientific Computing*. Academic Press, Boston, MA. [MR0958691](#)
- WAHBA, G. (1990). *Spline Models for Observational Data. CBMS-NSF Regional Conference Series in Applied Mathematics 59*. SIAM, Philadelphia, PA. [MR1045442](#)
- WENDLAND, H. (2005). *Scattered Data Approximation. Cambridge Monographs on Applied and Computational Mathematics 17*. Cambridge Univ. Press, Cambridge. [MR2131724](#)
- XI, X., BRIOL, F.-X. and GIROLAMI, M. (2018). Bayesian quadrature for multiple related integrals. International Conference on Machine Learning, PMLR 80:5369–5378, [arXiv:1801.04153](#).
- XU, W. and STEIN, M. L. (2017). Maximum likelihood estimation for a smooth Gaussian random field model. *SIAM/ASA J. Uncertain. Quantificat.* **5** 138–175. [MR3601677](#)

- YANG, Y. and DUNSON, D. B. (2016). Bayesian manifold regression. *Ann. Statist.* **44** 876–905. [MR3476620](#)
- YU, Y., DEBEVEC, P., MALIK, J. and HAWKINS, T. (1999). Inverse global illumination: Recovering reflectance models of real scenes from photographs. In *Proc. Ann. Conf. Comput. Graph. Int. Tech.* 215–224.