

EXTERNAL VISIBILITY

EDWIN BUCHMAN AND F. A. VALENTINE

It is possible to see any eleven vertices of an opaque solid regular icosahedron from some appropriate point, although it is not possible to see all twelve vertices simultaneously. In this paper we refer to visibility in the complement of a convex set as external visibility. Valentine has investigated external visibility properties in Euclidean space E^2 and E^3 . One question raised was the following: does there exist a fixed number h such that if every h vertices of an arbitrary bounded closed convex polyhedron in E^3 can see some common point externally, then all the vertices can see some common point externally?

The answer is no, which is surprising since the corresponding question in E^2 will be answered affirmatively, with $h = 5$. Figure 2 illustrates a solid convex polyhedron with $4n$ vertices ($n = 4$ in the illustration), where the top and bottom vertices (V_1 and V_2) have valence $2n - 1$. Each collection of $4n - 1$ vertices of this polyhedron can see some point in space externally, yet there is no point which all $4n$ vertices can see externally simultaneously. It will be shown that this polyhedron can be constructed for arbitrarily large n .

1. Definitions and notation. The boundary and interior of a set S are designated by $\text{bd } S$ and $\text{int } S$ respectively. The closed line segment joining the points x and y is xy , and the line through x and y is $L(x, y)$.

In order to state theorems on external visibility precisely, we define several kinds of external visibility properties:

DEFINITION 1. Suppose K is a closed convex set in E^3 , and suppose $x \in \text{bd } K$ and $p \in E^3$. Let R be a ray emanating from the origin of E^3 , and let R_x be the ray from x in the direction of R . Then

(a) x and p see each other externally relative to K if xp intersects K only at x (i.e., $xp \cap K = x$).

(b) x and p see each other externally relative to $\text{int } K$ if xp misses $\text{int } K$ (i.e., $xp \cap \text{int } K = \emptyset$).

(c) a set $S \subset \text{bd } K$ and p see each other externally relative to K ($\text{int } K$) if all points of S see p externally relative to K ($\text{int } K$).

(d) x sees ∞ externally relative to K in the direction of R if the ray R_x intersects K only at x (i.e., $R_x \cap K = x$).

(e) x sees ∞ externally relative to $\text{int } K$ in the direction of R if the ray R_x misses $\text{int } K$ (i.e., $R_x \cap \text{int } K = \emptyset$).

(f) a set $S \subset \text{bd } K$ sees ∞ externally relative to K ($\text{int } K$) in the direction of R if all points of S see ∞ in the direction of R externally relative to K ($\text{int } K$).

DEFINITION 2. A convex body in E^2 is a bounded closed convex set with a nonempty interior.

In this paper, K will always be a convex body in E^2 .

2. External visibility in E^2 .

THEOREM 1. Let K be a convex body in E^2 and suppose S is a closed subset of $\text{bd } K$. If every five points of S can see some common point externally relative to $\text{int } K$ then all of S can see some common point externally relative to K .

Proof. Since K is a bounded closed convex set in E^2 , it is easy to see that every five points of S can see a common point externally relative to K . Hence, we can assume this stronger condition. Since the theorem is trivial if S contains fewer than six points, let x_i ($i = 1, 2, 3, 4, 5, 6$) be six points of S chosen in a clockwise sense on the boundary of K . The exterior angle α_2 at x_2 is determined as in Figure 1, so that it is the angle between the two rays $\overrightarrow{x_1x_2}$ and $\overrightarrow{x_2x_3}$, and this definition extends cyclically.

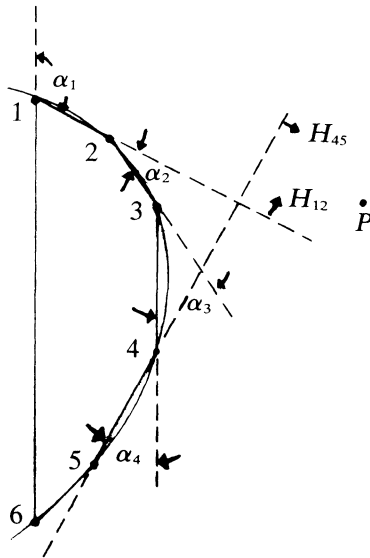


FIG. 1

Since $\sum_{i=1}^6 \alpha_i = 2\pi$, there must be some three consecutive x_i , say x_2, x_3, x_4 (without loss of generality), such that

$$(1) \quad \alpha_2 + \alpha_3 + \alpha_4 \leq \pi.$$

Now p exists by hypothesis so that p can see x_1, x_2, x_4, x_5, x_6 externally relative to K . We claim that p can likewise see x_3 . To prove this, assume that p does not see x_3 externally relative to K . Since the subset of $\text{bd } K$ which p can see is always a connected arc, it must be that p sees the entire arc of $\text{bd } K$ which connects x_1 and x_2 and does not contain x_3 . This implies that p is in the open half plane H_{12} bounded by $L(x_1, x_2)$ which does not contain x_3 . Also p must be in H_{45} , correspondingly defined. By the inequality (1), $H_{12} \cap H_{45} \neq \emptyset$ and lies on the same side of $L(x_1, x_5)$ as x_3 , and (1), in fact, holds as a strict inequality. Since p sees x_1 and x_5 , and therefore some connected arc of $\text{bd } K$ connecting x_1 and x_5 , externally relative to K , the preceding sentence implies that p sees x_3 externally relative to K , contrary to our assumption that such was not true. Since the x_i were arbitrarily chosen in S , we have shown that every six points of S can see some point p externally relative to K .

We can repeat this procedure to show that every seven points of S can see some common point externally relative to K . Let x_i ($i = 1, \dots, 7$) be seven arbitrary points of S , enumerated in a clockwise sense around $\text{bd } K$. We define the angles α_i as before, and find some three which satisfy (1). Using the result established above, we can find a point p which can see $x_1, x_2, x_4, x_5, x_6, x_7$ externally relative to K . The argument of the preceding paragraph using H_{12} and H_{45} shows that p can see all seven of the x_i externally relative to K . Since this procedure can be repeated for 8, 9, 10, \dots points of S , it follows by induction that every finite collection of points of S can see some common point externally relative to K .

This last fact implies that every finite number of points of S can see ∞ in some direction externally relative to the *interior* of K . If these directions are mapped onto the unit circle relative to its center, then the image of the set of such directions for each point of S is a closed arc of the unit circle. Since each finite collection of such arcs has a nonempty intersection, then the usual compactness argument implies that there exists a direction such that S can see ∞ in this direction externally relative to $\text{int } K$. Therefore S lies on a closed arc of $\text{bd } K$ lying between two parallel lines of support to $\text{bd } K$. Because S is closed, if we take C to be the minimal arc containing S between the two parallel lines of support, then the endpoints of C belong to S . Applying the visibility hypothesis to the endpoints of C and any third point of S between the parallel lines, it is not difficult to find a point which can see all of S externally relative to K . This completes the proof of Theorem 1.

The proofs of the following two theorems are very similar to the proof of Theorem 1.

THEOREM 2. *Let K be a convex body in E^2 and suppose S is a closed subset of $\text{bd } K$. If every five points of S can see ∞ in some common direction externally relative to K , then there exists some fixed direction in which all of S can see ∞ externally relative to K .*

Proof. In the proof of Theorem 1, replace the point p with a ray R emanating from the origin. We modify the argument so that for each point $x \in \text{bd } K$ the property of seeing p externally relative to K is replaced by seeing ∞ in the direction of R externally relative to K . Also, instead of the condition $p \in H_{12} \cap H_{45}$, we conclude that the ray emanating from x_3 in the direction of R intersects $H_{12} \cap H_{45}$. Thus modified, the first two paragraphs of the proof show that every finite subset of S can see ∞ in some common direction externally relative to K . The third paragraph, unchanged except for the final conclusion, completes the argument.

THEOREM 3. *Let K be a convex body in E^2 and suppose S is a subset of $\text{bd } K$. If every six points of S can see ∞ in some common direction externally relative to $\text{int } K$, then there exists some fixed direction in which all of S can see ∞ externally relative to $\text{int } K$.*

Proof. Suppose that S contains at least seven points x_i ($i = 1, \dots, 7$). Using the notation of Figure 1 for the corresponding angles α_i , we have $\sum_{i=1}^7 \alpha_i = 2\pi$, so there must be some three consecutive x_i , say x_2, x_3, x_4 (without loss of generality), such that $\alpha_2 + \alpha_3 + \alpha_4 < \pi$. (This is (1) rewritten as a strict inequality). Let R be a ray chosen by hypothesis so that x_i ($i = 1, 2, 4, 5, 6, 7$) each can see ∞ in the direction of R externally relative to $\text{int } K$. The strict inequality just stated implies that H_{12} and H_{45} have a nonempty intersection, and intersect on the same side of $L(x_1, x_5)$ in which x_3 lies. Since x_1, x_2, x_4, x_5 all can see ∞ in the direction of R externally relative to $\text{int } K$, this implies that x_3 too can see ∞ in the direction of R . By an argument similar to that for Theorem 1 all seven of the x_i can see ∞ in the same direction externally relative to $\text{int } K$. As in Theorems 1 and 2, we proceed by induction to show that every finite subset of S can see ∞ in some direction externally relative to $\text{int } K$. Finally, we need only the first portion of the last paragraph of the proof of Theorem 1 to complete the proof, whether S is closed or not.

Counterexamples. The number five in Theorems 1 and 2, and the number six in Theorem 3 are best in each case, as is shown by taking K to

be a regular pentagon in Theorems 1 and 2, and a regular hexagon in Theorem 3, and taking S in each case to be the set of vertices of K .

To show that S must be closed in Theorems 1 and 2, let K be the closed convex set which is the union of a square region and a semicircular region where the diameter of the semicircle is an edge of the square. Hence, K looks like a Norman window. Let S be an arc of $\text{bd } K$ consisting of the open semicircular arc of $\text{bd } K$ plus one of the adjacent closed edges of the square. Although every finite subset of S can see a common point (and also ∞ in a common direction) externally relative to K (and hence also relative to $\text{int } K$), no point exists which all of S can see externally relative to K or to $\text{int } K$, and no direction exists in which S can see ∞ externally relative to K . It should be noted that S can see ∞ externally relative to $\text{int } K$ in one direction, so the conclusion of Theorem 3 cannot be strengthened by replacing "relative to $\text{int } K$ " by "relative to K ".

3. External visibility in E^3 . In this section we construct a closed convex polyhedron K having $4n$ vertices ($n \geq 3$) with the property that for each $4n - 1$ of its vertices some common point of external visibility relative to K can be found, yet there is no point which all $4n$ vertices can see simultaneously externally relative to K . This shows that no Helly number can be found for external visibility relative to all convex bodies K in E^3 , that is, there is no fixed integer h such that for each K and each closed set $S \subset \text{bd } K$ if every h points of S can see some common point externally relative to K , then all of S can see some common point externally relative to K .

Construction. Let n be an integer with $n \geq 3$, and let $d > 0$. The points V_i^1 ($i = 1, \dots, 2n - 1$) are in the plane $z = d$ in E^3 and also are the vertices of a regular $(2n - 1)$ -gon centered at $(0, 0, d)$. Call this polygon G_1 . Rotate G_1 about the z -axis through an angle $\pi/(2n - 1)$ and translate it parallel to the z -axis so that the center $(0, 0, d)$ goes to $(0, 0, -d)$. Call the new polygon G_2 . The vertices of G_2 are V_i^2 ($i = 1, \dots, 2n - 1$) where V_2^1 is "between" V_1^1 and V_1^2 in terms of the rotation about the z -axis, and the remaining vertices V_i^2 advance cyclically. This is illustrated in Figure 2 when $n = 4$.

We can find a point $V_1 = (0, 0, h)$ on the z -axis such that V_1 is coplanar with $V_1^1, V_2^1,$ and V_1^2 , and this coplanar property continues to hold if the superscripts are cyclically advanced. Correspondingly we can choose $V_2 = (0, 0, -h)$ so that it will have the same coplanar properties with $V_2^1, V_2^2,$ and V_2^3 , etc.

The polyhedron K which has the $4n$ vertices $V_1, V_2, V_1^1, V_2^1, (i = 1, \dots, 2n - 1)$ has $4n - 2$ congruent quadrilateral faces, and the entire surface is the union of two congruent conical surfaces which have

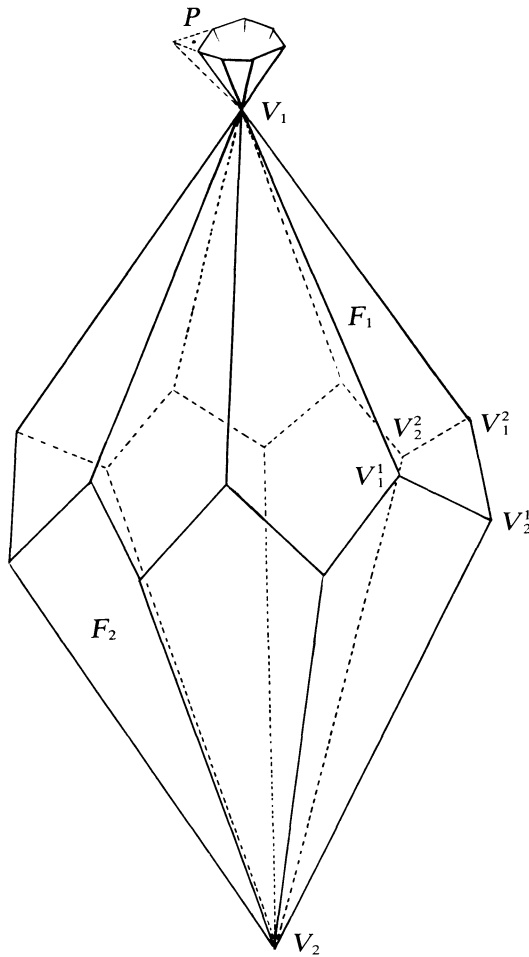


FIG. 2

opposite orientation relative to the z -axis and which join along a serrated zig-zag path, somewhat like a Japanese lantern without pleats. (See Figure 2, where some of the vertical dimensions have been exaggerated for clarity).

Visibility properties of K . In the following, we refer to external visibility relative to K simply as visibility. We claim first that if M is any set of $4n - 1$ vertices of K , then there is some point in space which can see each vertex in M . Obviously, if the vertex excluded from M is V_1 , then an appropriate point of visibility for M can be found on the z -axis by choosing $(0, 0, u)$ where $u < -h$, and similarly for V_2 . Hence assume that the vertex excluded from M is V_2^1 . (Because of symmetry our argument will hold for each of the remaining vertices). Let F_1 be the face

of K determined by V_1^1, V_2^1, V_1^2 , and V_1 . Consider the intersections of the plane $z = z_0 > h$ with the planes of the faces of K which pass through V_1 . We can find a point P in this plane, as in Figure 2, such that P and $\text{int } K$ lie in the same open half space bounded by the plane of F_1 , yet such that each of the other planes of the upper faces of K strictly separates P from $\text{int } K$. Thus P can see every point on each of the upper quadrilateral faces of K except F_1 , and so P can see every vertex of K except for V_2^1 and possibly V_2 . Now note that since the faces of K are parallel in opposite pairs, there is some face F_2 containing V_2 which is parallel to F_1 . We select a point P' on the ray $\overrightarrow{V_1 P}$ sufficiently far from V_1 so that the plane of face F_2 strictly separates P' from $\text{int } K$. This point P' can see each vertex of K except V_2^1 .

There is no point which can see all of the vertices of K simultaneously. To show this it is convenient to divide the space E^3 into three regions separated by the parallel planes $z = h$ and $z = -h$, where h and $-h$ are the z coordinates of V_1 and V_2 respectively. In the region $z > h$, consider a plane $z = z_0$, where z_0 is an arbitrary number greater than h . The planes of the faces of K containing V_1 will intersect this plane in a $(2n - 1)$ -gon. (In Figure 3, this is illustrated for $n = 4$. The extensions of the sides of the heptagon thus obtained are not shown, but the point P used earlier is shown for reference.) The planes of the faces which contain V_2 will intersect the plane $z = z_0$ in a larger $(2n - 1)$ -gon with sides parallel to those of the first $(2n - 1)$ -gon. Clearly any point inside the larger $(2n - 1)$ -gon cannot see V_2 . So let Q be a point outside the larger $(2n - 1)$ -gon. In this case a vertex V_2^i exists such that Q and K lie on the same side of each of the three faces of K which determine V_2^i , and hence Q cannot see V_2^i . In Figure 3, the vertex V_2^i is the intersection of the three planes indicated by the three arrows, and the point Q illustrated cannot see V_2^i because of the reasons stated above.

For points in the region $z < -h$, exactly the same type of argument as above applies. For points in the region $-h \leq z \leq h$, we take again a cross section $z = z_0$, where $-h \leq z_0 \leq h$, and apply a similar type of reasoning, which differs very little from the preceding cases. This completes the proof.

It is interesting to note the following fact (we continue to refer to external visibility relative to K simply as visibility). There exists a convex body K in E^3 and a closed set $T \subset E^3$ containing $4n$ points (where n may be arbitrarily large) such that every $4n - 1$ points of T can see a common point of $\text{bd } K$, yet all the points of T cannot see a common point of $\text{bd } K$. To see this, let K be the polyhedron constructed above. We have already seen that there exist $4n$ points in E^3 , each of which can see all but one of the vertices of K . If we take T to be the set containing these $4n$ points, this implies directly that every $4n - 1$ points of T can see a common vertex of K . Yet if all of T could see a common point of

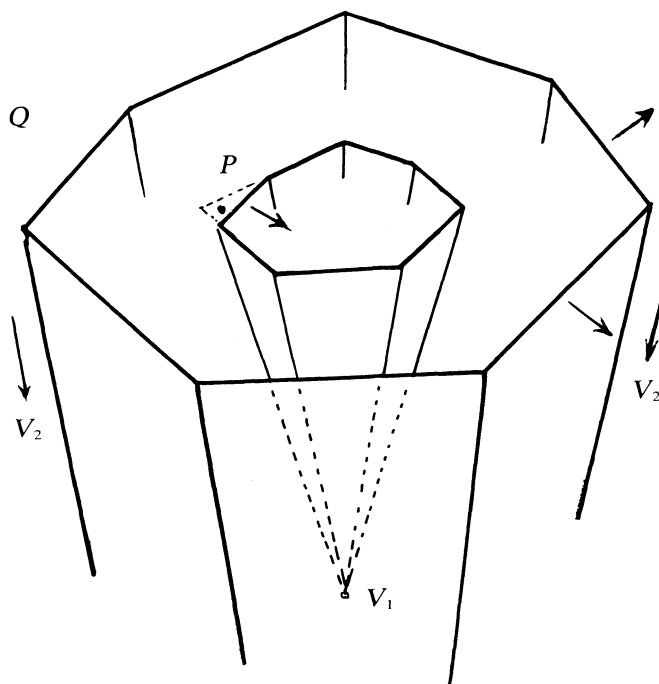


FIG. 3

bd K , then it is easy to see that all of T could see some common vertex V of K . But since some point of T , by construction of T , can see all the vertices of K other than V , this point of T could then see all the vertices of K . However, K was constructed so that this is impossible. Hence, no Helly number exists for this type of external visibility in E^3 , which answers a question raised in [1].

It is also worth mentioning that the essential properties which make the polyhedron K a counterexample in E^3 can be extended to give corresponding counterexamples in E^r , where $r > 3$. Define the convex body in E^r to be the Cartesian product of K with an appropriate number of copies of the interval $[-1, 1]$, and define the set of points in bd K as those whose first three coordinates correspond to vertices of K , and whose remaining coordinates are zero. (Note that these points are no longer vertices of the convex body.)

REFERENCE

1. F. A. Valentine, *Visible shorelines*, Amer. Math. Monthly, 77 (1970), 146-152.

Received February 27, 1976.

CALIFORNIA STATE UNIVERSITY, FULLERTON
AND
UNIVERSITY OF CALIFORNIA, LOS ANGELES