

**Pacific  
Journal of  
Mathematics**

VOLUME CXLIV

1990

# PACIFIC JOURNAL OF MATHEMATICS

## EDITORS

V. S. VARADARAJAN

(Managing Editor)

University of California

Los Angeles, CA 90024-1555-05

HERBERT CLEMENS

University of Utah

Salt Lake City, UT 84112

THOMAS ENRIGHT

University of California, San Diego

La Jolla, CA 92093

R. FINN

Stanford University

Stanford, CA 94305

HERMANN FLASCHKA

University of Arizona

Tucson, AZ 85721

VAUGHAN F. R. JONES

University of California

Berkeley, CA 94720

STEVEN KERCKHOFF

Stanford University

Stanford, CA 94305

C. C. MOORE

University of California

Berkeley, CA 94720

MARTIN SCHARLEMANN

University of California

Santa Barbara, CA 93106

HAROLD STARK

University of California, San Diego

La Jolla, CA 92093

## ASSOCIATE EDITORS

R. ARENS

E. F. BECKENBACH

(1906–1982)

B. H. NEUMANN

F. WOLF

(1904–1989)

K. YOSHIDA

## SUPPORTING INSTITUTIONS

UNIVERSITY OF ARIZONA

UNIVERSITY OF BRITISH COLUMBIA

CALIFORNIA INSTITUTE OF TECHNOLOGY

UNIVERSITY OF CALIFORNIA

MONTANA STATE UNIVERSITY

UNIVERSITY OF NEVADA, RENO

NEW MEXICO STATE UNIVERSITY

OREGON STATE UNIVERSITY

UNIVERSITY OF OREGON

UNIVERSITY OF SOUTHERN CALIFORNIA

STANFORD UNIVERSITY

UNIVERSITY OF HAWAII

UNIVERSITY OF TOKYO

UNIVERSITY OF UTAH

WASHINGTON STATE UNIVERSITY

UNIVERSITY OF WASHINGTON

# CONTENTS

## A – ALGEBRA AND NUMBER THEORY

G. E. Andrews and D. M. Jackson, <i>An algebraically derived <math>q</math>-analogue of a character sum associated with a class of semiregular permutations</i> .....	207
S. Comalada, <i>Elliptic curves with trivial conductor over quadratic fields</i> .....	237
P. M. Higgins, <i>A short proof of Isbell's zigzag theorem</i> .....	47
D. M. Jackson, See G. E. Andrews and D. M. Jackson	
A. Ohbuchi, <i>On the projective normality of some varieties of degree 5</i> .....	313
J. S. Okon and L. J. Ratliff, Jr., <i>Reductions of filtrations</i> .....	137
L. J. Ratliff, Jr., See J. S. Okon and L. J. Ratliff, Jr.	
G. Wagner, <i>On means of distances on the surface of a sphere (lower bounds)</i> .....	389

## B – ANALYSIS

W. Chojnacki, <i>On some totally ergodic functions</i> .....	1
K. El Hussein, <i>Resolubilité semi-globale des opérateurs différentiels invariants sur les groupes de déplacements</i> .....	259
L. Janicka, <i>Radon-Nikodym problem for the variation of a vector measure</i> .....	293
H. H. Johnson, <i>The absolute invariance of conservation laws</i> ...	51
A. V. Lair, <i>Uniqueness for a nonlinear abstract Cauchy problem</i>	105
J. S. Spielberg, <i>Diagonal states on <math>O_2</math></i> .....	361
S. A. Tozoni, <i>Vector singular integral operators on a local field</i> .	161

## C – APPLIED MATHEMATICS

H. L. Smith, <i>A discrete Lyapunov function for a class of linear differential equations</i> .....	345
---	-----

## D – GEOMETRY

F. Bardelli and A. Del Centina, <i>The moduli space of genus four double covers of elliptic curves is rational</i> . . . . .	219
Y. D. Chai, <i>An estimate of the volume of a compact set in terms of its integral of mean curvature</i> . . . . .	229
A. Del Centina, See F. Bardelli and A. Del Centina	
K. A. Furio, See J. B. Little and K. A. Furio	
E. Kann, <i>Infinitesimal rigidity of almost-convex oriented polyhedra of arbitrary Euler characteristic</i> . . . . .	71
J. B. Little and K. A. Furio, <i>On the distribution of Weierstrass points on irreducible rational nodal curves</i> . . . . .	131
T. I. Vogel, <i>A note on the sessile drop</i> . . . . .	383

## E – LOGIC AND FOUNDATIONS

J. Pawlikowski, <i>Small subset of the plane which almost contains almost all Borel functions</i> . . . . .	155
---	-----

## G – TOPOLOGY

S. R. Costenoble, S. Waner, and G. S. Wells, <i>Approximating equivariant mapping spaces</i> . . . . .	15
D. M. Goldschmidt, <i>Classical link invariants and the Burau representation</i> . . . . .	277
W. Marzantowicz, <i>An almost classification of compact Lie groups with Borsuk-Ulam properties</i> . . . . .	299
K. Ohshika, <i>Minimal measured laminations in geometric 3-manifolds</i> . . . . .	327
J. B. Wagoner, <i>Triangle identities and symmetries of a subshift of finite type</i> . . . . .	181
S. Waner, See S. R. Costenoble, S. Waner, and G. S. Wells	
G. S. Wells, See S. R. Costenoble, S. Waner, and G. S. Wells	

# Pacific Journal of Mathematics

<b>W. Chojnacki</b> , On some totally ergodic functions . . . . .	1
<b>S. R. Costenoble, S. Waner, and G. S. Wells</b> , Approximating equivariant mapping spaces . . . . .	15
<b>P. M. Higgins</b> , A short proof of Isbell's zigzag theorem . . . . .	47
<b>H. H. Johnson</b> , The absolute invariance of conservation laws . . . . .	51
<b>E. Kann</b> , Infinitesimal rigidity of almost-convex oriented polyhedra of arbitrary Euler characteristic . . . . .	71
<b>A. V. Lair</b> , Uniqueness for a nonlinear abstract Cauchy problem . . . . .	105
<b>J. B. Little and K. A. Furio</b> , On the distribution of Weierstrass points on irreducible rational nodal curves . . . . .	131
<b>J. S. Okon and L. J. Ratliff, Jr.</b> , Reductions of filtrations . . . . .	137
<b>J. Pawlikowski</b> , Small subset of the plane which almost contains almost all Borel functions . . . . .	155
<b>S. A. Tozoni</b> , Vector singular integral operators on a local field . . . . .	161
<b>J. B. Wagoner</b> , Triangle identities and symmetries of a subshift of finite type . .	181

*Subject listing on back cover*

# PACIFIC JOURNAL OF MATHEMATICS

## EDITORS

V. S. VARADARAJAN  
(Managing Editor)  
University of California  
Los Angeles, CA 90024-1555-05

HERBERT CLEMENS  
University of Utah  
Salt Lake City, UT 84112

THOMAS ENRIGHT  
University of California, San Diego  
La Jolla, CA 92093

R. FINN  
Stanford University  
Stanford, CA 94305

HERMANN FLASCHKA  
University of Arizona  
Tucson, AZ 85721

VAUGHAN F. R. JONES  
University of California  
Berkeley, CA 94720

STEVEN KERCKHOFF  
Stanford University  
Stanford, CA 94305

ROBION KIRBY  
University of California  
Berkeley, CA 94720

C. C. MOORE  
University of California  
Berkeley, CA 94720

HAROLD STARK  
University of California, San Diego  
La Jolla, CA 92093

## ASSOCIATE EDITORS

R. ARENS

E. F. BECKENBACH  
(1906–1982)

B. H. NEUMANN

F. WOLF  
(1904–1989)

K. YOSHIDA

## SUPPORTING INSTITUTIONS

UNIVERSITY OF ARIZONA  
UNIVERSITY OF BRITISH COLUMBIA  
CALIFORNIA INSTITUTE OF TECHNOLOGY  
UNIVERSITY OF CALIFORNIA  
MONTANA STATE UNIVERSITY  
UNIVERSITY OF NEVADA, RENO  
NEW MEXICO STATE UNIVERSITY  
OREGON STATE UNIVERSITY

UNIVERSITY OF OREGON  
UNIVERSITY OF SOUTHERN CALIFORNIA  
STANFORD UNIVERSITY  
UNIVERSITY OF HAWAII  
UNIVERSITY OF TOKYO  
UNIVERSITY OF UTAH  
WASHINGTON STATE UNIVERSITY  
UNIVERSITY OF WASHINGTON

---

The Supporting Institutions listed above contribute to the cost of publication of this Journal, but they are not owners or publishers and have no responsibility for its content or policies.

---

Mathematical papers intended for publication in the *Pacific Journal of Mathematics* should be in typed form or offset-reproduced (not dittoed), double spaced with large margins. Please do not use built up fractions in the text of the manuscript. However, you may use them in the displayed equations. Underline Greek letters in red, German in green, and script in blue. The first paragraph must be capable of being used separately as a synopsis of the entire paper. In particular it should contain no bibliographic references. Please propose a heading for the odd numbered pages of less than 35 characters. Manuscripts, in triplicate, may be sent to any one of the editors. Please classify according to the 1980 *Mathematics Subject Classification* (1985 Revision) scheme which can be found in the December index volumes of *Mathematical Reviews*. Supply name and address of author to whom proofs should be sent. All other communications should be addressed to the managing editor, or Elaine Barth, University of California, Los Angeles, California 90024-1555-05.

There are page-charges associated with articles appearing in the Pacific Journal of Mathematics. These charges are expected to be paid by the author's University, Government Agency or Company. If the author or authors do not have access to such Institutional support these charges are waived. Single authors will receive 50 free reprints; joint authors will receive a total of 100 free reprints. Additional copies may be obtained at cost in multiples of 50.

---

The *Pacific Journal of Mathematics* (ISSN 0030-8730) is published monthly as of January 1966. Regular subscription rate: \$190.00 a year (6 Vols., 12 issues). Special rate: \$95.00 a year to individual members of supporting institutions.

Subscriptions, orders for numbers issued in the last three calendar years, and changes of address should be sent to Pacific Journal of Mathematics, P.O. Box 969, Carmel Valley, CA 93924, U.S.A. Old back numbers obtainable from Kraus Periodicals Co., Route 100, Millwood, NY 10546.

---

The Pacific Journal of Mathematics at P.O. Box 969, Carmel Valley, CA 93924 (ISSN 0030-8730) is published monthly. Second-class postage paid at Carmel Valley, California 93924, and additional mailing offices. Postmaster: send address changes to Pacific Journal of Mathematics, P.O. Box 969, Carmel Valley, CA 93924.

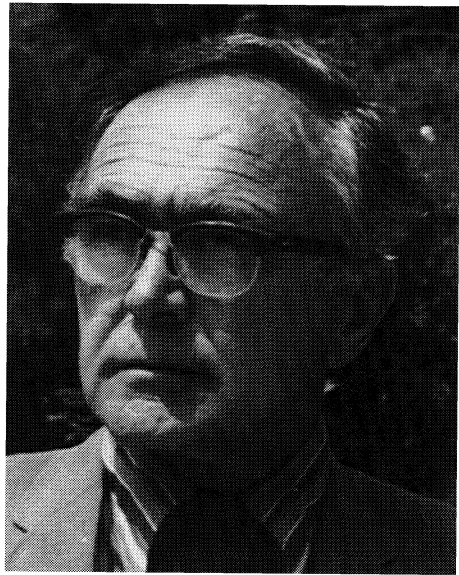
PUBLISHED BY PACIFIC JOURNAL OF MATHEMATICS, A NON-PROFIT CORPORATION

Copyright © 1990 by Pacific Journal of Mathematics

This volume is dedicated  
to the founders  
of the Pacific Journal of Mathematics  
**Edwin F. Beckenbach**  
and  
**Frantisek Wolf**



Edwin F. Beckenbach  
(1906–1982)



Frantisek Wolf  
(1904–1989)

