

ISSN 0030-6126

OSAKA JOURNAL OF MATHEMATICS

EDITED BY

M. IKAWA

N. IKEDA

T. IKEGAMI

T. KAMAE

A. KAWAUCHI

M. MIYANISHI

H. TANABE

WITH THE COOPERATION OF

S. ARAKI

M. HARADA

T. IBUKIYAMA

K. KAWAKUBO

N. KAWANAKA

T. MABUCHI

M. MORIMOTO

M. NAMBA

T. NISHITANI

H. OZEKI

M. TAKEUCHI

J. TAO

Y. TSUSHIMA

S. USUI

T. WATANABE

Y. YAMAMOTO

Volume 29

1992

PUBLISHED JOINTLY BY THE

DEPARTMENTS OF MATHEMATICS

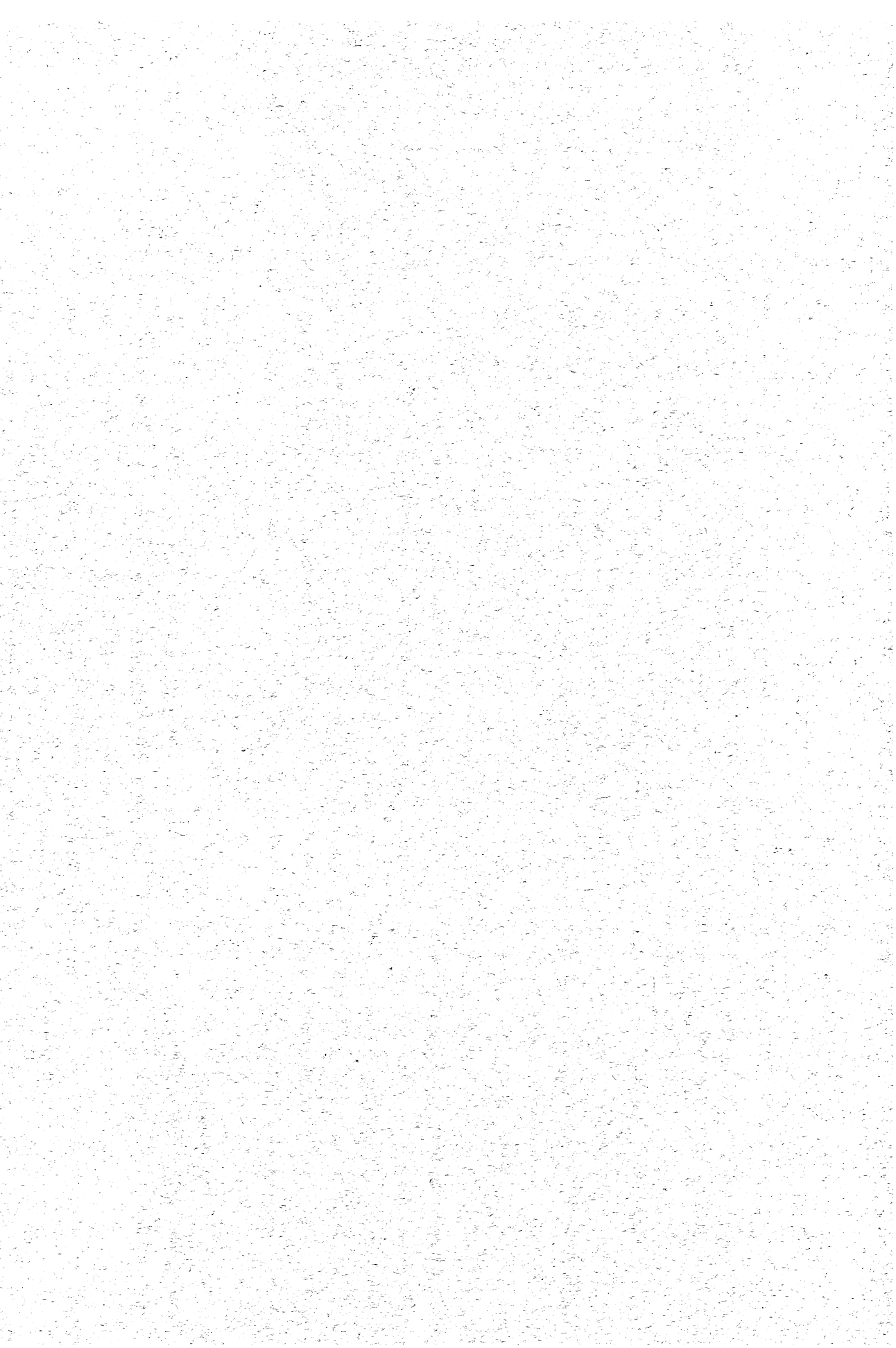
OSAKA UNIVERSITY AND OSAKA CITY UNIVERSITY

INDEX

AL-HUZALI, A.H., JAIN, S.K. and LÓPEZ-PERMOUTH, S.R.: Weakly-injective rings and modules.	75
ALBEVERIO, S. and MA, Z.: Additive functionals, nowhere Radon and Kato class smooth measures associated with Dirichlet forms.	247
BERNARDI, E. and NISHITANI, T.: Remarks on symmetrization of 2×2 systems and the characteristic manifolds.	129
BERRICK, A.J.: Homologous fibres and total spaces.	339
ENGLER, H. and HETZER, G.: Convergence to equilibria for a class of reaction-diffusion systems.	471
GODA, H.: Heegaard splitting for sutured manifolds and Murasugi sum.	21
HANAKI, A. and HIDA, A.: A remark on M_p -groups.	71
HANG, C.-W., MIYANISHI, M., NISHIDA, K. and ZHANG, D.-Q.: On algebras which resemble the local Weyl algebra.	393
HARADA, M.: Note on almost relative projectives and almost relative injectives.	435
HETZER, G. and ENGLER, H.: Convergence to equilibria for a class of reaction-diffusion systems.	471
HIDA, A. and HANAKI, A.: A remark on M_p -groups.	71
HOSHINO, M.: On Lambek torsion theories.	447
IHARA, Y. and KANEKO, M.: Pro- l pure braid groups of Riemann surfaces and Galois representations.	1
IIDA, M., YAMADA, Y. and YOTSUTANI, S.: Asymptotic behavior of solutions for a mathematical model on chemical interfacial reactions.	483
IKAWA, M.: Singular perturbation of symbolic flows and poles of the zeta functions. addendum.	161
JAIN, S.K., LÓPEZ-PERMOUTH, S.R. and AL-HUZALI A.H.: Weakly-injective rings and modules.	75
KAISER, U.: Homology boundary links and fusion constructions.	573
KANEKO, M. and IHARA, Y.: Pro- l pure braid groups of Riemann surfaces and Galois representations.	1
KANENOBU, T.: Genus and Kauffman polynomial of a 2-bridge knot.	635
KANZAKI, T.: r -fold ζ -skew-symmetric multilinear forms.	735
KASUE, A. and WASHIO, T.: Errata to "Growth of equivariant harmonic maps and harmonic morphisms".	419

KAWAUCHI, A.: Almost identical imitations of $(3, 1)$ -dimensional manifold pairs and the branched coverings.	299
KIM, S.S.: Divisibility conditions on signatures of fixed point sets.	387
KOBAYASHI, M.: Cut-and-pastes of incompressible surfaces in 3-manifolds.	617
KOBAYASHI, T.: A construction of 3-manifolds whose homeomorphism classes of Heegaard splittings have polynomial growth.	653
KOISO, N.: Elasticae in a riemannian submanifold.	539
KOMATSU, K.: Boundary link is trivial if the Lusternik-Schnirelmann category of its complement is one.	329
KONO, S.: Stable homotopy types of stunted lens spaces mod 4.	697
KUWAE, K.: A characterization of the closable parts of pre-Dirichlet forms by hitting distributions.	771
LÓPEZ-PERMOUTH, S.R., AL-HUZALI, A.H. and JAIN, S.K.: Weakly-injective rings and modules.	75
MA, Z. and ALBEVERIO, S.: Additive functionals, nowhere Radon and Kato class smooth measures associated with Dirichlet forms.	247
MANABE, S.: Large deviation for a class of current-valued processes.	89
MARUO, K.: On the existence of solutions to wave integrodifferential equations with subdifferential operators.	455
MIYANISHI, M., NISHIDA, K., ZHANG, D.-Q. and HAND, C.-W.: On algebras which resemble the local Weyl algebra.	393
MORI, M.: Fredholm determinant for piecewise monotonic transformations.	497
MURABAYASHI, N.: On normal forms of modular curves of genus 2.	405
MURAKAIM, H., OHTSUKI, T. and OKADA, M.: Invariants of three-manifolds derived from linking matrices of framed links.	545
NAGASAKI, I.: Linearity of homotopy representations.	595
NAKANO, T.: On quasi-homogeneous fourfolds of $SL(3)$	719
NISHIDA, K., ZHAND, D.-Q., HANG, C.-W and MIYANISHI, M.: On algebras which resemble the local Weyl algebra.	393
NISHIMURA, T.: Exterior product bundle over complex abstract Wiener space.	233
NISHIO, M.: Uniqueness of positive solutions of the heat equation.	531
NISHITANI, T. and BERNARDI, E.: Remarks on symmetrization of 2×2 systems and the characteristic manifolds.	129
OHTSUKI, T., OKADA, M. and MURAKAMI, H.: Invariants of three-manifolds derived from linking matrices of framed links.	545

OKADA, M., MURAKAMI, H. and OHTSUKI, T.: Invariants of three-manifolds derived from linking matrices of framed links.	545
OSHIMA, Y.: Some properties of Markov processes associated with time dependent Dirichlet forms.	103
OZAWA, S.: Singular variation of domain and spectra of the Laplacian with small Robin conditional boundary I.	837
PÉRAIRE, Y.: Théorie relative des ensembles internés.	267
SANKARAN, G.K.: Remarks on open surfaces.	63
SENBA, T.: On the large time behavior of solutions for some degenerate quasilinear parabolic systems.	851
SHEU, T.-W.: Spectral properties of differential operators related to stochastic oscillatory integrals.	203
SHIGA, T.: Ergodic theorems and exponential decay of sample paths for certain interacting diffusion systems.	789
SHIMA, T.: Lifschitz tails for random Schrödinger operators on nested fractals.	749
SOGA, H.: Representation of the scattering kernel for the elastic wave equation and singularities of the back-scattering	809
SUETAKE, C.: A remark on finite point transitive affine planes with two orbits on l_∞	433
SUMI, T.: Z/kZ -finiteness for certain S_1 -spaces.	607
TAMURA, H.: Spectral and scattering theory for 3-particle Hamiltonian with stark effect: asymptotic completeness.	135
WAKUI, M.: On Dijkgraaf-Witten invariant for 3-manifolds.	675
WASHIO, T. and KASUE, A.: Errata to "Growth of equivariant harmonic maps and harmonic morphisms".	419
YAMADA, Y., YOTSUTANI, S. and IIDA, M.: Asymptotic behavior of solutions for a mathematical model on chemical interfacial reactions.	483
YAMAGUCHI, A.: The structure of the cohomology of Morava stabilizer algebra $S(3)$	347
YAMAZAKI, M.: The essential self-adjointness of pseudodifferential operators associated with non-elliptic Weyl symbols with large potentials.	175
YOSHIDA, T.: P. Hall's strange formula for abelian p -groups.	421
YOSIMURA, Z.: E_* -injective spectra and injective E_*E -comodules.	41
— — — —: The K_* -localizations of Wood and Anderson spectra and the real projective spaces.	361
YOTSUTANI, S., IIDA, M. and YAMADA, Y.: Asymptotic behavior of solutions for a mathematical model on chemical interfacial reactions.	483
ZHANG, D.-Q., HANG, C.-W., MIYANISHI, M. and NISHIDA, K.: On algebras which resemble the local Weyl algebra.	393



CONTENTS

KOBAYASHI, T.: A construction of 3-manifolds whose homeomorphism classes of Heegaard splittings have polynomial growth.	653
WAKUI, M.: On Dijkgraaf-Witten invariant for 3-manifolds	675
KONO, S.: Stable homotopy types of stunted lens spaces mod 4.	697
NAKANO, T.: On quasi-homogeneous fourfolds of $SL(3)$	719
KANZAKI, T.: r -fold ζ -skew-symmetric multilinear forms.	735
SHIMA, T.: Lifshitz tails for random Schrödinger operators on nested fractals.	749
KUWAE, K.: A characterization of the closable parts of pre-Dirichlet forms by hitting distributions.	771
SHIGA, T.: Ergodic theorems and exponential decay of sample paths for certain interacting diffusion systems.	789
SOGA, H.: Representation of the scattering kernel for the elastic wave equation and singularities of the back-scattering.	809
OZAWA, S.: Singular variation of domain and spectra of the Laplacian with small Robin conditional boundary I.	837
SENBA, T.: On the large time behavior of solutions for some degenerate quasilinear parabolic systems.....	851