

ISSN 0030-6126

OSAKA JOURNAL OF MATHEMATICS

EDITED BY

S. ARAKI	M. HARADA	N. IKEDA
M. IKAWA	M. MORIMOTO	S. MURAKAMI

WITH THE COOPERATION OF

M. FUKUSHIMA	T. IKEGAMI	T. KAMAE
K. KAWAKUBO	N. KAWANAKA	A. KAWAUCHI
M. MIYANISHI	M. NAMBA	H. OZEKI
S. SATO	M. TAKEUCHI	H. TANABE
J. TAO	Y. TSUSHIMA	T. WATANABE
	Y. YAMAMOTO	

Volume 26

1989

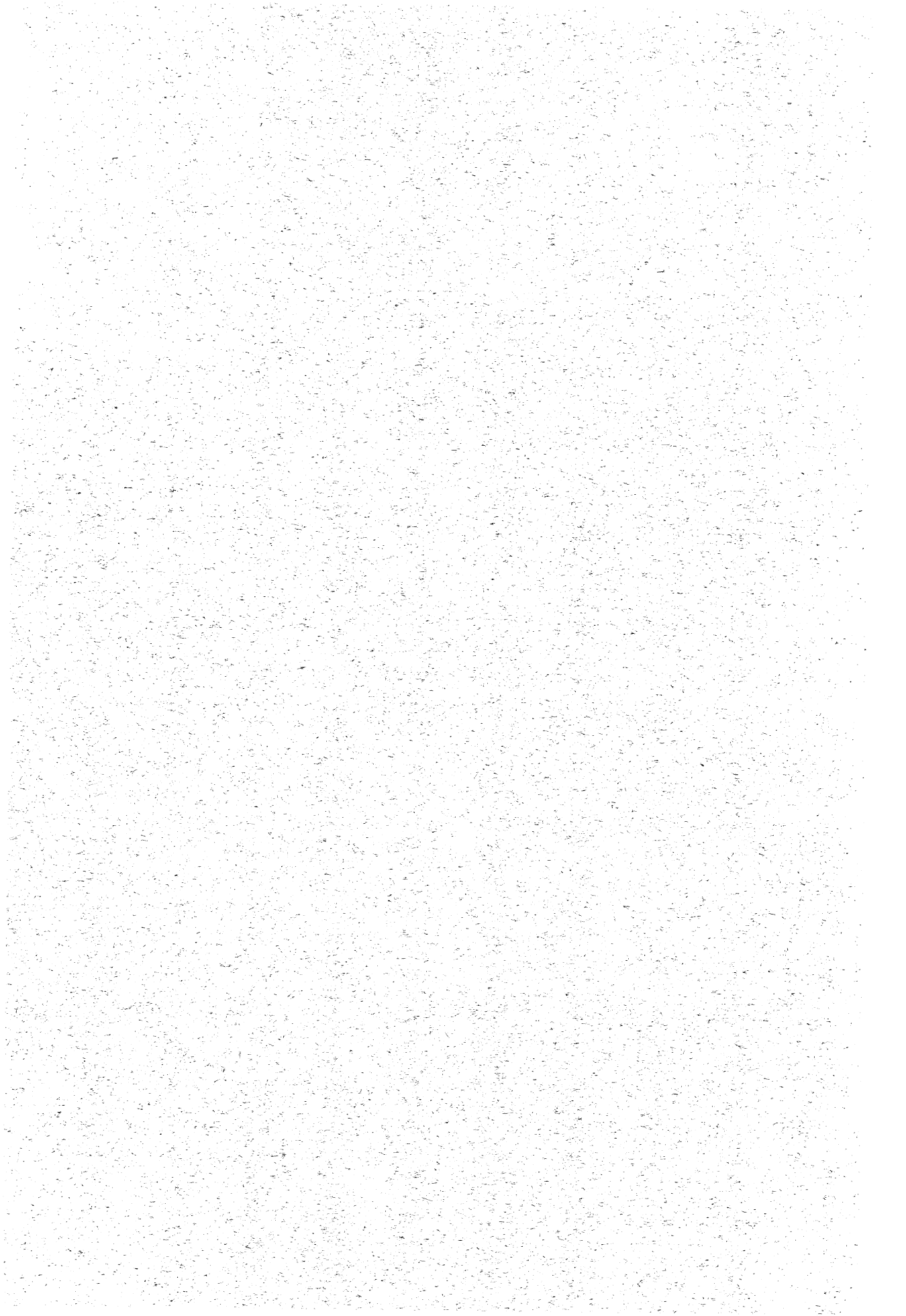
PUBLISHED JOINTLY BY THE
DEPARTMENTS OF MATHEMATICS
OSAKA UNIVERSITY AND OSAKA CITY UNIVERSITY

INDEX

ASHINO, R.: On the admissibility of singular perturbations in Cauchy problems.	387
———: The reducibility of the boundary conditions in the one-parameter family of elliptic linear boundary value problems II.	535
BABA, Y.: Note on almost M -injectives.	687
DATEYAMA, M.: Homeomorphisms with Markov partitions.	411
DELANOË, P.: Remarques sur les varétés localement hessiennes.	65
FUJII, J.: On the smallest pairwise sufficient subfield in the majorized statistical experiment.	429
GIBSON, G. J.: Seminormality and F-purity in local rings.	245
GOODEARL, K.R. and MONCASI, J.: Cancellation of finitely generated modules over regular rings.	679
GUIDETTI, D.: On certain semigroups of linear operators and generalized Cauchy problem.	89
HALTER-KOCH, F. and ISHII, N.: Ring class fields modulo 8 of $\mathbf{Q}(\sqrt{-m})$ and the quartic character of units of $\mathbf{Q}(\sqrt{m})$ for $m \equiv 1 \pmod{8}$	625
HARADA, M. and MABUCHI, T.: On almost M -projectives.	837
HIGUCHI, Y.: A remark on the percolation for the 2D Ising model.	207
HOSHINO, M.: On dominant dimension of noetherian rings.	275
INOUE, T.: Integral formulas for harmonic functions associated with boundaries of a bounded symmetric domain.	527
ISOZAKI, H.: Singular limits for the compressible Euler equation in an exterior domain, II-bodies in a uniform flow.	399
ITO, S.: Algorithms with mediant convergents and their metrical theory.	557
JACOB, N.: A Gårding inequality for certain anisotropic pseudo differential operators with non-smooth symbols.	857
JOHNSON, N.L.: Semifield planes of characteristic p admitting p -primitive Baer collineations.	281
KAMADA, S.: Non-orientable surfaces in 4-space.	367
KANEKO, M.: Supersingular j -invariants as singular moduli mod p	849
KANEMITSU, M. and YOSHIDA, K.: On embedded primary components. ...	665
KANENOBU, T.: Examples on polynomial invariants of knots and links II.	465
KAWATA, S.: Module correspondence in Auslander-Reiten quivers for finite groups.	671
KAWAUCHI, A.: An imitation theory of manifolds.	447
———: Almost identical imitations of $(3, 1)$ -dimensional manifold pairs.	743

KOBAYASHI, M.: Orientation reversing involutions on closed 3-manifolds.	347
KOBAYASHI, S.: Completions and maximal quotient rings over regular rings.	225
KOBAYASHI, T.: Fibered links and unknotting operations.	699
KOITABASHI, M.: Some remarks on affine homogeneous spaces.	229
KÔNO, S. and TAMAMURA, A.: J-groups of suspensions of stunted lens spaces mod 4.	319
LAITINEN, E. and LÜCK, W.: Equivariant Lefschetz classes.	491
LANTERI, A., PALLESCHI, M. and SOMMESE, A.J.: Very ampleness of $K_x \otimes \mathcal{L}^{\dim X}$ for ample and spanned line bundles \mathcal{L}	647
MANABE, S. and OCHI, Y.: The central limit theorem for current-valued processes induced by geodesic flows.	191
MATSUMOTO, H.: Coalescing stochastic flows on the real line.	139
MINAMI, H.: The real K -groups of $SO(n)$ for $n \equiv 2 \pmod{4}$	299
MORITA, T.: A generalized local limit theorem for Lasota-Yorke transformations.	579
MOUNTFORD, T.S.: An extension of a result of Komatsu and Takashima.	597
MURAKAMI, J.: The parallel version of polynomial invariants of links.	1
NISHITANI, T.: Une condition nécessaire pour des systèmes hyperboliques.	71
NITTA, T.: Moduli spaces of Yang-Mills connections over quaternionic Kähler manifolds.	287
ŌSHIMA, H.: Codegree of simple Lie groups.	759
PHAN, D.: Right perfect rings with the extending property on finitely generated free modules.	265
POPOV, G. and RANGELOV, Ts.: Exponential growth of the local energy for moving obstacles.	881
SHIBUYA, T.: The Arf invariant of proper links in solid tori.	483
SHIGEKAWA, I., UEKI, N. and WATANABE, S.: A probabilistic proof of the Gauss-Bonnet-Chern theorem for manifolds with boundary.	897
TAKASHIMA, K.: Sample path properties of ergodic self-similar processes.	159
TAKEDA, M.: On a martingale method for symmetric diffusion processes and its applications.	605
TAMBARA, D.: Homological properties of the endomorphism rings of certain permutation modules.	807
TAMURA, H.: Asymptotic distribution of eigenvalues for Schrödinger operators with homogeneous magnetic fields, II.	119
TANAKA, M.: On character correspondences in π -separable groups.	253

TANIGUCHI, S.: Explosion problem for holomorphic diffusion processes and its applications.	931
TERAGAITO, M.: Fibered 2-knots and lens spaces.	57
———: Addendum to “Fibered 2-knots and lens spaces”.	953
UCHIDA, F.: On smooth $SO_0(p, q)$ -actions on S^{p+q-1}	775
WATANABE, A.: Note on a p -block of a finite group with abelian defect group.	829
YOSHIZAWA, M.: Graphs with given group.	789



CONTENTS

KOBAYASHI, T.: Fibered links and unknotting operations.	699
KAWAUCHI, A.: Almost identical imitations of $(3, 1)$ -dimensional manifold pairs.	743
ŌSHIMA, H.: Codegree of simple Lie groups.	759
UCHIDA, F.: On smooth $SO_0(p, q)$ -actions on S^{p+q-1}	775
YOSHIZAWA, M.: Graphs with given group.	789
TAMBARA, D.: Homological properties of the endomorphism rings of certain permutation modules.	807
WATANABE, A.: Note on a p -block of a finite group with abelian defect group.	829
HARADA, M. and MABUCHI, T.: On almost M -projectives.	837
KANEKO, M.: Supersingular j -invariants as singular moduli mod p	849
JACOB, N.: A Gårding inequality for certain anisotropic pseudo differential operators with non-smooth symbols.	857
POPOV, G. and RANGELOV, Ts.: Exponential growth of the local energy for moving obstacles.	881
SHIGEKAWA, I., UEKI, N. and WATANABE, S.: A probabilistic proof of the Gauss-Bonnet-Chern theorem for manifolds with boundary.	897
TANIGUCHI, S.: Explosion problem for holomorphic diffusion processes and its applications.	931
TERAGAITO, M.: Addendum to "Fibered 2-knots and lens spaces".	953