

ISSN 0030-6126

# OSAKA JOURNAL OF MATHEMATICS

EDITED BY

S. ARAKI            M. HARADA  
N. IKEDA            T. KAMAE            S. MURAKAMI

WITH THE COOPERATION OF

|              |              |             |
|--------------|--------------|-------------|
| M. FUKUSHIMA | M. IKAWA     | T. IKEGAMI  |
| K. ISHII     | M. MIYANISHI | H. MORIMOTO |
| H. NAGAO     | M. NAKAOKA   | N. NINOMIYA |
| H. OZEKI     | K. SHIBATA   | M. TAKEUCHI |
| H. TANABE    | J. TAO       | Y. TSUSHIMA |
| T. WATANABE  | Y. YAMAMOTO  |             |

Volume 24

1987

PUBLISHED JOINTLY BY THE  
DEPARTMENTS OF MATHEMATICS  
OSAKA UNIVERSITY AND OSAKA CITY UNIVERSITY



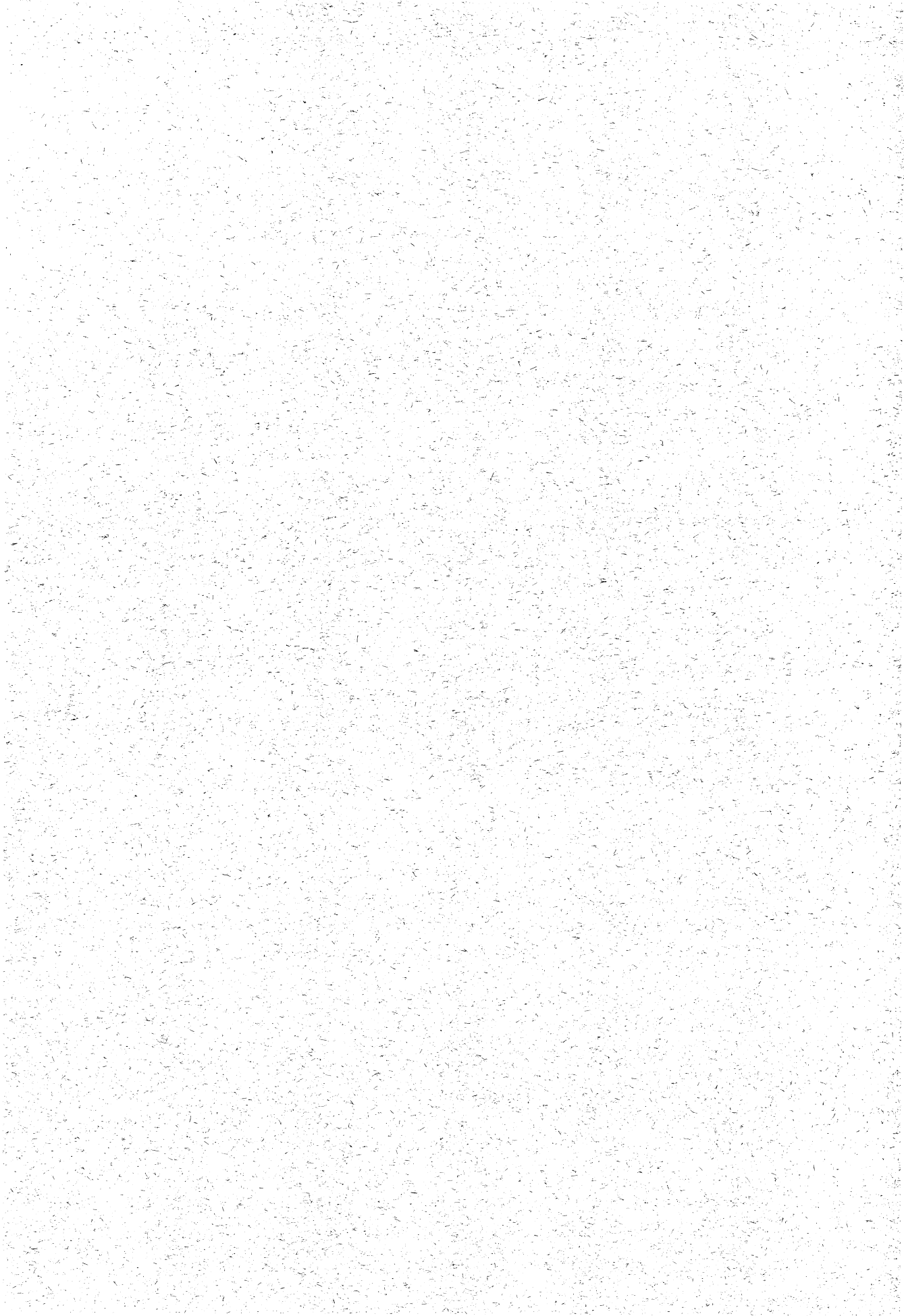
## INDEX

|   |     |
|---|-----|
| ASASHIBA, H.: On algebras of second local type, III. ....   | 107 |
| ASOH, T.: On smooth $SL(2, C)$ actions on 3-manifolds. ....   | 271 |
| BABA, Y. and HARADA, M.: Generalizations of Nakayama ring IV<br>(left serial rings with $(*, 1)$ . ....                   | 139 |
| FURUKAWA, T.: Isomorphism of group rings of infinite nilpotent<br>groups. ....  | 95  |
| HARADA, M.: Generalizations of Nakayama ring V (left serial rings<br>with $(*, 2)$ . ....                                 | 373 |
| ———: Generalizations of Nakayama ring VI (right US- $n$ rings;<br>$n=3, 4$ ). ....  | 785 |
| ——— and Baba, Y.: Generalizations of Nakayama ring IV (left<br>serial rings with $(*, 1)$ . ....                          | 139 |
| HAYASHI, K.: A topological invariant related to the number of or-<br>thogonal geodesic chords. ....                       | 263 |
| HIRAMINE, Y., MATSUMOTO, M. and OYAMA, T.: On some extension<br>of 1-spread sets. ....                                    | 123 |
| ICHINOSE, W.: The Cauchy problem for Schrödinger type equations<br>with variable coefficients. ....                       | 853 |
| JIMBO, M., MUKERJEE, R. and KAGEYAMA, S.: On cyclic semi-regular<br>group divisible designs. ....                         | 395 |
| KADO, J.: Pseudo-rank functions on skew group rings and on fixed<br>subrings of automorphisms of unit-regular rings. .... | 83  |
| KAGEYAMA, S., MUKERJEE, R. and JIMBO, M.: On cyclic semi-regular<br>group divisible designs. ....                         | 395 |
| KANEKO, H.: A stochastic resolution of a complex Monge-Ampère<br>equation on a negatively curved Kähler manifold. ....    | 307 |
| KASHIWARA, H.: Fonctions rationnelles de type $(0, 1)$ sur le plan pro-<br>jectif complexe. ....                          | 521 |
| KASUE, A. and SUGAHARA, K.: Gap theorems for certain submanifolds<br>of Euclidean spaces and hyperbolic space forms. .... | 679 |
| KIKUCHI, K.: Steady-state wave propagation problem in inhomogene-<br>ous anisotropic media including crystals. ....       | 605 |
| KIM, J.M.: Stochastic calculus related to non-symmetric Dirichlet<br>forms. ....  | 331 |
| KOBAYASHI, T.: Structures of full Haken manifolds. ....   | 173 |
| ———: Pseudo-Anosov homeomorphisms which extend to orienta-<br>tion reversing homeomorphisms of $S^3$ . ....               | 739 |
| KODAMA, A.: On the structure of a bounded domain with a special<br>boundary point, II. ....                               | 499 |

|   |     |
|---|-----|
| KOISO, N.: Yang-Mills connections and moduli space. ....  | 147 |
| KOMIYA, K.: The Lefschetz number for equivariant maps. ....   | 299 |
| KÔNO, S. and TAMAMURA, A.: $J$ -groups of the suspensions of the<br>stunted lens spaces mod $p$ . ....                              | 481 |
| KOOHARA, A.: Function-theoretic properties of solutions of semi-<br>linear $\bar{\partial}$ -equations —similarity principle—. .... | 817 |
| KUTAMI, M. and OSHIRO, K.: On projective modules over directly<br>finite regular rings satisfying the comparability axiom II. ....  | 465 |
| MA, H.: On some asymptotic properties of the solution for a stochas-<br>tic differential equation on Hilbert spaces. ....           | 321 |
| MABUCHI, T.: Some symplectic geometry on compact Kähler mani-<br>folds (I). ....  | 227 |
| ————: Einstein-Kähler forms, Futaki invariants and convex geo-<br>metry on toric Fano varieties. ....                               | 705 |
| MARUMOTO, Y.: Some higher dimensional knots. ....   | 759 |
| MATSUMOTO, M., HIRAMINE, Y. and OYAMA, T.: On some extension<br>of 1-spread sets. ....  | 123 |
| MORIMOTO, Y.: Hypoellipticity for infinitely degenerate elliptic op-<br>erators. ....   | 13  |
| ————: A criterion for hypoellipticity of second order differential<br>operators. ....   | 651 |
| MORITA, T.: A fluctuation theorem associated with Cauchy problems<br>for stationary random operators. ....                          | 887 |
| MUKERJEE, R., JIMBO, M. and KAGEYAMA, S.: On cyclic semi-regular<br>group divisible designs. ....                                   | 395 |
| MURAKAMI, J.: The Kauffman polynomial of links and representation<br>theory. ....   | 745 |
| NAGASAKI, I.: Homotopy representation groups and Swan subgroups. ....   | 253 |
| NAKAMOTO, T.: On prime right ideals of intermediate rings of a finite<br>normalizing extension. ....                                | 475 |
| NAKANISHI, Y. and SUZUKI, S.: On Fox's congruence classes of knots.<br>.....  | 217 |
| OKUYAMA, T. and TSUSHIMA, Y.: On the theorems of Gashütz and<br>Willems. ....   | 391 |
| OSHIRO, K. and KUTAMI, M.: On projective modules over directly<br>finite regular rings satisfying the comparability axiom II. ....  | 465 |
| OYAMA, T., HIRAMINE, Y. and MATSUMOTO, M.: On some extension<br>of 1-spread sets. ....  | 123 |
| PARK, D.G.: Regularity in time of the solution of parabolic initial-<br>boundary value problem in $L^1$ space. ....                 | 911 |
| POPOV, G.: Some estimates of Green's functions in the shadow. ....  | 1   |

|   |     |
|---|-----|
| SCHWARTZ, L.: <i>Correction to "Complements sur les martingales conformes"</i> . . . . .                                  | 677 |
| SHIGEKAWA, I.: Existence of invariant measures of diffusions on an abstract Wiener space. . . . .                         | 37  |
| SUGAHARA, K. and KASUE, A.: Gap theorems for certain submanifolds of Euclidean spaces and hyperbolic space forms. . . . . | 679 |
| SUGITANI, S.: Limit processes for the branching processes with the Perron-Frobenius root 1. . . . .                       | 579 |
| SUZUKI, S. and NAKANISHI, Y.: On Fox's congruence classes of knots. . . . .   | 217 |
| TAMAMURA, A. and KÔNO, S.: $J$ -groups of the suspensions of the stunted lens spaces mod $p$ . . . . .                    | 481 |
| TSUSHIMA, Y. and OKUYAMA, T.: On the theorems of Gsschütz and Willems. . . . .  | 391 |
| UNO, K.: On the sequences induced from Auslander-Reiten sequences. . . . .  | 409 |
| WILLEMS, W.: An upper bound for Loewy lengths of projective modules in $p$ -solvable groups. . . . .                      | 77  |
| WITTMAN, R.: A non-tangential limit theorem. . . . .  | 61  |
| YOSHIZAWA, M.: On some sharply $t$ -transitive sets. . . . .  | 461 |
| ZHANG, D.-Q.: On Iitaka surfaces. . . . .   | 417 |





## CONTENTS

|  |     |
|--|-----|
| KASUE, A. and SUGAHARA, K.: Gap theorems for certain submanifolds of Euclidean spaces and hyperbolic space forms. ....         | 679 |
| MABUCHI, T.: Einstein-Kähler forms, Futaki invariants and convex geometry on toric Fano varieties. ....                        | 705 |
| KOBAYASHI, T.: Pseudo-Anosov homeomorphisms which extend to orientation reversing homeomorphisms of $S^3$ . ....               | 739 |
| MURAKAMI, J.: The Kauffman polynomial of links and representation theory. ....   | 745 |
| MARUMOTO, Y.: Some higher dimensional knots. ....  | 759 |
| HARADA, M.: Generalizations of Nakayama ring VI (right US- $n$ rings; $n=3, 4$ ). ....   | 785 |
| KOIHARA, A.: Function-theoretic properties of solutions of semi-linear $\bar{\partial}$ -equations —similarity principle—..... | 817 |
| ICHINOSE, W.: The Cauchy problem for Schrödinger type equations with variable coefficients. ....                               | 853 |
| MORITA, T.: A fluctuation theorem associated with Cauchy problems for stationary random operators. ....                        | 887 |
| PARK, D.G.: Regularity in time of the solution of parabolic initial-boundary value problem in $L^1$ space. ....                | 911 |