

Research Article

Modeling and Analysis of Material Flows in Re-Entrant Supply Chain Networks Using Modified Partial Differential Equations

Fenglan He,¹ Ming Dong,² and Xiaofeng Shao²

¹ Department of Industrial Engineering, School of Mechanical Engineering, Shanghai Jiao Tong University, 800 Dongchuan Road, Shanghai 200240, China

² Department of Operations Management, Antai College of Economics & Management, Shanghai Jiao Tong University, 535 Fahu Zhen Road, Shanghai 200052, China

Correspondence should be addressed to Ming Dong, mdong@sjtu.edu.cn

Received 12 December 2010; Accepted 8 January 2011

Academic Editor: Shuyu Sun

Copyright © 2011 Fenglan He et al. This is an open access article distributed under the Creative Commons Attribution License, which permits unrestricted use, distribution, and reproduction in any medium, provided the original work is properly cited.

The basic partial differential equation (PDE) models for supply chain networks with re-entrant nodes and their macroscopic are proposed. However, through numerical examples, the basic continuum models do not perform well for multiple re-entrant systems. Then, a new state equation considering the re-entrant degree of the products is introduced to improve the effectiveness of the basic continuum models. The applicability of the modified continuum models for re-entrant supply chains is illustrated through numerical examples. Finally, based on the modified continuum model, numerical examples of different re-entrant degrees are given, meanwhile, the changes in the WIP and outflux are analyzed in details for multiple re-entrant supply chain systems.

1. Introduction

In recent years, factories and production systems have become larger and more complicated. The re-entrant manufacturing system is a typical example, which indicates that work in process (WIP) repeatedly passes through the same workstation at different stages of the process routes. Figure 1 gives a simplified model of re-entrant systems. The model consists of three workstations and five buffers; the arrows in the figure indicate the processing path of a lot. From Figure 1, it can be seen that the lot passes through the same workstations M_1 and M_2 twice, which is a typical situation of a re-entrant system. A re-entrant supply chain network consists of many such manufacturing systems. Understanding the behavior of large supply chains under different policies and scenarios is a major issue for many businesses

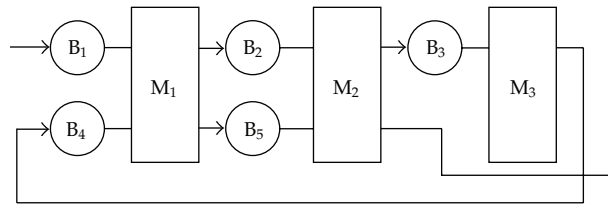


Figure 1: A simplified model for a re-entrant system.

today. In large factories, no experiments can be done involving whole supply chains. Therefore, simulation models are developed, which substitute for the real environment. There are several methods to model the multiple re-entrant production flows: Petrinet, queuing network, fluid network, and partial differential equation (PDE).

Petrinet is a mathematical tool to describe and analyze the logical relations of state changes for discrete event dynamic systems. It has been widely used in modeling, simulating, analyzing, and controlling of the discrete event dynamic systems. Compared with some other description tools, Petrinet model is especially easy to describe concurrent phenomena and simulate the parallel systems. On account of directly describing production processes, Petrinet model has been used to model the re-entrant manufacturing systems. However, it is extremely hard to solve the analytic solutions with the increase of system complexity. Wang and Wu [1] put forward an object-oriented hybrid Petrinet model of semiconductor manufacturing lines. Lin et al. [2] established a model of the re-entrant semiconductor production lines using Petrinets and studied on the stability of the system using buffer-boundless approach. Dong and Chen [3] developed a modular modeling approach based on object-oriented predicate/transition nets (OPTNs) for the analysis of supply chain process models.

Queuing network model treats each workstation as an individual discrete queue, then these independent queues are connected to form queuing networks according to the production flow. Queuing network model can directly describe the process of production lines and supply chain networks. A methodology for supply chain inventory analysis and optimization was presented by linking production authorization (PA) strategy to queueing models [4]. The statistics of arrival flow of the fluid model in queuing systems has been studied [5, 6]. Dong and Chen [7] proposed a network of inventory-queue models for the performance modeling and analysis of an integrated supply chain network. S. Kumar and P. R. Kumar [8] focused on the analysis of queuing theory of the re-entrant manufacturing systems. However, the analytic solution could be obtained only for the small-size systems based on the queuing models. When the scale of production systems or supply chain networks become large, the number of system states would grow exponentially and a combinatorial explosion problem would occur. Therefore, the queuing models have some difficulties in analysis of the real large-scale re-entrant supply chain networks. Most of the queuing models can only be used to evaluate the stability of some scheduling policies and difficult to be used directly for the real-world supply chains.

Since most supply chains deal with individual parts and the processes that those parts undergo, the above two discrete event models can describe a lot of details of the studied system. While discrete event simulators have been highly successful to simulate single factories, they are computationally too expensive to simulate even a moderately complicated

supply chains. Meanwhile, they are not scalable to a full supply chain. Therefore, a new modeling method called approximate modeling appears.

There are two kinds of approximate models: one is the so-called fluid model. It comes from traffic theory and was introduced by Newell [9] to approximately solve queuing problems. It treats the queue length $l(t)$ as a continuous variable. The change rate of a queue length is equal to the arrival rate $\lambda(t)$ minus the processing rate $\mu(t)$ when the queue length is not 0, otherwise the change rate of a queue length is 0. Hence, fluid models can quickly obtain the results by solving the ordinary differential equations. The time required for computing is not affected with the increase of material flows. The fluid models can be used not only to optimize the control system but also to reflect the long-term performance behavior of the system in the dynamic states.

However, one of the most important shortcomings of fluid models is that they cannot reflect the stochasticity of the production processes very well, that is, in the above equation, if $\lambda(t)$ and $\mu(t)$ are mean rates, then this is a fully deterministic system, stochasticity is not modeled at all. Otherwise, if $\lambda(t)$ and $\mu(t)$ are stochastic processes, then some theoretical analysis will be allowed. But this will degrade the advantages of a continuum models as a simulation tool [10].

Dai and Weiss [11] analyzed the relationship between the stability of the fluid model and the stability of the scheduling policies for the related queuing networks. Here, the stability of the fluid models is expressed by the boundedness of the fluid variables for a fixed influx. Göttlich [12] deduced the conservation laws under the form of ordinary differential and proved the existence of its solution based on the fluid models of supply chain networks.

The other approximate model is called partial differential equation (PDE) model. PDE models are actually continuum limit of fluid models. PDE models do have several advantages, that is, they are scalable; more detailed results can be found as compared to fluid models, and more importantly, they are amenable to optimization and control [13].

Recently, the continuous models have been applied to many fields and have achieved some significant research results. Anderson [14] established the basic continuous model for supply chains and described production flow of the system using rate equations macroscopically. Lee et al. [15] studied the supply chain simulation with combined discrete-continuous modeling method. It integrates the wide applicability of the discrete event simulation (DES) and fast computation of the continuum models together. Armbruster et al. [16] introduced the concept of materials' density and established the continuous model of large-scale re-entrant manufacturing systems and proposed new state equations so that the continuous model could be used to the real production systems. Compared with a DES model, van den Berg et al. [17] verified the validity of the continuous model of simple serial production systems and then solved the optimal control problems with consideration of the demand growth. Unver et al. [18] presented a continuum (traffic flow like) model for the flow of products through complex production networks, based on statistical information obtained from extensive observations of the system. The resulting model consists of a system of hyperbolic conservation laws, which exhibit the correct diffusive properties given by the variance of the observed data.

In this paper, in order to accurately describe the multiple re-entrant supply chain networks from macroscopic perspective, a modified model is proposed, which can reflect how the re-entrant degree of a product impacts the system performance. Based on the queuing theory, we restrict our attention on establishing a new state equation considering the re-entrant degrees of jobs or products, meanwhile, we will also verify the validity of the modified PDE model for multiple re-entrant semiconductor supply chain systems by

a numerical experiment. And finally, the changes of the WIP and outflux in the case of different re-entrant factors are analyzed based on the modified PDE model.

The structure of this paper is organized as follows: in Section 2, the basic continuum model is presented and a numerical experiment is carried out to verify the validity of the basic model. Section 3 introduces the concept of re-entrant factor to improve the basic continuum model and verifies its effectiveness through an example. In Section 4, based on the modified continuous model, the WIP profile and outflux are analyzed in the case of different re-entrant factors. Finally, some conclusions are given in Section 5.

2. The Basic Continuum Model

2.1. Basic Model

Recently, continuum models for large-scale multiple re-entrant production systems have become an important research topic. Such a description is appropriate for a semiconductor manufacturing fab involving a large number of items in many stages. As $\rho(x, t)$ is the conserved variable, it is the density of the products with units [units/space] in the system. Here, x denotes the completion variable, $x = 0$ describes raw products that have just entered into the factory, and $x = 1$ denotes finished products that are ready to exit from the system. So, in the closed interval $x \in [0, 1]$. The total number of products in the system can be found by taking the integral of density $\rho(x, t)$ of products over the stage variable x from 0 to 1. Therefore, the total WIP $W(t)$ as a function of time can be obtained as follows:

$$W(t) = \int_0^1 \rho(x, t) dx. \quad (2.1)$$

According to the conservation law, assuming that there is a unique entry and exit for the system and the yield is 100%, PDE models can be given by

$$\frac{\partial \rho(x, t)}{\partial t} + \frac{\partial (v(\rho(x, t))\rho(x, t))}{\partial x} = 0, \quad x \in [0, 1], \quad t \in (0, \infty), \quad (2.2)$$

where $v(\rho(x, t))$ is a velocity function that depends on the density $\rho(x, t)$ only. For a re-entrant supply chain system, we assume that $v(\rho(x, t))$ can be described by a state equation of the following form:

$$v(\rho(x, t)) = v_0 \left(1 - \frac{W(t)}{W_{\max}} \right). \quad (2.3)$$

Here, v_0 is the velocity for the empty supply chain system and W_{\max} is the maximal load (capacity of the supply chain system). Clearly, the velocity $v(\rho(x, t))$ is determined by the total WIP. The boundary condition for the start rate $\lambda(t)$ of products entering the supply chain system at $x = 0$ is then defined as

$$\lambda(t) = \rho(0, t)v(t). \quad (2.4)$$

An arbitrary initial condition for the density of the products can be expressed as

$$\rho(x, 0) = \rho_0(x). \quad (2.5)$$

The production process in the supply chain network is described as an equivalent $M/M/1$ queue. The state variable ρ_{eq} denotes the equilibrium density of the supply chain system as a whole. Let $\rho = \rho_{\text{eq}}$, then $\rho(0, t) = \rho_{\text{eq}}$ and $v = v_{\text{eq}} = 1/\tau$. Correspondingly, the associated cycle time in steady state is $\tau = 1/v_{\text{eq}}$. Since a job arriving at a queue with a processing rate is $\mu = 1/v_{\text{max}}$, the cycle time $\tau = \mu(1 + L)$ can be obtained according to the queuing theory; therefore, the equilibrium velocity becomes

$$v(\rho) = \frac{v_{\text{max}}}{1 + \int_0^1 \rho(x, t) dx} = \frac{v_{\text{max}}}{1 + w(t)}. \quad (2.6)$$

Equation (2.6) is a widely used expression between v and ρ for large-scale multiple re-entrant supply chain systems; note that the velocity v only depends upon the WIP at stage x . Therefore, Equation (2.2) can be rewritten as

$$\frac{\partial \rho(x, t)}{\partial t} + v \frac{\partial \rho(x, t)}{\partial x} = 0, \quad x \in [0, 1], \quad t \in (0, \infty). \quad (2.7)$$

Hence, assuming an initial WIP distribution $\rho_0(x)$ in the factory is given, the resulting full PDE model for the single-product multiple re-entrant supply chain systems is given as follows

$$\begin{aligned} \frac{\partial \rho(x, t)}{\partial t} + v(\rho) \frac{\partial \rho(x, t)}{\partial x} &= 0 \\ \rho(x, 0) &= \rho_0(x), \\ \rho(0, t)v(t) &= \lambda(t), \\ v(\rho) &= \frac{v_{\text{max}}}{1 + \int_0^1 \rho(x, t) dx}. \end{aligned} \quad (2.8)$$

If the influx $\lambda(t)$ and the initial condition $\rho_0(x)$ are nonnegative, then the density will remain nonnegative. We use an upwind scheme [19] to discretize the PDE which is given by the following equation:

$$\rho(x_i, t_{j+1}) = \rho(x_i, t_j) - \frac{\Delta t}{\Delta x} v(t_j) [\rho(x_i, t_j) - \rho(x_{i-1}, t_j)], \quad (2.9)$$

where $i = 1, 2, \dots, N$, and $j = 0, 1, \dots, M - 1$. Δt and Δx are the step sizes in time and space, respectively. Based on the boundary condition, the propagation scheme is given by

$$\rho(x_0, t_{j+1}) = \rho(x_0, t_j) - \frac{\Delta t}{\Delta x} [v(t_j)\rho(x_0, t_j) - \lambda(t_j)]. \quad (2.10)$$

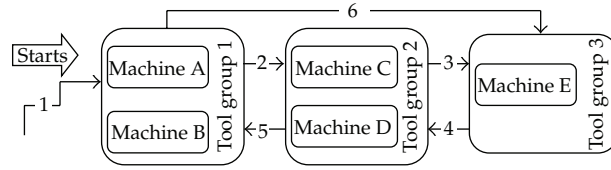


Figure 2: Process flow diagram of the Mini-Fab.

Since the Courant-Friedrich-Lewy (CFL) condition is necessary for stability, the time step Δt and the space step Δx must satisfy the formulation as follows: $|(\Delta t / \Delta x)v_{\max}(t)| \leq 1$. Here, $v_{\max}(t)$ is the maximum of all occurring velocities in the system at time t .

Based on the above formula, the density distribution of each moment $\rho(x_i, t_j)$ can be obtained. Therefore, the system throughput rate $q(x_N, t_j)$ of each moment can also be computed as follows:

$$q(x_N, t_j) = \rho(x_N, t_j)v(\rho(x_N, t_j)). \quad (2.11)$$

Furthermore, the total WIP $w(t) = \int_0^1 \rho(x, t)dx$ can be obtained via the extended Simpson's rule quadrature, then the following equation can be obtained:

$$w(t) = \int_0^1 \rho(x, t)dx = \frac{h}{48} \left[17\rho(x_0, t) + 59\rho(x_1, t) + 43\rho(x_2, t) + 49\rho(x_3, t) + 48 \sum_{i=4}^{N-4} \rho(x_i, t) \right. \\ \left. + 49\rho(x_{N-3}, t) + 43\rho(x_{N-2}, t) + 59\rho(x_{N-1}, t) + 17\rho(x_N, t) \right]. \quad (2.12)$$

Finally, the density distribution $\rho(x_i, t_j)$ and throughput $q(x_N, t_j)$ of each moment can be obtained.

2.2. Numerical Experiments

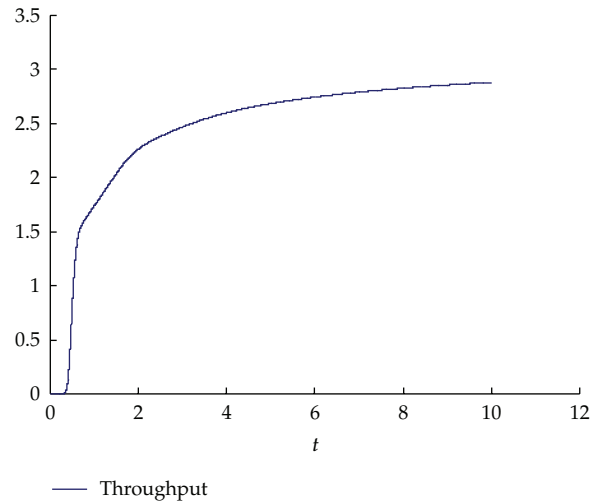
Mini-Fab is a simplified model of the semiconductor production line, which has all the important features of the re-entrant semiconductor manufacturing systems, such as re-entrant, different processing time, and batch production. Currently, many scholars have done a lot of research work based on the Mini-Fab. The Mini-Fab contains 5 machines grouped into 3 tool sets; the product comprises of 6 processing steps, each tool set is visited twice, which is shown in Figure 2 [20].

For convenience, we make the following basic assumptions on the model:

- (1) the product yield rate is 100%, namely, there is no rework problem;
- (2) the system is a continuous production process for 24 hours a day;
- (3) the system does not take into account the time of carrying, loading and discharging, adjusting equipment, and premaintaining equipment and downtime.

Table 1: Processing time of the product D at each step.

| Machining centers | Processing time (hours) | |
|-------------------|-------------------------|-------------|
| Machines A & B | Step 1: 1.5 | Step 5: 1.5 |
| Machines C & D | Step 2: 0.5 | Step 4: 1 |
| Machine E | Step 3: 1 | Step 6: 0.5 |

**Figure 3:** Throughput as a function of time for the PDE simulation.

Now it is assumed that there is one product D in the Mini-Fab, processing steps and processing time shown in Table 1.

Based on the basic continuous model, the parameters are assumed as follows: $P = 0.25$ (days), $v_{\max} = 4$ (units/day), $\lambda = 5$ (units/day). We typically start up with an empty production system; the total running time of the production lines is 10 (days). Let $\Delta t = 0.001$ and $\Delta x = 0.01$, then Δx and Δt satisfy the CFL stability condition $(\Delta t/\Delta x)v_{\max} < 1$. The system throughput can be obtained through the simulation based on the basic PDE model of (2.8). Figure 3 indicates that the system throughput is about 3.2 (units/day) during the steady state.

Once the throughput of the basic continuous models is obtained, the corresponding Mini-Fab simulation model can be built using simulation package ExtendSim [21] to verify the validity of the models with a period of one year. As can be seen from Figure 4 that the throughput during the steady state is about 5 (units/day) through the ExtendSim simulation.

Comparing Figure 3 with Figure 4, it is obviously found that there are some differences between the throughput results of the two models. This is because the basic continuous model of (2.8) is built on the basis of a large number of materials, and many re-entrant steps in the systems and some important characteristics of semiconductor production systems are not captured. Therefore, the further investigation is needed to explore more precise models for multiple re-entrant production systems.

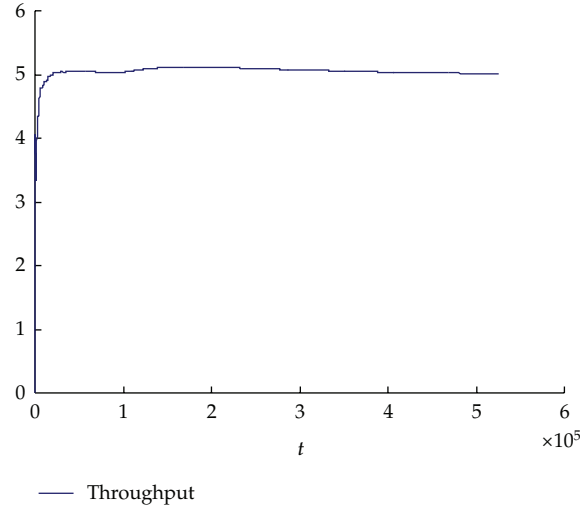


Figure 4: Throughput as a function of time for the ExtendSim simulation.

3. The Modified Continuum Model

3.1. Modified Model

It is worth noting that the state equations can reflect the characteristics of systems—any change of the multiple re-entrant production systems may lead to a different state equation. Equation (2.6) is a quite general state equation, in order to capture some important features of multiple re-entrant supply chain systems, so a more specified relationship is required for computing velocities numerically. Lefeber and Armbruster [22] presented a more sophisticated re-entrant factory model through the use of integration kernels. For the general supply chain systems (non-re-entrant systems), Sun and Dong [23] described several kinds of state equations and the corresponding cycle times. Although there are many kinds of continuum models for describing the re-entrant production system currently, they do not reflect how the re-entrant degree of the product impacts the system performance. Hence, a new concept reflecting the re-entrant degree of the products is introduced.

Definition 3.1. Let α be a product re-entrant factor, α equals the ratio of the product processing time of re-entrant steps and the product total processing time.

Re-entrant factor α is the property of product process flows, with the increase of re-entrant factor α , the degree of re-entrant of the product becomes larger and larger. Let P be the total processing time, let P_1 be the re-entrant processing time, and let P_2 be the non-re-entrant processing time. According to the above definition, we can obtain the following formula:

$$\alpha = \frac{P_1}{P_1 + P_2} = \frac{P_1}{P}. \quad (3.1)$$

In reality, the velocity of products in the system is not only related with the WIP level but also with the re-entrant factor. Let $w(t)$ be the WIP level in the system at a given time t , let

$w(\Delta x, t)$ be the WIP level at interval Δx at time t , let Δx be the interval of the completion of the product, and let Δt be the processing time required to complete the interval Δx . Assume that $w(\Delta x, t)$ is proportional to Δt and the system consists of two parts: re-entrant processes and non-re-entrant processes, hence, $\alpha w(t)$ is the WIP level of the re-entrant processes at a given time t and also referred to as re-entrant WIP. Similarly, $(1 - \alpha)w(t)$ is the WIP level of non-re-entrant processes at a given time t and also called as non-re-entrant WIP.

According to the queuing theory, the processing cycle time of the re-entrant process τ_1 can be expressed as follows:

$$\tau_1 = [1 + \alpha w(t)]P_1. \quad (3.2)$$

As for the non-re-entrant processes, assuming the total number of workstations is m , a_1, a_2, \dots, a_m are the corresponding processing times at each workstation, respectively, and τ_2 is the non-re-entrant processing cycle time, then we have

$$\begin{aligned} P_2 &= a_1 + a_2 + \dots + a_m, \\ \tau_2 &= \sum_{i=1}^m \left(1 + \frac{a_i}{P} w(t)\right) a_i = \sum_{i=1}^m a_i + \sum_{i=1}^m \frac{a_i^2}{P} w(t) = P_2 + \sum_{i=1}^m \frac{a_i^2}{P} w(t), \end{aligned} \quad (3.3)$$

so the total cycle time τ can be written in the following form:

$$\tau = \tau_1 + \tau_2 = [1 + \alpha w(t)]P_1 + \left[P_2 + \sum_{i=1}^m \frac{a_i^2}{P} w(t) \right] = P + \left(\alpha^2 + \sum_{i=1}^m \frac{a_i^2}{P^2} \right) w(t)P. \quad (3.4)$$

Then, the resulting new state equation for the velocity will be given by

$$v = \frac{1}{\tau} = \frac{1}{P + (\alpha^2 + \sum_{i=1}^m (a_i^2 / P^2))w(t)P}. \quad (3.5)$$

In order to avoid computational complexity of $\sum_{i=1}^m (a_i^2 / P^2)$, an approximate method is proposed to deal with the non-re-entrant process. Suppose that WIP in non-re-entrant processes follows the uniform distribution in each workstation, then the mean processing time P_2/m and the mean WIP level at each workstation $((1 - \alpha)/m)w(t)$ can be obtained. According to the queuing theory, the mean cycle time of the non-re-entrant processes at each workstation is $[1 + ((1 - \alpha)/m)w(t)](P_2/m)$, and the total cycle time of the non-re-entrant

processes τ_2 is $[1 + ((1 - \alpha)/m)\omega(t)]P_2$. Therefore, the total cycle time τ can be expressed as follows:

$$\begin{aligned}
 \tau &= \tau_1 + \tau_2 = [1 + \alpha\omega(t)]P_1 + \left[1 + \frac{(1 - \alpha)}{m}\omega(t)\right]P_2 \\
 &= P_1 + P_2 + \left[\alpha P_1 + \frac{(1 - \alpha)}{m}P_2\right]\omega(t) \\
 &= P + \left[\alpha \cdot \alpha P + (1 - \alpha) \cdot \frac{(1 - \alpha)P}{m}\right]\omega(t) \\
 &= P + \left[\alpha^2 + \frac{(1 - \alpha)^2}{m}\right]\omega(t)P.
 \end{aligned} \tag{3.6}$$

The corresponding new state equation can be obtained as follows:

$$v = \frac{1}{\tau} = \frac{1}{P + \left[\alpha^2 + (1 - \alpha)^2/m\right]\omega(t)P}. \tag{3.7}$$

Therefore, the resulting modified whole PDE model is given below:

$$\begin{aligned}
 \frac{\partial \rho(x, t)}{\partial t} + v(\rho) \frac{\partial \rho(x, t)}{\partial x} &= 0, \\
 \rho(x, 0) &= \rho_0(x), \\
 \rho(0, t)v(t) &= \lambda(t), \\
 v = \frac{1}{\tau} &= \frac{v_{\max}}{1 + \left[\alpha^2 + (1 - \alpha)^2/m\right]\omega(t)}.
 \end{aligned} \tag{3.8}$$

3.2. Validity of the Modified Model

Once the new state equation is obtained, the same example in the previous section can be used to verify the validity of the modified models. According to Figure 2, the total number of workstations is $m = 3$, the steps 4 to 6 are re-entrant steps. From Table 1, the products' re-entrant factor $\alpha = 0.5$ can be easily obtained by definition. Assume that the influx λ is 5 (units/day) and the total running time is 10 (days), the system starts running from an empty state. With $\Delta t = 0.001$, $\Delta x = 0.01$, then Δx and Δt satisfy the CFL stability condition: $v_{\max} \cdot \Delta t / \Delta x < 1$. Similarly, the modified continuous model (3.8) can be solved via the upwind scheme, and the throughput of the modified models can be obtained, which is plotted in Figure 5.

It can be seen that the throughput is initially zero for the re-entrant system. This is due to the time delay and the system initialization (the system starts up with an empty factory), then the system begins to have throughput about 0.25 (days) and increases drastically until

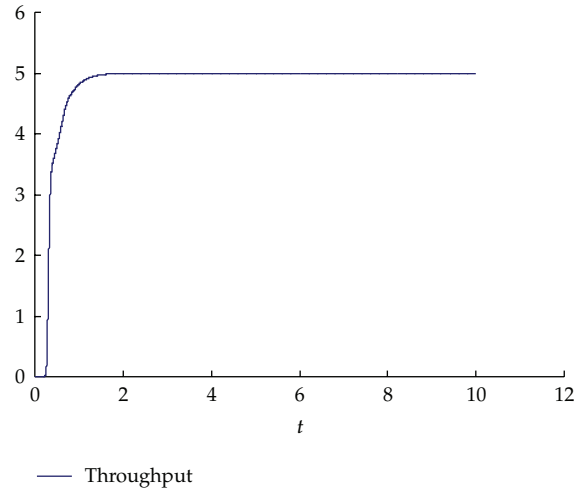


Figure 5: Throughput as a function of time for the modified PDE model.

the throughput reaches a stable value of 5 (units/day) about 1.5 days. It is obvious that the results are basically consistent with the simulation results obtained from ExtendSim. Therefore, it can be seen that the modified models are more effective for multiple re-entrant supply chain systems.

4. Case Studies for the Different Re-Entrant Factors

In order to analyze the influence of the re-entrant degree on the WIP profile and outflux for the multiple re-entrant supply chain systems, several scenarios of the different re-entrant factors are presented in this section. Same as the previous section, let $v_{\max} = 4$ (units/day), a uniform time step size $\Delta t = 0.001$ (days), and a uniform spatial interval length $\Delta x = 0.01$, then Δx and Δt also satisfy the CFL stability condition $(\Delta t / \Delta x)v_{\max} < 1$. We assume that the varying influx is prescribed first, as shown in Figure 6.

Taking the multiple re-entrant production systems as an example, the system begins to run from an empty factory. We observe the changes of the WIP and outflux in the case of different re-entrant factors. As shown in Figure 7, black and red lines indicate the WIP and outflux, respectively.

From Figure 7, we can observe that, roughly, the WIP of the modified PDE model shows an increasing trend gradually first to reach the maximum and then it has a decreasing trend until it reaches the stable value. Meanwhile, the outflux of the modified PDE model rises slowly and then sharply reaches the maximum, after that the outflux shows a sudden decrease and then slowly reaches a stable value. Additionally, it is easy to see that the maximum WIP occurs a small decrease first and then rises slowly with the increase of the re-entrant factor. Correspondingly, the maximum outflux appears a small increasing trend at first; when the WIP reaches a certain value, the maximum outflux becomes smaller and smaller with the increase of the re-entrant factor. These results are almost consistent with the actual situation; meanwhile, the materials flow can be better controlled according to the WIP profile and outflux.

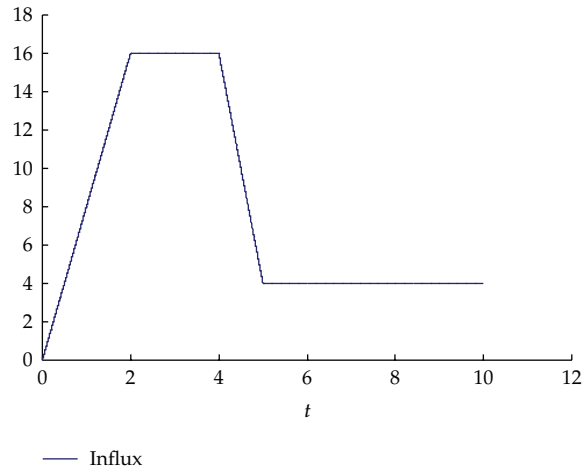


Figure 6: Influx as a function of time for the modified PDE model.

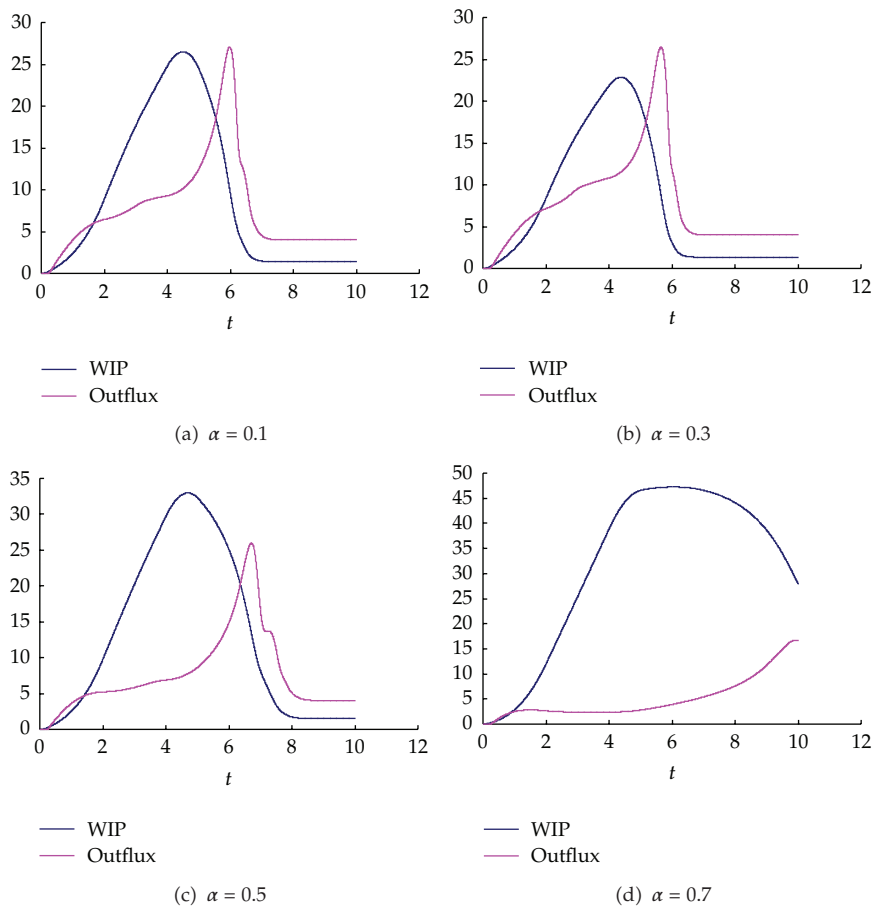


Figure 7: WIP and Throughput as a function of time for the modified PDE model.

5. Conclusions

In this paper, the basic continuum models for material flows are first proposed, and its low accuracy for the multiple re-entrant supply chain networks is explained by a numerical experiment. In order to model such systems more precisely, this paper presents a new state equation that takes into account the re-entrant degree of the product. The applicability of the modified continuum model for multiple re-entrant supply chain systems is also illustrated through a numerical example. Afterwards, based on the modified continuum models, some numerical examples on different re-entrant factors are provided, and the impacts of different re-entrant factors on the WIP profile and outflux changes are studied. Meanwhile, some interesting observations are discussed. The proposed model can be used to obtain more accurate results for material flows of the multiple re-entrant supply chain networks from macroscopic perspective.

Acknowledgments

The work presented in this paper has been supported by a Grant from the National High-Tech Research and Development Program (863 Program) of China (no. 2008AA04Z104) and a Grant from National Natural Science Foundation of China (no. 70871077).

References

- [1] Z. Wang and Q. Wu, "Object-oriented hybrid PN model of semiconductor manufacturing line," in *Proceedings of the 4th World Congress on Intelligent Control and Automation*, pp. 1354–1358, June 2002.
- [2] C. Lin, M. Xu, D. C. Marinescu, F. Ren, and Z. Shan, "A sufficient condition for instability of buffer priority policies in re-entrant lines," *IEEE Transactions on Automatic Control*, vol. 48, no. 7, pp. 1235–1238, 2003.
- [3] M. Dong and F. F. Chen, "Process modeling and analysis of manufacturing supply chain networks using object-oriented Petri nets," *Robotics and Computer-Integrated Manufacturing*, vol. 17, no. 1-2, pp. 121–129, 2001.
- [4] M. Dong, "Inventory planning of supply chains by linking production authorization strategy to queueing models," *Production Planning and Control*, vol. 14, no. 6, pp. 533–541, 2003.
- [5] M. Li, "Fractal time series—a tutorial review," *Mathematical Problems in Engineering*, vol. 2010, Article ID 157264, 26 pages, 2010.
- [6] M. Li, W. Zhao, and S. Y. Chen, "mBm-based scalings of traffic propagated in internet," *Mathematical Problems in Engineering*, vol. 2011, Article ID 389803, 21 pages, 2011.
- [7] M. Dong and F. F. Chen, "Performance modeling and analysis of integrated logistic chains: an analytic framework," *European Journal of Operational Research*, vol. 162, no. 1, pp. 83–98, 2005.
- [8] S. Kumar and P. R. Kumar, "Queueing network models in the design and analysis of semiconductor wafer fabs," *IEEE Transactions on Robotics and Automation*, vol. 17, no. 5, pp. 548–561, 2001.
- [9] G. F. Newell, "Scheduling, location, transportation, and continuum mechanics: some simple approximations to optimization problems," *SIAM Journal on Applied Mathematics*, vol. 25, no. 3, pp. 346–360, 1973.
- [10] D. Armbruster, D. E. Marthaler, C. Ringhofer, K. Kempf, and T. C. Jo, "A continuum model for a re-entrant factory," *Operations Research*, vol. 54, no. 5, pp. 933–950, 2006.
- [11] J. G. Dai and G. Weiss, "Stability and instability of fluid models for reentrant lines," *Mathematics of Operations Research*, vol. 21, no. 1, pp. 115–134, 1996.
- [12] S. Göttlich, M. Herty, and A. Klar, "Network models for supply chains," *Communications in Mathematical Sciences*, vol. 3, no. 4, pp. 545–559, 2005.
- [13] J. Nocedal and S. J. Wright, *Numerical Optimization*, Springer Series in Operations Research and financial Engineering, Springer, New York, NY, USA, 2006.

- [14] E. J. Anderson, "A new continuous model for job shop scheduling," *International Journal of Systems Science*, vol. 12, no. 12, pp. 1469–1475, 1981.
- [15] Y. H. Lee, M. K. Cho, S. J. Kim, and Y. B. Kim, "Supply chain simulation with discrete-continuous combined modeling," *Computers and Industrial Engineering*, vol. 43, no. 1-2, pp. 375–392, 2002.
- [16] D. Armbruster, C. Ringhofer, and T. C. Jo, "Continuous models for production flows," in *Proceedings of the American Control Conference (AAC '04)*, pp. 4589–4594, July 2004.
- [17] R. van den Berg, E. Lefeber, and K. Rooda, "Modeling and control of a manufacturing flow line using partial differential equations," *IEEE Transactions on Control Systems Technology*, vol. 16, no. 1, pp. 130–136, 2008.
- [18] A. Unver, C. Ringhofer, and D. Armbruster, "A hyperbolic relaxation model for product flow in complex production networks," *Discrete and Continuous Dynamical Systems*, supplement 2009, pp. 790–799, 2009.
- [19] R. J. LeVeque, *Finite Difference Methods for Ordinary and Partial Differential Equations*, Society for Industrial and Applied Mathematics, Philadelphia, Pa, USA, 2007.
- [20] H. Vogt, "FabSim Mini-fab example," 2007, <http://www.fabsim.com/index.html>.
- [21] T. B. Qin and Y. F. Wang, *Application Oriented Simulation Modeling and Analysis with ExtendSim*, Tsinghua University Press, Beijing, China, 2009.
- [22] E. Lefeber and D. Armbruster, *Aggregate modeling of manufacturing systems*, Systems Engineering Group, 2007.
- [23] S. Sun and M. Dong, "Continuum modeling of supply chain networks using discontinuous Galerkin methods," *Computer Methods in Applied Mechanics and Engineering*, vol. 197, no. 13–16, pp. 1204–1218, 2008.