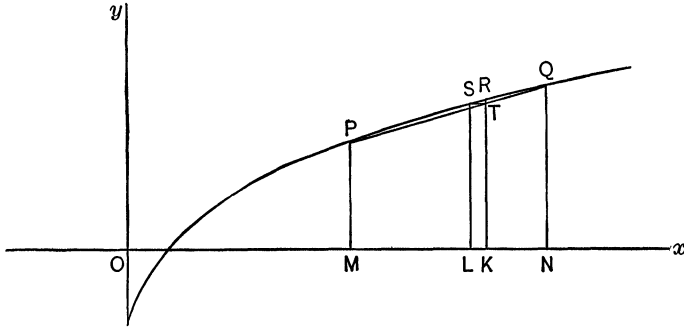


The chord PQ being drawn meets KR at T , so that

$$KT = pf(v + s) + qf(v).$$



Through T draw TS parallel to the axis of x to meet the curve in S , and through S draw the ordinate SL meeting the axis of x in the point L ; then since $SL = TK$, we have

OL = fortune in possession whose moral value equals the moral value of the expectation.

LN = premium which may, without disadvantage, be paid to insure S , represented by MN .

KN = net premium for same.

$LK = ST$ = loading allowed.

OTTAWA, July 12, 1895.

NOTES.

A REGULAR meeting of the AMERICAN MATHEMATICAL SOCIETY was held in New York, Saturday afternoon, October 26, at three o'clock, the President, Dr. HILL, in the chair. There were nineteen members present. On the recommendation of the Council, the following persons, nominated at the preceding meeting, were elected to membership: Professor HENRY BYRON NEWSON, University of Kansas, Lawrence, Kas.; and Professor FREDERICK SHENSTONE WOODS, Massachusetts Institute of Technology, Boston, Mass. Seven nominations for membership were received. The President announced to the Society that an invitation had been received from the President of the Northwestern University, Evanston, Ill., inviting the Society to hold its next summer meeting at